

Home data report

113 Williams Street, Waxahachie, Ellis County, Texas, United States, 75165



Total Area: 1996 sq. ft

1st Floor: 1996 sq. ft

Excluded: Utility 29 sq. ft, Screened porch 65 sq. ft, Patio 17 sq. ft, Front porch 230 sq. ft, Walls: 112 sq. ft

Property summary

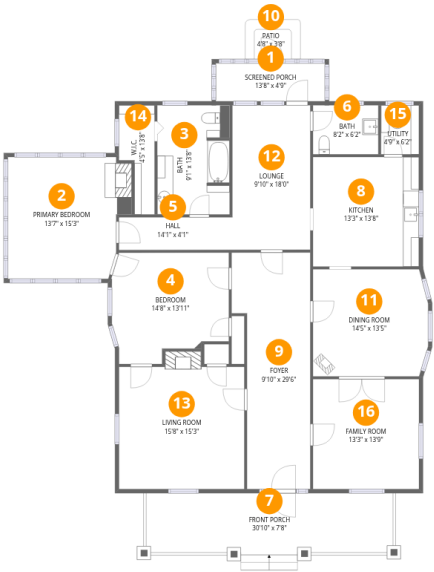
 **1** Floors

 **2** Bedrooms

 **1** Bathrooms

 **1** Half baths

113 Williams Street, Waxahachie, Ellis County, Texas, United States, 75165



Room dimensions

Floor 1 Total:1996sqft Excluded: 341sqft

#		Dimensions	sqft	Counted as living area
1	Screened Porch	13'8" x 4'9"	65 sq. ft	No
2	Primary Bedroom	13'7" x 15'3"	217 sq. ft	Yes
3	Bath	9'1" x 13'8"	122 sq. ft	Yes
4	Bedroom	14'8" x 13'11"	180 sq. ft	Yes
5	Hall	14'1" x 4'1"	58 sq. ft	Yes
6	Bath	8'2" x 6'2"	50 sq. ft	Yes
7	Front Porch	30'10" x 7'8"	230 sq. ft	No
8	Kitchen	13'3" x 13'8"	181 sq. ft	Yes
9	Foyer	9'10" x 29'6"	248 sq. ft	Yes
10	Patio	4'8" x 3'8"	17 sq. ft	No
11	Dining Room	14'5" x 13'5"	188 sq. ft	Yes

Home data report

113 Williams Street, Waxahachie, Ellis County, Texas, United States, 75165

#		Dimensions	sqft	Counted as living area
12	Lounge	9'10" x 18'0"	176 sq. ft	Yes
13	Living Room	15'8" x 15'3"	248 sq. ft	Yes
14	W.I.C.	4'5" x 13'8"	48 sq. ft	Yes
15	Utility	4'9" x 6'2"	29 sq. ft	No
16	Family Room	13'3" x 13'9"	182 sq. ft	Yes

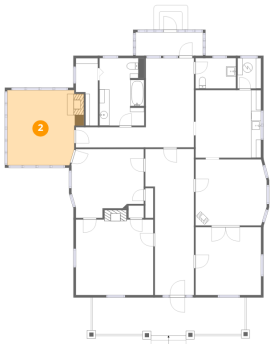
1 Floor 1 - Screened Porch



Dimensions: 13'8" x 4'9"
Area: 65 sq. ft
Counted as living area: No

Heated: No
Finished: No
Enclosed: No
Contiguous: Yes
Permitted: Yes
Wet space: No
Addition: No
Conversion: No

2 Floor 1 - Primary Bedroom



Dimensions: 13'7" x 15'3"
Area: 217 sq. ft
Counted as living area: Yes

Heated: Yes
Finished: Yes
Enclosed: Yes
Contiguous: Yes
Permitted: Yes
Wet space: No
Addition: No
Conversion: No

113 Williams Street, Waxahachie, Ellis County, Texas, United States, 75165

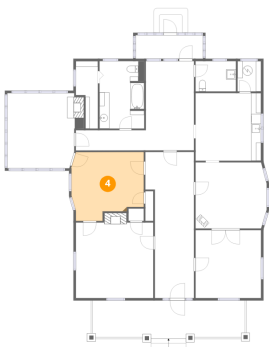
3 Floor 1 - Bath



Dimensions: 9'1" x 13'8"
Area: 122 sq. ft
Counted as living area: Yes

Heated: Yes
Finished: Yes
Enclosed: Yes
Contiguous: Yes
Permitted: Yes
Wet space: Yes
Addition: No
Conversion: No

4 Floor 1 - Bedroom



Dimensions: 14'8" x 13'11"
Area: 180 sq. ft
Counted as living area: Yes

Heated: Yes
Finished: Yes
Enclosed: Yes
Contiguous: Yes
Permitted: Yes
Wet space: No
Addition: No
Conversion: No

5 Floor 1 - Hall



Dimensions: 14'1" x 4'1"
Area: 58 sq. ft
Counted as living area: Yes

Heated: Yes
Finished: Yes
Enclosed: Yes
Contiguous: Yes
Permitted: Yes
Wet space: No
Addition: No
Conversion: No

113 Williams Street, Waxahachie, Ellis County, Texas, United States, 75165

6 Floor 1 - Bath



Dimensions: 8'2" x 6'2"
Area: 50 sq. ft
Counted as living area: Yes

Heated: Yes
Finished: Yes
Enclosed: Yes
Contiguous: Yes
Permitted: Yes
Wet space: Yes
Addition: No
Conversion: No

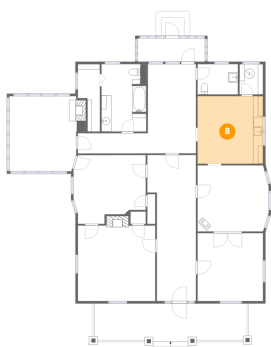
7 Floor 1 - Front Porch



Dimensions: 30'10" x 7'8"
Area: 230 sq. ft
Counted as living area: No

Heated: No
Finished: No
Enclosed: No
Contiguous: Yes
Permitted: Yes
Wet space: No
Addition: No
Conversion: No

8 Floor 1 - Kitchen



Dimensions: 13'3" x 13'8"
Area: 181 sq. ft
Counted as living area: Yes

Heated: Yes
Finished: Yes
Enclosed: Yes
Contiguous: Yes
Permitted: Yes
Wet space: No
Addition: No
Conversion: No

113 Williams Street, Waxahachie, Ellis County, Texas, United States, 75165

9 Floor 1 - Foyer



Dimensions: 9'10" x 29'6"
Area: 248 sq. ft
Counted as living area: Yes

Heated: Yes
Finished: Yes
Enclosed: Yes
Contiguous: Yes
Permitted: Yes
Wet space: No
Addition: No
Conversion: No

10 Floor 1 - Patio



Dimensions: 4'8" x 3'8"
Area: 17 sq. ft
Counted as living area: No

Heated: No
Finished: No
Enclosed: No
Contiguous: Yes
Permitted: Yes
Wet space: No
Addition: No
Conversion: No

11 Floor 1 - Dining Room



Dimensions: 14'5" x 13'5"
Area: 188 sq. ft
Counted as living area: Yes

Heated: Yes
Finished: Yes
Enclosed: Yes
Contiguous: Yes
Permitted: Yes
Wet space: No
Addition: No
Conversion: No

113 Williams Street, Waxahachie, Ellis County, Texas, United States, 75165

12 Floor 1 - Lounge



Dimensions: 9'10" x 18'0"
Area: 176 sq. ft
Counted as living area: Yes

Heated: Yes
Finished: Yes
Enclosed: Yes
Contiguous: Yes
Permitted: Yes
Wet space: No
Addition: No
Conversion: No

13 Floor 1 - Living Room



Dimensions: 15'8" x 15'3"
Area: 248 sq. ft
Counted as living area: Yes

Heated: Yes
Finished: Yes
Enclosed: Yes
Contiguous: Yes
Permitted: Yes
Wet space: No
Addition: No
Conversion: No

14 Floor 1 - W.I.C.



Dimensions: 4'5" x 13'8"
Area: 48 sq. ft
Counted as living area: Yes

Heated: Yes
Finished: Yes
Enclosed: Yes
Contiguous: Yes
Permitted: Yes
Wet space: No
Addition: No
Conversion: No

113 Williams Street, Waxahachie, Ellis County, Texas, United States, 75165

15 Floor 1 - Utility



Dimensions: 4'9" x 6'2"
Area: 29 sq. ft
Counted as living area: No

Heated: Yes
Finished: No
Enclosed: Yes
Contiguous: Yes
Permitted: Yes
Wet space: No
Addition: No
Conversion: No

16 Floor 1 - Family Room



Dimensions: 13'3" x 13'9"
Area: 182 sq. ft
Counted as living area: Yes

Heated: Yes
Finished: Yes
Enclosed: Yes
Contiguous: Yes
Permitted: Yes
Wet space: No
Addition: No
Conversion: No