

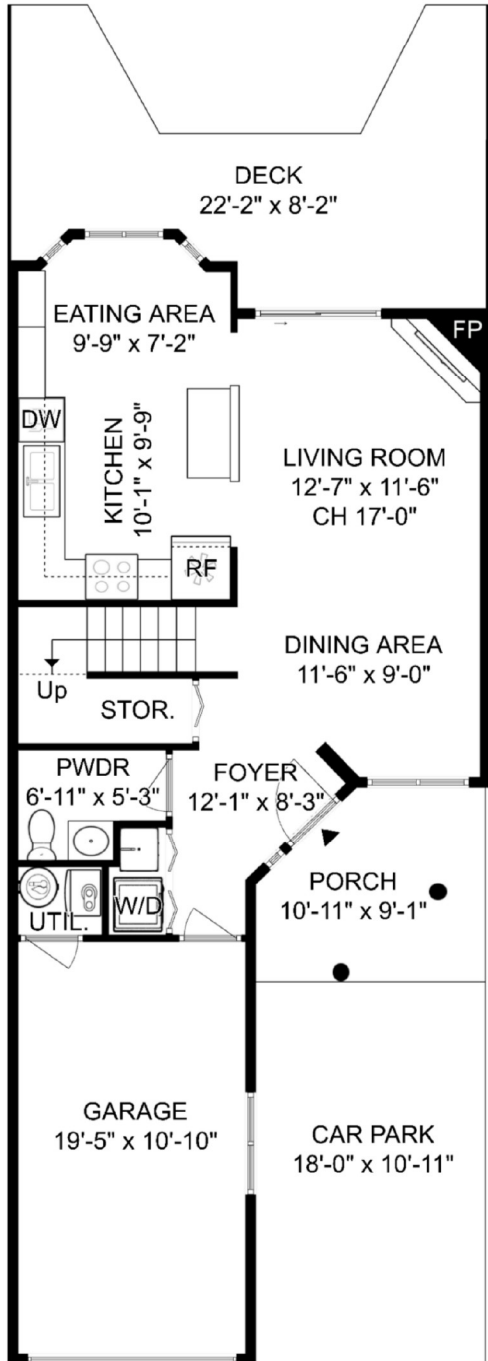
# 45 - 650 Roche Point Drive North Vancouver

INTERIOR LIVING SPACE	(sq.ft.)
Upper Floor	667
Main Floor	631
Total Area	1,298

AUXILIARY	
Deck	206
Garage	210
Porch	87
Car Park	197
Combined Total	1,998

 2 bed  
  2½ bath  
  1 den  
  2 parking

**MAIN FLOOR**  
631 sq.ft. | Ceiling Height: 8'-0" to 17'-0"



**UPPER FLOOR**  
667 sq.ft. | Ceiling Height: 8'-0"

