

2201 Lytle Street Southeast, Medical District, Huntsville,
Madison County, Alabama, United States, 35801



Total Area: 4932 sq. ft

1st Floor: 2546 sq. ft, 2nd Floor: 2386 sq. ft

Excluded: Garage 472 sq. ft, Screened porch 241 sq. ft, Low ceiling 115 sq. ft, Open to below 54 sq. ft

Property summary

 **2** Floors

 **5** Bedrooms

 **3** Bathrooms

Home data report

**2201 Lytle Street Southeast, Medical District, Huntsville,
Madison County, Alabama, United States, 35801**



1
Half baths



1
Garages

Home data report

2201 Lytle Street Southeast, Medical District, Huntsville,
Madison County, Alabama, United States, 35801



Room dimensions

Floor 1 Total:2546sqft Excluded: 713sqft

#		Dimensions	sqft	Counted as living area
1	Foyer	7'11" x 9'6"	75 sq. ft	Yes
2	Primary Bath	19'11" x 9'11"	197 sq. ft	Yes
3	Garage	20'5" x 24'9"	506 sq. ft	No
4	Primary Bedroom	19'11" x 25'0"	498 sq. ft	Yes
5	Screened Porch	14'9" x 16'3"	240 sq. ft	No
6	Hall	5'6" x 9'8"	53 sq. ft	Yes
7	Bath	5'6" x 3'11"	22 sq. ft	Yes
8	Dining Area	19'5" x 14'3"	277 sq. ft	Yes
9	Laundry	14'10" x 12'6"	186 sq. ft	Yes
10	Kitchen	21'2" x 13'11"	295 sq. ft	Yes
11	W.I.C.	8'7" x 6'8"	57 sq. ft	Yes

Home data report

2201 Lytle Street Southeast, Medical District, Huntsville,
Madison County, Alabama, United States, 35801

#		Dimensions	sqft	Counted as living area
12	Hall	4'1" x 3'8"	15 sq. ft	Yes
13	Bath	4'1" x 3'6"	14 sq. ft	Yes
14	Family Room	17'1" x 17'5"	298 sq. ft	Yes
15	Living Room	15'3" x 25'6"	390 sq. ft	Yes

2201 Lytle Street Southeast, Medical District, Huntsville,
Madison County, Alabama, United States, 35801



Room dimensions

Floor 2 Total:2386sqft Excluded: 169sqft

#		Dimensions	sqft	Counted as living area
16	W.I.C.	3'3" x 11'5"	37 sq. ft	Yes
17	Bedroom	14'9" x 15'10"	234 sq. ft	Yes
18	Bath	7'2" x 10'8"	77 sq. ft	Yes
19	Bedroom	13'6" x 16'7"	223 sq. ft	Yes
20	Bedroom	19'11" x 14'6"	289 sq. ft	Yes
21	Bath	7'8" x 10'8"	82 sq. ft	Yes
22	Bath	4'10" x 10'8"	51 sq. ft	Yes
23	W.I.C.	4'0" x 7'10"	31 sq. ft	Yes
24	Bath	5'1" x 4'10"	24 sq. ft	Yes
25	Open To Below	7'10" x 6'10"	54 sq. ft	No
26	GAME/FAMILY Room	17'5" x 16'7"	288 sq. ft	Yes

Home data report

**2201 Lytle Street Southeast, Medical District, Huntsville,
Madison County, Alabama, United States, 35801**

#		Dimensions	sqft	Counted as living area
27	Bath	5'1" x 5'6"	28 sq. ft	Yes
28	Hall	3'4" x 4'7"	15 sq. ft	Yes
29	W.I.C.	5'2" x 6'4"	33 sq. ft	Yes
30	Room	20'5" x 24'9"	506 sq. ft	Yes
31	Bedroom	13'5" x 15'3"	205 sq. ft	Yes
32	Hall	31'6" x 8'8"	273 sq. ft	Yes

2201 Lytle Street Southeast, Medical District, Huntsville,
Madison County, Alabama, United States, 35801

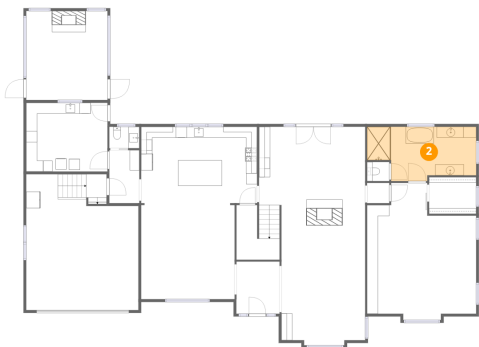
1 Floor 1 - Foyer



Dimensions: 7'11" x 9'6"
Area: 75 sq. ft
Counted as living area: Yes

Heated: Yes
Finished: Yes
Enclosed: Yes
Contiguous: Yes
Permitted: Yes
Wet space: No
Addition: No
Conversion: No

2 Floor 1 - Primary Bath

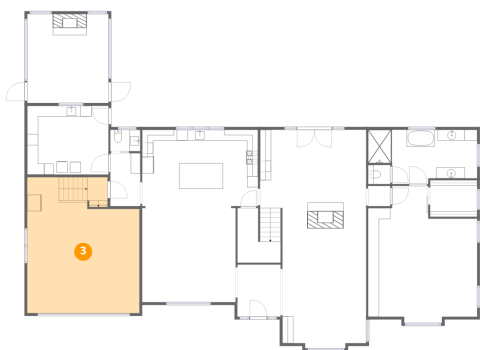


Dimensions: 19'11" x 9'11"
Area: 197 sq. ft
Counted as living area: Yes

Heated: Yes
Finished: Yes
Enclosed: Yes
Contiguous: Yes
Permitted: Yes
Wet space: Yes
Addition: No
Conversion: No

2201 Lytle Street Southeast, Medical District, Huntsville,
Madison County, Alabama, United States, 35801

3 Floor 1 - Garage



Dimensions: 20'5" x 24'9"
Area: 506 sq. ft
Counted as living area: No

Heated: No
Finished: No
Enclosed: Yes
Contiguous: Yes
Permitted: Yes
Wet space: No
Addition: No
Conversion: No

4 Floor 1 - Primary Bedroom



Dimensions: 19'11" x 25'0"
Area: 498 sq. ft
Counted as living area: Yes

Heated: Yes
Finished: Yes
Enclosed: Yes
Contiguous: Yes
Permitted: Yes
Wet space: No
Addition: No
Conversion: No

5 Floor 1 - Screened Porch



Dimensions: 14'9" x 16'3"
Area: 240 sq. ft
Counted as living area: No

Heated: No
Finished: No
Enclosed: No
Contiguous: Yes
Permitted: Yes
Wet space: No
Addition: No
Conversion: No

6 Floor 1 - Hall



Dimensions: 5'6" x 9'8"
Area: 53 sq. ft
Counted as living area: Yes

Heated: Yes
Finished: Yes
Enclosed: Yes
Contiguous: Yes
Permitted: Yes
Wet space: No
Addition: No
Conversion: No

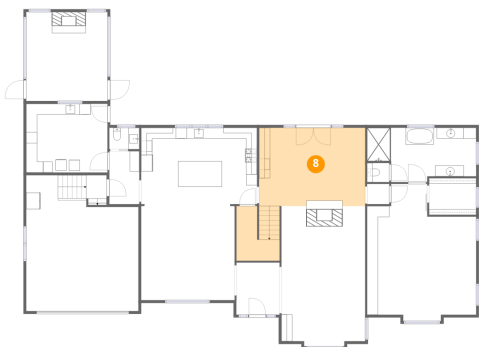
7 Floor 1 - Bath



Dimensions: 5'6" x 3'11"
Area: 22 sq. ft
Counted as living area: Yes

Heated: Yes
Finished: Yes
Enclosed: Yes
Contiguous: Yes
Permitted: Yes
Wet space: Yes
Addition: No
Conversion: No

8 Floor 1 - Dining Area



Dimensions: 19'5" x 14'3"
Area: 277 sq. ft
Counted as living area: Yes

Heated: Yes
Finished: Yes
Enclosed: Yes
Contiguous: Yes
Permitted: Yes
Wet space: No
Addition: No
Conversion: No

2201 Lytle Street Southeast, Medical District, Huntsville,
Madison County, Alabama, United States, 35801

9 Floor 1 - Laundry



Dimensions: 14'10" x 12'6"
Area: 186 sq. ft
Counted as living area: Yes

Heated: Yes
Finished: Yes
Enclosed: Yes
Contiguous: Yes
Permitted: Yes
Wet space: No
Addition: No
Conversion: No

10 Floor 1 - Kitchen



Dimensions: 21'2" x 13'11"
Area: 295 sq. ft
Counted as living area: Yes

Heated: Yes
Finished: Yes
Enclosed: Yes
Contiguous: Yes
Permitted: Yes
Wet space: No
Addition: No
Conversion: No

11 Floor 1 - W.I.C.



Dimensions: 8'7" x 6'8"
Area: 57 sq. ft
Counted as living area: Yes

Heated: Yes
Finished: Yes
Enclosed: Yes
Contiguous: Yes
Permitted: Yes
Wet space: No
Addition: No
Conversion: No

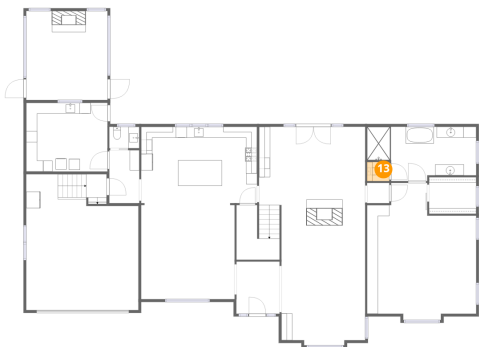
12 Floor 1 - Hall



Dimensions: 4'1" x 3'8"
Area: 15 sq. ft
Counted as living area: Yes

Heated: Yes
Finished: Yes
Enclosed: Yes
Contiguous: Yes
Permitted: Yes
Wet space: No
Addition: No
Conversion: No

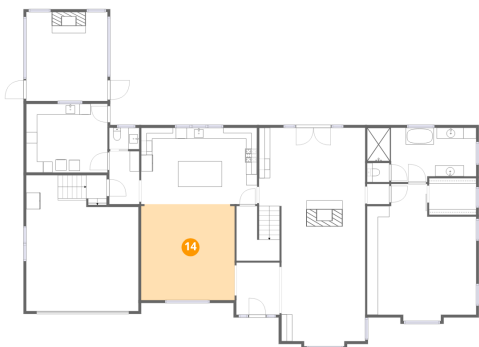
13 Floor 1 - Bath



Dimensions: 4'1" x 3'6"
Area: 14 sq. ft
Counted as living area: Yes

Heated: Yes
Finished: Yes
Enclosed: Yes
Contiguous: Yes
Permitted: Yes
Wet space: Yes
Addition: No
Conversion: No

14 Floor 1 - Family Room

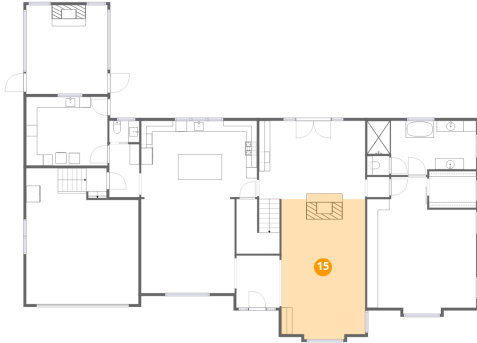


Dimensions: 17'1" x 17'5"
Area: 298 sq. ft
Counted as living area: Yes

Heated: Yes
Finished: Yes
Enclosed: Yes
Contiguous: Yes
Permitted: Yes
Wet space: No
Addition: No
Conversion: No

2201 Lytle Street Southeast, Medical District, Huntsville,
Madison County, Alabama, United States, 35801

15 Floor 1 - Living Room



Dimensions: 15'3" x 25'6"
Area: 390 sq. ft
Counted as living area: Yes

Heated: Yes
Finished: Yes
Enclosed: Yes
Contiguous: Yes
Permitted: Yes
Wet space: No
Addition: No
Conversion: No

16 Floor 2 - W.I.C.



Dimensions: 3'3" x 11'5"
Area: 37 sq. ft
Counted as living area: Yes

Heated: Yes
Finished: Yes
Enclosed: Yes
Contiguous: Yes
Permitted: Yes
Wet space: No
Addition: No
Conversion: No

17 Floor 2 - Bedroom

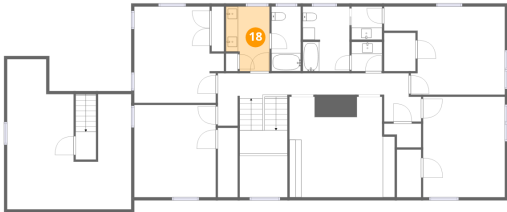


Dimensions: 14'9" x 15'10"
Area: 234 sq. ft
Counted as living area: Yes

Heated: Yes
Finished: Yes
Enclosed: Yes
Contiguous: Yes
Permitted: Yes
Wet space: No
Addition: No
Conversion: No

2201 Lytle Street Southeast, Medical District, Huntsville,
Madison County, Alabama, United States, 35801

18 Floor 2 - Bath



Dimensions: 7'2" x 10'8"
Area: 77 sq. ft
Counted as living area: Yes

Heated: Yes
Finished: Yes
Enclosed: Yes
Contiguous: Yes
Permitted: Yes
Wet space: Yes
Addition: No
Conversion: No

19 Floor 2 - Bedroom



Dimensions: 13'6" x 16'7"
Area: 223 sq. ft
Counted as living area: Yes

Heated: Yes
Finished: Yes
Enclosed: Yes
Contiguous: Yes
Permitted: Yes
Wet space: No
Addition: No
Conversion: No

20 Floor 2 - Bedroom



Dimensions: 19'11" x 14'6"
Area: 289 sq. ft
Counted as living area: Yes

Heated: Yes
Finished: Yes
Enclosed: Yes
Contiguous: Yes
Permitted: Yes
Wet space: No
Addition: No
Conversion: No

2201 Lytle Street Southeast, Medical District, Huntsville,
Madison County, Alabama, United States, 35801

21 Floor 2 - Bath



Dimensions: 7'8" x 10'8"
Area: 82 sq. ft
Counted as living area: Yes

Heated: Yes
Finished: Yes
Enclosed: Yes
Contiguous: Yes
Permitted: Yes
Wet space: Yes
Addition: No
Conversion: No

22 Floor 2 - Bath



Dimensions: 4'10" x 10'8"
Area: 51 sq. ft
Counted as living area: Yes

Heated: Yes
Finished: Yes
Enclosed: Yes
Contiguous: Yes
Permitted: Yes
Wet space: Yes
Addition: No
Conversion: No

23 Floor 2 - W.I.C.



Dimensions: 4'0" x 7'10"
Area: 31 sq. ft
Counted as living area: Yes

Heated: Yes
Finished: Yes
Enclosed: Yes
Contiguous: Yes
Permitted: Yes
Wet space: No
Addition: No
Conversion: No

24 Floor 2 - Bath



Dimensions: 5'1" x 4'10"
Area: 24 sq. ft
Counted as living area: Yes

Heated: Yes
Finished: Yes
Enclosed: Yes
Contiguous: Yes
Permitted: Yes
Wet space: Yes
Addition: No
Conversion: No

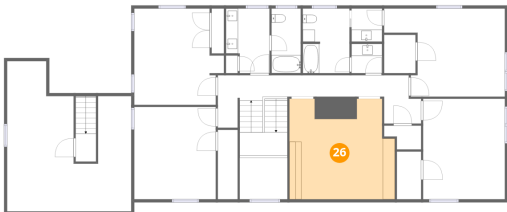
25 Floor 2 - Open To Below



Dimensions: 7'10" x 6'10"
Area: 54 sq. ft
Counted as living area: No

Heated: No
Finished: No
Enclosed: No
Contiguous: Yes
Permitted: No
Wet space: No
Addition: No
Conversion: No

26 Floor 2 - GAME/FAMILY Room



Dimensions: 17'5" x 16'7"
Area: 288 sq. ft
Counted as living area: Yes

Heated: Yes
Finished: Yes
Enclosed: Yes
Contiguous: Yes
Permitted: Yes
Wet space: No
Addition: No
Conversion: No

Home data report

2201 Lytle Street Southeast, Medical District, Huntsville,
Madison County, Alabama, United States, 35801

27 Floor 2 - Bath



Dimensions: 5'1" x 5'6"
Area: 28 sq. ft
Counted as living area: Yes

Heated: Yes
Finished: Yes
Enclosed: Yes
Contiguous: Yes
Permitted: Yes
Wet space: Yes
Addition: No
Conversion: No

28 Floor 2 - Hall



Dimensions: 3'4" x 4'7"
Area: 15 sq. ft
Counted as living area: Yes

Heated: Yes
Finished: Yes
Enclosed: Yes
Contiguous: Yes
Permitted: Yes
Wet space: No
Addition: No
Conversion: No

29 Floor 2 - W.I.C.



Dimensions: 5'2" x 6'4"
Area: 33 sq. ft
Counted as living area: Yes

Heated: Yes
Finished: Yes
Enclosed: Yes
Contiguous: Yes
Permitted: Yes
Wet space: No
Addition: No
Conversion: No

2201 Lytle Street Southeast, Medical District, Huntsville,
Madison County, Alabama, United States, 35801

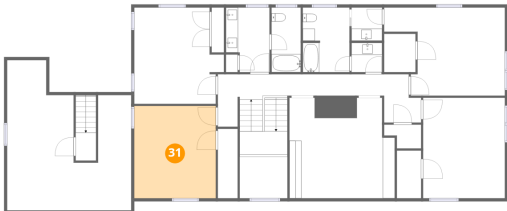
30 Floor 2 - Room



Dimensions: 20'5" x 24'9"
Area: 506 sq. ft
Counted as living area: Yes

Heated: Yes
Finished: Yes
Enclosed: Yes
Contiguous: Yes
Permitted: Yes
Wet space: No
Addition: No
Conversion: No

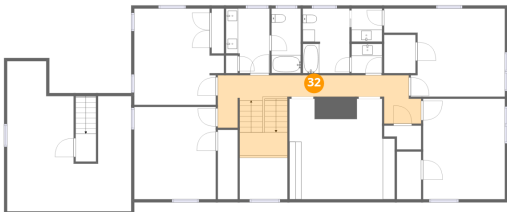
31 Floor 2 - Bedroom



Dimensions: 13'5" x 15'3"
Area: 205 sq. ft
Counted as living area: Yes

Heated: Yes
Finished: Yes
Enclosed: Yes
Contiguous: Yes
Permitted: Yes
Wet space: No
Addition: No
Conversion: No

32 Floor 2 - Hall



Dimensions: 31'6" x 8'8"
Area: 273 sq. ft
Counted as living area: Yes

Heated: Yes
Finished: Yes
Enclosed: Yes
Contiguous: Yes
Permitted: Yes
Wet space: No
Addition: No
Conversion: No