

Home data report

12354 E Caley Ave, Centennial, CO, US



Total Area: 1316 sq. ft

1st Floor: 1316 sq. ft

Excluded: Walls: 74 sq. ft

Property summary





Room dimensions

Floor 1

Total:1316sqft Excluded: 0sqft

#		Dimensions	sqft	Counted as living area
1	Office	11'2" x 12'2"	136 sq. ft	Yes
2	Room	17'1" x 8'1"	137 sq. ft	Yes
3	Kitchenette	11'2" x 7'0"	78 sq. ft	Yes
4	Office	24'2" x 20'7"	497 sq. ft	Yes
5	Office	12'1" x 9'7"	116 sq. ft	Yes
6	Office	14'1" x 11'1"	157 sq. ft	Yes
7	Room	14'1" x 10'5"	147 sq. ft	Yes
8	Foyer	10'7" x 10'5"	110 sq. ft	Yes

1 Floor 1 - Office



Dimensions: 11'2" x 12'2"
Area: 136 sq. ft
Counted as living area: Yes

Heated: Yes
Finished: Yes
Enclosed: Yes
Contiguous: Yes
Permitted: Yes
Wet space: No
Addition: No
Conversion: No

2 Floor 1 - Room



Dimensions: 17'1" x 8'1"
Area: 137 sq. ft
Counted as living area: Yes

Heated: Yes
Finished: Yes
Enclosed: Yes
Contiguous: Yes
Permitted: Yes
Wet space: No
Addition: No
Conversion: No

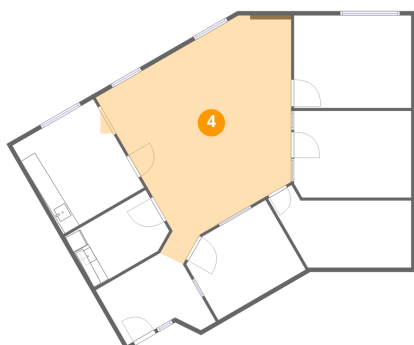
3 Floor 1 - Kitchenette



Dimensions: 11'2" x 7'0"
Area: 78 sq. ft
Counted as living area: Yes

Heated: Yes
Finished: Yes
Enclosed: Yes
Contiguous: Yes
Permitted: Yes
Wet space: No
Addition: No
Conversion: No

4 Floor 1 - Office



Dimensions: 24'2" x 20'7"
Area: 497 sq. ft
Counted as living area: Yes

Heated: Yes
Finished: Yes
Enclosed: Yes
Contiguous: Yes
Permitted: Yes
Wet space: No
Addition: No
Conversion: No

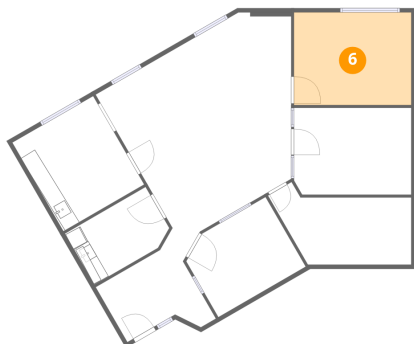
5 Floor 1 - Office



Dimensions: 12'1" x 9'7"
Area: 116 sq. ft
Counted as living area: Yes

Heated: Yes
Finished: Yes
Enclosed: Yes
Contiguous: Yes
Permitted: Yes
Wet space: No
Addition: No
Conversion: No

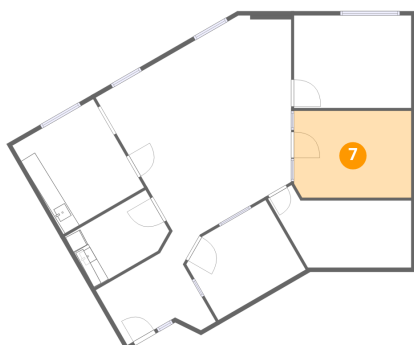
6 Floor 1 - Office



Dimensions: 14'1" x 11'1"
Area: 157 sq. ft
Counted as living area: Yes

Heated: Yes
Finished: Yes
Enclosed: Yes
Contiguous: Yes
Permitted: Yes
Wet space: No
Addition: No
Conversion: No

7 Floor 1 - Room



Dimensions: 14'1" x 10'5"
Area: 147 sq. ft
Counted as living area: Yes

Heated: Yes
Finished: Yes
Enclosed: Yes
Contiguous: Yes
Permitted: Yes
Wet space: No
Addition: No
Conversion: No

8 Floor 1 - Foyer



Dimensions: 10'7" x 10'5"
Area: 110 sq. ft
Counted as living area: Yes

Heated: Yes
Finished: Yes
Enclosed: Yes
Contiguous: Yes
Permitted: Yes
Wet space: No
Addition: No
Conversion: No