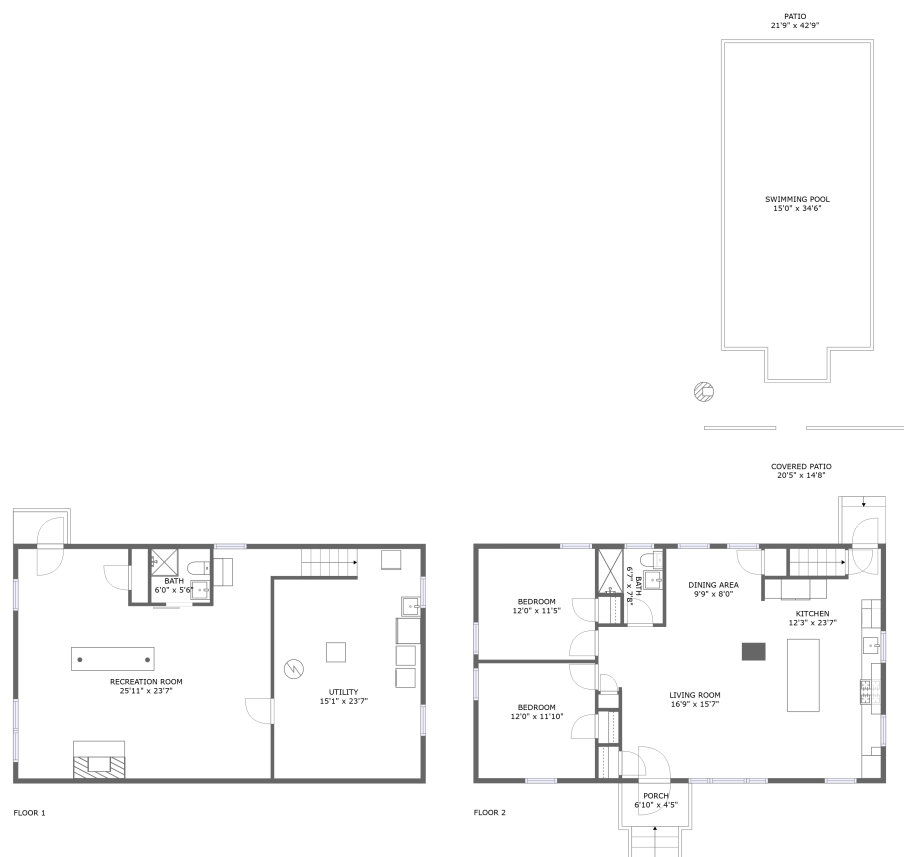


Home report

3117 Fleetwood Avenue Southwest, Cave Spring, Roanoke,  
Roanoke County, Virginia, United States, 24015




Total Area: 1610 sq. ft


Floor 1: 636 sq. ft, Floor 2: 974 sq. ft

Excluded: Utility 328 sq. ft, Undefined 9 sq. ft, Porch 46 sq. ft, Covered patio 265 sq. ft, Patio 447 sq. ft, Walls: 131 sq. ft

Property summary

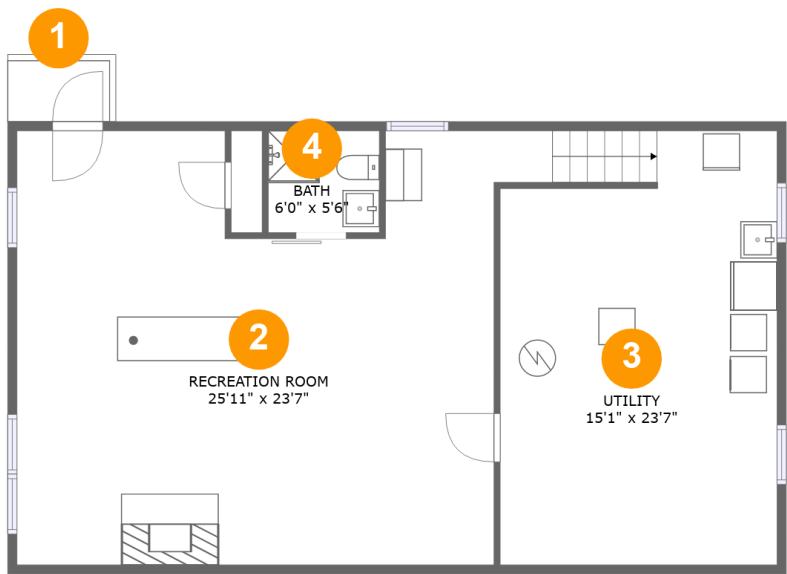
 2 Floors

 2 Bedrooms

 2 Bathrooms

Home report

3117 Fleetwood Avenue Southwest, Cave Spring, Roanoke,  
Roanoke County, Virginia, United States, 24015



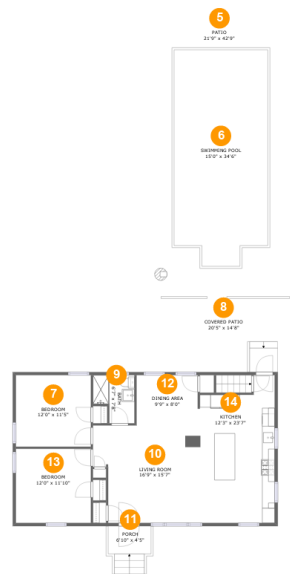
Room dimensions

Floor 1 Total:636sqft   Excluded: 337sqft

#		Max Dimensions	sqft	Included
1	Outdoor	5'6" x 3'4"	18 sq. ft	No
2	Recreation Room	25'11" x 23'7"	586 sq. ft	Yes
3	Utility	15'1" x 23'7"	328 sq. ft	No
4	Bath	6'0" x 5'6"	33 sq. ft	Yes

Home report

3117 Fleetwood Avenue Southwest, Cave Spring, Roanoke,  
Roanoke County, Virginia, United States, 24015



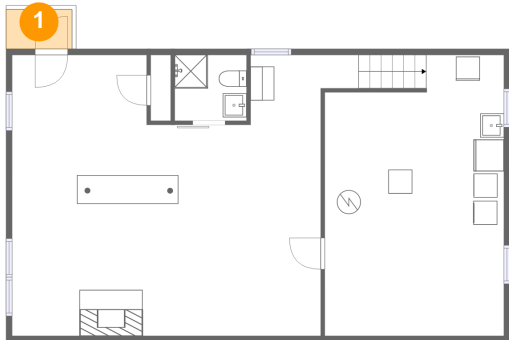
Room dimensions

Floor 2 Total:974sqft   Excluded: 758sqft

#		Max Dimensions	sqft	Included
5	Patio	21'9" x 42'9"	935 sq. ft	No
6	Swimming Pool	15'0" x 34'6"	488 sq. ft	No
7	Bedroom	12'0" x 11'5"	137 sq. ft	Yes
8	Covered Patio	20'5" x 14'8"	265 sq. ft	No
9	Bath	6'7" x 7'8"	43 sq. ft	Yes
10	Living Room	16'9" x 15'7"	238 sq. ft	Yes
11	Porch	6'10" x 4'5"	46 sq. ft	No
12	Dining Area	9'9" x 8'0"	78 sq. ft	Yes
13	Bedroom	12'0" x 11'10"	142 sq. ft	Yes
14	Kitchen	12'3" x 23'7"	261 sq. ft	Yes

3117 Fleetwood Avenue Southwest, Cave Spring, Roanoke,  
Roanoke County, Virginia, United States, 24015

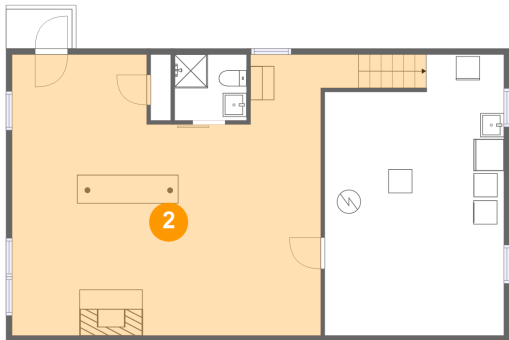
1 Floor 1 - Outdoor



Max Dimensions: 5'6" x 3'4"  
Calculated Area: 18 sq. ft  
Included: No

Heated: No  
Finished: No  
Enclosed: No  
Contiguous: Yes  
Permitted: No  
Wet space: No  
Addition: No  
Conversion: No

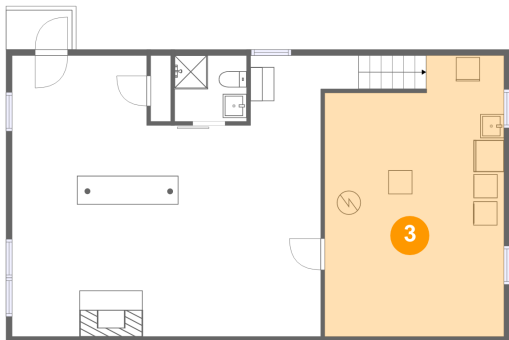
2 Floor 1 - Recreation Room



Max Dimensions: 25'11" x 23'7"  
Calculated Area: 586 sq. ft  
Included: No

Heated: Yes  
Finished: Yes  
Enclosed: Yes  
Contiguous: No  
Permitted: Yes  
Wet space: No  
Addition: No  
Conversion: No

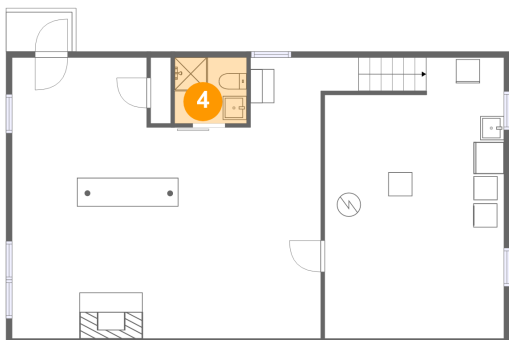
3 Floor 1 - Utility



Max Dimensions: 15'1" x 23'7"  
Calculated Area: 328 sq. ft  
Included: No

Heated: Yes  
Finished: No  
Enclosed: Yes  
Contiguous: Yes  
Permitted: Yes  
Wet space: No  
Addition: No  
Conversion: No

4 Floor 1 - Bath



Max Dimensions: 6'0" x 5'6"  
Calculated Area: 33 sq. ft  
Included: No

Heated: Yes  
Finished: Yes  
Enclosed: Yes  
Contiguous: No  
Permitted: Yes  
Wet space: Yes  
Addition: No  
Conversion: No

5 Floor 2 - Patio



Max Dimensions: 21'9" x 42'9"  
Calculated Area: 935 sq. ft  
Included: No

Heated: No  
Finished: Yes  
Enclosed: No  
Contiguous: Yes  
Permitted: Yes  
Wet space: No  
Addition: No  
Conversion: No

3117 Fleetwood Avenue Southwest, Cave Spring, Roanoke,  
Roanoke County, Virginia, United States, 24015

6 Floor 2 - Swimming Pool



Max Dimensions: 15'0" x 34'6"  
Calculated Area: 488 sq. ft  
Included: No

Heated: No  
Finished: No  
Enclosed: No  
Contiguous: Yes  
Permitted: No  
Wet space: No  
Addition: No  
Conversion: No

7 Floor 2 - Bedroom



Max Dimensions: 12'0" x 11'5"  
Calculated Area: 137 sq. ft  
Included: Yes

Heated: Yes  
Finished: Yes  
Enclosed: Yes  
Contiguous: Yes  
Permitted: Yes  
Wet space: No  
Addition: No  
Conversion: No

8 Floor 2 - Covered Patio



Max Dimensions: 20'5" x 14'8"  
Calculated Area: 265 sq. ft  
Included: No

Heated: No  
Finished: Yes  
Enclosed: No  
Contiguous: Yes  
Permitted: Yes  
Wet space: No  
Addition: No  
Conversion: No

3117 Fleetwood Avenue Southwest, Cave Spring, Roanoke,  
Roanoke County, Virginia, United States, 24015

9 Floor 2 - Bath



Max Dimensions: 6'7" x 7'8"  
Calculated Area: 43 sq. ft  
Included: Yes

Heated: Yes  
Finished: Yes  
Enclosed: Yes  
Contiguous: Yes  
Permitted: Yes  
Wet space: Yes  
Addition: No  
Conversion: No

10 Floor 2 - Living Room



Max Dimensions: 16'9" x 15'7"  
Calculated Area: 238 sq. ft  
Included: Yes

Heated: Yes  
Finished: Yes  
Enclosed: Yes  
Contiguous: Yes  
Permitted: Yes  
Wet space: No  
Addition: No  
Conversion: No

11 Floor 2 - Porch



Max Dimensions: 6'10" x 4'5"  
Calculated Area: 46 sq. ft  
Included: No

Heated: No  
Finished: Yes  
Enclosed: No  
Contiguous: Yes  
Permitted: Yes  
Wet space: No  
Addition: No  
Conversion: No

3117 Fleetwood Avenue Southwest, Cave Spring, Roanoke,  
Roanoke County, Virginia, United States, 24015

12 Floor 2 - Dining Area



Max Dimensions: 9'9" x 8'0"  
Calculated Area: 78 sq. ft  
Included: Yes

Heated: Yes  
Finished: Yes  
Enclosed: Yes  
Contiguous: Yes  
Permitted: Yes  
Wet space: No  
Addition: No  
Conversion: No

13 Floor 2 - Bedroom



Max Dimensions: 12'0" x 11'10"  
Calculated Area: 142 sq. ft  
Included: Yes

Heated: Yes  
Finished: Yes  
Enclosed: Yes  
Contiguous: Yes  
Permitted: Yes  
Wet space: No  
Addition: No  
Conversion: No

14 Floor 2 - Kitchen



Max Dimensions: 12'3" x 23'7"  
Calculated Area: 261 sq. ft  
Included: Yes

Heated: Yes  
Finished: Yes  
Enclosed: Yes  
Contiguous: Yes  
Permitted: Yes  
Wet space: No  
Addition: No  
Conversion: No