

Home data report

1030 Cobble Rose Ln, Moore Falls, ON, CA



Total Area: 1329 sq. ft

1st Floor: 1329 sq. ft

Excluded: Storage 79 sq. ft, Deck 72 sq. ft, Porch 101 sq. ft, Patio 37 sq. ft, Walls: 124 sq. ft

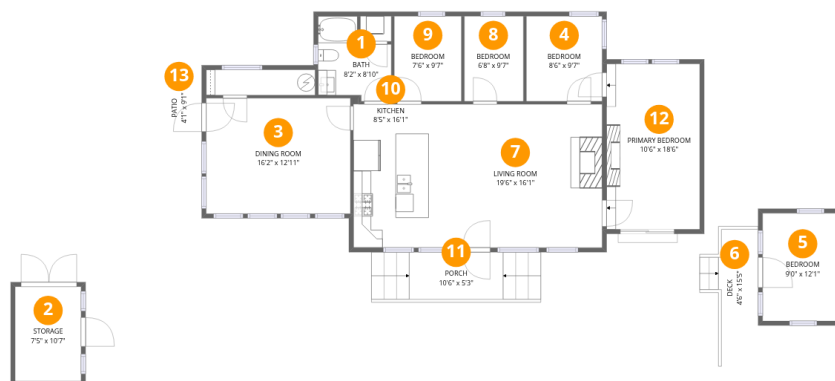
Property summary

 **1** Floors

 **5** Bedrooms

 **1** Bathrooms

1030 Cobble Rose Ln, Moore Falls, ON, CA



Room dimensions

Floor 1

Total: 1329 sqft

Excluded: 289 sqft

#		Dimensions	sqft	Counted as living area
1	Bath	8'2" x 8'10"	63 sq. ft	Yes
2	Storage	7'5" x 10'7"	79 sq. ft	No
3	Dining Room	16'2" x 12'11"	210 sq. ft	Yes
4	Bedroom	8'6" x 9'7"	81 sq. ft	Yes
5	Bedroom	9'0" x 12'1"	109 sq. ft	Yes
6	Deck	4'6" x 15'5"	72 sq. ft	No
7	Living Room	19'6" x 16'1"	314 sq. ft	Yes
8	Bedroom	6'8" x 9'7"	63 sq. ft	Yes
9	Bedroom	7'6" x 9'7"	72 sq. ft	Yes
10	Kitchen	8'5" x 16'1"	136 sq. ft	Yes
11	Porch	10'6" x 5'3"	101 sq. ft	No

Home data report

1030 Cobble Rose Ln, Moore Falls, ON, CA

#		Dimensions	sqft	Counted as living area
12	Primary Bedroom	10'6" x 18'6"	194 sq. ft	Yes
13	Patio	4'1" x 9'1"	37 sq. ft	No

1 Floor 1 - Bath



Dimensions: 8'2" x 8'10"
Area: 63 sq. ft
Counted as living area: Yes

Heated: Yes
Finished: Yes
Enclosed: Yes
Contiguous: Yes
Permitted: Yes
Wet space: Yes
Addition: No
Conversion: No

2 Floor 1 - Storage



Dimensions: 7'5" x 10'7"
Area: 79 sq. ft
Counted as living area: No

Heated: No
Finished: No
Enclosed: No
Contiguous: Yes
Permitted: Yes
Wet space: No
Addition: No
Conversion: No

3 Floor 1 - Dining Room



Dimensions: 16'2" x 12'11"
Area: 210 sq. ft
Counted as living area: Yes

Heated: Yes
Finished: Yes
Enclosed: Yes
Contiguous: Yes
Permitted: Yes
Wet space: No
Addition: No
Conversion: No

4 Floor 1 - Bedroom



Dimensions: 8'6" x 9'7"
Area: 81 sq. ft
Counted as living area: Yes

Heated: Yes
Finished: Yes
Enclosed: Yes
Contiguous: Yes
Permitted: Yes
Wet space: No
Addition: No
Conversion: No

5 Floor 1 - Bedroom



Dimensions: 9'0" x 12'1"
Area: 109 sq. ft
Counted as living area: Yes

Heated: Yes
Finished: Yes
Enclosed: Yes
Contiguous: Yes
Permitted: Yes
Wet space: No
Addition: No
Conversion: No

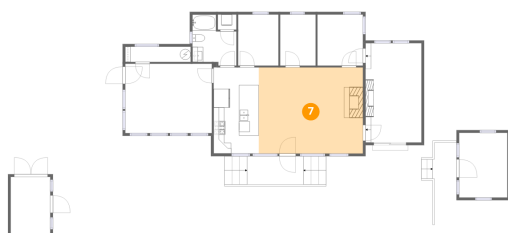
6 Floor 1 - Deck



Dimensions: 4'6" x 15'5"
Area: 72 sq. ft
Counted as living area: No

Heated: No
Finished: No
Enclosed: No
Contiguous: Yes
Permitted: Yes
Wet space: No
Addition: No
Conversion: No

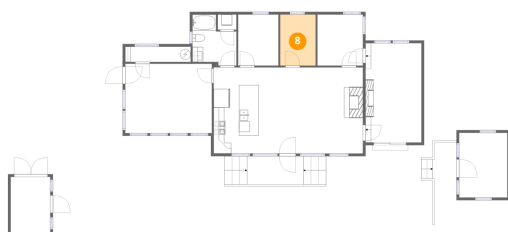
7 Floor 1 - Living Room



Dimensions: 19'6" x 16'1"
Area: 314 sq. ft
Counted as living area: Yes

Heated: Yes
Finished: Yes
Enclosed: Yes
Contiguous: Yes
Permitted: Yes
Wet space: No
Addition: No
Conversion: No

8 Floor 1 - Bedroom



Dimensions: 6'8" x 9'7"
Area: 63 sq. ft
Counted as living area: Yes

Heated: Yes
Finished: Yes
Enclosed: Yes
Contiguous: Yes
Permitted: Yes
Wet space: No
Addition: No
Conversion: No

9 Floor 1 - Bedroom



Dimensions: 7'6" x 9'7"
Area: 72 sq. ft
Counted as living area: Yes

Heated: Yes
Finished: Yes
Enclosed: Yes
Contiguous: Yes
Permitted: Yes
Wet space: No
Addition: No
Conversion: No

10 Floor 1 - Kitchen



Dimensions: 8'5" x 16'1"
Area: 136 sq. ft
Counted as living area: Yes

Heated: Yes
Finished: Yes
Enclosed: Yes
Contiguous: Yes
Permitted: Yes
Wet space: No
Addition: No
Conversion: No

11 Floor 1 - Porch



Dimensions: 10'6" x 5'3"
Area: 101 sq. ft
Counted as living area: No

Heated: No
Finished: No
Enclosed: No
Contiguous: Yes
Permitted: Yes
Wet space: No
Addition: No
Conversion: No

12 Floor 1 - Primary Bedroom



Dimensions: 10'6" x 18'6"
Area: 194 sq. ft
Counted as living area: Yes

Heated: Yes
Finished: Yes
Enclosed: Yes
Contiguous: Yes
Permitted: Yes
Wet space: No
Addition: No
Conversion: No

13 Floor 1 - Patio



Dimensions: 4'1" x 9'1"
Area: 37 sq. ft
Counted as living area: No

Heated: No
Finished: No
Enclosed: No
Contiguous: Yes
Permitted: Yes
Wet space: No
Addition: No
Conversion: No