

Home data report

4758 Bandy Road, Roanoke, Roanoke County, Virginia, United States, 24014

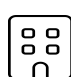


Total Area: 1336 sq. ft

Basement: 0 sq. ft, 1st Floor: 1336 sq. ft

Excluded: Basement 1044 sq. ft, Fireplace 12 sq. ft, Deck 99 sq. ft, Porch 25 sq. ft, Walls: 145 sq. ft

Property summary

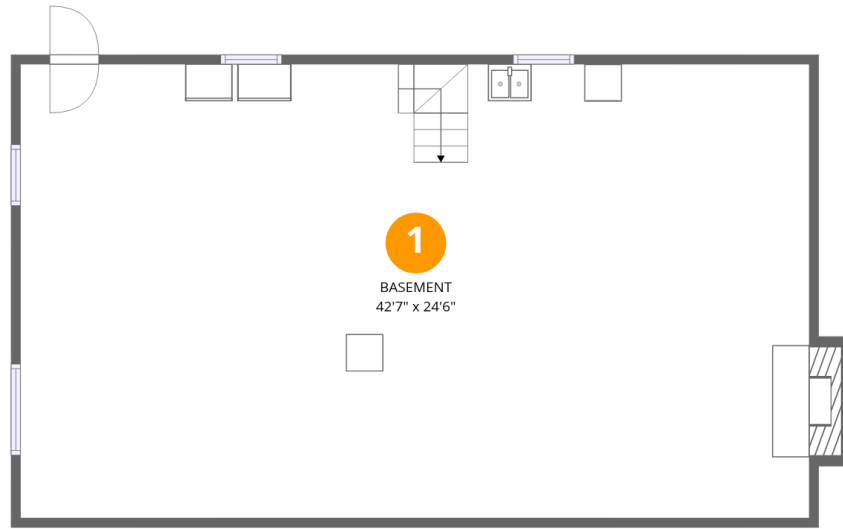
 **2**
Floors

 **2**
Bedrooms

 **2**
Bathrooms

Home data report

4758 Bandy Road, Roanoke, Roanoke County, Virginia, United States, 24014



Room dimensions

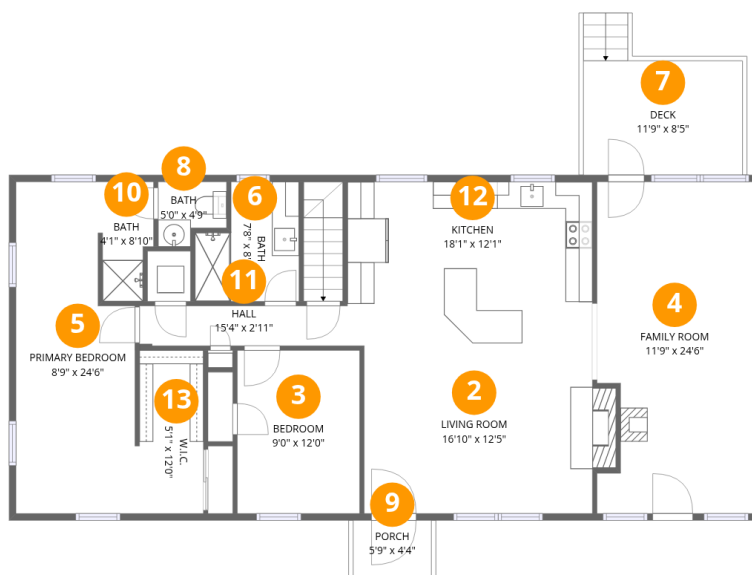
Floor 1 Below grade

Total:0sqft

Excluded: 1056sqft

#		Dimensions	sqft	Counted as living area
1	Basement	42'7" x 24'6"	1051 sq. ft	No

4758 Bandy Road, Roanoke, Roanoke County, Virginia, United States, 24014



Room dimensions

Floor 2

Total:1336sqft Excluded: 124sqft

#		Dimensions	sqft	Counted as living area
2	Living Room	16'10" x 12'5"	219 sq. ft	Yes
3	Bedroom	9'0" x 12'0"	109 sq. ft	Yes
4	Family Room	11'9" x 24'6"	276 sq. ft	Yes
5	Primary Bedroom	8'9" x 24'6"	190 sq. ft	Yes
6	Bath	7'8" x 8'10"	58 sq. ft	Yes
7	Deck	11'9" x 8'5"	99 sq. ft	No
8	Bath	5'0" x 4'9"	20 sq. ft	Yes
9	Porch	5'9" x 4'4"	25 sq. ft	No
10	Bath	4'1" x 8'10"	31 sq. ft	Yes
11	Hall	15'4" x 2'11"	45 sq. ft	Yes
12	Kitchen	18'1" x 12'1"	218 sq. ft	Yes

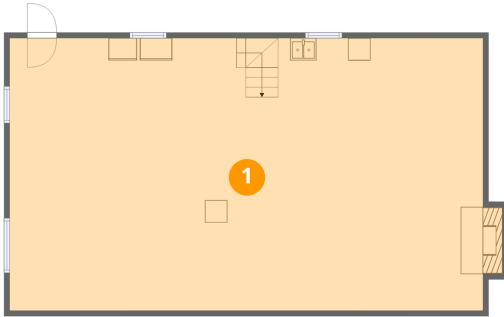
Home data report

4758 Bandy Road, Roanoke, Roanoke County, Virginia, United States, 24014

#		Dimensions	sqft	Counted as living area
13	W.I.C.	5'1" x 12'0"	58 sq. ft	Yes

4758 Bandy Road, Roanoke, Roanoke County, Virginia, United States, 24014

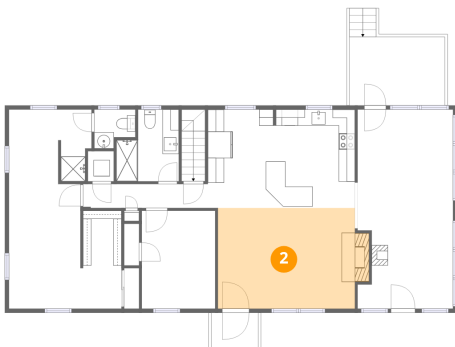
1 Floor 1 - Basement



Dimensions: 42'7" x 24'6"
Area: 1051 sq. ft
Counted as living area: No

Heated: Yes
Finished: No
Enclosed: Yes
Contiguous: Yes
Permitted: Yes
Wet space: No
Addition: No
Conversion: No

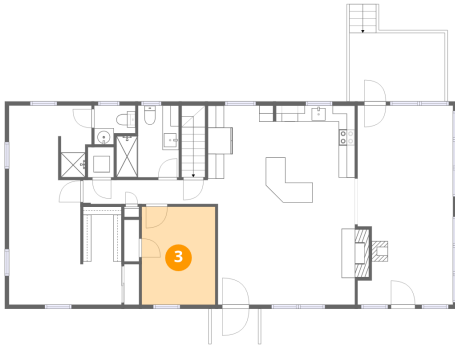
2 Floor 2 - Living Room



Dimensions: 16'10" x 12'5"
Area: 219 sq. ft
Counted as living area: Yes

Heated: Yes
Finished: Yes
Enclosed: Yes
Contiguous: Yes
Permitted: Yes
Wet space: No
Addition: No
Conversion: No

3 Floor 2 - Bedroom



Dimensions: 9'0" x 12'0"
Area: 109 sq. ft
Counted as living area: Yes

Heated: Yes
Finished: Yes
Enclosed: Yes
Contiguous: Yes
Permitted: Yes
Wet space: No
Addition: No
Conversion: No

4 Floor 2 - Family Room



Dimensions: 11'9" x 24'6"
Area: 276 sq. ft
Counted as living area: Yes

Heated: Yes
Finished: Yes
Enclosed: Yes
Contiguous: Yes
Permitted: Yes
Wet space: No
Addition: No
Conversion: No

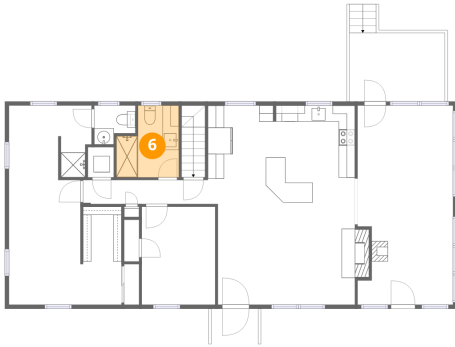
5 Floor 2 - Primary Bedroom



Dimensions: 8'9" x 24'6"
Area: 190 sq. ft
Counted as living area: Yes

Heated: Yes
Finished: Yes
Enclosed: Yes
Contiguous: Yes
Permitted: Yes
Wet space: No
Addition: No
Conversion: No

6 Floor 2 - Bath



Dimensions: 7'8" x 8'10"
Area: 58 sq. ft
Counted as living area: Yes

Heated: Yes
Finished: Yes
Enclosed: Yes
Contiguous: Yes
Permitted: Yes
Wet space: Yes
Addition: No
Conversion: No

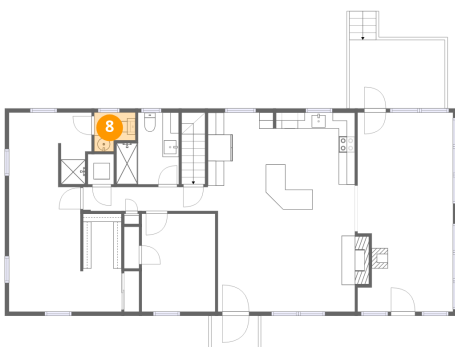
7 Floor 2 - Deck



Dimensions: 11'9" x 8'5"
Area: 99 sq. ft
Counted as living area: No

Heated: No
Finished: No
Enclosed: No
Contiguous: Yes
Permitted: Yes
Wet space: No
Addition: No
Conversion: No

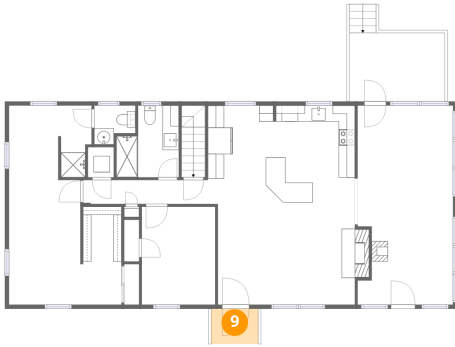
8 Floor 2 - Bath



Dimensions: 5'0" x 4'9"
Area: 20 sq. ft
Counted as living area: Yes

Heated: Yes
Finished: Yes
Enclosed: Yes
Contiguous: Yes
Permitted: Yes
Wet space: Yes
Addition: No
Conversion: No

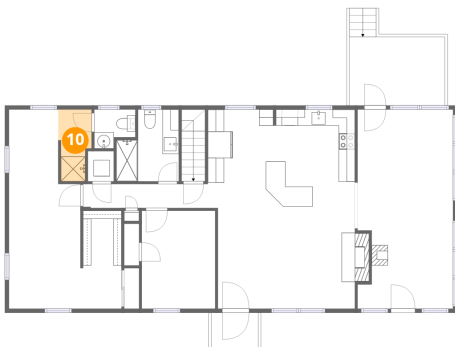
9 Floor 2 - Porch



Dimensions: 5'9" x 4'4"
Area: 25 sq. ft
Counted as living area: No

Heated: No
Finished: No
Enclosed: No
Contiguous: Yes
Permitted: Yes
Wet space: No
Addition: No
Conversion: No

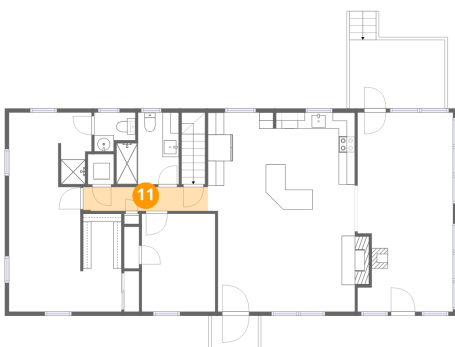
10 Floor 2 - Bath



Dimensions: 4'1" x 8'10"
Area: 31 sq. ft
Counted as living area: Yes

Heated: Yes
Finished: Yes
Enclosed: Yes
Contiguous: Yes
Permitted: Yes
Wet space: Yes
Addition: No
Conversion: No

11 Floor 2 - Hall



Dimensions: 15'4" x 2'11"
Area: 45 sq. ft
Counted as living area: Yes

Heated: Yes
Finished: Yes
Enclosed: Yes
Contiguous: Yes
Permitted: Yes
Wet space: No
Addition: No
Conversion: No

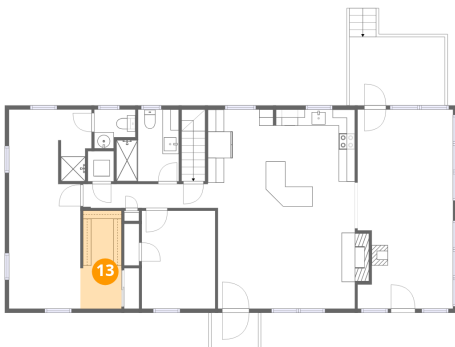
12 Floor 2 - Kitchen



Dimensions: 18'1" x 12'1"
Area: 218 sq. ft
Counted as living area: Yes

Heated: Yes
Finished: Yes
Enclosed: Yes
Contiguous: Yes
Permitted: Yes
Wet space: No
Addition: No
Conversion: No

13 Floor 2 - W.I.C.



Dimensions: 5'1" x 12'0"
Area: 58 sq. ft
Counted as living area: Yes

Heated: Yes
Finished: Yes
Enclosed: Yes
Contiguous: Yes
Permitted: Yes
Wet space: No
Addition: No
Conversion: No