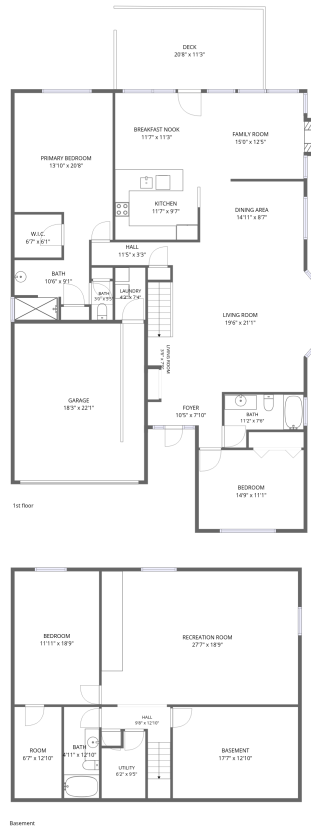


Home data report

# 8970 Greenwich Ct, Littleton, CO, US




**Total Area: 2846 sq. ft**

Basement: 995 sq. ft, 1st Floor: 1851 sq. ft

Excluded: Basement 226 sq. ft, Utility 51 sq. ft, Garage 402 sq. ft, Deck 234 sq. ft, Fireplace 12 sq. ft, Walls: 198 sq. ft

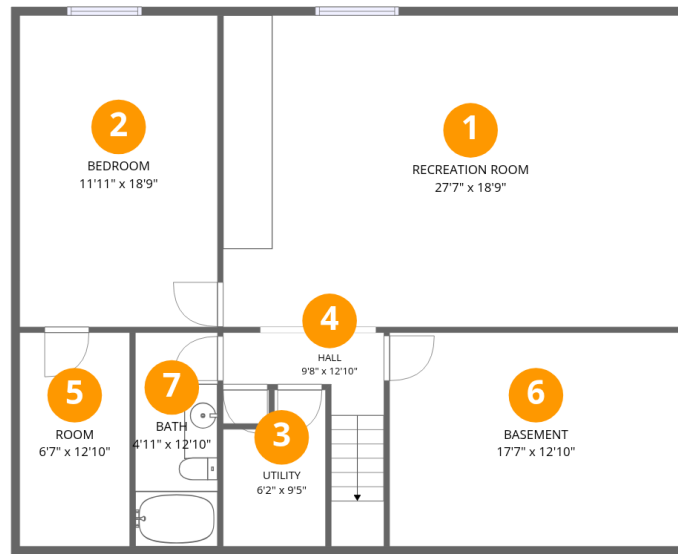
## Property summary

 **2** Floors

 **3** Bedrooms

 **3** Bathrooms

 **1** Garages



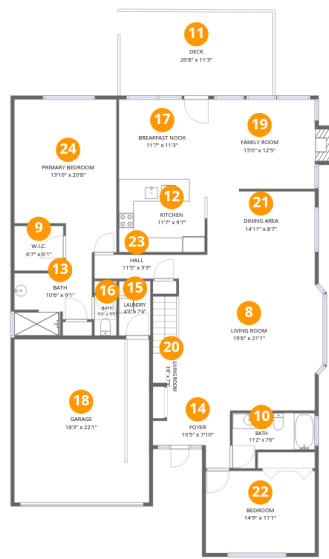
## Room dimensions

Floor 1 Below grade

Total: 995 sqft

Excluded: 277 sqft

#		Dimensions	sqft	Counted as living area
1	Recreation Room	27'7" x 18'9"	517 sq. ft	Yes
2	Bedroom	11'11" x 18'9"	223 sq. ft	Yes
3	Utility	6'2" x 9'5"	51 sq. ft	No
4	Hall	9'8" x 12'10"	61 sq. ft	Yes
5	Room	6'7" x 12'10"	85 sq. ft	Yes
6	Basement	17'7" x 12'10"	226 sq. ft	No
7	Bath	4'11" x 12'10"	64 sq. ft	Yes



## Room dimensions

Floor 2

Total: 1851 sqft

Excluded: 648 sqft

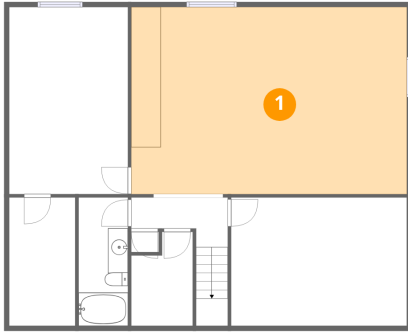
#		Dimensions	sqft	Counted as living area
8	Living Room	19'6" x 21'1"	399 sq. ft	Yes
9	W.I.C.	6'7" x 6'1"	40 sq. ft	Yes
10	Bath	11'2" x 7'6"	63 sq. ft	Yes
11	Deck	20'8" x 11'3"	234 sq. ft	No
12	Kitchen	11'7" x 9'7"	110 sq. ft	Yes
13	Bath	10'6" x 9'1"	88 sq. ft	Yes
14	Foyer	10'5" x 7'10"	56 sq. ft	Yes
15	Laundry	4'3" x 7'4"	31 sq. ft	Yes
16	Bath	3'0" x 5'5"	16 sq. ft	Yes
17	Breakfast Nook	11'7" x 11'3"	130 sq. ft	Yes
18	Garage	18'3" x 22'1"	402 sq. ft	No

Home data report

8970 Greenwich Ct, Littleton, CO, US

#		Dimensions	sqft	Counted as living area
19	Family Room	15'0" x 12'5"	192 sq. ft	Yes
20	Living Room	3'6" x 7'9"	47 sq. ft	Yes
21	Dining Area	14'11" x 8'7"	126 sq. ft	Yes
22	Bedroom	14'9" x 11'1"	164 sq. ft	Yes
23	Hall	11'5" x 3'3"	37 sq. ft	Yes
24	Primary Bedroom	13'10" x 20'8"	258 sq. ft	Yes

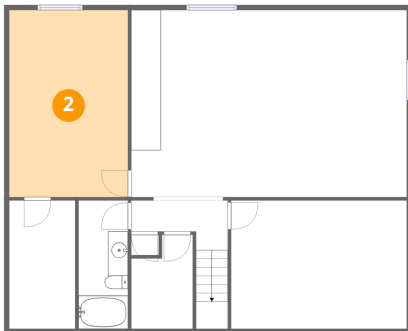
## 1 Floor 1 - Recreation Room



Dimensions: 27'7" x 18'9"  
Area: 517 sq. ft  
Counted as living area: Yes

Heated: Yes  
Finished: Yes  
Enclosed: Yes  
Contiguous: Yes  
Permitted: Yes  
Wet space: No  
Addition: No  
Conversion: No

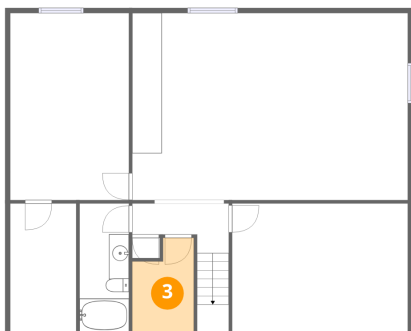
## 2 Floor 1 - Bedroom



Dimensions: 11'11" x 18'9"  
Area: 223 sq. ft  
Counted as living area: Yes

Heated: Yes  
Finished: Yes  
Enclosed: Yes  
Contiguous: Yes  
Permitted: Yes  
Wet space: No  
Addition: No  
Conversion: No

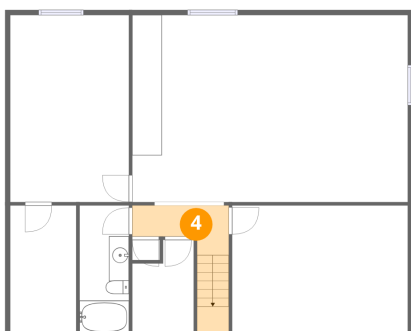
### 3 Floor 1 - Utility



Dimensions: 6'2" x 9'5"  
Area: 51 sq. ft  
Counted as living area: No

Heated: Yes  
Finished: No  
Enclosed: Yes  
Contiguous: Yes  
Permitted: Yes  
Wet space: No  
Addition: No  
Conversion: No

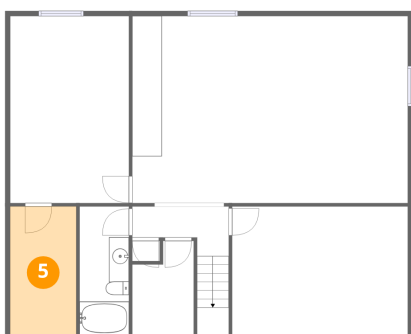
### 4 Floor 1 - Hall



Dimensions: 9'8" x 12'10"  
Area: 61 sq. ft  
Counted as living area: Yes

Heated: Yes  
Finished: Yes  
Enclosed: Yes  
Contiguous: Yes  
Permitted: Yes  
Wet space: No  
Addition: No  
Conversion: No

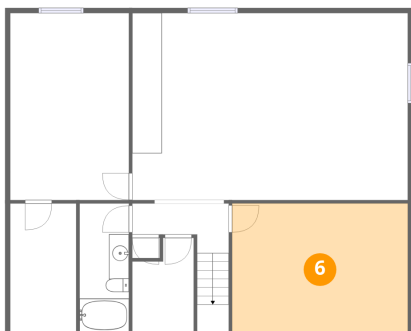
### 5 Floor 1 - Room



Dimensions: 6'7" x 12'10"  
Area: 85 sq. ft  
Counted as living area: Yes

Heated: Yes  
Finished: Yes  
Enclosed: Yes  
Contiguous: Yes  
Permitted: Yes  
Wet space: No  
Addition: No  
Conversion: No

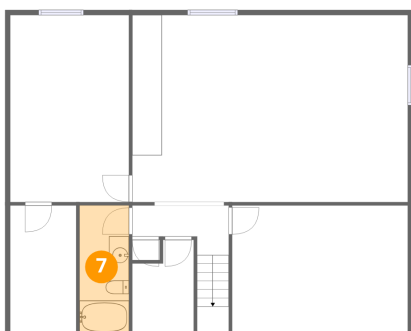
### 6 Floor 1 - Basement



Dimensions: 17'7" x 12'10"  
Area: 226 sq. ft  
Counted as living area: No

Heated: Yes  
Finished: No  
Enclosed: Yes  
Contiguous: Yes  
Permitted: Yes  
Wet space: No  
Addition: No  
Conversion: No

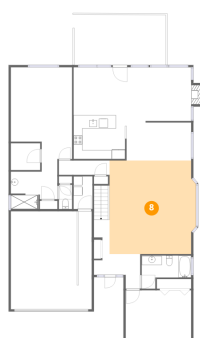
### 7 Floor 1 - Bath



Dimensions: 4'11" x 12'10"  
Area: 64 sq. ft  
Counted as living area: Yes

Heated: Yes  
Finished: Yes  
Enclosed: Yes  
Contiguous: Yes  
Permitted: Yes  
Wet space: Yes  
Addition: No  
Conversion: No

### 8 Floor 2 - Living Room



Dimensions: 19'6" x 21'1"  
Area: 399 sq. ft  
Counted as living area: Yes

Heated: Yes  
Finished: Yes  
Enclosed: Yes  
Contiguous: Yes  
Permitted: Yes  
Wet space: No  
Addition: No  
Conversion: No

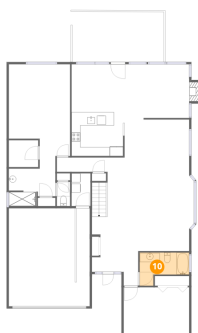
**9** Floor 2 - W.I.C.



Dimensions: 6'7" x 6'1"  
Area: 40 sq. ft  
Counted as living area: Yes

Heated: Yes  
Finished: Yes  
Enclosed: Yes  
Contiguous: Yes  
Permitted: Yes  
Wet space: No  
Addition: No  
Conversion: No

**10** Floor 2 - Bath



Dimensions: 11'2" x 7'6"  
Area: 63 sq. ft  
Counted as living area: Yes

Heated: Yes  
Finished: Yes  
Enclosed: Yes  
Contiguous: Yes  
Permitted: Yes  
Wet space: Yes  
Addition: No  
Conversion: No

**11** Floor 2 - Deck



Dimensions: 20'8" x 11'3"  
Area: 234 sq. ft  
Counted as living area: No

Heated: No  
Finished: No  
Enclosed: No  
Contiguous: Yes  
Permitted: Yes  
Wet space: No  
Addition: No  
Conversion: No

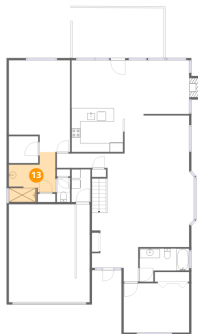
## 12 Floor 2 - Kitchen



Dimensions: 11'7" x 9'7"  
Area: 110 sq. ft  
Counted as living area: Yes

Heated: Yes  
Finished: Yes  
Enclosed: Yes  
Contiguous: Yes  
Permitted: Yes  
Wet space: No  
Addition: No  
Conversion: No

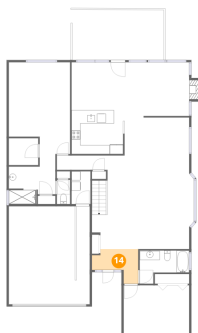
## 13 Floor 2 - Bath



Dimensions: 10'6" x 9'1"  
Area: 88 sq. ft  
Counted as living area: Yes

Heated: Yes  
Finished: Yes  
Enclosed: Yes  
Contiguous: Yes  
Permitted: Yes  
Wet space: Yes  
Addition: No  
Conversion: No

## 14 Floor 2 - Foyer



Dimensions: 10'5" x 7'10"  
Area: 56 sq. ft  
Counted as living area: Yes

Heated: Yes  
Finished: Yes  
Enclosed: Yes  
Contiguous: Yes  
Permitted: Yes  
Wet space: No  
Addition: No  
Conversion: No

### 15 Floor 2 - Laundry

---



Dimensions: 4'3" x 7'4"  
Area: 31 sq. ft  
Counted as living area: Yes

Heated: Yes  
Finished: Yes  
Enclosed: Yes  
Contiguous: Yes  
Permitted: Yes  
Wet space: No  
Addition: No  
Conversion: No

### 16 Floor 2 - Bath

---

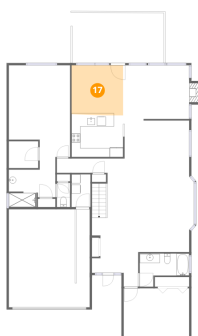


Dimensions: 3'0" x 5'5"  
Area: 16 sq. ft  
Counted as living area: Yes

Heated: Yes  
Finished: Yes  
Enclosed: Yes  
Contiguous: Yes  
Permitted: Yes  
Wet space: No  
Addition: No  
Conversion: No

### 17 Floor 2 - Breakfast Nook

---



Dimensions: 11'7" x 11'3"  
Area: 130 sq. ft  
Counted as living area: Yes

Heated: Yes  
Finished: Yes  
Enclosed: Yes  
Contiguous: Yes  
Permitted: Yes  
Wet space: No  
Addition: No  
Conversion: No

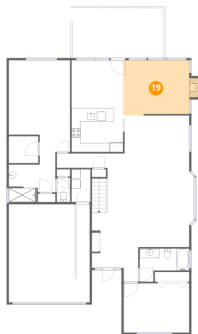
## 18 Floor 2 - Garage



Dimensions: 18'3" x 22'1"  
Area: 402 sq. ft  
Counted as living area: No

Heated: No  
Finished: No  
Enclosed: Yes  
Contiguous: Yes  
Permitted: Yes  
Wet space: No  
Addition: No  
Conversion: No

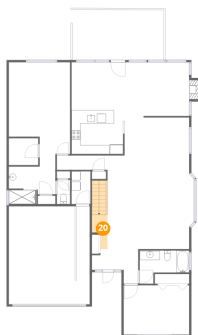
## 19 Floor 2 - Family Room



Dimensions: 15'0" x 12'5"  
Area: 192 sq. ft  
Counted as living area: Yes

Heated: Yes  
Finished: Yes  
Enclosed: Yes  
Contiguous: Yes  
Permitted: Yes  
Wet space: No  
Addition: No  
Conversion: No

## 20 Floor 2 - Living Room

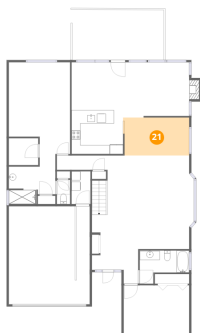


Dimensions: 3'6" x 7'9"  
Area: 47 sq. ft  
Counted as living area: Yes

Heated: Yes  
Finished: Yes  
Enclosed: Yes  
Contiguous: Yes  
Permitted: Yes  
Wet space: No  
Addition: No  
Conversion: No

### 21 Floor 2 - Dining Area

---

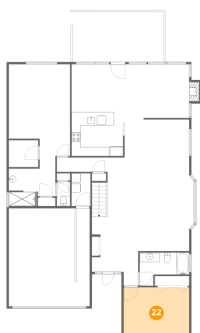


Dimensions: 14'11" x 8'7"  
Area: 126 sq. ft  
Counted as living area: Yes

Heated: Yes  
Finished: Yes  
Enclosed: Yes  
Contiguous: Yes  
Permitted: Yes  
Wet space: No  
Addition: No  
Conversion: No

### 22 Floor 2 - Bedroom

---

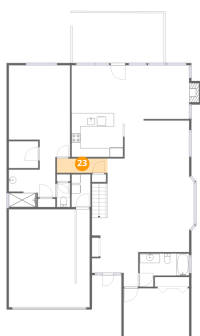


Dimensions: 14'9" x 11'1"  
Area: 164 sq. ft  
Counted as living area: Yes

Heated: Yes  
Finished: Yes  
Enclosed: Yes  
Contiguous: Yes  
Permitted: Yes  
Wet space: No  
Addition: No  
Conversion: No

### 23 Floor 2 - Hall

---

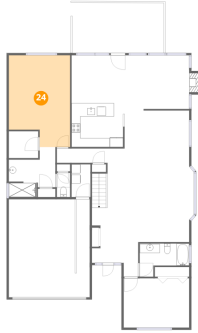


Dimensions: 11'5" x 3'3"  
Area: 37 sq. ft  
Counted as living area: Yes

Heated: Yes  
Finished: Yes  
Enclosed: Yes  
Contiguous: Yes  
Permitted: Yes  
Wet space: No  
Addition: No  
Conversion: No

**24** Floor 2 - Primary Bedroom

---



**Dimensions:** 13'10" x 20'8"  
**Area:** 258 sq. ft  
**Counted as living area:** Yes

**Heated:** Yes  
**Finished:** Yes  
**Enclosed:** Yes  
**Contiguous:** Yes  
**Permitted:** Yes  
**Wet space:** No  
**Addition:** No  
**Conversion:** No