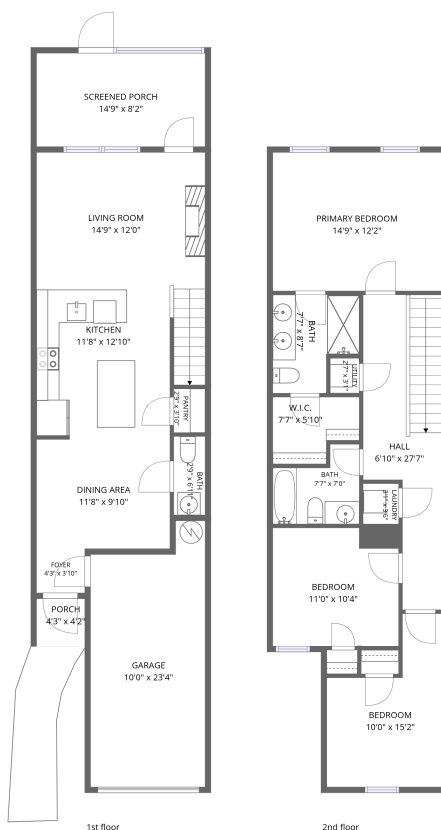


Home data report

3154 Victoria Inlet Drive, Beacon Square, Holiday, Pasco County, Florida, United States, 34691



Total Area: 1282 sq. ft

1st Floor: 520 sq. ft, 2nd Floor: 762 sq. ft

Excluded: Screened porch 121 sq. ft, Porch 18 sq. ft, Garage 212 sq. ft, Walls: 114 sq. ft

Property summary

 **2** Floors

 **3** Bedrooms

 **2** Bathrooms

Home data report

**3154 Victoria Inlet Drive, Beacon Square, Holiday, Pasco County,
Florida, United States, 34691**



1
Half baths



1
Garages

Home data report

3154 Victoria Inlet Drive, Beacon Square, Holiday, Pasco County, Florida, United States, 34691



Room dimensions

Floor 1

Total:520sqft Excluded: 351sqft

#		Dimensions	sqft	Counted as living area
1	Living Room	14'9" x 12'0"	178 sq. ft	Yes
2	Garage	10'0" x 23'4"	212 sq. ft	No
3	Porch	4'3" x 4'2"	18 sq. ft	No
4	Screened Porch	14'9" x 8'2"	121 sq. ft	No
5	Foyer	4'3" x 3'10"	16 sq. ft	Yes
6	Pantry	2'9" x 3'10"	11 sq. ft	Yes
7	Dining Area	11'8" x 9'10"	114 sq. ft	Yes
8	Bath	2'9" x 6'11"	19 sq. ft	Yes
9	Walking Path	4'5" x 15'6"	63 sq. ft	No
10	Kitchen	11'8" x 12'10"	173 sq. ft	Yes

Home data report

3154 Victoria Inlet Drive, Beacon Square, Holiday, Pasco County, Florida, United States, 34691



Room dimensions

Floor 2

Total:762sqft Excluded: 0sqft

#		Dimensions	sqft	Counted as living area
11	Laundry	3'1" x 3'6"	11 sq. ft	Yes
12	Bedroom	11'0" x 10'4"	108 sq. ft	Yes
13	Primary Bedroom	14'9" x 12'2"	179 sq. ft	Yes
14	Bath	7'7" x 8'7"	55 sq. ft	Yes
15	Bedroom	10'0" x 15'2"	115 sq. ft	Yes
16	W.I.C.	7'7" x 5'10"	38 sq. ft	Yes
17	Utility	2'7" x 3'1"	8 sq. ft	Yes
18	Hall	6'10" x 27'7"	150 sq. ft	Yes
19	Bath	7'7" x 7'0"	43 sq. ft	Yes

3154 Victoria Inlet Drive, Beacon Square, Holiday, Pasco County, Florida, United States, 34691

1 Floor 1 - Living Room



Dimensions: 14'9" x 12'0"
Area: 178 sq. ft
Counted as living area: Yes

Heated: Yes
Finished: Yes
Enclosed: Yes
Contiguous: Yes
Permitted: Yes
Wet space: No
Addition: No
Conversion: No

2 Floor 1 - Garage



Dimensions: 10'0" x 23'4"
Area: 212 sq. ft
Counted as living area: No

Heated: No
Finished: No
Enclosed: Yes
Contiguous: Yes
Permitted: Yes
Wet space: No
Addition: No
Conversion: No

3154 Victoria Inlet Drive, Beacon Square, Holiday, Pasco County, Florida, United States, 34691

3 Floor 1 - Porch



Dimensions: 4'3" x 4'2"
Area: 18 sq. ft
Counted as living area: No

Heated: No
Finished: No
Enclosed: No
Contiguous: Yes
Permitted: Yes
Wet space: No
Addition: No
Conversion: No

4 Floor 1 - Screened Porch



Dimensions: 14'9" x 8'2"
Area: 121 sq. ft
Counted as living area: No

Heated: No
Finished: No
Enclosed: No
Contiguous: Yes
Permitted: Yes
Wet space: No
Addition: No
Conversion: No

5 Floor 1 - Foyer



Dimensions: 4'3" x 3'10"
Area: 16 sq. ft
Counted as living area: Yes

Heated: Yes
Finished: Yes
Enclosed: Yes
Contiguous: Yes
Permitted: Yes
Wet space: No
Addition: No
Conversion: No

3154 Victoria Inlet Drive, Beacon Square, Holiday, Pasco County, Florida, United States, 34691

6 Floor 1 - Pantry



Dimensions: 2'9" x 3'10"
Area: 11 sq. ft
Counted as living area: Yes

Heated: Yes
Finished: Yes
Enclosed: Yes
Contiguous: Yes
Permitted: Yes
Wet space: No
Addition: No
Conversion: No

7 Floor 1 - Dining Area



Dimensions: 11'8" x 9'10"
Area: 114 sq. ft
Counted as living area: Yes

Heated: Yes
Finished: Yes
Enclosed: Yes
Contiguous: Yes
Permitted: Yes
Wet space: No
Addition: No
Conversion: No

8 Floor 1 - Bath



Dimensions: 2'9" x 6'11"
Area: 19 sq. ft
Counted as living area: Yes

Heated: Yes
Finished: Yes
Enclosed: Yes
Contiguous: Yes
Permitted: Yes
Wet space: Yes
Addition: No
Conversion: No

3154 Victoria Inlet Drive, Beacon Square, Holiday, Pasco County, Florida, United States, 34691

9 Floor 1 - Walking Path



Dimensions: 4'5" x 15'6"
Area: 63 sq. ft
Counted as living area: No

Heated: No
Finished: No
Enclosed: No
Contiguous: Yes
Permitted: No
Wet space: No
Addition: No
Conversion: No

10 Floor 1 - Kitchen



Dimensions: 11'8" x 12'10"
Area: 173 sq. ft
Counted as living area: Yes

Heated: Yes
Finished: Yes
Enclosed: Yes
Contiguous: Yes
Permitted: Yes
Wet space: No
Addition: No
Conversion: No

11 Floor 2 - Laundry



Dimensions: 3'1" x 3'6"
Area: 11 sq. ft
Counted as living area: Yes

Heated: Yes
Finished: Yes
Enclosed: Yes
Contiguous: Yes
Permitted: Yes
Wet space: No
Addition: No
Conversion: No

3154 Victoria Inlet Drive, Beacon Square, Holiday, Pasco County, Florida, United States, 34691

12 Floor 2 - Bedroom



Dimensions: 11'0" x 10'4"
Area: 108 sq. ft
Counted as living area: Yes

Heated: Yes
Finished: Yes
Enclosed: Yes
Contiguous: Yes
Permitted: Yes
Wet space: No
Addition: No
Conversion: No

13 Floor 2 - Primary Bedroom



Dimensions: 14'9" x 12'2"
Area: 179 sq. ft
Counted as living area: Yes

Heated: Yes
Finished: Yes
Enclosed: Yes
Contiguous: Yes
Permitted: Yes
Wet space: No
Addition: No
Conversion: No

14 Floor 2 - Bath



Dimensions: 7'7" x 8'7"
Area: 55 sq. ft
Counted as living area: Yes

Heated: Yes
Finished: Yes
Enclosed: Yes
Contiguous: Yes
Permitted: Yes
Wet space: Yes
Addition: No
Conversion: No

3154 Victoria Inlet Drive, Beacon Square, Holiday, Pasco County, Florida, United States, 34691

15 Floor 2 - Bedroom



Dimensions: 10'0" x 15'2"
Area: 115 sq. ft
Counted as living area: Yes

Heated: Yes
Finished: Yes
Enclosed: Yes
Contiguous: Yes
Permitted: Yes
Wet space: No
Addition: No
Conversion: No

16 Floor 2 - W.I.C.



Dimensions: 7'7" x 5'10"
Area: 38 sq. ft
Counted as living area: Yes

Heated: Yes
Finished: Yes
Enclosed: Yes
Contiguous: Yes
Permitted: Yes
Wet space: No
Addition: No
Conversion: No

17 Floor 2 - Utility



Dimensions: 2'7" x 3'1"
Area: 8 sq. ft
Counted as living area: Yes

Heated: Yes
Finished: Yes
Enclosed: Yes
Contiguous: Yes
Permitted: Yes
Wet space: No
Addition: No
Conversion: No

3154 Victoria Inlet Drive, Beacon Square, Holiday, Pasco County, Florida, United States, 34691

18 Floor 2 - Hall



Dimensions: 6'10" x 27'7"
Area: 150 sq. ft
Counted as living area: Yes

Heated: Yes
Finished: Yes
Enclosed: Yes
Contiguous: Yes
Permitted: Yes
Wet space: No
Addition: No
Conversion: No

19 Floor 2 - Bath



Dimensions: 7'7" x 7'0"
Area: 43 sq. ft
Counted as living area: Yes

Heated: Yes
Finished: Yes
Enclosed: Yes
Contiguous: Yes
Permitted: Yes
Wet space: Yes
Addition: No
Conversion: No