

Home data report

14 Penfound Dr, Bowmanville, ON, CA

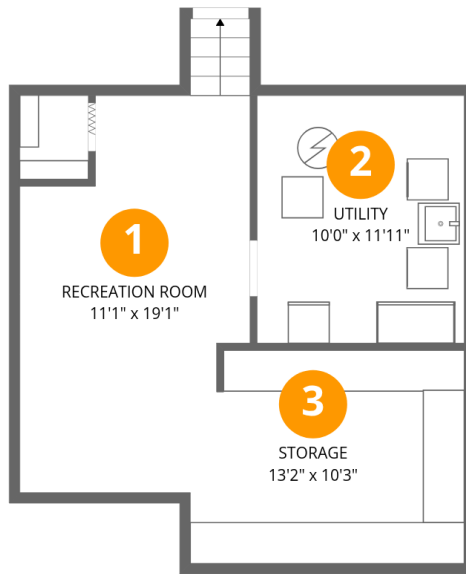


Total Area: 1652 sq. ft

Basement 2: 214 sq. ft, Basement 1: 488 sq. ft, 1st Floor: 477 sq. ft, 2nd Floor: 473 sq. ft
Excluded: Utility 122 sq. ft, Storage 128 sq. ft, Garage 353 sq. ft, Carport 354 sq. ft, Porch 95 sq. ft, Walls: 225 sq. ft

Property summary





Room dimensions

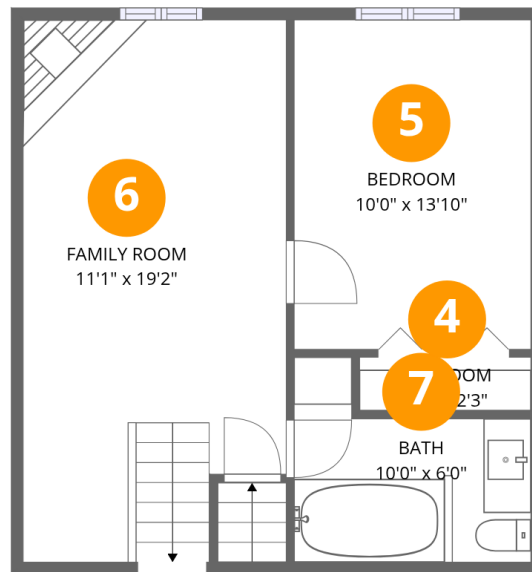
Floor 1 Below grade

Total: 214 sqft

Excluded: 250 sqft

#		Dimensions	sqft	Counted as living area
1	Recreation Room	11'1" x 19'1"	192 sq. ft	Yes
2	Utility	10'0" x 11'11"	119 sq. ft	No
3	Storage	13'2" x 10'3"	128 sq. ft	No

14 Penfound Dr, Bowmanville, ON, CA



Room dimensions

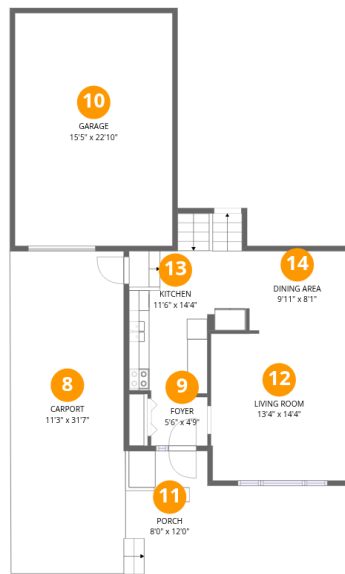
Floor 2 Below grade

Total: 488sqft

Excluded: 0sqft

#		Dimensions	sqft	Counted as living area
4	Bedroom	7'3" x 2'3"	16 sq. ft	Yes
5	Bedroom	10'0" x 13'10"	138 sq. ft	Yes
6	Family Room	11'1" x 19'2"	241 sq. ft	Yes
7	Bath	10'0" x 6'0"	60 sq. ft	Yes

14 Penfound Dr, Bowmanville, ON, CA



Room dimensions

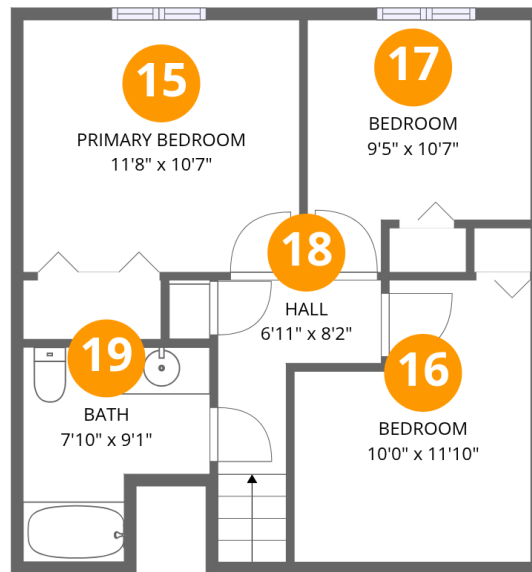
Floor 3

Total: 477 sqft

Excluded: 802 sqft

#		Dimensions	sqft	Counted as living area
8	Carport	11'3" x 31'7"	354 sq. ft	No
9	Foyer	5'6" x 4'9"	26 sq. ft	Yes
10	Garage	15'5" x 22'10"	353 sq. ft	No
11	Porch	8'0" x 12'0"	95 sq. ft	No
12	Living Room	13'4" x 14'4"	192 sq. ft	Yes
13	Kitchen	11'6" x 14'4"	161 sq. ft	Yes
14	Dining Area	9'11" x 8'1"	79 sq. ft	Yes

14 Penfound Dr, Bowmanville, ON, CA



Room dimensions

Floor 4

Total: 473 sqft

Excluded: 0 sqft

#		Dimensions	sqft	Counted as living area
15	Primary Bedroom	11'8" x 10'7"	124 sq. ft	Yes
16	Bedroom	10'0" x 11'10"	103 sq. ft	Yes
17	Bedroom	9'5" x 10'7"	86 sq. ft	Yes
18	Hall	6'11" x 8'2"	48 sq. ft	Yes
19	Bath	7'10" x 9'1"	58 sq. ft	Yes

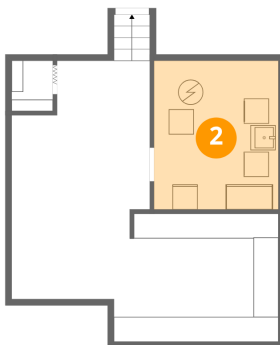
1 Floor 1 - Recreation Room



Dimensions: 11'1" x 19'1"
Area: 192 sq. ft
Counted as living area: Yes

Heated: Yes
Finished: Yes
Enclosed: Yes
Contiguous: Yes
Permitted: Yes
Wet space: No
Addition: No
Conversion: No

2 Floor 1 - Utility



Dimensions: 10'0" x 11'11"
Area: 119 sq. ft
Counted as living area: No

Heated: Yes
Finished: No
Enclosed: Yes
Contiguous: Yes
Permitted: Yes
Wet space: No
Addition: No
Conversion: No

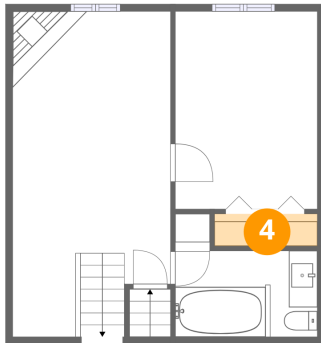
3 Floor 1 - Storage



Dimensions: 13'2" x 10'3"
Area: 128 sq. ft
Counted as living area: No

Heated: No
Finished: No
Enclosed: No
Contiguous: Yes
Permitted: Yes
Wet space: No
Addition: No
Conversion: No

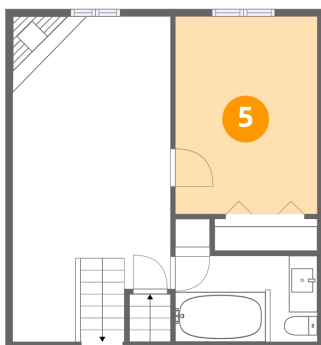
4 Floor 2 - Bedroom



Dimensions: 7'3" x 2'3"
Area: 16 sq. ft
Counted as living area: Yes

Heated: Yes
Finished: Yes
Enclosed: Yes
Contiguous: Yes
Permitted: Yes
Wet space: No
Addition: No
Conversion: No

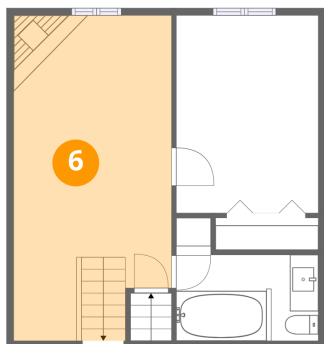
5 Floor 2 - Bedroom



Dimensions: 10'0" x 13'10"
Area: 138 sq. ft
Counted as living area: Yes

Heated: Yes
Finished: Yes
Enclosed: Yes
Contiguous: Yes
Permitted: Yes
Wet space: No
Addition: No
Conversion: No

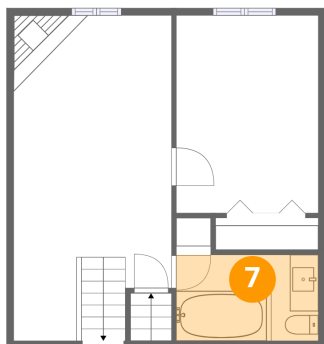
6 Floor 2 - Family Room



Dimensions: 11'1" x 19'2"
Area: 241 sq. ft
Counted as living area: Yes

Heated: Yes
Finished: Yes
Enclosed: Yes
Contiguous: Yes
Permitted: Yes
Wet space: No
Addition: No
Conversion: No

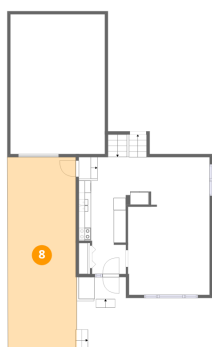
7 Floor 2 - Bath



Dimensions: 10'0" x 6'0"
Area: 60 sq. ft
Counted as living area: Yes

Heated: Yes
Finished: Yes
Enclosed: Yes
Contiguous: Yes
Permitted: Yes
Wet space: Yes
Addition: No
Conversion: No

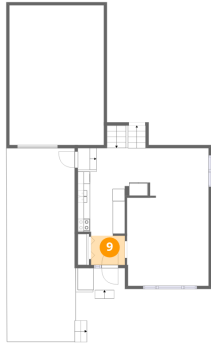
8 Floor 3 - Carport



Dimensions: 11'3" x 31'7"
Area: 354 sq. ft
Counted as living area: No

Heated: No
Finished: Yes
Enclosed: No
Contiguous: Yes
Permitted: Yes
Wet space: No
Addition: No
Conversion: No

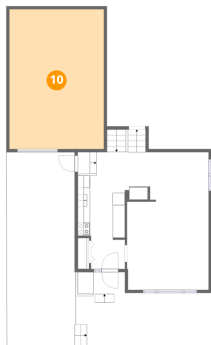
9 Floor 3 - Foyer



Dimensions: 5'6" x 4'9"
Area: 26 sq. ft
Counted as living area: Yes

Heated: Yes
Finished: Yes
Enclosed: Yes
Contiguous: Yes
Permitted: Yes
Wet space: No
Addition: No
Conversion: No

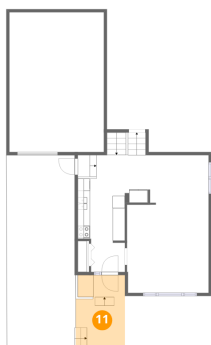
10 Floor 3 - Garage



Dimensions: 15'5" x 22'10"
Area: 353 sq. ft
Counted as living area: No

Heated: No
Finished: No
Enclosed: Yes
Contiguous: Yes
Permitted: Yes
Wet space: No
Addition: No
Conversion: No

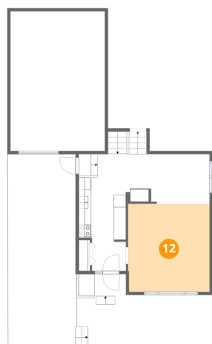
11 Floor 3 - Porch



Dimensions: 8'0" x 12'0"
Area: 95 sq. ft
Counted as living area: No

Heated: No
Finished: No
Enclosed: No
Contiguous: Yes
Permitted: Yes
Wet space: No
Addition: No
Conversion: No

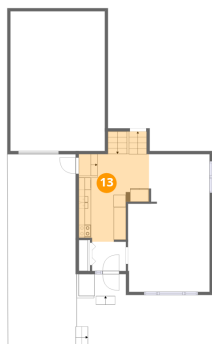
12 Floor 3 - Living Room



Dimensions: 13'4" x 14'4"
Area: 192 sq. ft
Counted as living area: Yes

Heated: Yes
Finished: Yes
Enclosed: Yes
Contiguous: Yes
Permitted: Yes
Wet space: No
Addition: No
Conversion: No

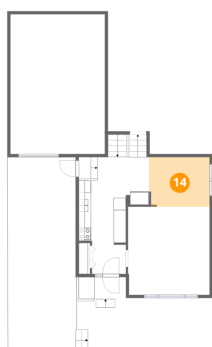
13 Floor 3 - Kitchen



Dimensions: 11'6" x 14'4"
Area: 161 sq. ft
Counted as living area: Yes

Heated: Yes
Finished: Yes
Enclosed: Yes
Contiguous: Yes
Permitted: Yes
Wet space: No
Addition: No
Conversion: No

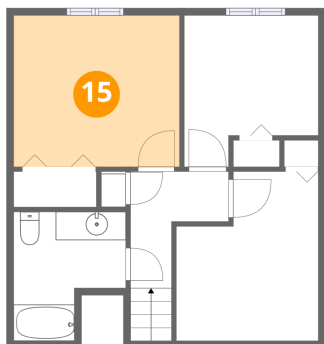
14 Floor 3 - Dining Area



Dimensions: 9'11" x 8'1"
Area: 79 sq. ft
Counted as living area: Yes

Heated: Yes
Finished: Yes
Enclosed: Yes
Contiguous: Yes
Permitted: Yes
Wet space: No
Addition: No
Conversion: No

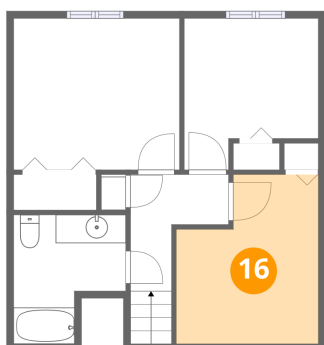
15 Floor 4 - Primary Bedroom



Dimensions: 11'8" x 10'7"
Area: 124 sq. ft
Counted as living area: Yes

Heated: Yes
Finished: Yes
Enclosed: Yes
Contiguous: Yes
Permitted: Yes
Wet space: No
Addition: No
Conversion: No

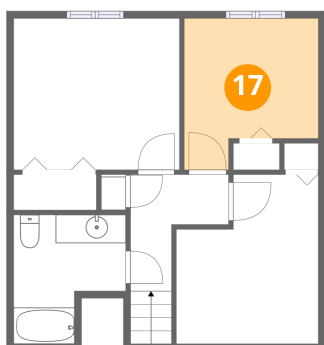
16 Floor 4 - Bedroom



Dimensions: 10'0" x 11'10"
Area: 103 sq. ft
Counted as living area: Yes

Heated: Yes
Finished: Yes
Enclosed: Yes
Contiguous: Yes
Permitted: Yes
Wet space: No
Addition: No
Conversion: No

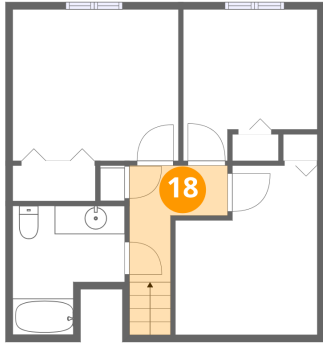
17 Floor 4 - Bedroom



Dimensions: 9'5" x 10'7"
Area: 86 sq. ft
Counted as living area: Yes

Heated: Yes
Finished: Yes
Enclosed: Yes
Contiguous: Yes
Permitted: Yes
Wet space: No
Addition: No
Conversion: No

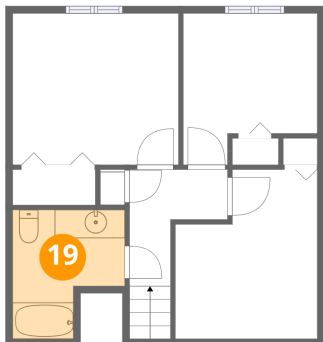
18 Floor 4 - Hall



Dimensions: 6'11" x 8'2"
Area: 48 sq. ft
Counted as living area: Yes

Heated: Yes
Finished: Yes
Enclosed: Yes
Contiguous: Yes
Permitted: Yes
Wet space: No
Addition: No
Conversion: No

19 Floor 4 - Bath



Dimensions: 7'10" x 9'1"
Area: 58 sq. ft
Counted as living area: Yes

Heated: Yes
Finished: Yes
Enclosed: Yes
Contiguous: Yes
Permitted: Yes
Wet space: Yes
Addition: No
Conversion: No