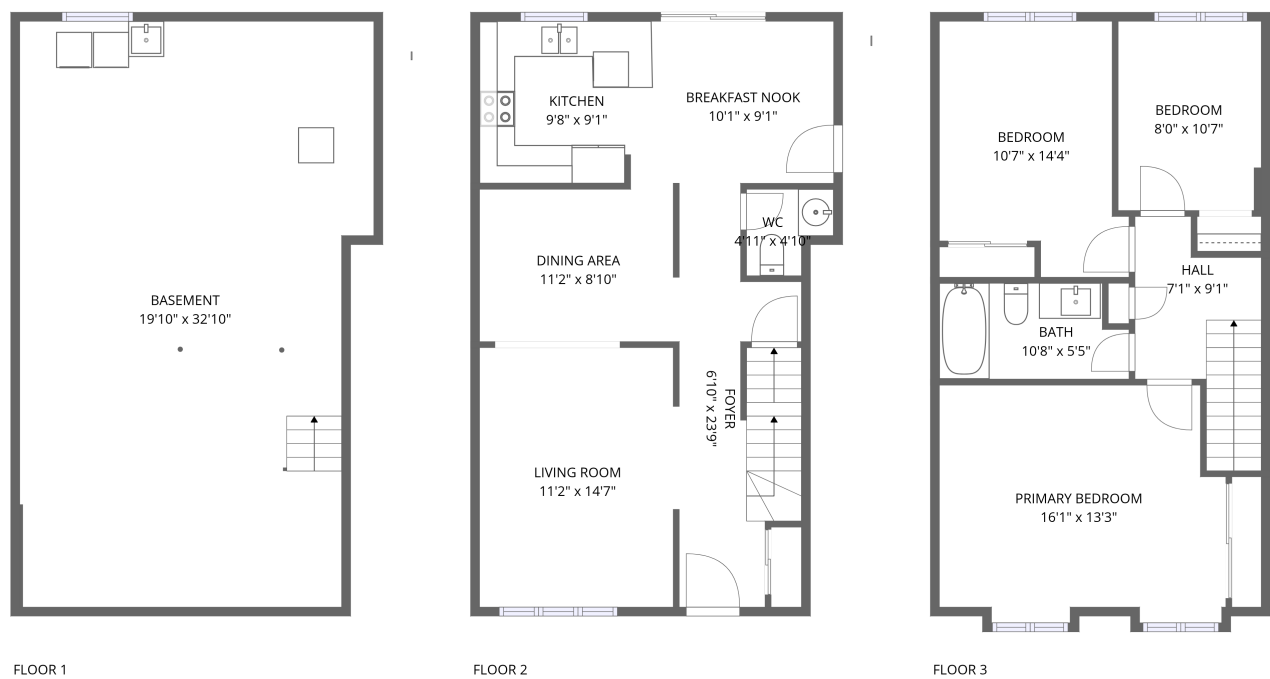


Home report

306 Elderberry Terrace,Orléans,Ontario,Canada



Total Area: 1216 sq. ft

Below Ground: 0 sq. ft, Floor 2: 614 sq. ft, Floor 3: 602 sq. ft

Excluded: Basement 614 sq. ft, Walls: 122 sq. ft

Property summary

 **3** Floors

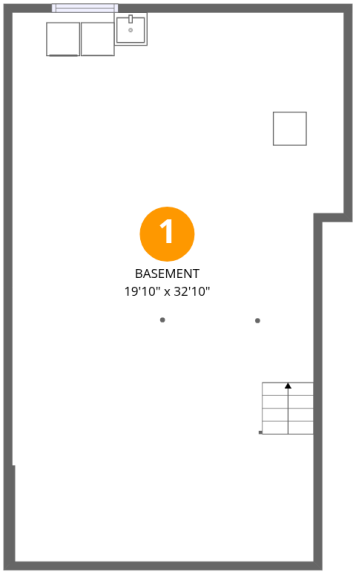
 **3** Bedrooms

 **1** Bathrooms

 **1** Half baths

Home report

306 Elderberry Terrace,Orléans,Ontario,Canada



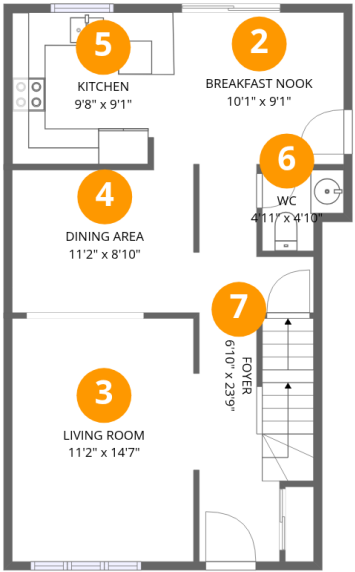
Room dimensions

Floor 1 Below ground Total:0sqft Excluded: 614sqft

#		Max Dimensions	sqft	Included
1	Basement	19'10" x 32'10"	614 sq. ft	No

Home report

306 Elderberry Terrace,Orléans,Ontario,Canada



Room dimensions

Floor 2

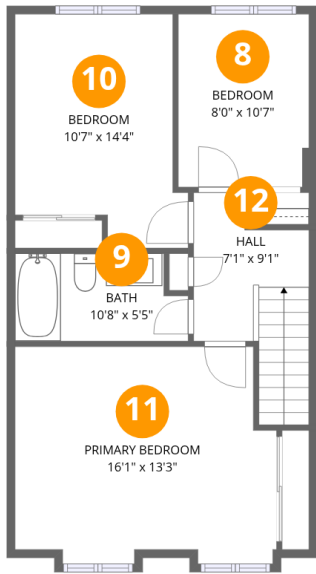
Total:614sqft

Excluded: 0sqft

#		Max Dimensions	sqft	Included
2	Breakfast Nook	10'1" x 9'1"	92 sq. ft	Yes
3	Living Room	11'2" x 14'7"	160 sq. ft	Yes
4	Dining Area	11'2" x 8'10"	95 sq. ft	Yes
5	Kitchen	9'8" x 9'1"	87 sq. ft	Yes
6	WC	4'11" x 4'10"	20 sq. ft	Yes
7	Foyer	6'10" x 23'9"	132 sq. ft	Yes

Home report

306 Elderberry Terrace,Orléans,Ontario,Canada

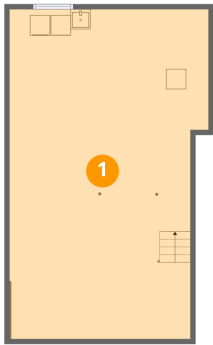


Room dimensions

Floor 3 Total:602sqft Excluded: 0sqft

#		Max Dimensions	sqft	Included
8	Bedroom	8'0" x 10'7"	85 sq. ft	Yes
9	Bath	10'8" x 5'5"	53 sq. ft	Yes
10	Bedroom	10'7" x 14'4"	131 sq. ft	Yes
11	Primary Bedroom	16'1" x 13'3"	200 sq. ft	Yes
12	Hall	7'1" x 9'1"	71 sq. ft	Yes

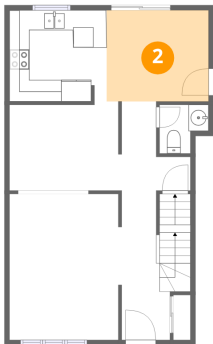
1 Floor 1 - Basement



Max Dimensions: 19'10" x 32'10"
Calculated Area: 614 sq. ft
Included: No

Heated: Yes
Finished: No
Enclosed: Yes
Contiguous: Yes
Permitted: Yes
Wet space: No
Addition: No
Conversion: No

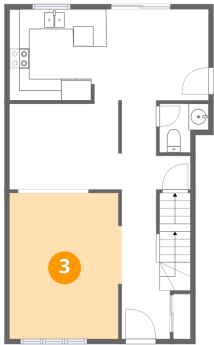
2 Floor 2 - Breakfast Nook



Max Dimensions: 10'1" x 9'1"
Calculated Area: 92 sq. ft
Included: Yes

Heated: Yes
Finished: Yes
Enclosed: Yes
Contiguous: Yes
Permitted: Yes
Wet space: No
Addition: No
Conversion: No

3 Floor 2 - Living Room



Max Dimensions: 11'2" x 14'7"
Calculated Area: 160 sq. ft
Included: Yes

Heated: Yes
Finished: Yes
Enclosed: Yes
Contiguous: Yes
Permitted: Yes
Wet space: No
Addition: No
Conversion: No

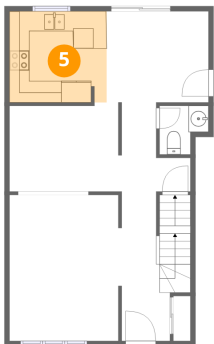
4 Floor 2 - Dining Area



Max Dimensions: 11'2" x 8'10"
Calculated Area: 95 sq. ft
Included: Yes

Heated: Yes
Finished: Yes
Enclosed: Yes
Contiguous: Yes
Permitted: Yes
Wet space: No
Addition: No
Conversion: No

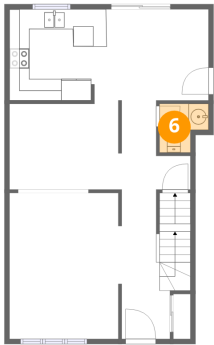
5 Floor 2 - Kitchen



Max Dimensions: 9'8" x 9'1"
Calculated Area: 87 sq. ft
Included: Yes

Heated: Yes
Finished: Yes
Enclosed: Yes
Contiguous: Yes
Permitted: Yes
Wet space: No
Addition: No
Conversion: No

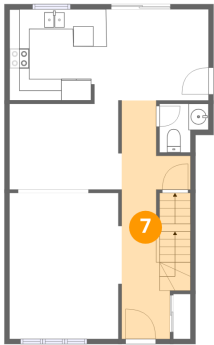
6 Floor 2 - WC



Max Dimensions: 4'11" x 4'10"
Calculated Area: 20 sq. ft
Included: Yes

Heated: Yes
Finished: Yes
Enclosed: Yes
Contiguous: Yes
Permitted: Yes
Wet space: Yes
Addition: No
Conversion: No

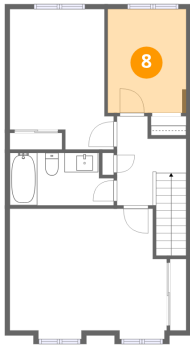
7 Floor 2 - Foyer



Max Dimensions: 6'10" x 23'9"
Calculated Area: 132 sq. ft
Included: Yes

Heated: Yes
Finished: Yes
Enclosed: Yes
Contiguous: Yes
Permitted: Yes
Wet space: No
Addition: No
Conversion: No

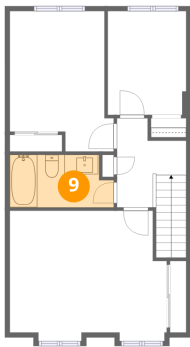
8 Floor 3 - Bedroom



Max Dimensions: 8'0" x 10'7"
Calculated Area: 85 sq. ft
Included: Yes

Heated: Yes
Finished: Yes
Enclosed: Yes
Contiguous: Yes
Permitted: Yes
Wet space: No
Addition: No
Conversion: No

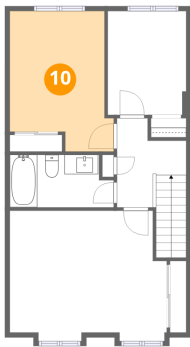
9 Floor 3 - Bath



Max Dimensions: 10'8" x 5'5"
Calculated Area: 53 sq. ft
Included: Yes

Heated: Yes
Finished: Yes
Enclosed: Yes
Contiguous: Yes
Permitted: Yes
Wet space: Yes
Addition: No
Conversion: No

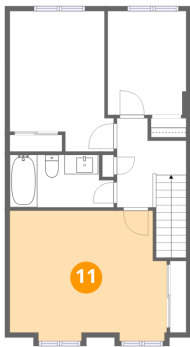
10 Floor 3 - Bedroom



Max Dimensions: 10'7" x 14'4"
Calculated Area: 131 sq. ft
Included: Yes

Heated: Yes
Finished: Yes
Enclosed: Yes
Contiguous: Yes
Permitted: Yes
Wet space: No
Addition: No
Conversion: No

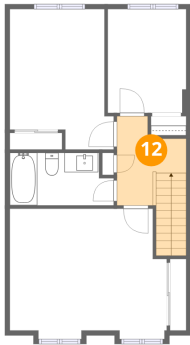
11 Floor 3 - Primary Bedroom



Max Dimensions: 16'1" x 13'3"
Calculated Area: 200 sq. ft
Included: Yes

Heated: Yes
Finished: Yes
Enclosed: Yes
Contiguous: Yes
Permitted: Yes
Wet space: No
Addition: No
Conversion: No

12 Floor 3 - Hall



Max Dimensions: 7'1" x 9'1"
Calculated Area: 71 sq. ft
Included: Yes

Heated: Yes
Finished: Yes
Enclosed: Yes
Contiguous: Yes
Permitted: Yes
Wet space: No
Addition: No
Conversion: No