



**Total Area: 1450 sq. ft**

Basement: 0 sq. ft, 1st Floor: 1450 sq. ft

Excluded: Basement 1397 sq. ft, Garage 434 sq. ft, Walls: 226 sq. ft

### Property summary

 **2** Floors

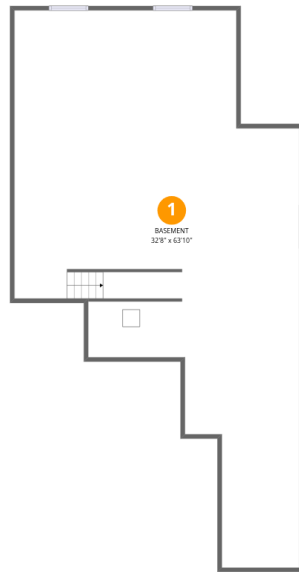
 **3** Bedrooms

 **2** Bathrooms

 **1** Garages

Home data report

113 Jacobs Wy, Brighton, CO, US



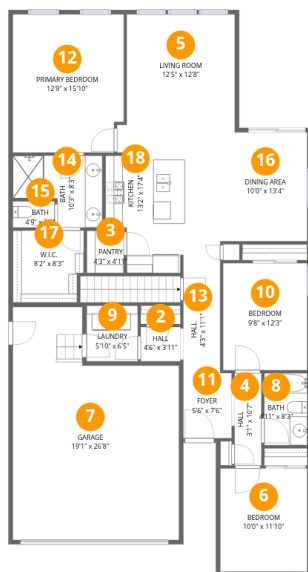
## Room dimensions

Floor 1 Below grade

Total: 0sqft

Excluded: 1397sqft

#		Dimensions	sqft	Counted as living area
1	Basement	32'8" x 63'10"	2089 sq. ft	No



## Room dimensions

Floor 2

Total: 1450sqft Excluded: 434sqft

#		Dimensions	sqft	Counted as living area
2	Hall	4'6" x 3'11"	18 sq. ft	Yes
3	Pantry	4'3" x 4'11"	21 sq. ft	Yes
4	Hall	3'1" x 10'7"	33 sq. ft	Yes
5	Living Room	12'5" x 12'8"	157 sq. ft	Yes
6	Bedroom	10'0" x 11'10"	118 sq. ft	Yes
7	Garage	19'1" x 26'8"	508 sq. ft	No
8	Bath	4'11" x 8'3"	41 sq. ft	Yes
9	Laundry	5'10" x 6'5"	38 sq. ft	Yes
10	Bedroom	9'8" x 12'3"	118 sq. ft	Yes
11	Foyer	5'6" x 7'6"	41 sq. ft	Yes
12	Primary Bedroom	12'9" x 15'10"	202 sq. ft	Yes

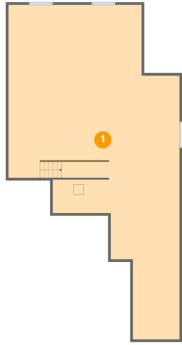
Home data report

**113 Jacobs Wy,Brighton,CO,US**

#		Dimensions	sqft	Counted as living area
13	Hall	4'3" x 11'1"	47 sq. ft	Yes
14	Bath	10'3" x 8'3"	84 sq. ft	Yes
15	Bath	4'9" x 3'0"	14 sq. ft	Yes
16	Dining Area	10'0" x 13'4"	133 sq. ft	Yes
17	W.I.C.	8'2" x 8'3"	67 sq. ft	Yes
18	Kitchen	13'2" x 17'4"	228 sq. ft	Yes

## 1 Floor 1 - Basement

---

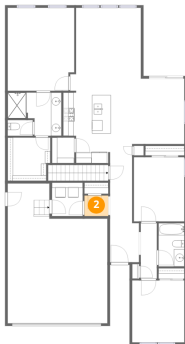


Dimensions: 32'8" x 63'10"  
Area: 2089 sq. ft  
Counted as living area: No

Heated: Yes  
Finished: No  
Enclosed: Yes  
Contiguous: Yes  
Permitted: Yes  
Wet space: No  
Addition: No  
Conversion: No

## 2 Floor 2 - Hall

---



Dimensions: 4'6" x 3'11"  
Area: 18 sq. ft  
Counted as living area: Yes

Heated: Yes  
Finished: Yes  
Enclosed: Yes  
Contiguous: Yes  
Permitted: Yes  
Wet space: No  
Addition: No  
Conversion: No

### 3 Floor 2 - Pantry



Dimensions: 4'3" x 4'11"  
Area: 21 sq. ft  
Counted as living area: Yes

Heated: Yes  
Finished: Yes  
Enclosed: Yes  
Contiguous: Yes  
Permitted: Yes  
Wet space: No  
Addition: No  
Conversion: No

### 4 Floor 2 - Hall



Dimensions: 3'1" x 10'7"  
Area: 33 sq. ft  
Counted as living area: Yes

Heated: Yes  
Finished: Yes  
Enclosed: Yes  
Contiguous: Yes  
Permitted: Yes  
Wet space: No  
Addition: No  
Conversion: No

### 5 Floor 2 - Living Room



Dimensions: 12'5" x 12'8"  
Area: 157 sq. ft  
Counted as living area: Yes

Heated: Yes  
Finished: Yes  
Enclosed: Yes  
Contiguous: Yes  
Permitted: Yes  
Wet space: No  
Addition: No  
Conversion: No

## 6 Floor 2 - Bedroom



Dimensions: 10'0" x 11'10"  
Area: 118 sq. ft  
Counted as living area: Yes

Heated: Yes  
Finished: Yes  
Enclosed: Yes  
Contiguous: Yes  
Permitted: Yes  
Wet space: No  
Addition: No  
Conversion: No

## 7 Floor 2 - Garage



Dimensions: 19'1" x 26'8"  
Area: 508 sq. ft  
Counted as living area: No

Heated: No  
Finished: No  
Enclosed: Yes  
Contiguous: Yes  
Permitted: Yes  
Wet space: No  
Addition: No  
Conversion: No

## 8 Floor 2 - Bath



Dimensions: 4'11" x 8'3"  
Area: 41 sq. ft  
Counted as living area: Yes

Heated: Yes  
Finished: Yes  
Enclosed: Yes  
Contiguous: Yes  
Permitted: Yes  
Wet space: Yes  
Addition: No  
Conversion: No

### 9 Floor 2 - Laundry



Dimensions: 5'10" x 6'5"  
Area: 38 sq. ft  
Counted as living area: Yes

Heated: Yes  
Finished: Yes  
Enclosed: Yes  
Contiguous: Yes  
Permitted: Yes  
Wet space: No  
Addition: No  
Conversion: No

### 10 Floor 2 - Bedroom



Dimensions: 9'8" x 12'3"  
Area: 118 sq. ft  
Counted as living area: Yes

Heated: Yes  
Finished: Yes  
Enclosed: Yes  
Contiguous: Yes  
Permitted: Yes  
Wet space: No  
Addition: No  
Conversion: No

### 11 Floor 2 - Foyer



Dimensions: 5'6" x 7'6"  
Area: 41 sq. ft  
Counted as living area: Yes

Heated: Yes  
Finished: Yes  
Enclosed: Yes  
Contiguous: Yes  
Permitted: Yes  
Wet space: No  
Addition: No  
Conversion: No

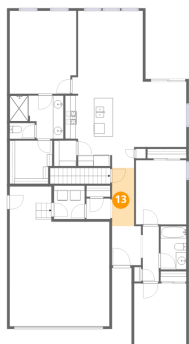
## 12 Floor 2 - Primary Bedroom



Dimensions: 12'9" x 15'10"  
Area: 202 sq. ft  
Counted as living area: Yes

Heated: Yes  
Finished: Yes  
Enclosed: Yes  
Contiguous: Yes  
Permitted: Yes  
Wet space: No  
Addition: No  
Conversion: No

## 13 Floor 2 - Hall



Dimensions: 4'3" x 11'1"  
Area: 47 sq. ft  
Counted as living area: Yes

Heated: Yes  
Finished: Yes  
Enclosed: Yes  
Contiguous: Yes  
Permitted: Yes  
Wet space: No  
Addition: No  
Conversion: No

## 14 Floor 2 - Bath



Dimensions: 10'3" x 8'3"  
Area: 84 sq. ft  
Counted as living area: Yes

Heated: Yes  
Finished: Yes  
Enclosed: Yes  
Contiguous: Yes  
Permitted: Yes  
Wet space: Yes  
Addition: No  
Conversion: No

### 15 Floor 2 - Bath



Dimensions: 4'9" x 3'0"  
Area: 14 sq. ft  
Counted as living area: Yes

Heated: Yes  
Finished: Yes  
Enclosed: Yes  
Contiguous: Yes  
Permitted: Yes  
Wet space: Yes  
Addition: No  
Conversion: No

### 16 Floor 2 - Dining Area



Dimensions: 10'0" x 13'4"  
Area: 133 sq. ft  
Counted as living area: Yes

Heated: Yes  
Finished: Yes  
Enclosed: Yes  
Contiguous: Yes  
Permitted: Yes  
Wet space: No  
Addition: No  
Conversion: No

### 17 Floor 2 - W.I.C.

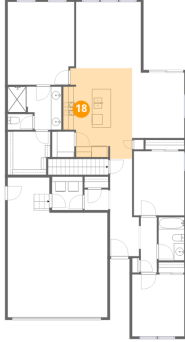


Dimensions: 8'2" x 8'3"  
Area: 67 sq. ft  
Counted as living area: Yes

Heated: Yes  
Finished: Yes  
Enclosed: Yes  
Contiguous: Yes  
Permitted: Yes  
Wet space: No  
Addition: No  
Conversion: No

**18** Floor 2 - Kitchen

---



**Dimensions:** 13'2" x 17'4"  
**Area:** 228 sq. ft  
**Counted as living area:** Yes

**Heated:** Yes  
**Finished:** Yes  
**Enclosed:** Yes  
**Contiguous:** Yes  
**Permitted:** Yes  
**Wet space:** No  
**Addition:** No  
**Conversion:** No