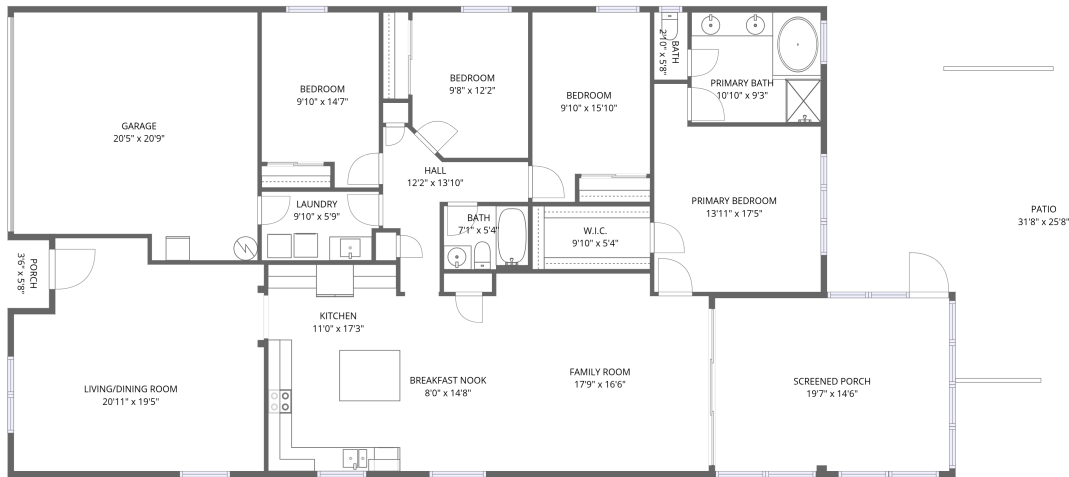


## Home data report

**13744 Trull Way, Hudson, Pasco County, Florida, United States, 34669**



1st floor

**Total Area: 2013 sq. ft**

1st Floor: 2013 sq. ft

Excluded: Screened porch 284 sq. ft, Porch 20 sq. ft, Patio 582 sq. ft, Garage 397 sq. ft, Walls: 146 sq. ft

## Property summary



**1** Floors



**4** Bedrooms



**2** Bathrooms



**1** Garages

# Home data report

13744 Trull Way, Hudson, Pasco County, Florida, United States, 34669



## Room dimensions

Floor 1

Total:2013sqft

Excluded: 1283sqft

#		Dimensions	sqft	Counted as living area
1	Bedroom	9'10" x 15'10"	155 sq. ft	Yes
2	Bath	7'1" x 5'4"	37 sq. ft	Yes
3	W.I.C.	9'10" x 5'4"	52 sq. ft	Yes
4	Bedroom	9'8" x 12'2"	118 sq. ft	Yes
5	Patio	31'8" x 25'8"	814 sq. ft	No
6	Bedroom	9'10" x 14'7"	143 sq. ft	Yes
7	LIVING/DINING Room	20'11" x 19'5"	407 sq. ft	Yes
8	Breakfast Nook	8'0" x 14'8"	118 sq. ft	Yes
9	Laundry	9'10" x 5'9"	56 sq. ft	Yes
10	Bath	2'10" x 5'8"	16 sq. ft	Yes
11	Kitchen	11'0" x 17'3"	189 sq. ft	Yes

Home data report

**13744 Trull Way, Hudson, Pasco County, Florida, United States, 34669**

#		Dimensions	sqft	Counted as living area
12	Primary Bedroom	13'11" x 17'5"	243 sq. ft	Yes
13	Primary Bath	10'10" x 9'3"	100 sq. ft	Yes
14	Porch	3'6" x 5'8"	20 sq. ft	No
15	Hall	12'2" x 13'10"	168 sq. ft	Yes
16	Screened Porch	19'7" x 14'6"	284 sq. ft	No
17	Family Room	17'9" x 16'6"	293 sq. ft	Yes
18	Garage	20'5" x 20'9"	422 sq. ft	No

13744 Trull Way, Hudson, Pasco County, Florida, United States, 34669

## 1 Floor 1 - Bedroom

---



Dimensions: 9'10" x 15'10"  
Area: 155 sq. ft  
Counted as living area: Yes

Heated: Yes  
Finished: Yes  
Enclosed: Yes  
Contiguous: Yes  
Permitted: Yes  
Wet space: No  
Addition: No  
Conversion: No

## 2 Floor 1 - Bath

---



Dimensions: 7'1" x 5'4"  
Area: 37 sq. ft  
Counted as living area: Yes

Heated: Yes  
Finished: Yes  
Enclosed: Yes  
Contiguous: Yes  
Permitted: Yes  
Wet space: Yes  
Addition: No  
Conversion: No

### 3 Floor 1 - W.I.C.



Dimensions: 9'10" x 5'4"  
Area: 52 sq. ft  
Counted as living area: Yes

Heated: Yes  
Finished: Yes  
Enclosed: Yes  
Contiguous: Yes  
Permitted: Yes  
Wet space: No  
Addition: No  
Conversion: No

### 4 Floor 1 - Bedroom



Dimensions: 9'8" x 12'2"  
Area: 118 sq. ft  
Counted as living area: Yes

Heated: Yes  
Finished: Yes  
Enclosed: Yes  
Contiguous: Yes  
Permitted: Yes  
Wet space: No  
Addition: No  
Conversion: No

### 5 Floor 1 - Patio

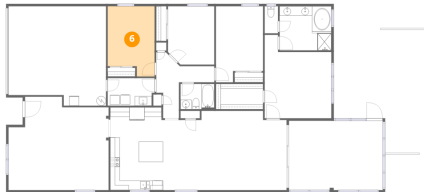


Dimensions: 31'8" x 25'8"  
Area: 814 sq. ft  
Counted as living area: No

Heated: No  
Finished: No  
Enclosed: No  
Contiguous: Yes  
Permitted: Yes  
Wet space: No  
Addition: No  
Conversion: No

13744 Trull Way, Hudson, Pasco County, Florida, United States, 34669

## 6 Floor 1 - Bedroom



Dimensions: 9'10" x 14'7"  
Area: 143 sq. ft  
Counted as living area: Yes

Heated: Yes  
Finished: Yes  
Enclosed: Yes  
Contiguous: Yes  
Permitted: Yes  
Wet space: No  
Addition: No  
Conversion: No

## 7 Floor 1 - LIVING/DINING Room



Dimensions: 20'11" x 19'5"  
Area: 407 sq. ft  
Counted as living area: Yes

Heated: Yes  
Finished: Yes  
Enclosed: Yes  
Contiguous: Yes  
Permitted: Yes  
Wet space: No  
Addition: No  
Conversion: No

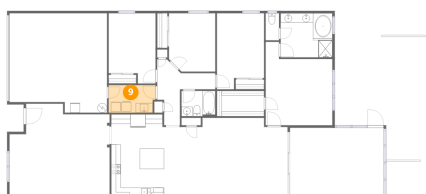
## 8 Floor 1 - Breakfast Nook



Dimensions: 8'0" x 14'8"  
Area: 118 sq. ft  
Counted as living area: Yes

Heated: Yes  
Finished: Yes  
Enclosed: Yes  
Contiguous: Yes  
Permitted: Yes  
Wet space: No  
Addition: No  
Conversion: No

### 9 Floor 1 - Laundry



Dimensions: 9'10" x 5'9"  
Area: 56 sq. ft  
Counted as living area: Yes

Heated: Yes  
Finished: Yes  
Enclosed: Yes  
Contiguous: Yes  
Permitted: Yes  
Wet space: No  
Addition: No  
Conversion: No

### 10 Floor 1 - Bath



Dimensions: 2'10" x 5'8"  
Area: 16 sq. ft  
Counted as living area: Yes

Heated: Yes  
Finished: Yes  
Enclosed: Yes  
Contiguous: Yes  
Permitted: Yes  
Wet space: Yes  
Addition: No  
Conversion: No

### 11 Floor 1 - Kitchen



Dimensions: 11'0" x 17'3"  
Area: 189 sq. ft  
Counted as living area: Yes

Heated: Yes  
Finished: Yes  
Enclosed: Yes  
Contiguous: Yes  
Permitted: Yes  
Wet space: No  
Addition: No  
Conversion: No

13744 Trull Way, Hudson, Pasco County, Florida, United States, 34669

### 12 Floor 1 - Primary Bedroom



Dimensions: 13'11" x 17'5"  
Area: 243 sq. ft  
Counted as living area: Yes

Heated: Yes  
Finished: Yes  
Enclosed: Yes  
Contiguous: Yes  
Permitted: Yes  
Wet space: No  
Addition: No  
Conversion: No

### 13 Floor 1 - Primary Bath



Dimensions: 10'10" x 9'3"  
Area: 100 sq. ft  
Counted as living area: Yes

Heated: Yes  
Finished: Yes  
Enclosed: Yes  
Contiguous: Yes  
Permitted: Yes  
Wet space: Yes  
Addition: No  
Conversion: No

### 14 Floor 1 - Porch



Dimensions: 3'6" x 5'8"  
Area: 20 sq. ft  
Counted as living area: No

Heated: No  
Finished: No  
Enclosed: No  
Contiguous: Yes  
Permitted: Yes  
Wet space: No  
Addition: No  
Conversion: No

### 15 Floor 1 - Hall



Dimensions: 12'2" x 13'10"  
Area: 168 sq. ft  
Counted as living area: Yes

Heated: Yes  
Finished: Yes  
Enclosed: Yes  
Contiguous: Yes  
Permitted: Yes  
Wet space: No  
Addition: No  
Conversion: No

### 16 Floor 1 - Screened Porch



Dimensions: 19'7" x 14'6"  
Area: 284 sq. ft  
Counted as living area: No

Heated: No  
Finished: No  
Enclosed: No  
Contiguous: Yes  
Permitted: Yes  
Wet space: No  
Addition: No  
Conversion: No

### 17 Floor 1 - Family Room



Dimensions: 17'9" x 16'6"  
Area: 293 sq. ft  
Counted as living area: Yes

Heated: Yes  
Finished: Yes  
Enclosed: Yes  
Contiguous: Yes  
Permitted: Yes  
Wet space: No  
Addition: No  
Conversion: No

Home data report

13744 Trull Way, Hudson, Pasco County, Florida, United States,  
34669

## 18 Floor 1 - Garage



Dimensions: 20'5" x 20'9"  
Area: 422 sq. ft  
Counted as living area: No

Heated: No  
Finished: No  
Enclosed: Yes  
Contiguous: Yes  
Permitted: Yes  
Wet space: No  
Addition: No  
Conversion: No