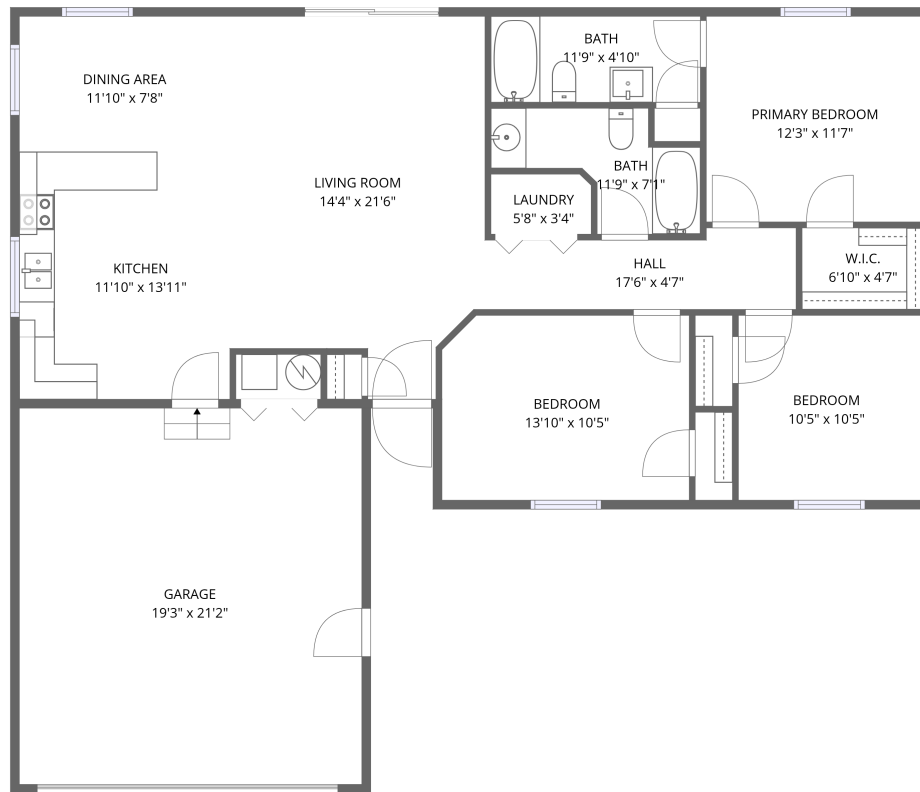


Home data report

# 1668 W Integrity St, Greensburg, IN, US



1st floor


**Total Area: 1232 sq. ft**

1st Floor: 1232 sq. ft

Excluded: Garage 407 sq. ft, Undefined 12 sq. ft, Walls: 114 sq. ft

## Property summary

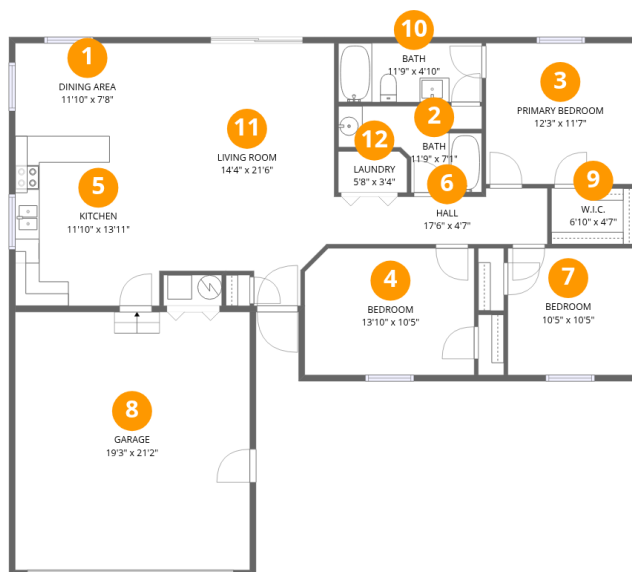
 **1** Floors

 **3** Bedrooms

 **2** Bathrooms

 **1** Garages

# 1668 W Integrity St, Greensburg, IN, US



## Room dimensions

Floor 1

Total: 1232 sqft

Excluded: 419 sqft

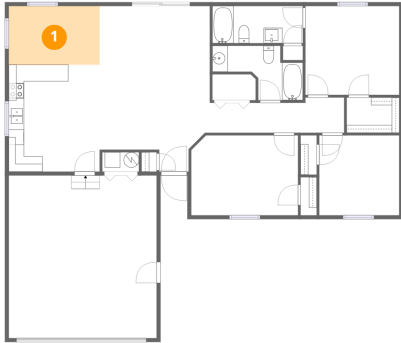
#		Dimensions	sqft	Counted as living area
1	Dining Area	11'10" x 7'8"	90 sq. ft	Yes
2	Bath	11'9" x 7'1"	83 sq. ft	Yes
3	Primary Bedroom	12'3" x 11'7"	141 sq. ft	Yes
4	Bedroom	13'10" x 10'5"	144 sq. ft	Yes
5	Kitchen	11'10" x 13'11"	165 sq. ft	Yes
6	Hall	17'6" x 4'7"	80 sq. ft	Yes
7	Bedroom	10'5" x 10'5"	108 sq. ft	Yes
8	Garage	19'3" x 21'2"	407 sq. ft	No
9	W.I.C.	6'10" x 4'7"	31 sq. ft	Yes
10	Bath	11'9" x 4'10"	57 sq. ft	Yes
11	Living Room	14'4" x 21'6"	309 sq. ft	Yes

Home data report

**1668 W Integrity St, Greensburg, IN, US**

#		Dimensions	sqft	Counted as living area
12	Laundry	5'8" x 3'4"	19 sq. ft	Yes

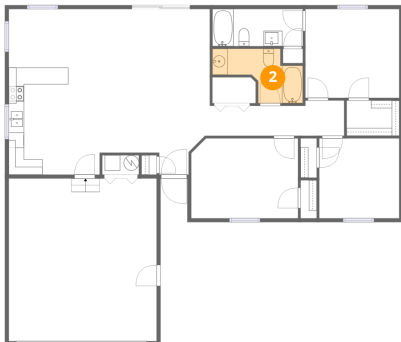
## 1 Floor 1 - Dining Area



Dimensions: 11'10" x 7'8"  
Area: 90 sq. ft  
Counted as living area: Yes

Heated: Yes  
Finished: Yes  
Enclosed: Yes  
Contiguous: Yes  
Permitted: Yes  
Wet space: No  
Addition: No  
Conversion: No

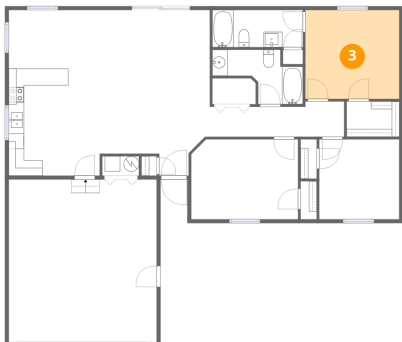
## 2 Floor 1 - Bath



Dimensions: 11'9" x 7'1"  
Area: 83 sq. ft  
Counted as living area: Yes

Heated: Yes  
Finished: Yes  
Enclosed: Yes  
Contiguous: Yes  
Permitted: Yes  
Wet space: Yes  
Addition: No  
Conversion: No

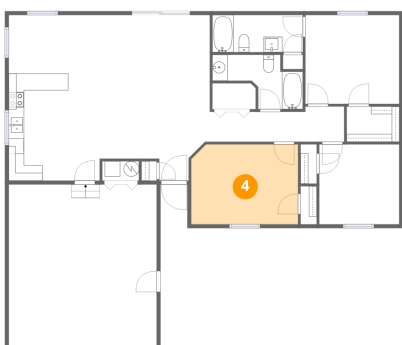
### 3 Floor 1 - Primary Bedroom



Dimensions: 12'3" x 11'7"  
Area: 141 sq. ft  
Counted as living area: Yes

Heated: Yes  
Finished: Yes  
Enclosed: Yes  
Contiguous: Yes  
Permitted: Yes  
Wet space: No  
Addition: No  
Conversion: No

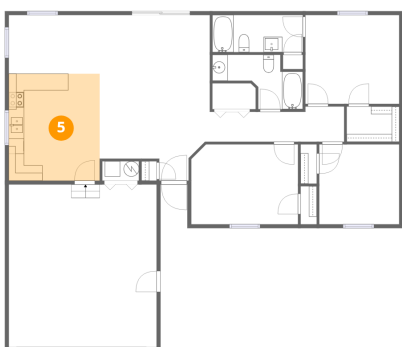
### 4 Floor 1 - Bedroom



Dimensions: 13'10" x 10'5"  
Area: 144 sq. ft  
Counted as living area: Yes

Heated: Yes  
Finished: Yes  
Enclosed: Yes  
Contiguous: Yes  
Permitted: Yes  
Wet space: No  
Addition: No  
Conversion: No

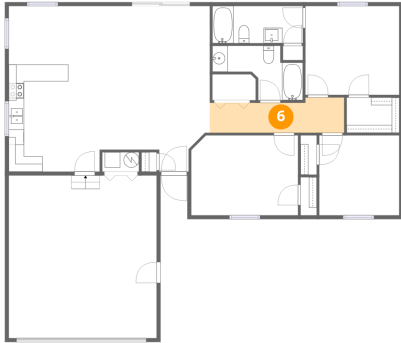
### 5 Floor 1 - Kitchen



Dimensions: 11'10" x 13'11"  
Area: 165 sq. ft  
Counted as living area: Yes

Heated: Yes  
Finished: Yes  
Enclosed: Yes  
Contiguous: Yes  
Permitted: Yes  
Wet space: No  
Addition: No  
Conversion: No

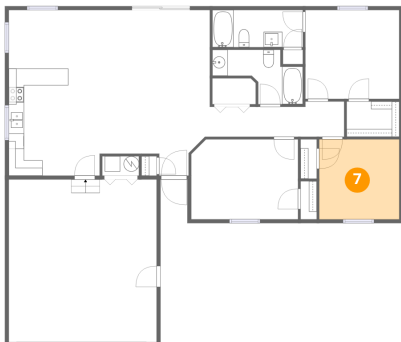
## 6 Floor 1 - Hall



Dimensions: 17'6" x 4'7"  
Area: 80 sq. ft  
Counted as living area: Yes

Heated: Yes  
Finished: Yes  
Enclosed: Yes  
Contiguous: Yes  
Permitted: Yes  
Wet space: No  
Addition: No  
Conversion: No

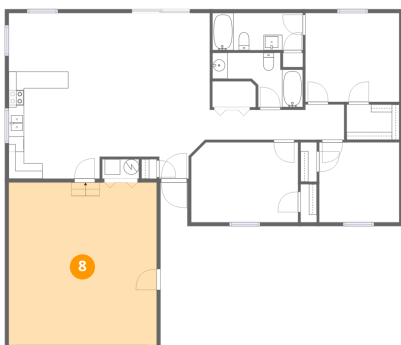
## 7 Floor 1 - Bedroom



Dimensions: 10'5" x 10'5"  
Area: 108 sq. ft  
Counted as living area: Yes

Heated: Yes  
Finished: Yes  
Enclosed: Yes  
Contiguous: Yes  
Permitted: Yes  
Wet space: No  
Addition: No  
Conversion: No

## 8 Floor 1 - Garage



Dimensions: 19'3" x 21'2"  
Area: 407 sq. ft  
Counted as living area: No

Heated: No  
Finished: No  
Enclosed: Yes  
Contiguous: Yes  
Permitted: Yes  
Wet space: No  
Addition: No  
Conversion: No

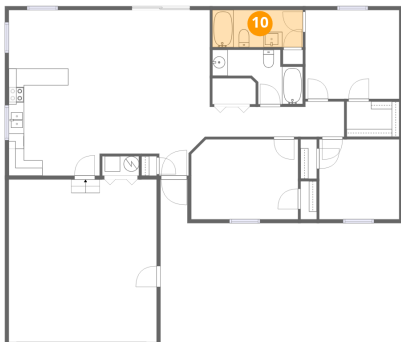
**9** Floor 1 - W.I.C.



Dimensions: 6'10" x 4'7"  
Area: 31 sq. ft  
Counted as living area: Yes

Heated: Yes  
Finished: Yes  
Enclosed: Yes  
Contiguous: Yes  
Permitted: Yes  
Wet space: No  
Addition: No  
Conversion: No

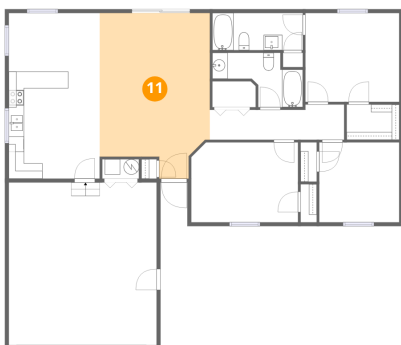
**10** Floor 1 - Bath



Dimensions: 11'9" x 4'10"  
Area: 57 sq. ft  
Counted as living area: Yes

Heated: Yes  
Finished: Yes  
Enclosed: Yes  
Contiguous: Yes  
Permitted: Yes  
Wet space: Yes  
Addition: No  
Conversion: No

**11** Floor 1 - Living Room

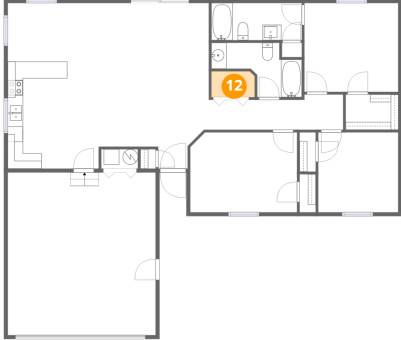


Dimensions: 14'4" x 21'6"  
Area: 309 sq. ft  
Counted as living area: Yes

Heated: Yes  
Finished: Yes  
Enclosed: Yes  
Contiguous: Yes  
Permitted: Yes  
Wet space: No  
Addition: No  
Conversion: No

**12** Floor 1 - Laundry

---



Dimensions: 5'8" x 3'4"  
Area: 19 sq. ft  
Counted as living area: Yes

Heated: Yes  
Finished: Yes  
Enclosed: Yes  
Contiguous: Yes  
Permitted: Yes  
Wet space: No  
Addition: No  
Conversion: No