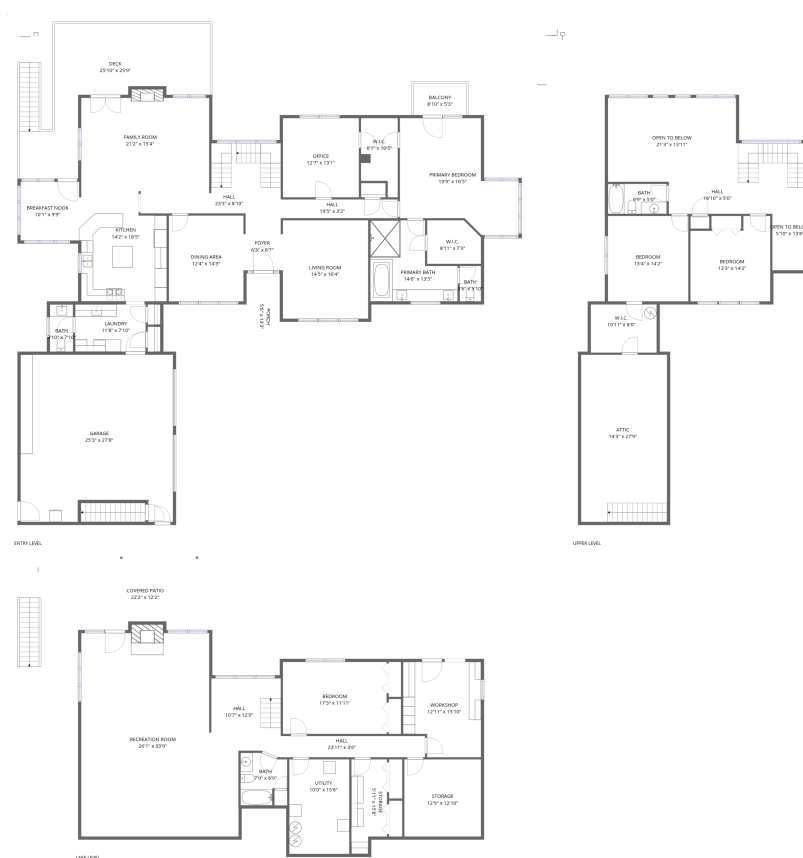


Home data report

25 Findlay Drive, Penhook, Franklin County, Virginia, United States, 24137



Total Area: 5257 sq. ft

1st Floor: 1547 sq. ft, 2nd Floor: 3008 sq. ft, 3rd Floor: 702 sq. ft

Excluded: Storage 250 sq. ft, Workshop 189 sq. ft, Covered patio 262 sq. ft, Fireplace 18 sq. ft, Porch 73 sq. ft, Deck 434 sq. ft, Balcony 46 sq. ft, Attic 396 sq. ft, Open to below 390 sq. ft, Walls: 413 sq. ft

Property summary



Home data report

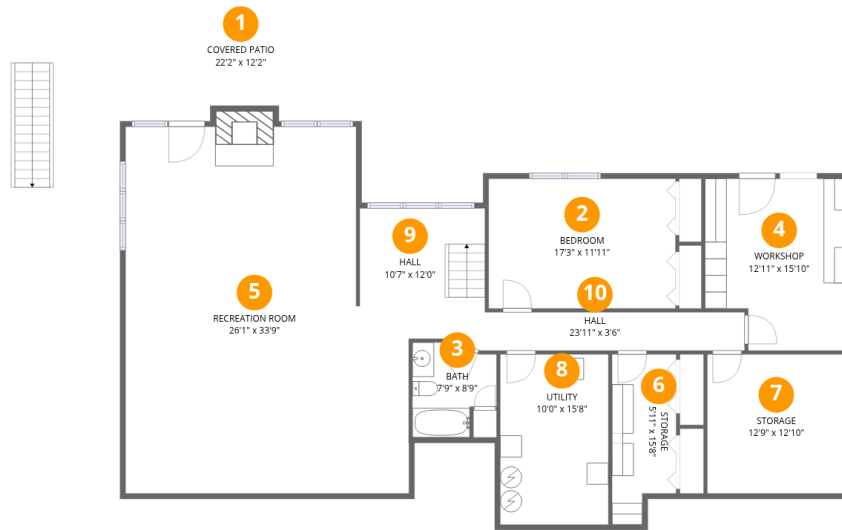
25 Findlay Drive, Penhook, Franklin County, Virginia, United States, 24137

 **1**
Half baths

 **1**
Garages

Home data report

25 Findlay Drive, Penhook, Franklin County, Virginia, United States, 24137



Room dimensions

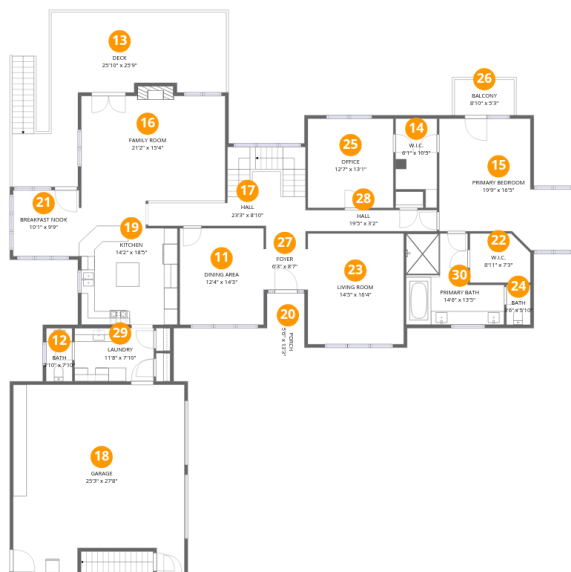
Floor 1

Total:1547sqft Excluded: 710sqft

#		Dimensions	sqft	Counted as living area
1	Covered Patio	22'2" x 12'2"	262 sq. ft	No
2	Bedroom	17'3" x 11'11"	206 sq. ft	Yes
3	Bath	7'9" x 8'9"	58 sq. ft	Yes
4	Workshop	12'11" x 15'10"	189 sq. ft	No
5	Recreation Room	26'1" x 33'9"	801 sq. ft	Yes
6	Storage	5'11" x 15'8"	84 sq. ft	No
7	Storage	12'9" x 12'10"	163 sq. ft	No
8	Utility	10'0" x 15'8"	156 sq. ft	Yes
9	Hall	10'7" x 12'0"	134 sq. ft	Yes
10	Hall	23'11" x 3'6"	85 sq. ft	Yes

Home data report

25 Findlay Drive, Penhook, Franklin County, Virginia, United States, 24137



Room dimensions

Floor 2

Total:3008sqft Excluded: 562sqft

#		Dimensions	sqft	Counted as living area
11	Dining Area	12'4" x 14'3"	176 sq. ft	Yes
12	Bath	3'10" x 7'10"	30 sq. ft	Yes
13	Deck	25'10" x 25'9"	434 sq. ft	No
14	W.I.C.	6'1" x 10'5"	68 sq. ft	Yes
15	Primary Bedroom	19'9" x 16'5"	283 sq. ft	Yes
16	Family Room	21'2" x 15'4"	333 sq. ft	Yes
17	Hall	23'3" x 8'10"	183 sq. ft	Yes
18	Garage	25'3" x 27'8"	658 sq. ft	Yes
19	Kitchen	14'2" x 18'5"	241 sq. ft	Yes
20	Porch	5'6" x 13'3"	73 sq. ft	No
21	Breakfast Nook	10'1" x 9'9"	99 sq. ft	Yes

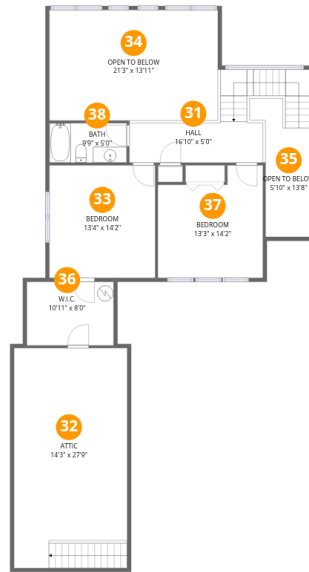
Home data report

25 Findlay Drive, Penhook, Franklin County, Virginia, United States, 24137

#		Dimensions	sqft	Counted as living area
22	W.I.C.	8'11" x 7'3"	61 sq. ft	Yes
23	Living Room	14'5" x 16'4"	233 sq. ft	Yes
24	Bath	3'6" x 5'10"	21 sq. ft	Yes
25	Office	12'7" x 13'1"	166 sq. ft	Yes
26	Balcony	8'10" x 5'3"	46 sq. ft	No
27	Foyer	6'3" x 8'7"	53 sq. ft	Yes
28	Hall	19'5" x 3'2"	61 sq. ft	Yes
29	Laundry	11'8" x 7'10"	92 sq. ft	Yes
30	Primary Bath	14'6" x 13'5"	154 sq. ft	Yes

Home data report

25 Findlay Drive, Penhook, Franklin County, Virginia, United States, 24137



Room dimensions

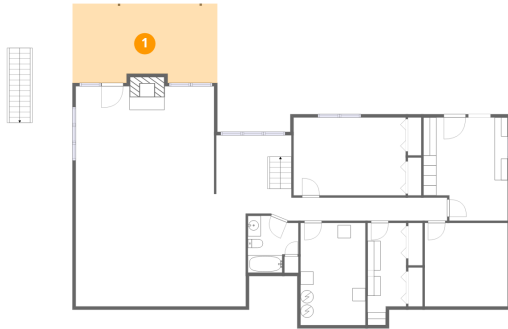
Floor 3

Total:702sqft

Excluded: 786sqft

#		Dimensions	sqft	Counted as living area
31	Hall	16'10" x 5'0"	159 sq. ft	Yes
32	Attic	14'3" x 27'9"	396 sq. ft	No
33	Bedroom	13'4" x 14'2"	189 sq. ft	Yes
34	Open To Below	21'3" x 13'11"	296 sq. ft	No
35	Open To Below	5'10" x 13'8"	94 sq. ft	No
36	W.I.C.	10'11" x 8'0"	88 sq. ft	Yes
37	Bedroom	13'3" x 14'2"	166 sq. ft	Yes
38	Bath	9'9" x 5'0"	49 sq. ft	Yes

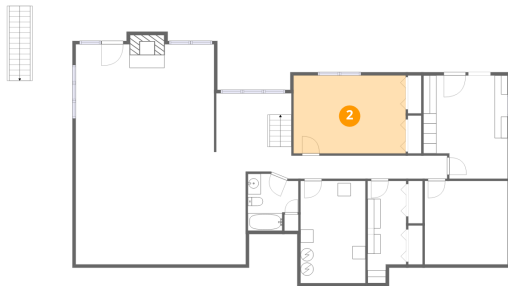
1 Floor 1 - Covered Patio



Dimensions: 22'2" x 12'2"
Area: 262 sq. ft
Counted as living area: No

Heated: No
Finished: No
Enclosed: No
Contiguous: Yes
Permitted: Yes
Wet space: No
Addition: No
Conversion: No

2 Floor 1 - Bedroom



Dimensions: 17'3" x 11'11"
Area: 206 sq. ft
Counted as living area: Yes

Heated: Yes
Finished: Yes
Enclosed: Yes
Contiguous: Yes
Permitted: Yes
Wet space: No
Addition: No
Conversion: No

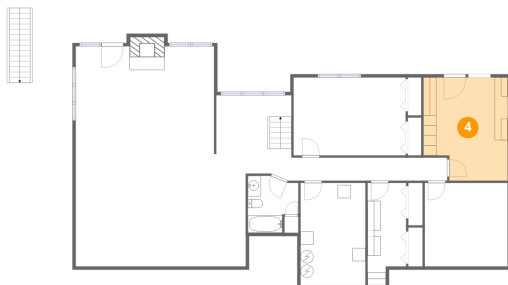
3 Floor 1 - Bath



Dimensions: 7'9" x 8'9"
Area: 58 sq. ft
Counted as living area: Yes

Heated: Yes
Finished: Yes
Enclosed: Yes
Contiguous: Yes
Permitted: Yes
Wet space: Yes
Addition: No
Conversion: No

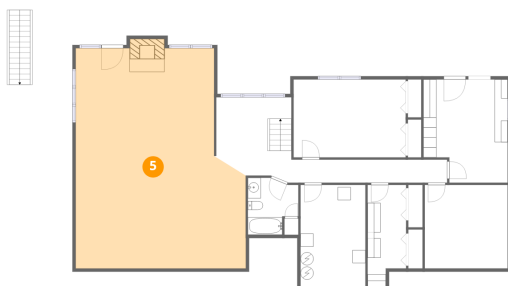
4 Floor 1 - Workshop



Dimensions: 12'11" x 15'10"
Area: 189 sq. ft
Counted as living area: No

Heated: No
Finished: No
Enclosed: Yes
Contiguous: No
Permitted: Yes
Wet space: No
Addition: No
Conversion: No

5 Floor 1 - Recreation Room



Dimensions: 26'1" x 33'9"
Area: 801 sq. ft
Counted as living area: Yes

Heated: Yes
Finished: Yes
Enclosed: Yes
Contiguous: Yes
Permitted: Yes
Wet space: No
Addition: No
Conversion: No

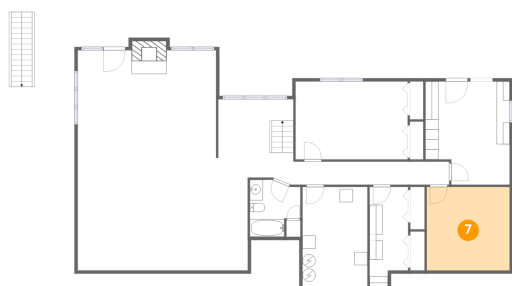
6 Floor 1 - Storage



Dimensions: 5'11" x 15'8"
Area: 84 sq. ft
Counted as living area: No

Heated: No
Finished: No
Enclosed: No
Contiguous: No
Permitted: Yes
Wet space: No
Addition: No
Conversion: No

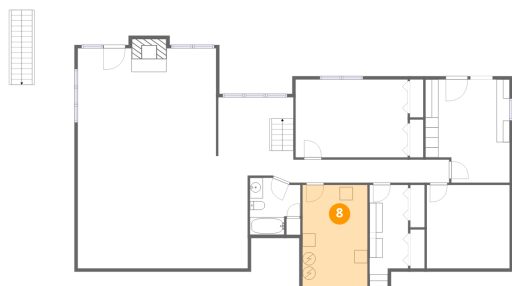
7 Floor 1 - Storage



Dimensions: 12'9" x 12'10"
Area: 163 sq. ft
Counted as living area: No

Heated: No
Finished: No
Enclosed: No
Contiguous: No
Permitted: Yes
Wet space: No
Addition: No
Conversion: No

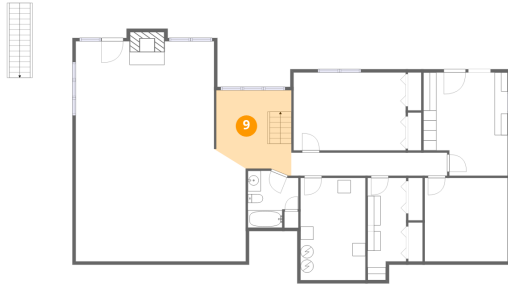
8 Floor 1 - Utility



Dimensions: 10'0" x 15'8"
Area: 156 sq. ft
Counted as living area: Yes

Heated: Yes
Finished: Yes
Enclosed: Yes
Contiguous: Yes
Permitted: Yes
Wet space: No
Addition: No
Conversion: No

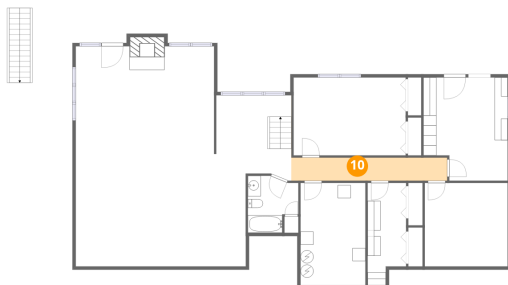
9 Floor 1 - Hall



Dimensions: 10'7" x 12'0"
Area: 134 sq. ft
Counted as living area: Yes

Heated: Yes
Finished: Yes
Enclosed: Yes
Contiguous: Yes
Permitted: Yes
Wet space: No
Addition: No
Conversion: No

10 Floor 1 - Hall



Dimensions: 23'11" x 3'6"
Area: 85 sq. ft
Counted as living area: Yes

Heated: Yes
Finished: Yes
Enclosed: Yes
Contiguous: Yes
Permitted: Yes
Wet space: No
Addition: No
Conversion: No

11 Floor 2 - Dining Area



Dimensions: 12'4" x 14'3"
Area: 176 sq. ft
Counted as living area: Yes

Heated: Yes
Finished: Yes
Enclosed: Yes
Contiguous: Yes
Permitted: Yes
Wet space: No
Addition: No
Conversion: No

12 Floor 2 - Bath



Dimensions: 3'10" x 7'10"
Area: 30 sq. ft
Counted as living area: Yes

Heated: Yes
Finished: Yes
Enclosed: Yes
Contiguous: Yes
Permitted: Yes
Wet space: Yes
Addition: No
Conversion: No

13 Floor 2 - Deck



Dimensions: 25'10" x 25'9"
Area: 434 sq. ft
Counted as living area: No

Heated: No
Finished: No
Enclosed: No
Contiguous: Yes
Permitted: Yes
Wet space: No
Addition: No
Conversion: No

14 Floor 2 - W.I.C.



Dimensions: 6'1" x 10'5"
Area: 68 sq. ft
Counted as living area: Yes

Heated: Yes
Finished: Yes
Enclosed: Yes
Contiguous: Yes
Permitted: Yes
Wet space: No
Addition: No
Conversion: No

15 Floor 2 - Primary Bedroom



Dimensions: 19'9" x 16'5"
Area: 283 sq. ft
Counted as living area: Yes

Heated: Yes
Finished: Yes
Enclosed: Yes
Contiguous: Yes
Permitted: Yes
Wet space: No
Addition: No
Conversion: No

16 Floor 2 - Family Room



Dimensions: 21'2" x 15'4"
Area: 333 sq. ft
Counted as living area: Yes

Heated: Yes
Finished: Yes
Enclosed: Yes
Contiguous: Yes
Permitted: Yes
Wet space: No
Addition: No
Conversion: No

17 Floor 2 - Hall



Dimensions: 23'3" x 8'10"
Area: 183 sq. ft
Counted as living area: Yes

Heated: Yes
Finished: Yes
Enclosed: Yes
Contiguous: Yes
Permitted: Yes
Wet space: No
Addition: No
Conversion: No

18 Floor 2 - Garage



Dimensions: 25'3" x 27'8"
Area: 658 sq. ft
Counted as living area: No

Heated: No
Finished: Yes
Enclosed: Yes
Contiguous: Yes
Permitted: Yes
Wet space: No
Addition: No
Conversion: No

19 Floor 2 - Kitchen



Dimensions: 14'2" x 18'5"
Area: 241 sq. ft
Counted as living area: Yes

Heated: Yes
Finished: Yes
Enclosed: Yes
Contiguous: Yes
Permitted: Yes
Wet space: No
Addition: No
Conversion: No

20 Floor 2 - Porch



Dimensions: 5'6" x 13'3"
Area: 73 sq. ft
Counted as living area: No

Heated: No
Finished: No
Enclosed: No
Contiguous: Yes
Permitted: Yes
Wet space: No
Addition: No
Conversion: No

21 Floor 2 - Breakfast Nook



Dimensions: 10'1" x 9'9"
Area: 99 sq. ft
Counted as living area: Yes

Heated: Yes
Finished: Yes
Enclosed: Yes
Contiguous: Yes
Permitted: Yes
Wet space: No
Addition: No
Conversion: No

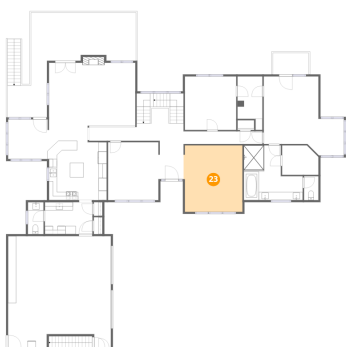
22 Floor 2 - W.I.C.



Dimensions: 8'11" x 7'3"
Area: 61 sq. ft
Counted as living area: Yes

Heated: Yes
Finished: Yes
Enclosed: Yes
Contiguous: Yes
Permitted: Yes
Wet space: No
Addition: No
Conversion: No

23 Floor 2 - Living Room



Dimensions: 14'5" x 16'4"
Area: 233 sq. ft
Counted as living area: Yes

Heated: Yes
Finished: Yes
Enclosed: Yes
Contiguous: Yes
Permitted: Yes
Wet space: No
Addition: No
Conversion: No

24 Floor 2 - Bath



Dimensions: 3'6" x 5'10"
Area: 21 sq. ft
Counted as living area: Yes

Heated: Yes
Finished: Yes
Enclosed: Yes
Contiguous: Yes
Permitted: Yes
Wet space: Yes
Addition: No
Conversion: No

25 Floor 2 - Office



Dimensions: 12'7" x 13'1"
Area: 166 sq. ft
Counted as living area: Yes

Heated: Yes
Finished: Yes
Enclosed: Yes
Contiguous: Yes
Permitted: Yes
Wet space: No
Addition: No
Conversion: No

26 Floor 2 - Balcony



Dimensions: 8'10" x 5'3"
Area: 46 sq. ft
Counted as living area: No

Heated: No
Finished: No
Enclosed: No
Contiguous: Yes
Permitted: Yes
Wet space: No
Addition: No
Conversion: No

27 Floor 2 - Foyer



Dimensions: 6'3" x 8'7"
Area: 53 sq. ft
Counted as living area: Yes

Heated: Yes
Finished: Yes
Enclosed: Yes
Contiguous: Yes
Permitted: Yes
Wet space: No
Addition: No
Conversion: No

28 Floor 2 - Hall



Dimensions: 19'5" x 3'2"
Area: 61 sq. ft
Counted as living area: Yes

Heated: Yes
Finished: Yes
Enclosed: Yes
Contiguous: Yes
Permitted: Yes
Wet space: No
Addition: No
Conversion: No

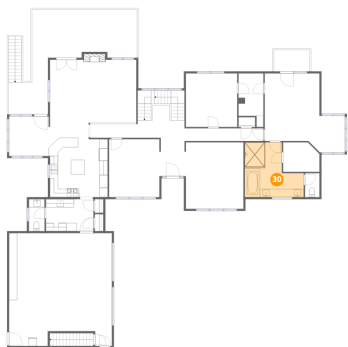
29 Floor 2 - Laundry



Dimensions: 11'8" x 7'10"
Area: 92 sq. ft
Counted as living area: Yes

Heated: Yes
Finished: Yes
Enclosed: Yes
Contiguous: Yes
Permitted: Yes
Wet space: No
Addition: No
Conversion: No

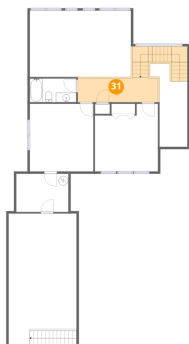
30 Floor 2 - Primary Bath



Dimensions: 14'6" x 13'5"
Area: 154 sq. ft
Counted as living area: Yes

Heated: Yes
Finished: Yes
Enclosed: Yes
Contiguous: Yes
Permitted: Yes
Wet space: Yes
Addition: No
Conversion: No

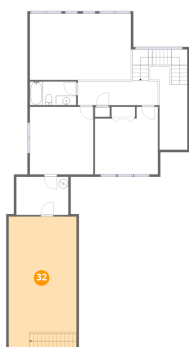
31 Floor 3 - Hall



Dimensions: 16'10" x 5'0"
Area: 159 sq. ft
Counted as living area: Yes

Heated: Yes
Finished: Yes
Enclosed: Yes
Contiguous: Yes
Permitted: Yes
Wet space: No
Addition: No
Conversion: No

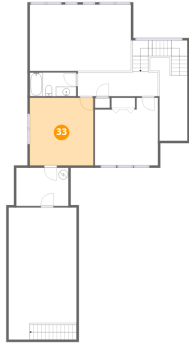
32 Floor 3 - Attic



Dimensions: 14'3" x 27'9"
Area: 396 sq. ft
Counted as living area: No

Heated: No
Finished: No
Enclosed: Yes
Contiguous: Yes
Permitted: Yes
Wet space: No
Addition: No
Conversion: No

33 Floor 3 - Bedroom



Dimensions: 13'4" x 14'2"
Area: 189 sq. ft
Counted as living area: Yes

Heated: Yes
Finished: Yes
Enclosed: Yes
Contiguous: Yes
Permitted: Yes
Wet space: No
Addition: No
Conversion: No

34 Floor 3 - Open To Below



Dimensions: 21'3" x 13'11"
Area: 296 sq. ft
Counted as living area: No

Heated: No
Finished: No
Enclosed: No
Contiguous: Yes
Permitted: No
Wet space: No
Addition: No
Conversion: No

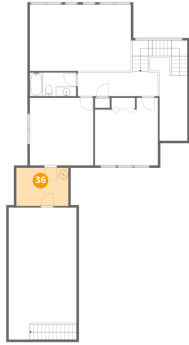
35 Floor 3 - Open To Below



Dimensions: 5'10" x 13'8"
Area: 94 sq. ft
Counted as living area: No

Heated: No
Finished: No
Enclosed: No
Contiguous: Yes
Permitted: No
Wet space: No
Addition: No
Conversion: No

36 Floor 3 - W.I.C.



Dimensions: 10'11" x 8'0"
Area: 88 sq. ft
Counted as living area: Yes

Heated: Yes
Finished: Yes
Enclosed: Yes
Contiguous: Yes
Permitted: Yes
Wet space: No
Addition: No
Conversion: No

37 Floor 3 - Bedroom



Dimensions: 13'3" x 14'2"
Area: 166 sq. ft
Counted as living area: Yes

Heated: Yes
Finished: Yes
Enclosed: Yes
Contiguous: Yes
Permitted: Yes
Wet space: No
Addition: No
Conversion: No

38 Floor 3 - Bath



Dimensions: 9'9" x 5'0"
Area: 49 sq. ft
Counted as living area: Yes

Heated: Yes
Finished: Yes
Enclosed: Yes
Contiguous: Yes
Permitted: Yes
Wet space: Yes
Addition: No
Conversion: No