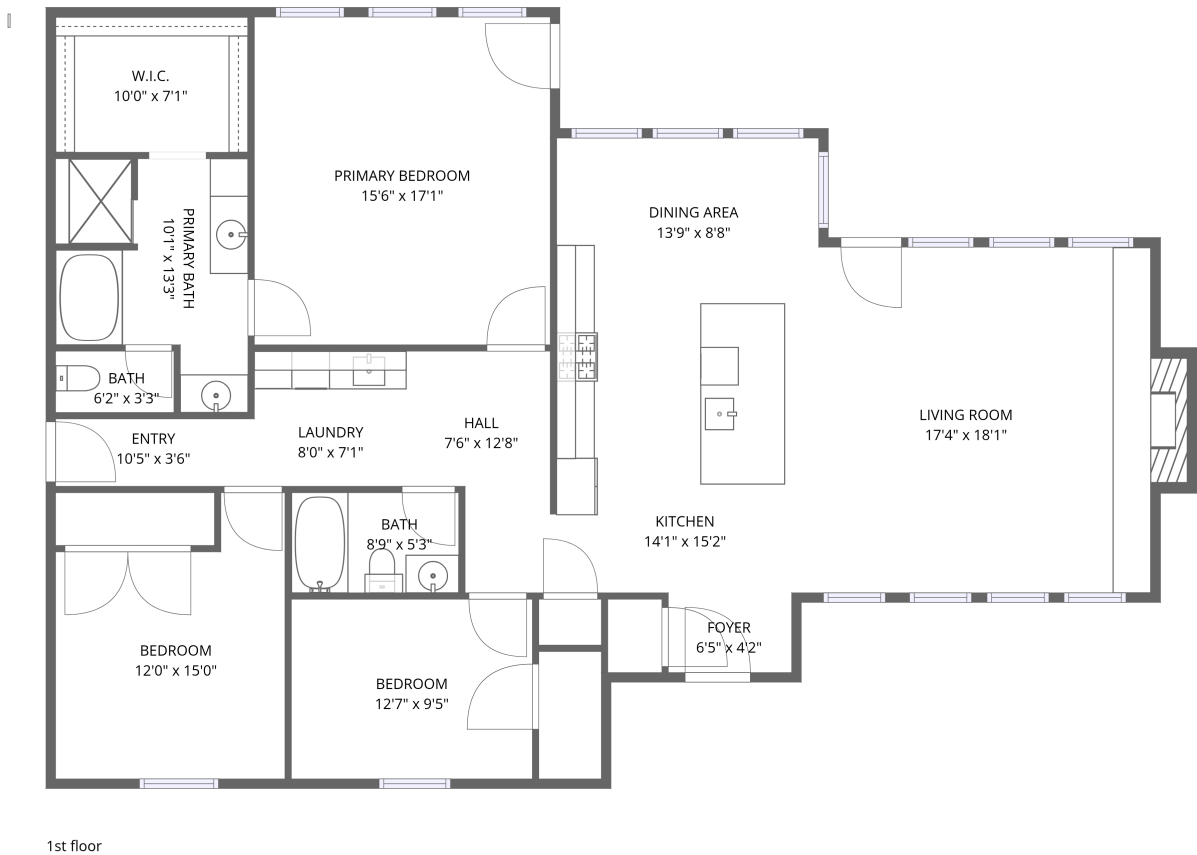


Home data report

393813 West 900 Road, Copan, Washington County, Oklahoma,
United States, 74022



Total Area: 1751 sq. ft

1st Floor: 1751 sq. ft

Excluded: Fireplace 15 sq. ft, Walls: 95 sq. ft

Property summary

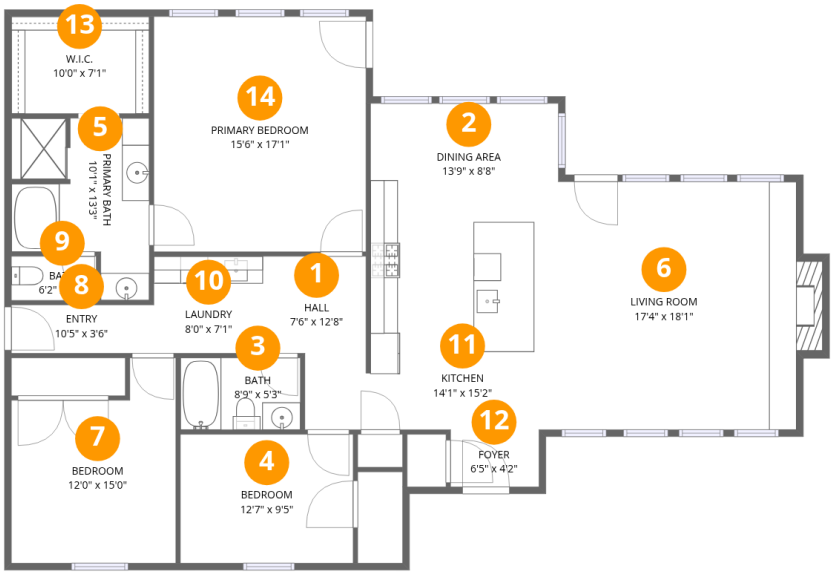
 **1** Floors

 **3** Bedrooms

 **2** Bathrooms

Home data report

393813 West 900 Road, Copan, Washington County, Oklahoma,
United States, 74022



Room dimensions

Floor 1 Total:1751sqft Excluded: 15sqft

#		Dimensions	sqft	Counted as living area
1	Hall	7'6" x 12'8"	95 sq. ft	Yes
2	Dining Area	13'9" x 8'8"	118 sq. ft	Yes
3	Bath	8'9" x 5'3"	46 sq. ft	Yes
4	Bedroom	12'7" x 9'5"	119 sq. ft	Yes
5	Primary Bath	10'1" x 13'3"	134 sq. ft	Yes
6	Living Room	17'4" x 18'1"	313 sq. ft	Yes
7	Bedroom	12'0" x 15'0"	180 sq. ft	Yes
8	Entry	10'5" x 3'6"	37 sq. ft	Yes
9	Bath	6'2" x 3'3"	20 sq. ft	Yes
10	Laundry	8'0" x 7'1"	56 sq. ft	Yes
11	Kitchen	14'1" x 15'2"	212 sq. ft	Yes

Home data report

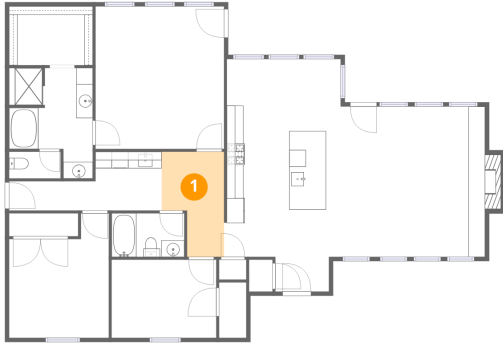
393813 West 900 Road, Copan, Washington County, Oklahoma,
United States, 74022

#		Dimensions	sqft	Counted as living area
12	Foyer	6'5" x 4'2"	27 sq. ft	Yes
13	W.I.C.	10'0" x 7'1"	71 sq. ft	Yes
14	Primary Bedroom	15'6" x 17'1"	265 sq. ft	Yes

Home data report

393813 West 900 Road, Copan, Washington County, Oklahoma,
United States, 74022

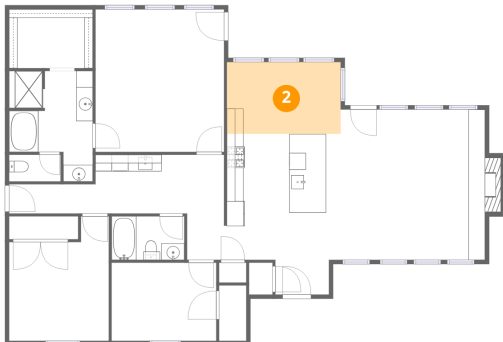
1 Floor 1 - Hall



Dimensions: 7'6" x 12'8"
Area: 95 sq. ft
Counted as living area: Yes

Heated: Yes
Finished: Yes
Enclosed: Yes
Contiguous: Yes
Permitted: Yes
Wet space: No
Addition: No
Conversion: No

2 Floor 1 - Dining Area



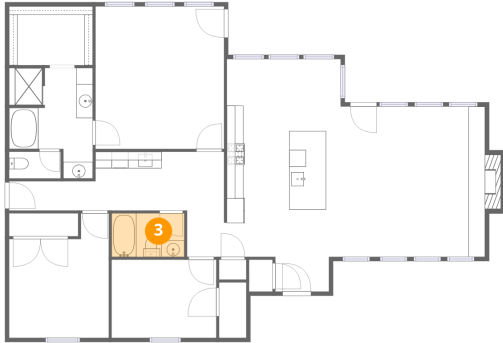
Dimensions: 13'9" x 8'8"
Area: 118 sq. ft
Counted as living area: Yes

Heated: Yes
Finished: Yes
Enclosed: Yes
Contiguous: Yes
Permitted: Yes
Wet space: No
Addition: No
Conversion: No

Home data report

393813 West 900 Road, Copan, Washington County, Oklahoma,
United States, 74022

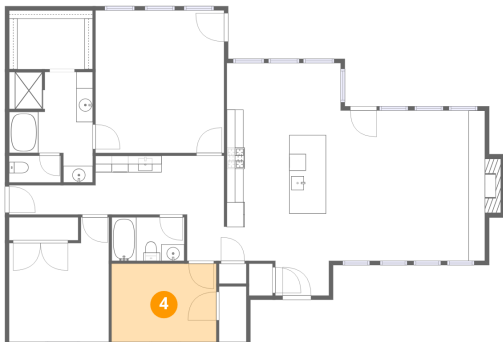
3 Floor 1 - Bath



Dimensions: 8'9" x 5'3"
Area: 46 sq. ft
Counted as living area: Yes

Heated: Yes
Finished: Yes
Enclosed: Yes
Contiguous: Yes
Permitted: Yes
Wet space: Yes
Addition: No
Conversion: No

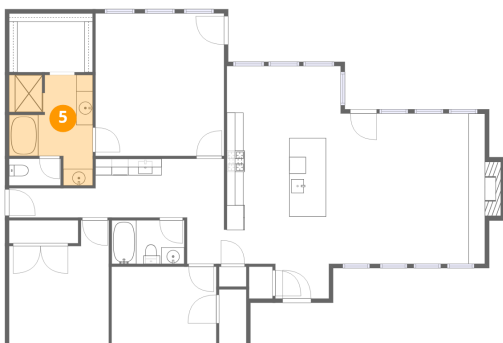
4 Floor 1 - Bedroom



Dimensions: 12'7" x 9'5"
Area: 119 sq. ft
Counted as living area: Yes

Heated: Yes
Finished: Yes
Enclosed: Yes
Contiguous: Yes
Permitted: Yes
Wet space: No
Addition: No
Conversion: No

5 Floor 1 - Primary Bath



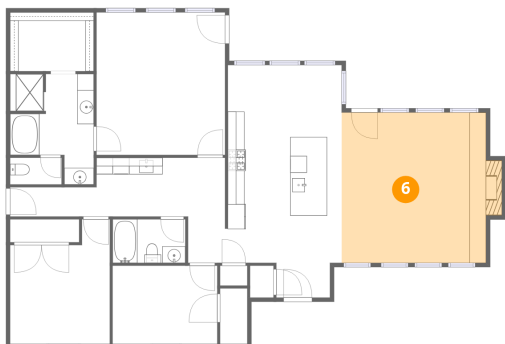
Dimensions: 10'1" x 13'3"
Area: 134 sq. ft
Counted as living area: Yes

Heated: Yes
Finished: Yes
Enclosed: Yes
Contiguous: Yes
Permitted: Yes
Wet space: Yes
Addition: No
Conversion: No

Home data report

393813 West 900 Road, Copan, Washington County, Oklahoma,
United States, 74022

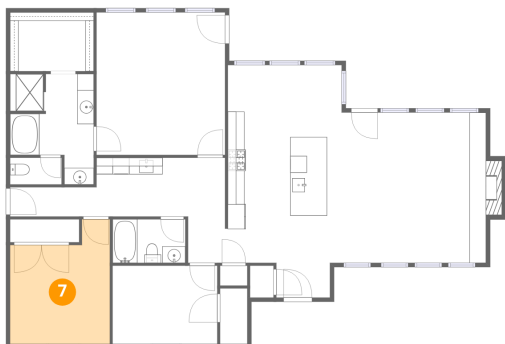
6 Floor 1 - Living Room



Dimensions: 17'4" x 18'1"
Area: 313 sq. ft
Counted as living area: Yes

Heated: Yes
Finished: Yes
Enclosed: Yes
Contiguous: Yes
Permitted: Yes
Wet space: No
Addition: No
Conversion: No

7 Floor 1 - Bedroom



Dimensions: 12'0" x 15'0"
Area: 180 sq. ft
Counted as living area: Yes

Heated: Yes
Finished: Yes
Enclosed: Yes
Contiguous: Yes
Permitted: Yes
Wet space: No
Addition: No
Conversion: No

8 Floor 1 - Entry



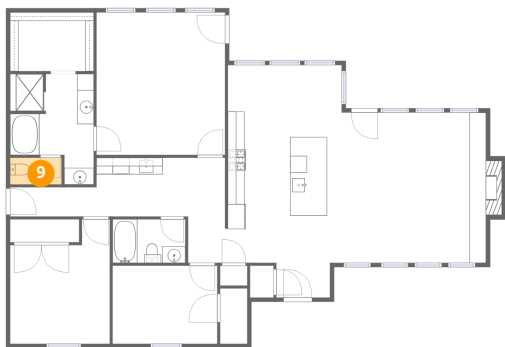
Dimensions: 10'5" x 3'6"
Area: 37 sq. ft
Counted as living area: Yes

Heated: Yes
Finished: Yes
Enclosed: Yes
Contiguous: Yes
Permitted: Yes
Wet space: No
Addition: No
Conversion: No

Home data report

393813 West 900 Road, Copan, Washington County, Oklahoma,
United States, 74022

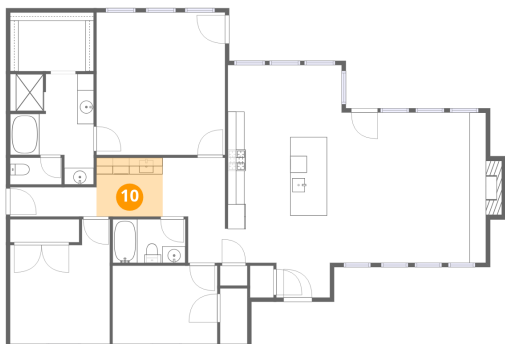
9 Floor 1 - Bath



Dimensions: 6'2" x 3'3"
Area: 20 sq. ft
Counted as living area: Yes

Heated: Yes
Finished: Yes
Enclosed: Yes
Contiguous: Yes
Permitted: Yes
Wet space: Yes
Addition: No
Conversion: No

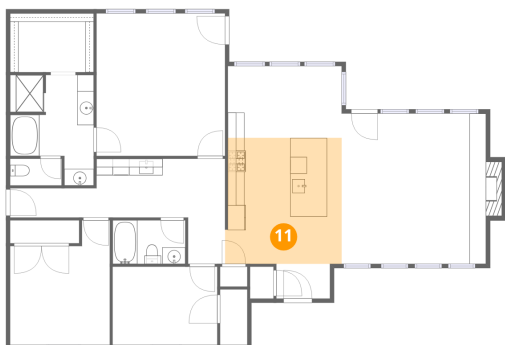
10 Floor 1 - Laundry



Dimensions: 8'0" x 7'1"
Area: 56 sq. ft
Counted as living area: Yes

Heated: Yes
Finished: Yes
Enclosed: Yes
Contiguous: Yes
Permitted: Yes
Wet space: No
Addition: No
Conversion: No

11 Floor 1 - Kitchen



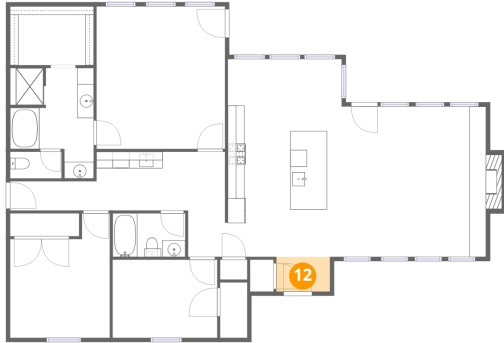
Dimensions: 14'1" x 15'2"
Area: 212 sq. ft
Counted as living area: Yes

Heated: Yes
Finished: Yes
Enclosed: Yes
Contiguous: Yes
Permitted: Yes
Wet space: No
Addition: No
Conversion: No

Home data report

393813 West 900 Road, Copan, Washington County, Oklahoma,
United States, 74022

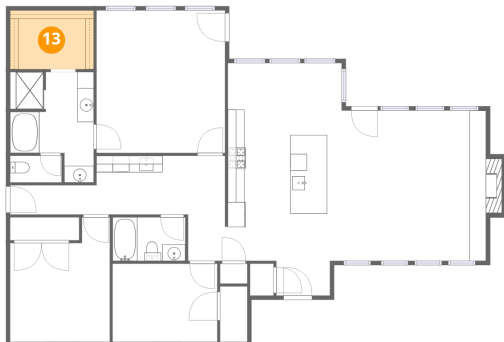
12 Floor 1 - Foyer



Dimensions: 6'5" x 4'2"
Area: 27 sq. ft
Counted as living area: Yes

Heated: Yes
Finished: Yes
Enclosed: Yes
Contiguous: Yes
Permitted: Yes
Wet space: No
Addition: No
Conversion: No

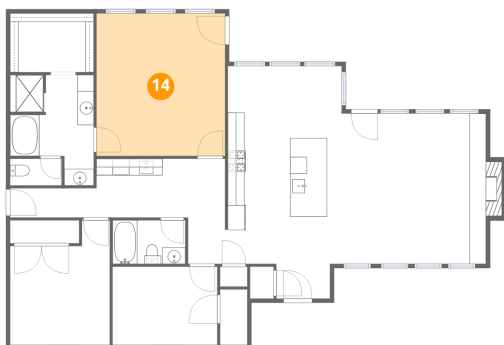
13 Floor 1 - W.I.C.



Dimensions: 10'0" x 7'1"
Area: 71 sq. ft
Counted as living area: Yes

Heated: Yes
Finished: Yes
Enclosed: Yes
Contiguous: Yes
Permitted: Yes
Wet space: No
Addition: No
Conversion: No

14 Floor 1 - Primary Bedroom



Dimensions: 15'6" x 17'1"
Area: 265 sq. ft
Counted as living area: Yes

Heated: Yes
Finished: Yes
Enclosed: Yes
Contiguous: Yes
Permitted: Yes
Wet space: No
Addition: No
Conversion: No