

## Home data report

# 4335 South Rose Court, New Berlin, Wisconsin, United States

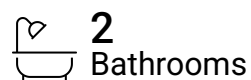
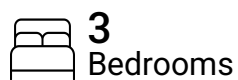


**Total Area: 3095 sq. ft**

Basement: 972 sq. ft, 1st Floor: 2123 sq. ft

Excluded: Basement 491 sq. ft, Walls: 215 sq. ft

## Property summary

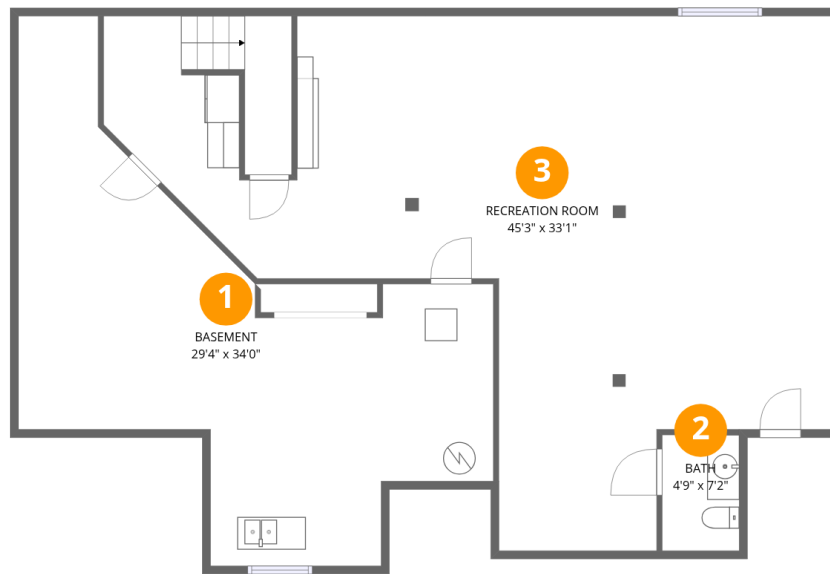


Home data report

**4335 South Rose Court, New Berlin, Wisconsin, United States**

 **1**  
Half baths

 **1**  
Garages



## Room dimensions

Floor 1 Below grade

Total:972sqft

Excluded: 491sqft

#		Dimensions	sqft	Counted as living area
1	Basement	29'4" x 34'0"	490 sq. ft	No
2	Bath	4'9" x 7'2"	34 sq. ft	Yes
3	Recreation Room	45'3" x 33'1"	952 sq. ft	Yes



## Room dimensions

Floor 2

Total: 2123 sqft Excluded: 0 sqft

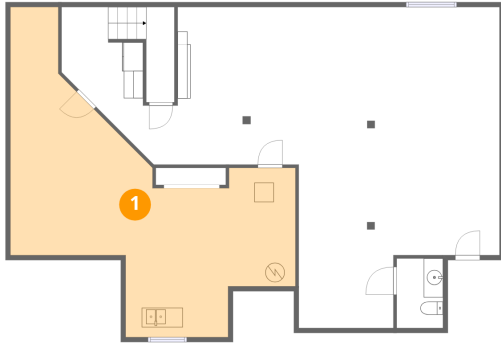
#		Dimensions	sqft	Counted as living area
4	Bath	7'6" x 9'10"	67 sq. ft	Yes
5	Living Room	25'2" x 20'4"	431 sq. ft	Yes
6	Bedroom	10'11" x 9'8"	106 sq. ft	Yes
7	W.I.C.	5'10" x 9'10"	58 sq. ft	Yes
8	Hall	12'11" x 13'6"	80 sq. ft	Yes
9	Primary Bedroom	13'8" x 15'5"	188 sq. ft	Yes
10	Bedroom	10'11" x 10'2"	112 sq. ft	Yes
11	Garage	22'10" x 23'11"	548 sq. ft	Yes
12	Kitchen	10'7" x 14'4"	150 sq. ft	Yes
13	Breakfast Nook	10'7" x 5'3"	56 sq. ft	Yes
14	Bath	7'1" x 7'4"	46 sq. ft	Yes

Home data report

**4335 South Rose Court, New Berlin, Wisconsin, United States**

#		Dimensions	sqft	Counted as living area
15	Foyer	6'7" x 8'6"	48 sq. ft	Yes
16	Laundry	7'6" x 12'6"	84 sq. ft	Yes

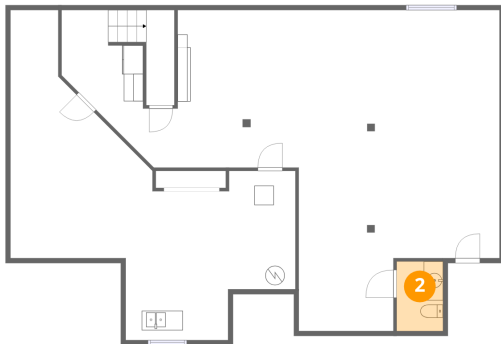
## 1 Floor 1 - Basement



Dimensions: 29'4" x 34'0"  
Area: 490 sq. ft  
Counted as living area: No

Heated: Yes  
Finished: No  
Enclosed: Yes  
Contiguous: Yes  
Permitted: Yes  
Wet space: No  
Addition: No  
Conversion: No

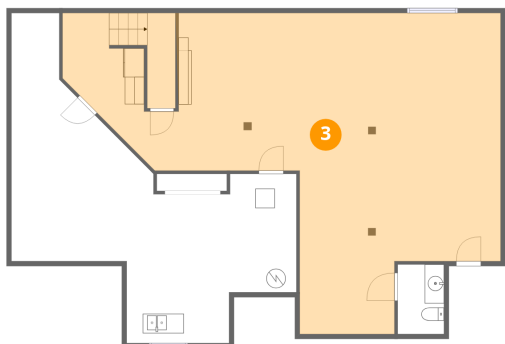
## 2 Floor 1 - Bath



Dimensions: 4'9" x 7'2"  
Area: 34 sq. ft  
Counted as living area: No

Heated: Yes  
Finished: Yes  
Enclosed: Yes  
Contiguous: No  
Permitted: Yes  
Wet space: Yes  
Addition: No  
Conversion: No

### 3 Floor 1 - Recreation Room



Dimensions: 45'3" x 33'1"  
Area: 952 sq. ft  
Counted as living area: No

Heated: Yes  
Finished: Yes  
Enclosed: Yes  
Contiguous: No  
Permitted: Yes  
Wet space: No  
Addition: No  
Conversion: No

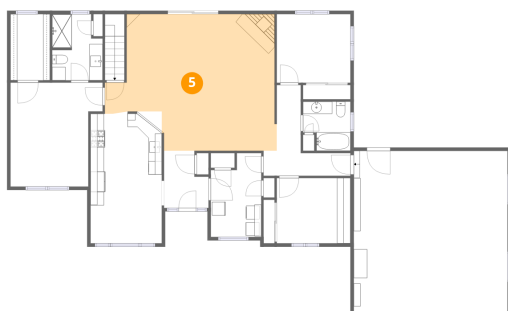
### 4 Floor 2 - Bath



Dimensions: 7'6" x 9'10"  
Area: 67 sq. ft  
Counted as living area: Yes

Heated: Yes  
Finished: Yes  
Enclosed: Yes  
Contiguous: Yes  
Permitted: Yes  
Wet space: Yes  
Addition: No  
Conversion: No

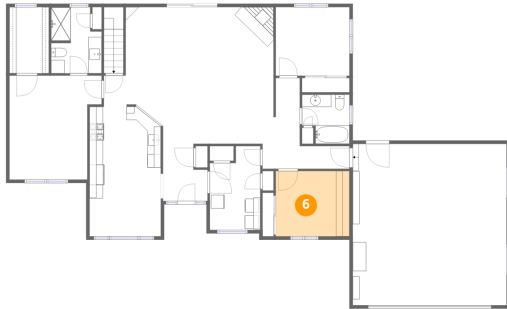
### 5 Floor 2 - Living Room



Dimensions: 25'2" x 20'4"  
Area: 431 sq. ft  
Counted as living area: Yes

Heated: Yes  
Finished: Yes  
Enclosed: Yes  
Contiguous: Yes  
Permitted: Yes  
Wet space: No  
Addition: No  
Conversion: No

## 6 Floor 2 - Bedroom



Dimensions: 10'11" x 9'8"  
Area: 106 sq. ft  
Counted as living area: Yes

Heated: Yes  
Finished: Yes  
Enclosed: Yes  
Contiguous: Yes  
Permitted: Yes  
Wet space: No  
Addition: No  
Conversion: No

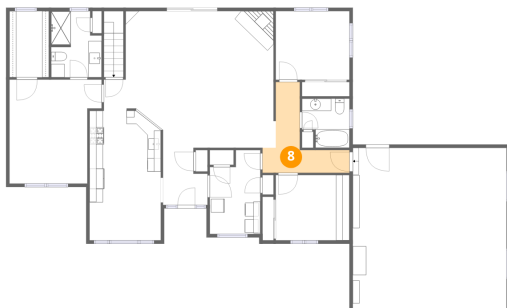
## 7 Floor 2 - W.I.C.



Dimensions: 5'10" x 9'10"  
Area: 58 sq. ft  
Counted as living area: Yes

Heated: Yes  
Finished: Yes  
Enclosed: Yes  
Contiguous: Yes  
Permitted: Yes  
Wet space: No  
Addition: No  
Conversion: No

## 8 Floor 2 - Hall



Dimensions: 12'11" x 13'6"  
Area: 80 sq. ft  
Counted as living area: Yes

Heated: Yes  
Finished: Yes  
Enclosed: Yes  
Contiguous: Yes  
Permitted: Yes  
Wet space: No  
Addition: No  
Conversion: No

## 9 Floor 2 - Primary Bedroom



Dimensions: 13'8" x 15'5"  
Area: 188 sq. ft  
Counted as living area: Yes

Heated: Yes  
Finished: Yes  
Enclosed: Yes  
Contiguous: Yes  
Permitted: Yes  
Wet space: No  
Addition: No  
Conversion: No

## 10 Floor 2 - Bedroom



Dimensions: 10'11" x 10'2"  
Area: 112 sq. ft  
Counted as living area: Yes

Heated: Yes  
Finished: Yes  
Enclosed: Yes  
Contiguous: Yes  
Permitted: Yes  
Wet space: No  
Addition: No  
Conversion: No

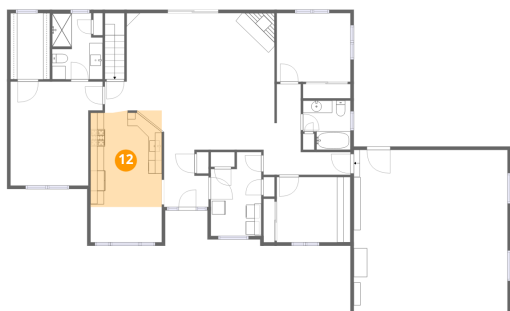
## 11 Floor 2 - Garage



Dimensions: 22'10" x 23'11"  
Area: 548 sq. ft  
Counted as living area: No

Heated: No  
Finished: Yes  
Enclosed: Yes  
Contiguous: Yes  
Permitted: Yes  
Wet space: No  
Addition: No  
Conversion: No

## 12 Floor 2 - Kitchen



Dimensions: 10'7" x 14'4"  
Area: 150 sq. ft  
Counted as living area: Yes

Heated: Yes  
Finished: Yes  
Enclosed: Yes  
Contiguous: Yes  
Permitted: Yes  
Wet space: No  
Addition: No  
Conversion: No

## 13 Floor 2 - Breakfast Nook



Dimensions: 10'7" x 5'3"  
Area: 56 sq. ft  
Counted as living area: Yes

Heated: Yes  
Finished: Yes  
Enclosed: Yes  
Contiguous: Yes  
Permitted: Yes  
Wet space: No  
Addition: No  
Conversion: No

## 14 Floor 2 - Bath



Dimensions: 7'1" x 7'4"  
Area: 46 sq. ft  
Counted as living area: Yes

Heated: Yes  
Finished: Yes  
Enclosed: Yes  
Contiguous: Yes  
Permitted: Yes  
Wet space: Yes  
Addition: No  
Conversion: No

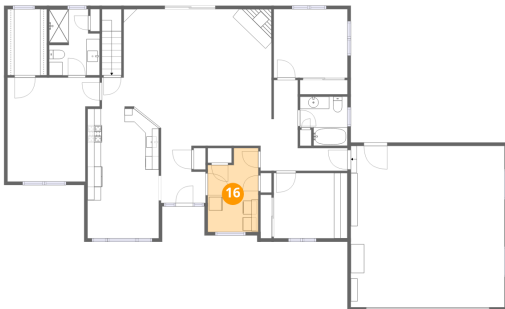
**15** Floor 2 - Foyer



Dimensions: 6'7" x 8'6"  
Area: 48 sq. ft  
Counted as living area: Yes

Heated: Yes  
Finished: Yes  
Enclosed: Yes  
Contiguous: Yes  
Permitted: Yes  
Wet space: No  
Addition: No  
Conversion: No

**16** Floor 2 - Laundry



Dimensions: 7'6" x 12'6"  
Area: 84 sq. ft  
Counted as living area: Yes

Heated: Yes  
Finished: Yes  
Enclosed: Yes  
Contiguous: Yes  
Permitted: Yes  
Wet space: No  
Addition: No  
Conversion: No