

# Home data report

## 214 Lockhard Cir, Troutman, NC, US




**Total Area: 2330 sq. ft**

1st Floor: 1989 sq. ft, 2nd Floor: 341 sq. ft

Excluded: Garage 537 sq. ft, Porch 175 sq. ft, Covered deck 142 sq. ft

### Property summary

 **2** Floors

 **3** Bedrooms

 **2** Bathrooms

 **1** Garages



## Room dimensions

Floor 1

Total: 1989sqft

Excluded: 854sqft

#		Dimensions	sqft	Counted as living area
1	Dining Area	11'9" x 11'1"	131 sq. ft	Yes
2	Covered Deck	12'0" x 11'0"	142 sq. ft	No
3	Hall	14'1" x 8'0"	100 sq. ft	Yes
4	Hall	3'4" x 10'4"	35 sq. ft	Yes
5	Bath	11'9" x 4'10"	57 sq. ft	Yes
6	Primary Bedroom	14'7" x 16'4"	238 sq. ft	Yes
7	Laundry	9'2" x 8'0"	59 sq. ft	Yes
8	W.I.C.	6'10" x 11'8"	70 sq. ft	Yes
9	Foyer	7'3" x 11'1"	81 sq. ft	Yes
10	Garage	23'7" x 21'4"	503 sq. ft	No
11	Porch	20'11" x 8'4"	175 sq. ft	No

Home data report

**214 Lockhard Cir, Troutman, NC, US**

#		Dimensions	sqft	Counted as living area
12	Living Room	19'0" x 14'8"	278 sq. ft	Yes
13	Kitchen	11'3" x 20'2"	215 sq. ft	Yes
14	Bedroom	15'5" x 11'5"	177 sq. ft	Yes
15	Bath	10'4" x 11'8"	94 sq. ft	Yes
16	Bedroom	15'5" x 11'8"	180 sq. ft	Yes



## Room dimensions

Floor 2

Total:341sqft Excluded: 0sqft

#		Dimensions	sqft	Counted as living area
17	Room	12'0" x 21'6"	247 sq. ft	Yes

## 1 Floor 1 - Dining Area



Dimensions: 11'9" x 11'1"  
Area: 131 sq. ft  
Counted as living area: Yes

Heated: Yes  
Finished: Yes  
Enclosed: Yes  
Contiguous: Yes  
Permitted: Yes  
Wet space: No  
Addition: No  
Conversion: No

## 2 Floor 1 - Covered Deck



Dimensions: 12'0" x 11'0"  
Area: 142 sq. ft  
Counted as living area: No

Heated: No  
Finished: No  
Enclosed: No  
Contiguous: Yes  
Permitted: Yes  
Wet space: No  
Addition: No  
Conversion: No

### 3 Floor 1 - Hall



Dimensions: 14'1" x 8'0"  
Area: 100 sq. ft  
Counted as living area: Yes

Heated: Yes  
Finished: Yes  
Enclosed: Yes  
Contiguous: Yes  
Permitted: Yes  
Wet space: No  
Addition: No  
Conversion: No

### 4 Floor 1 - Hall



Dimensions: 3'4" x 10'4"  
Area: 35 sq. ft  
Counted as living area: Yes

Heated: Yes  
Finished: Yes  
Enclosed: Yes  
Contiguous: Yes  
Permitted: Yes  
Wet space: No  
Addition: No  
Conversion: No

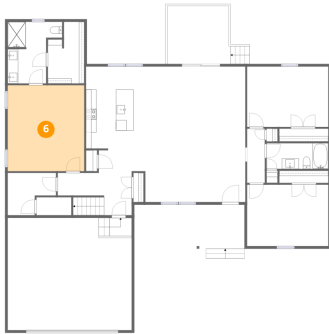
### 5 Floor 1 - Bath



Dimensions: 11'9" x 4'10"  
Area: 57 sq. ft  
Counted as living area: Yes

Heated: Yes  
Finished: Yes  
Enclosed: Yes  
Contiguous: Yes  
Permitted: Yes  
Wet space: Yes  
Addition: No  
Conversion: No

## 6 Floor 1 - Primary Bedroom



Dimensions: 14'7" x 16'4"  
Area: 238 sq. ft  
Counted as living area: Yes

Heated: Yes  
Finished: Yes  
Enclosed: Yes  
Contiguous: Yes  
Permitted: Yes  
Wet space: No  
Addition: No  
Conversion: No

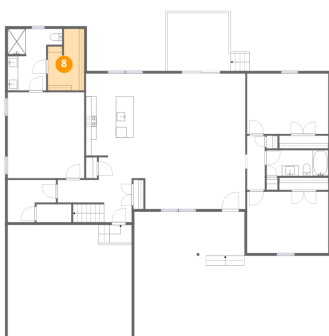
## 7 Floor 1 - Laundry



Dimensions: 9'2" x 8'0"  
Area: 59 sq. ft  
Counted as living area: Yes

Heated: Yes  
Finished: Yes  
Enclosed: Yes  
Contiguous: Yes  
Permitted: Yes  
Wet space: No  
Addition: No  
Conversion: No

## 8 Floor 1 - W.I.C.



Dimensions: 6'10" x 11'8"  
Area: 70 sq. ft  
Counted as living area: Yes

Heated: Yes  
Finished: Yes  
Enclosed: Yes  
Contiguous: Yes  
Permitted: Yes  
Wet space: No  
Addition: No  
Conversion: No

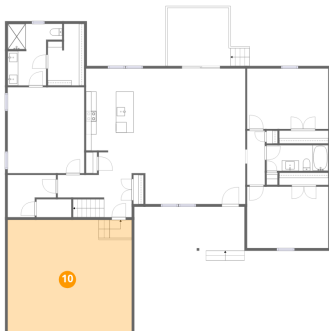
### 9 Floor 1 - Foyer



Dimensions: 7'3" x 11'1"  
Area: 81 sq. ft  
Counted as living area: Yes

Heated: Yes  
Finished: Yes  
Enclosed: Yes  
Contiguous: Yes  
Permitted: Yes  
Wet space: No  
Addition: No  
Conversion: No

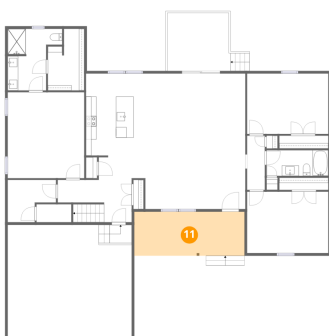
### 10 Floor 1 - Garage



Dimensions: 23'7" x 21'4"  
Area: 503 sq. ft  
Counted as living area: No

Heated: No  
Finished: No  
Enclosed: Yes  
Contiguous: Yes  
Permitted: Yes  
Wet space: No  
Addition: No  
Conversion: No

### 11 Floor 1 - Porch



Dimensions: 20'11" x 8'4"  
Area: 175 sq. ft  
Counted as living area: No

Heated: No  
Finished: No  
Enclosed: No  
Contiguous: Yes  
Permitted: Yes  
Wet space: No  
Addition: No  
Conversion: No

## 12 Floor 1 - Living Room



Dimensions: 19'0" x 14'8"  
Area: 278 sq. ft  
Counted as living area: Yes

Heated: Yes  
Finished: Yes  
Enclosed: Yes  
Contiguous: Yes  
Permitted: Yes  
Wet space: No  
Addition: No  
Conversion: No

## 13 Floor 1 - Kitchen



Dimensions: 11'3" x 20'2"  
Area: 215 sq. ft  
Counted as living area: Yes

Heated: Yes  
Finished: Yes  
Enclosed: Yes  
Contiguous: Yes  
Permitted: Yes  
Wet space: No  
Addition: No  
Conversion: No

## 14 Floor 1 - Bedroom



Dimensions: 15'5" x 11'5"  
Area: 177 sq. ft  
Counted as living area: Yes

Heated: Yes  
Finished: Yes  
Enclosed: Yes  
Contiguous: Yes  
Permitted: Yes  
Wet space: No  
Addition: No  
Conversion: No

**15** Floor 1 - Bath



Dimensions: 10'4" x 11'8"  
Area: 94 sq. ft  
Counted as living area: Yes

Heated: Yes  
Finished: Yes  
Enclosed: Yes  
Contiguous: Yes  
Permitted: Yes  
Wet space: Yes  
Addition: No  
Conversion: No

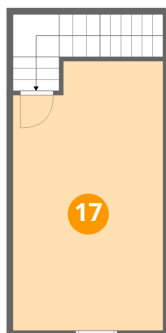
**16** Floor 1 - Bedroom



Dimensions: 15'5" x 11'8"  
Area: 180 sq. ft  
Counted as living area: Yes

Heated: Yes  
Finished: Yes  
Enclosed: Yes  
Contiguous: Yes  
Permitted: Yes  
Wet space: No  
Addition: No  
Conversion: No

**17** Floor 2 - Room



Dimensions: 12'0" x 21'6"  
Area: 247 sq. ft  
Counted as living area: Yes

Heated: Yes  
Finished: Yes  
Enclosed: Yes  
Contiguous: Yes  
Permitted: Yes  
Wet space: No  
Addition: No  
Conversion: No