



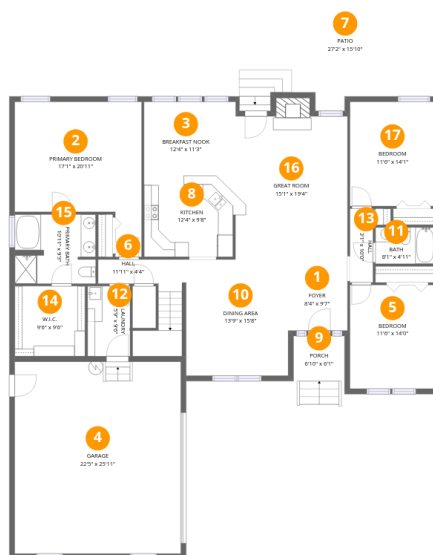
## Total Area: 2687 sq. ft

1st Floor: 2130 sq. ft, 2nd Floor: 557 sq. ft

Excluded: Garage 635 sq. ft, Patio 392 sq. ft, Porch 42 sq. ft, Fireplace 15 sq. ft

## Property summary





## Room dimensions

Floor 1

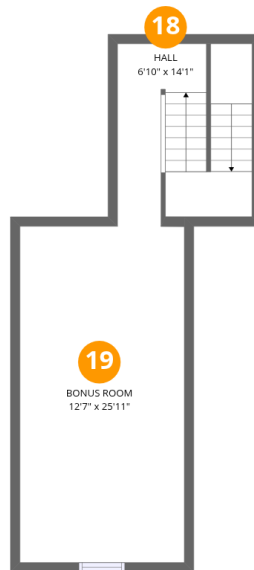
Total:2130sqft Excluded: 1084sqft

#		Dimensions	sqft	Counted as living area
1	Foyer	8'4" x 9'7"	78 sq. ft	Yes
2	Primary Bedroom	17'1" x 20'11"	276 sq. ft	Yes
3	Breakfast Nook	12'4" x 11'3"	139 sq. ft	Yes
4	Garage	22'5" x 25'11"	581 sq. ft	No
5	Bedroom	11'6" x 14'0"	161 sq. ft	Yes
6	Hall	11'11" x 4'4"	82 sq. ft	Yes
7	Patio	27'2" x 15'10"	392 sq. ft	No
8	Kitchen	12'4" x 9'8"	118 sq. ft	Yes
9	Porch	6'10" x 6'1"	42 sq. ft	No
10	Dining Area	13'9" x 15'8"	216 sq. ft	Yes
11	Bath	8'1" x 4'11"	40 sq. ft	Yes

**101 Kentucky Drive, Madison, Madison County,  
Alabama, United States, 35758**



#		Dimensions	sqft	Counted as living area
12	Laundry	5'9" x 9'6"	54 sq. ft	Yes
13	Hall	3'1" x 10'0"	31 sq. ft	Yes
14	W.I.C.	9'6" x 9'6"	90 sq. ft	Yes
15	Primary Bath	10'11" x 9'3"	99 sq. ft	Yes
16	Great Room	15'1" x 19'4"	304 sq. ft	Yes
17	Bedroom	11'6" x 14'1"	162 sq. ft	Yes



## Room dimensions

Floor 2

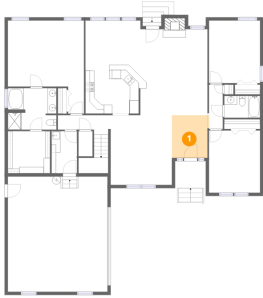
Total:557sqft

Excluded: 0sqft

#		Dimensions	sqft	Counted as living area
18	Hall	6'10" x 14'1"	139 sq. ft	Yes
19	Bonus Room	12'7" x 25'11"	328 sq. ft	Yes



## 1 Floor 1 - Foyer



Dimensions: 8'4" x 9'7"  
Area: 78 sq. ft  
Counted as living area: Yes

Heated: Yes  
Finished: Yes  
Enclosed: Yes  
Contiguous: Yes  
Permitted: Yes  
Wet space: No  
Addition: No  
Conversion: No

## 2 Floor 1 - Primary Bedroom



Dimensions: 17'1" x 20'11"  
Area: 276 sq. ft  
Counted as living area: Yes

Heated: Yes  
Finished: Yes  
Enclosed: Yes  
Contiguous: Yes  
Permitted: Yes  
Wet space: No  
Addition: No  
Conversion: No



### 3 Floor 1 - Breakfast Nook



Dimensions: 12'4" x 11'3"  
Area: 139 sq. ft  
Counted as living area: Yes

Heated: Yes  
Finished: Yes  
Enclosed: Yes  
Contiguous: Yes  
Permitted: Yes  
Wet space: No  
Addition: No  
Conversion: No

### 4 Floor 1 - Garage



Dimensions: 22'5" x 25'11"  
Area: 581 sq. ft  
Counted as living area: No

Heated: No  
Finished: No  
Enclosed: Yes  
Contiguous: Yes  
Permitted: Yes  
Wet space: No  
Addition: No  
Conversion: No

### 5 Floor 1 - Bedroom



Dimensions: 11'6" x 14'0"  
Area: 161 sq. ft  
Counted as living area: Yes

Heated: Yes  
Finished: Yes  
Enclosed: Yes  
Contiguous: Yes  
Permitted: Yes  
Wet space: No  
Addition: No  
Conversion: No



## 6 Floor 1 - Hall



Dimensions: 11'11" x 4'4"  
Area: 82 sq. ft  
Counted as living area: Yes

Heated: Yes  
Finished: Yes  
Enclosed: Yes  
Contiguous: Yes  
Permitted: Yes  
Wet space: No  
Addition: No  
Conversion: No

## 7 Floor 1 - Patio



Dimensions: 27'2" x 15'10"  
Area: 392 sq. ft  
Counted as living area: No

Heated: No  
Finished: No  
Enclosed: No  
Contiguous: Yes  
Permitted: Yes  
Wet space: No  
Addition: No  
Conversion: No

## 8 Floor 1 - Kitchen



Dimensions: 12'4" x 9'8"  
Area: 118 sq. ft  
Counted as living area: Yes

Heated: Yes  
Finished: Yes  
Enclosed: Yes  
Contiguous: Yes  
Permitted: Yes  
Wet space: No  
Addition: No  
Conversion: No



### 9 Floor 1 - Porch



Dimensions: 6'10" x 6'1"  
Area: 42 sq. ft  
Counted as living area: No

Heated: No  
Finished: No  
Enclosed: No  
Contiguous: Yes  
Permitted: Yes  
Wet space: No  
Addition: No  
Conversion: No

### 10 Floor 1 - Dining Area



Dimensions: 13'9" x 15'8"  
Area: 216 sq. ft  
Counted as living area: Yes

Heated: Yes  
Finished: Yes  
Enclosed: Yes  
Contiguous: Yes  
Permitted: Yes  
Wet space: No  
Addition: No  
Conversion: No

### 11 Floor 1 - Bath



Dimensions: 8'1" x 4'11"  
Area: 40 sq. ft  
Counted as living area: Yes

Heated: Yes  
Finished: Yes  
Enclosed: Yes  
Contiguous: Yes  
Permitted: Yes  
Wet space: Yes  
Addition: No  
Conversion: No



## 12 Floor 1 - Laundry



Dimensions: 5'9" x 9'6"  
Area: 54 sq. ft  
Counted as living area: Yes

Heated: Yes  
Finished: Yes  
Enclosed: Yes  
Contiguous: Yes  
Permitted: Yes  
Wet space: No  
Addition: No  
Conversion: No

## 13 Floor 1 - Hall



Dimensions: 3'1" x 10'0"  
Area: 31 sq. ft  
Counted as living area: Yes

Heated: Yes  
Finished: Yes  
Enclosed: Yes  
Contiguous: Yes  
Permitted: Yes  
Wet space: No  
Addition: No  
Conversion: No

## 14 Floor 1 - W.I.C.



Dimensions: 9'6" x 9'6"  
Area: 90 sq. ft  
Counted as living area: Yes

Heated: Yes  
Finished: Yes  
Enclosed: Yes  
Contiguous: Yes  
Permitted: Yes  
Wet space: No  
Addition: No  
Conversion: No



### 15 Floor 1 - Primary Bath



Dimensions: 10'11" x 9'3"  
Area: 99 sq. ft  
Counted as living area: Yes

Heated: Yes  
Finished: Yes  
Enclosed: Yes  
Contiguous: Yes  
Permitted: Yes  
Wet space: Yes  
Addition: No  
Conversion: No

### 16 Floor 1 - Great Room



Dimensions: 15'1" x 19'4"  
Area: 304 sq. ft  
Counted as living area: Yes

Heated: Yes  
Finished: Yes  
Enclosed: Yes  
Contiguous: Yes  
Permitted: Yes  
Wet space: No  
Addition: No  
Conversion: No

### 17 Floor 1 - Bedroom

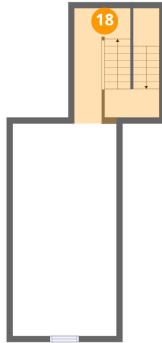


Dimensions: 11'6" x 14'1"  
Area: 162 sq. ft  
Counted as living area: Yes

Heated: Yes  
Finished: Yes  
Enclosed: Yes  
Contiguous: Yes  
Permitted: Yes  
Wet space: No  
Addition: No  
Conversion: No



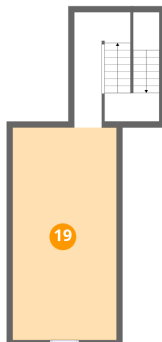
### 18 Floor 2 - Hall



Dimensions: 6'10" x 14'1"  
Area: 139 sq. ft  
Counted as living area: Yes

Heated: Yes  
Finished: Yes  
Enclosed: Yes  
Contiguous: Yes  
Permitted: Yes  
Wet space: No  
Addition: No  
Conversion: No

### 19 Floor 2 - Bonus Room



Dimensions: 12'7" x 25'11"  
Area: 328 sq. ft  
Counted as living area: Yes

Heated: Yes  
Finished: Yes  
Enclosed: Yes  
Contiguous: Yes  
Permitted: Yes  
Wet space: No  
Addition: No  
Conversion: No