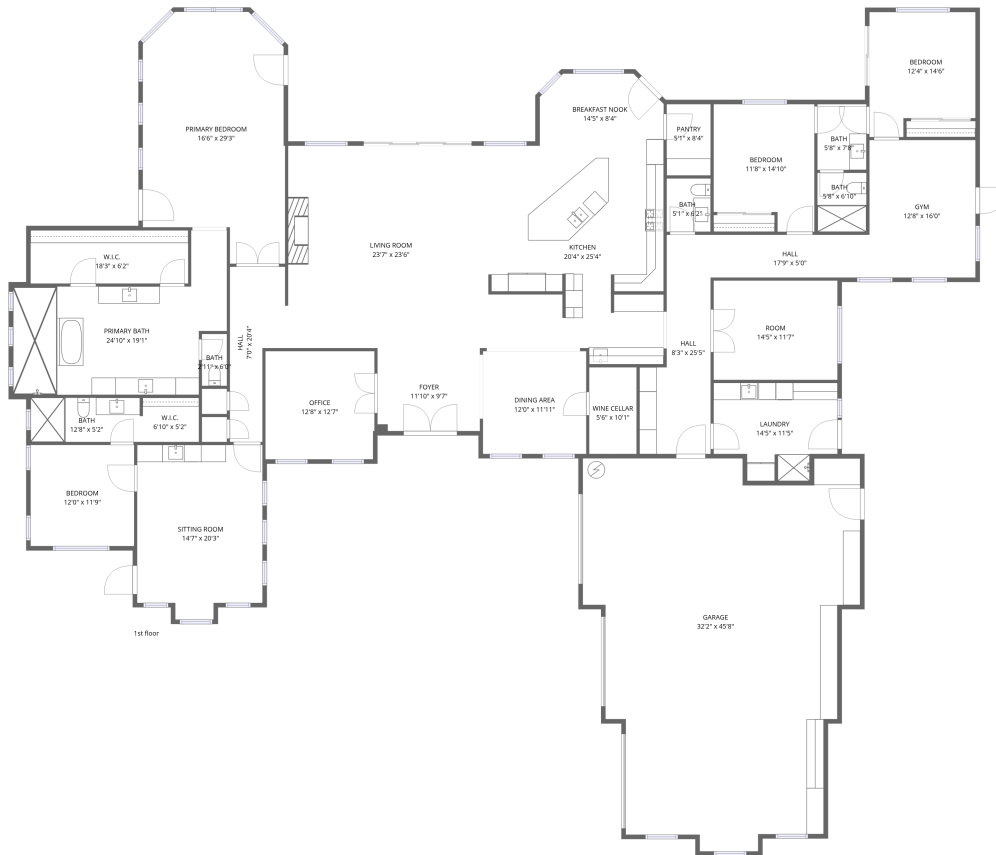


Home data report

26475 North 106th Way, Troon Village, Scottsdale, Maricopa County, Arizona, United States, 85255



Total Area: 4484 sq. ft

1st Floor: 4484 sq. ft

Excluded: Garage 1199 sq. ft, Wine cellar 55 sq. ft, Walls: 267 sq. ft

Property summary



1
Floors



4
Bedrooms



3
Bathrooms

Home data report

26475 North 106th Way, Troon Village, Scottsdale, Maricopa County, Arizona, United States, 85255



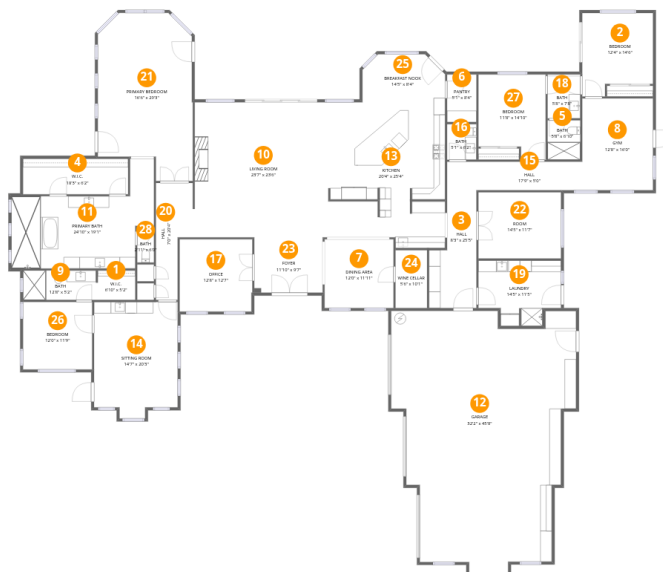
1
Half baths



1
Garages

Home data report

26475 North 106th Way, Troon Village, Scottsdale, Maricopa County, Arizona, United States, 85255



Room dimensions

Floor 1

Total:4484sqft

Excluded: 1254sqft

#		Dimensions	sqft	Counted as living area
1	W.I.C.	6'10" x 5'2"	35 sq. ft	Yes
2	Bedroom	12'4" x 14'6"	178 sq. ft	Yes
3	Hall	8'3" x 25'5"	209 sq. ft	Yes
4	W.I.C.	18'3" x 6'2"	113 sq. ft	Yes
5	Bath	5'8" x 6'10"	39 sq. ft	Yes
6	Pantry	5'1" x 8'4"	42 sq. ft	Yes
7	Dining Area	12'0" x 11'11"	143 sq. ft	Yes
8	Gym	12'8" x 16'0"	202 sq. ft	Yes
9	Bath	12'8" x 5'2"	65 sq. ft	Yes
10	Living Room	23'7" x 23'6"	554 sq. ft	Yes
11	Primary Bath	24'10" x 19'1"	474 sq. ft	Yes

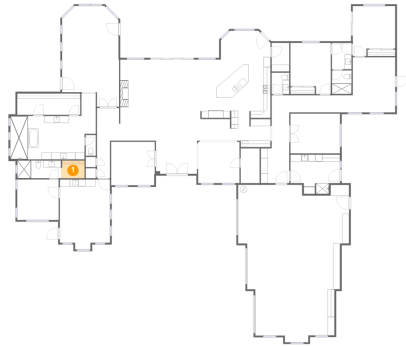
Home data report

26475 North 106th Way, Troon Village, Scottsdale, Maricopa County, Arizona, United States, 85255

#		Dimensions	sqft	Counted as living area
12	Garage	32'2" x 45'8"	1468 sq. ft	No
13	Kitchen	20'4" x 25'4"	516 sq. ft	Yes
14	Sitting Room	14'7" x 20'3"	295 sq. ft	Yes
15	Hall	17'9" x 5'0"	88 sq. ft	Yes
16	Bath	5'1" x 6'2"	32 sq. ft	Yes
17	Office	12'8" x 12'7"	159 sq. ft	Yes
18	Bath	5'8" x 7'8"	44 sq. ft	Yes
19	Laundry	14'5" x 11'5"	164 sq. ft	Yes
20	Hall	7'0" x 20'4"	143 sq. ft	Yes
21	Primary Bedroom	16'6" x 29'3"	484 sq. ft	Yes
22	Room	14'5" x 11'7"	166 sq. ft	Yes
23	Foyer	11'10" x 9'7"	114 sq. ft	Yes
24	Wine Cellar	5'6" x 10'1"	55 sq. ft	No
25	Breakfast Nook	14'5" x 8'4"	120 sq. ft	Yes
26	Bedroom	12'0" x 11'9"	141 sq. ft	Yes
27	Bedroom	11'8" x 14'10"	174 sq. ft	Yes
28	Bath	2'11" x 6'0"	17 sq. ft	Yes

26475 North 106th Way, Troon Village, Scottsdale, Maricopa County, Arizona, United States, 85255

1 Floor 1 - W.I.C.



Dimensions: 6'10" x 5'2"
Area: 35 sq. ft
Counted as living area: Yes

Heated: Yes
Finished: Yes
Enclosed: Yes
Contiguous: Yes
Permitted: Yes
Wet space: No
Addition: No
Conversion: No

2 Floor 1 - Bedroom

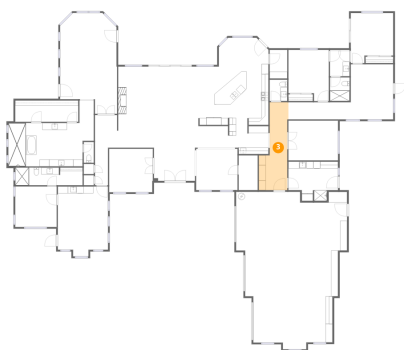


Dimensions: 12'4" x 14'6"
Area: 178 sq. ft
Counted as living area: Yes

Heated: Yes
Finished: Yes
Enclosed: Yes
Contiguous: Yes
Permitted: Yes
Wet space: No
Addition: No
Conversion: No

26475 North 106th Way, Troon Village, Scottsdale, Maricopa County, Arizona, United States, 85255

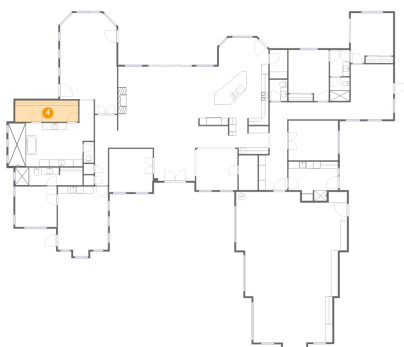
3 Floor 1 - Hall



Dimensions: 8'3" x 25'5"
Area: 209 sq. ft
Counted as living area: Yes

Heated: Yes
Finished: Yes
Enclosed: Yes
Contiguous: Yes
Permitted: Yes
Wet space: No
Addition: No
Conversion: No

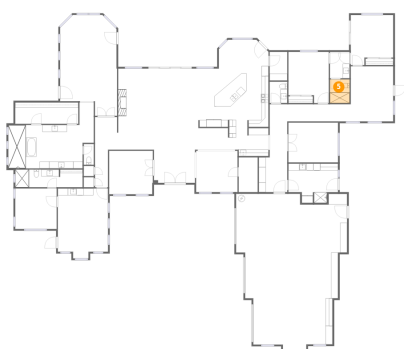
4 Floor 1 - W.I.C.



Dimensions: 18'3" x 6'2"
Area: 113 sq. ft
Counted as living area: Yes

Heated: Yes
Finished: Yes
Enclosed: Yes
Contiguous: Yes
Permitted: Yes
Wet space: No
Addition: No
Conversion: No

5 Floor 1 - Bath

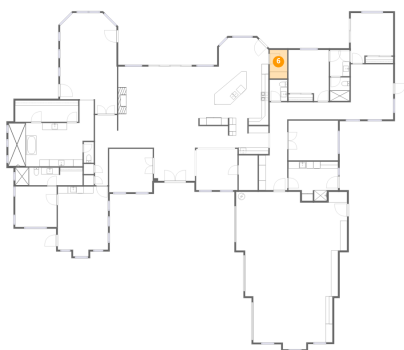


Dimensions: 5'8" x 6'10"
Area: 39 sq. ft
Counted as living area: Yes

Heated: Yes
Finished: Yes
Enclosed: Yes
Contiguous: Yes
Permitted: Yes
Wet space: Yes
Addition: No
Conversion: No

26475 North 106th Way, Troon Village, Scottsdale, Maricopa County, Arizona, United States, 85255

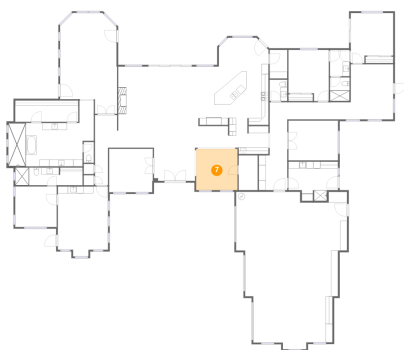
6 Floor 1 - Pantry



Dimensions: 5'1" x 8'4"
Area: 42 sq. ft
Counted as living area: Yes

Heated: Yes
Finished: Yes
Enclosed: Yes
Contiguous: Yes
Permitted: Yes
Wet space: No
Addition: No
Conversion: No

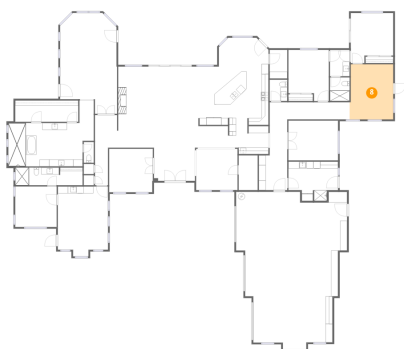
7 Floor 1 - Dining Area



Dimensions: 12'0" x 11'11"
Area: 143 sq. ft
Counted as living area: Yes

Heated: Yes
Finished: Yes
Enclosed: Yes
Contiguous: Yes
Permitted: Yes
Wet space: No
Addition: No
Conversion: No

8 Floor 1 - Gym

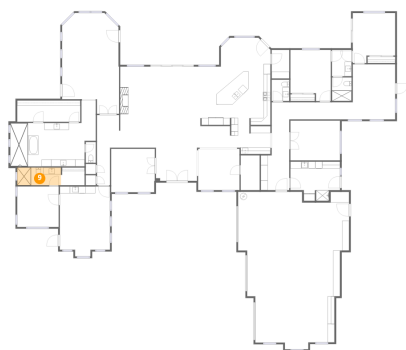


Dimensions: 12'8" x 16'0"
Area: 202 sq. ft
Counted as living area: Yes

Heated: Yes
Finished: Yes
Enclosed: Yes
Contiguous: Yes
Permitted: Yes
Wet space: No
Addition: No
Conversion: No

26475 North 106th Way, Troon Village, Scottsdale, Maricopa County, Arizona, United States, 85255

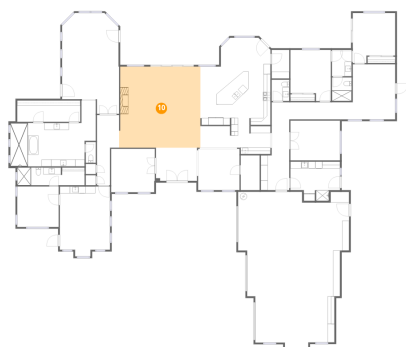
9 Floor 1 - Bath



Dimensions: 12'8" x 5'2"
Area: 65 sq. ft
Counted as living area: Yes

Heated: Yes
Finished: Yes
Enclosed: Yes
Contiguous: Yes
Permitted: Yes
Wet space: Yes
Addition: No
Conversion: No

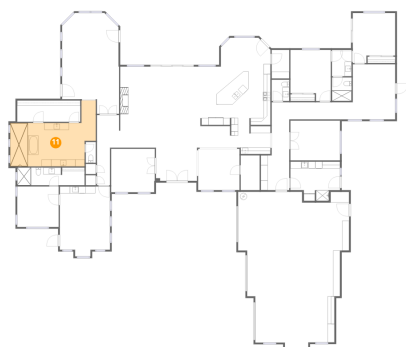
10 Floor 1 - Living Room



Dimensions: 23'7" x 23'6"
Area: 554 sq. ft
Counted as living area: Yes

Heated: Yes
Finished: Yes
Enclosed: Yes
Contiguous: Yes
Permitted: Yes
Wet space: No
Addition: No
Conversion: No

11 Floor 1 - Primary Bath

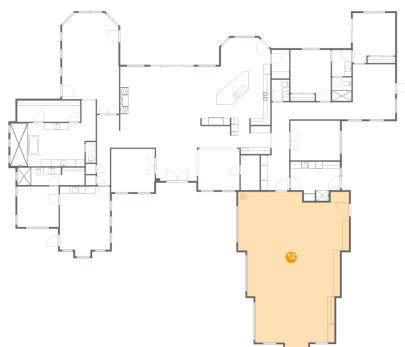


Dimensions: 24'10" x 19'1"
Area: 474 sq. ft
Counted as living area: Yes

Heated: Yes
Finished: Yes
Enclosed: Yes
Contiguous: Yes
Permitted: Yes
Wet space: Yes
Addition: No
Conversion: No

26475 North 106th Way, Troon Village, Scottsdale, Maricopa County, Arizona, United States, 85255

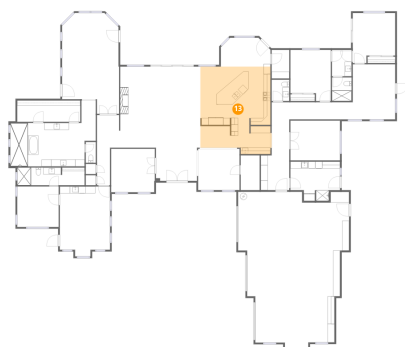
12 Floor 1 - Garage



Dimensions: 32'2" x 45'8"
Area: 1468 sq. ft
Counted as living area: No

Heated: No
Finished: No
Enclosed: Yes
Contiguous: Yes
Permitted: Yes
Wet space: No
Addition: No
Conversion: No

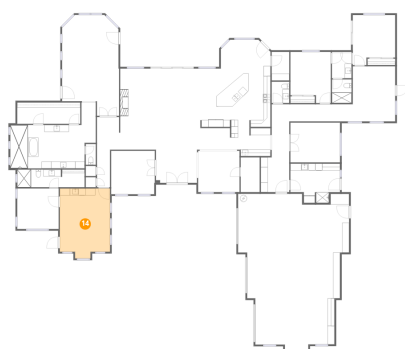
13 Floor 1 - Kitchen



Dimensions: 20'4" x 25'4"
Area: 516 sq. ft
Counted as living area: Yes

Heated: Yes
Finished: Yes
Enclosed: Yes
Contiguous: Yes
Permitted: Yes
Wet space: No
Addition: No
Conversion: No

14 Floor 1 - Sitting Room

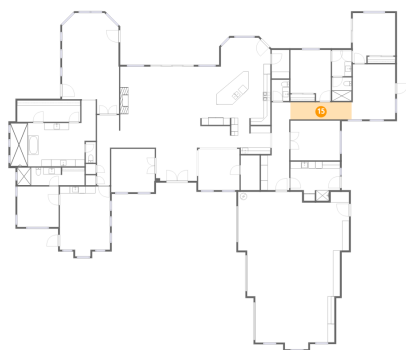


Dimensions: 14'7" x 20'3"
Area: 295 sq. ft
Counted as living area: Yes

Heated: Yes
Finished: Yes
Enclosed: Yes
Contiguous: Yes
Permitted: Yes
Wet space: No
Addition: No
Conversion: No

26475 North 106th Way, Troon Village, Scottsdale, Maricopa County, Arizona, United States, 85255

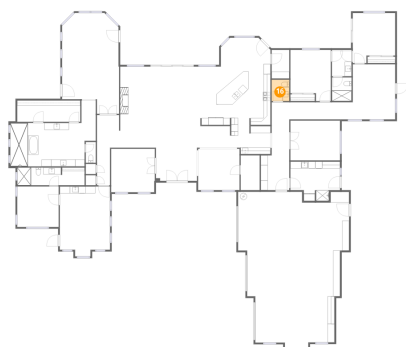
15 Floor 1 - Hall



Dimensions: 17'9" x 5'0"
Area: 88 sq. ft
Counted as living area: Yes

Heated: Yes
Finished: Yes
Enclosed: Yes
Contiguous: Yes
Permitted: Yes
Wet space: No
Addition: No
Conversion: No

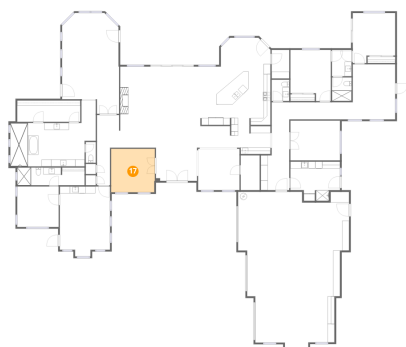
16 Floor 1 - Bath



Dimensions: 5'1" x 6'2"
Area: 32 sq. ft
Counted as living area: Yes

Heated: Yes
Finished: Yes
Enclosed: Yes
Contiguous: Yes
Permitted: Yes
Wet space: Yes
Addition: No
Conversion: No

17 Floor 1 - Office

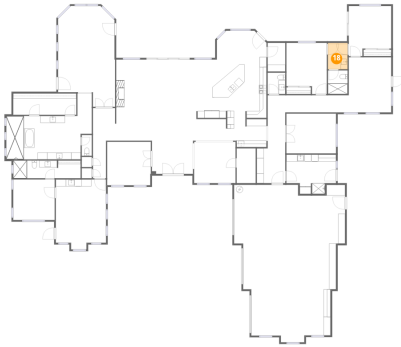


Dimensions: 12'8" x 12'7"
Area: 159 sq. ft
Counted as living area: Yes

Heated: Yes
Finished: Yes
Enclosed: Yes
Contiguous: Yes
Permitted: Yes
Wet space: No
Addition: No
Conversion: No

26475 North 106th Way, Troon Village, Scottsdale, Maricopa County, Arizona, United States, 85255

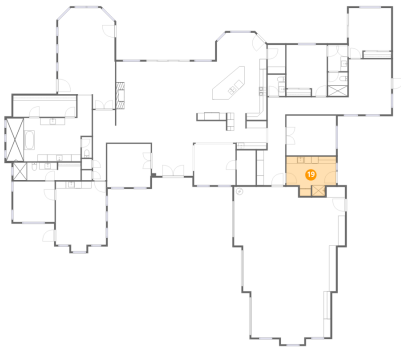
18 Floor 1 - Bath



Dimensions: 5'8" x 7'8"
Area: 44 sq. ft
Counted as living area: Yes

Heated: Yes
Finished: Yes
Enclosed: Yes
Contiguous: Yes
Permitted: Yes
Wet space: Yes
Addition: No
Conversion: No

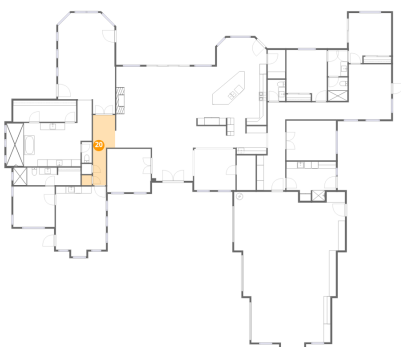
19 Floor 1 - Laundry



Dimensions: 14'5" x 11'5"
Area: 164 sq. ft
Counted as living area: Yes

Heated: Yes
Finished: Yes
Enclosed: Yes
Contiguous: Yes
Permitted: Yes
Wet space: No
Addition: No
Conversion: No

20 Floor 1 - Hall

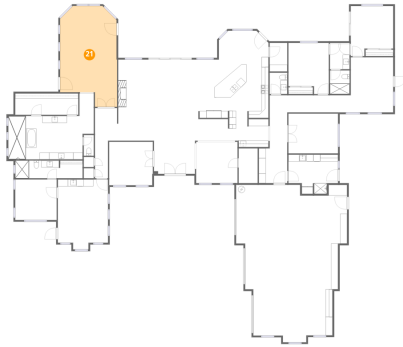


Dimensions: 7'0" x 20'4"
Area: 143 sq. ft
Counted as living area: Yes

Heated: Yes
Finished: Yes
Enclosed: Yes
Contiguous: Yes
Permitted: Yes
Wet space: No
Addition: No
Conversion: No

26475 North 106th Way, Troon Village, Scottsdale, Maricopa County, Arizona, United States, 85255

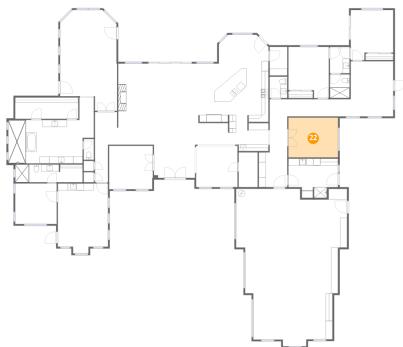
21 Floor 1 - Primary Bedroom



Dimensions: 16'6" x 29'3"
Area: 484 sq. ft
Counted as living area: Yes

Heated: Yes
Finished: Yes
Enclosed: Yes
Contiguous: Yes
Permitted: Yes
Wet space: No
Addition: No
Conversion: No

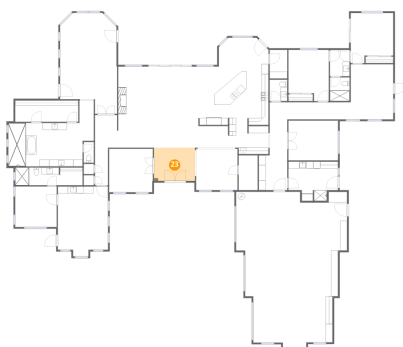
22 Floor 1 - Room



Dimensions: 14'5" x 11'7"
Area: 166 sq. ft
Counted as living area: Yes

Heated: Yes
Finished: Yes
Enclosed: Yes
Contiguous: Yes
Permitted: Yes
Wet space: No
Addition: No
Conversion: No

23 Floor 1 - Foyer

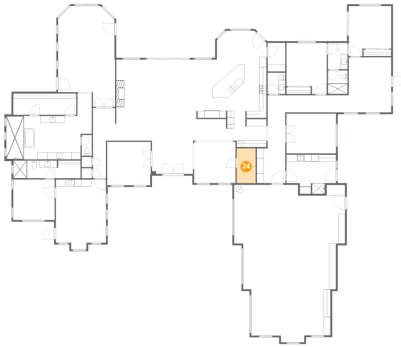


Dimensions: 11'10" x 9'7"
Area: 114 sq. ft
Counted as living area: Yes

Heated: Yes
Finished: Yes
Enclosed: Yes
Contiguous: Yes
Permitted: Yes
Wet space: No
Addition: No
Conversion: No

26475 North 106th Way, Troon Village, Scottsdale, Maricopa County, Arizona, United States, 85255

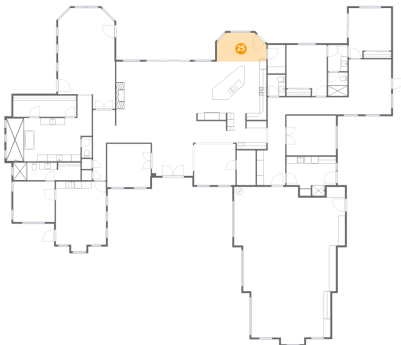
24 Floor 1 - Wine Cellar



Dimensions: 5'6" x 10'1"
Area: 55 sq. ft
Counted as living area: No

Heated: No
Finished: No
Enclosed: Yes
Contiguous: Yes
Permitted: Yes
Wet space: No
Addition: No
Conversion: No

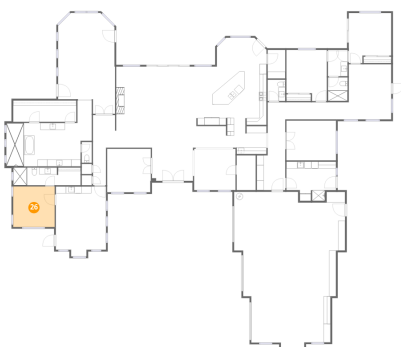
25 Floor 1 - Breakfast Nook



Dimensions: 14'5" x 8'4"
Area: 120 sq. ft
Counted as living area: Yes

Heated: Yes
Finished: Yes
Enclosed: Yes
Contiguous: Yes
Permitted: Yes
Wet space: No
Addition: No
Conversion: No

26 Floor 1 - Bedroom

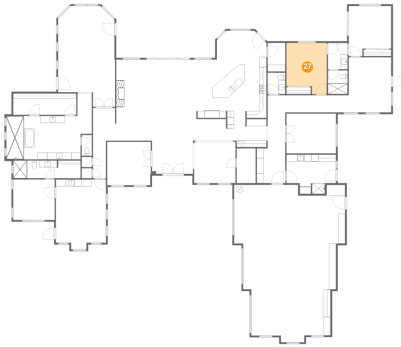


Dimensions: 12'0" x 11'9"
Area: 141 sq. ft
Counted as living area: Yes

Heated: Yes
Finished: Yes
Enclosed: Yes
Contiguous: Yes
Permitted: Yes
Wet space: No
Addition: No
Conversion: No

26475 North 106th Way, Troon Village, Scottsdale, Maricopa County, Arizona, United States, 85255

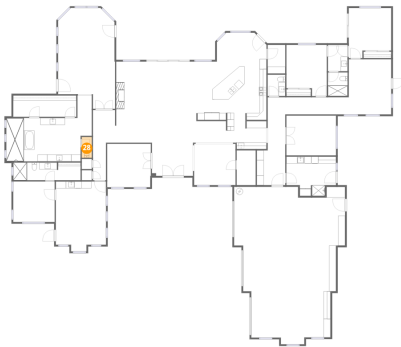
27 Floor 1 - Bedroom



Dimensions: 11'8" x 14'10"
Area: 174 sq. ft
Counted as living area: Yes

Heated: Yes
Finished: Yes
Enclosed: Yes
Contiguous: Yes
Permitted: Yes
Wet space: No
Addition: No
Conversion: No

28 Floor 1 - Bath



Dimensions: 2'11" x 6'0"
Area: 17 sq. ft
Counted as living area: Yes

Heated: Yes
Finished: Yes
Enclosed: Yes
Contiguous: Yes
Permitted: Yes
Wet space: No
Addition: No
Conversion: No