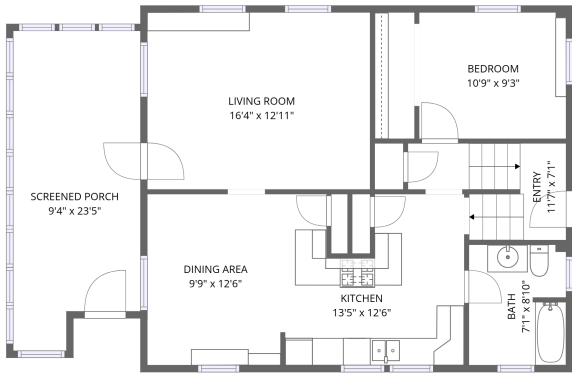
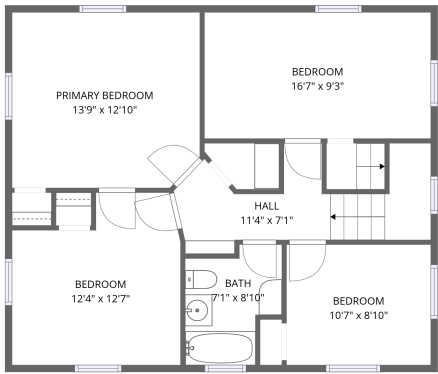


Home report

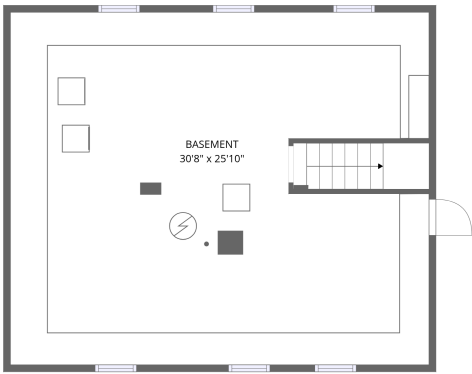
813 East Jefferson Avenue, La Porte, LaPorte County, Indiana,
United States, 46350



FLOOR 2



FLOOR 3



FLOOR 1

Total Area: 1623 sq. ft

Below Ground: 41 sq. ft, Floor 2: 791 sq. ft, Floor 3: 791 sq. ft

Excluded: Basement 749 sq. ft, Screened porch 202 sq. ft, Walls: 196 sq. ft

Property summary

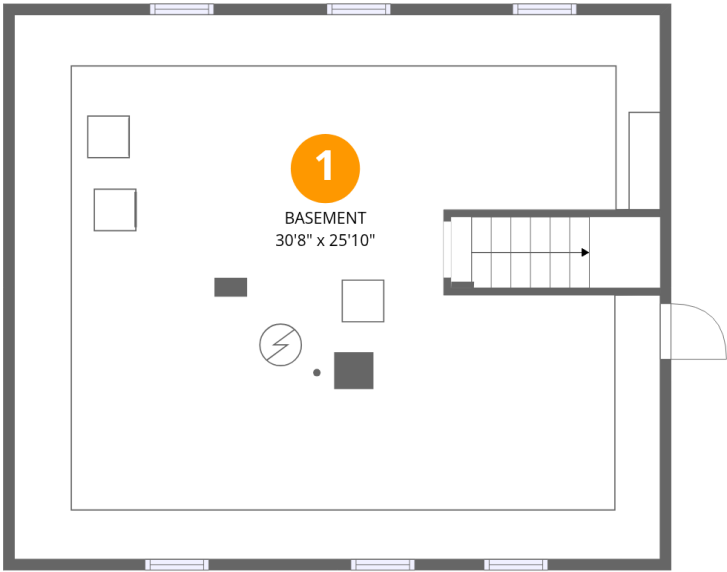
 **3** Floors

 **5** Bedrooms

 **2** Bathrooms

Home report

813 East Jefferson Avenue, La Porte, LaPorte County, Indiana,
United States, 46350



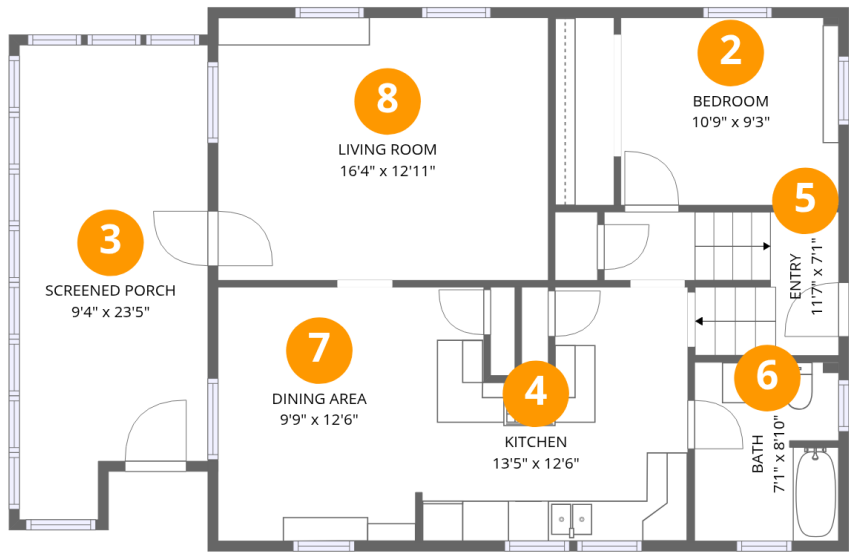
Room dimensions

Floor 1 Below ground Total:41sqft Excluded: 749sqft

#		Max Dimensions	sqft	Included
1	Basement	30'8" x 25'10"	749 sq. ft	No

Home report

813 East Jefferson Avenue, La Porte, LaPorte County, Indiana,
United States, 46350



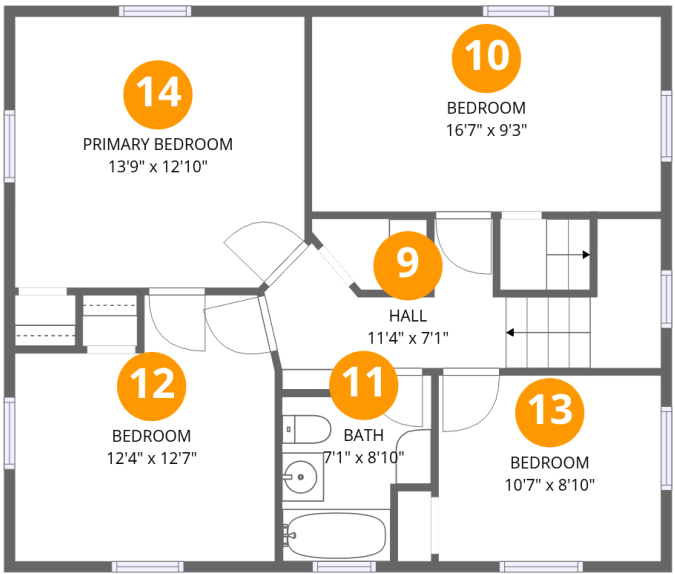
Room dimensions

Floor 2 Total:791sqft Excluded: 202sqft

#		Max Dimensions	sqft	Included
2	Bedroom	10'9" x 9'3"	99 sq. ft	Yes
3	Screened Porch	9'4" x 23'5"	202 sq. ft	No
4	Kitchen	13'5" x 12'6"	151 sq. ft	Yes
5	Entry	11'7" x 7'1"	64 sq. ft	Yes
6	Bath	7'1" x 8'10"	62 sq. ft	Yes
7	Dining Area	9'9" x 12'6"	122 sq. ft	Yes
8	Living Room	16'4" x 12'11"	211 sq. ft	Yes

Home report

813 East Jefferson Avenue, La Porte, LaPorte County, Indiana,
United States, 46350



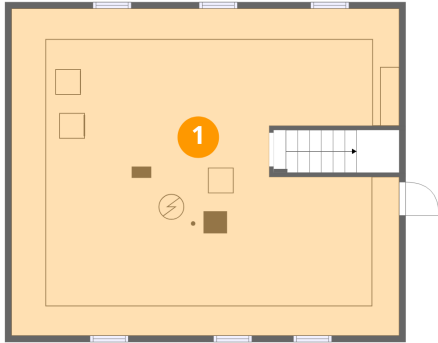
Room dimensions

Floor 3 Total:791sqft Excluded: 0sqft

#		Max Dimensions	sqft	Included
9	Hall	11'4" x 7'1"	72 sq. ft	Yes
10	Bedroom	16'7" x 9'3"	153 sq. ft	Yes
11	Bath	7'1" x 8'10"	51 sq. ft	Yes
12	Bedroom	12'4" x 12'7"	137 sq. ft	Yes
13	Bedroom	10'7" x 8'10"	93 sq. ft	Yes
14	Primary Bedroom	13'9" x 12'10"	174 sq. ft	Yes

813 East Jefferson Avenue, La Porte, LaPorte County, Indiana,
United States, 46350

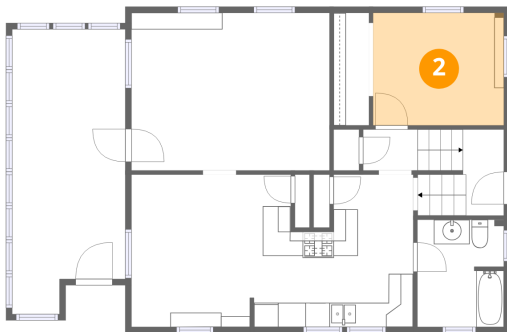
1 Floor 1 - Basement



Max Dimensions: 30'8" x
25'10"
Calculated Area: 749 sq. ft
Included: No

Heated: Yes
Finished: No
Enclosed: Yes
Contiguous:
Yes
Permitted: Yes
Wet space: No
Addition: No
Conversion: No

2 Floor 2 - Bedroom

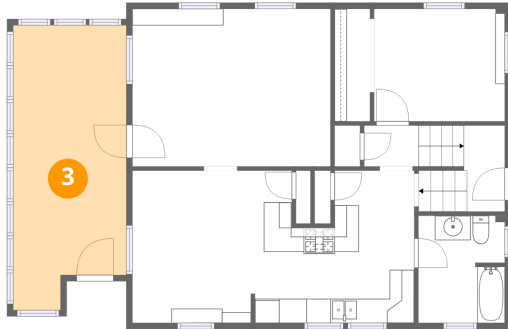


Max Dimensions: 10'9" x
9'3"
Calculated Area: 99 sq. ft
Included: Yes

Heated: Yes
Finished: Yes
Enclosed: Yes
Contiguous:
Yes
Permitted: Yes
Wet space: No
Addition: No
Conversion: No

813 East Jefferson Avenue, La Porte, LaPorte County, Indiana,
United States, 46350

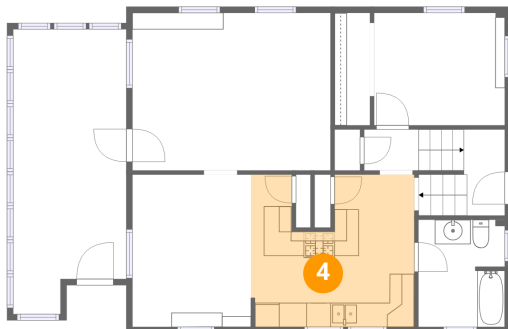
3 Floor 2 - Screened Porch



Max Dimensions: 9'4" x 23'5"
Calculated Area: 202 sq. ft
Included: No

Heated: No
Finished: No
Enclosed: No
Contiguous: Yes
Permitted: Yes
Wet space: No
Addition: No
Conversion: No

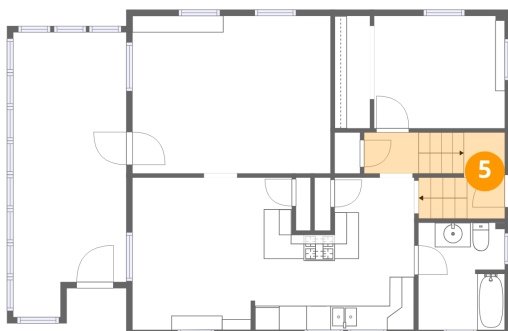
4 Floor 2 - Kitchen



Max Dimensions: 13'5" x 12'6"
Calculated Area: 151 sq. ft
Included: Yes

Heated: Yes
Finished: Yes
Enclosed: Yes
Contiguous: Yes
Permitted: Yes
Wet space: No
Addition: No
Conversion: No

5 Floor 2 - Entry

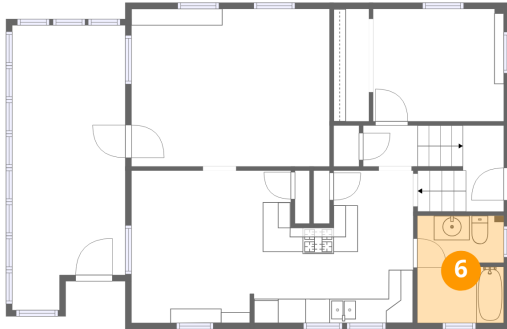


Max Dimensions: 11'7" x 7'1"
Calculated Area: 64 sq. ft
Included: Yes

Heated: Yes
Finished: Yes
Enclosed: Yes
Contiguous: Yes
Permitted: Yes
Wet space: No
Addition: No
Conversion: No

813 East Jefferson Avenue, La Porte, LaPorte County, Indiana,
United States, 46350

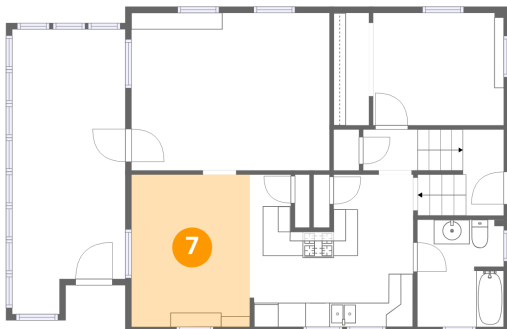
6 Floor 2 - Bath



Max Dimensions: 7'1" x 8'10"
Calculated Area: 62 sq. ft
Included: Yes

Heated: Yes
Finished: Yes
Enclosed: Yes
Contiguous: Yes
Permitted: Yes
Wet space: Yes
Addition: No
Conversion: No

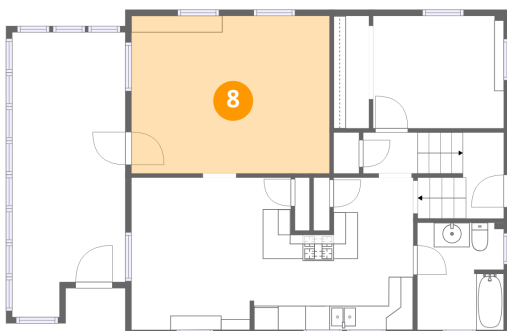
7 Floor 2 - Dining Area



Max Dimensions: 9'9" x 12'6"
Calculated Area: 122 sq. ft
Included: Yes

Heated: Yes
Finished: Yes
Enclosed: Yes
Contiguous: Yes
Permitted: Yes
Wet space: No
Addition: No
Conversion: No

8 Floor 2 - Living Room

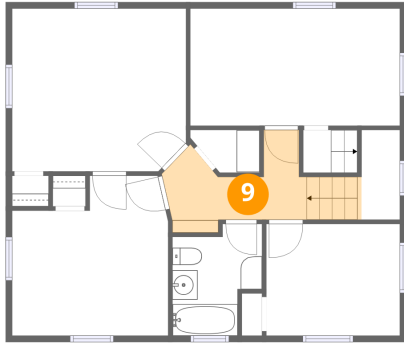


Max Dimensions: 16'4" x 12'11"
Calculated Area: 211 sq. ft
Included: Yes

Heated: Yes
Finished: Yes
Enclosed: Yes
Contiguous: Yes
Permitted: Yes
Wet space: No
Addition: No
Conversion: No

813 East Jefferson Avenue, La Porte, LaPorte County, Indiana,
United States, 46350

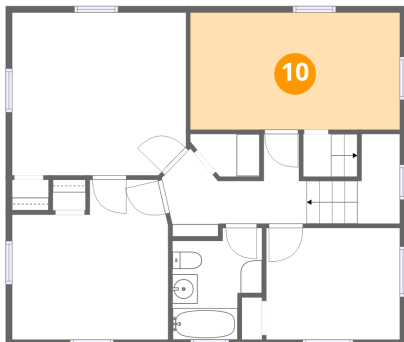
9 Floor 3 - Hall



Max Dimensions: 11'4" x 7'1"
Calculated Area: 72 sq. ft
Included: Yes

Heated: Yes
Finished: Yes
Enclosed: Yes
Contiguous: Yes
Permitted: Yes
Wet space: No
Addition: No
Conversion: No

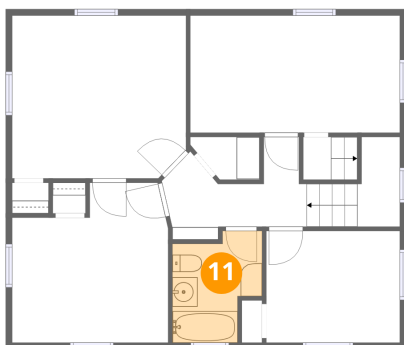
10 Floor 3 - Bedroom



Max Dimensions: 16'7" x 9'3"
Calculated Area: 153 sq. ft
Included: Yes

Heated: Yes
Finished: Yes
Enclosed: Yes
Contiguous: Yes
Permitted: Yes
Wet space: No
Addition: No
Conversion: No

11 Floor 3 - Bath

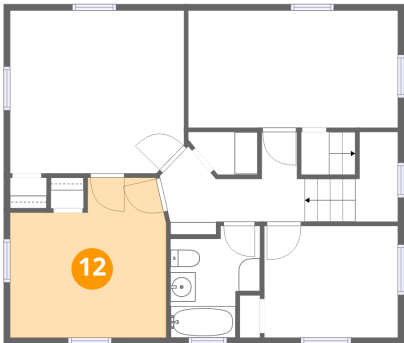


Max Dimensions: 7'1" x 8'10"
Calculated Area: 51 sq. ft
Included: Yes

Heated: Yes
Finished: Yes
Enclosed: Yes
Contiguous: Yes
Permitted: Yes
Wet space: Yes
Addition: No
Conversion: No

813 East Jefferson Avenue, La Porte, LaPorte County, Indiana,
United States, 46350

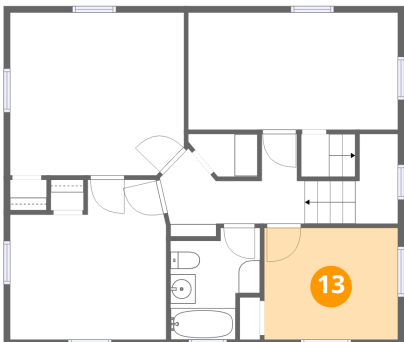
12 Floor 3 - Bedroom



Max Dimensions: 12'4" x 12'7"
Calculated Area: 137 sq. ft
Included: Yes

Heated: Yes
Finished: Yes
Enclosed: Yes
Contiguous: Yes
Permitted: Yes
Wet space: No
Addition: No
Conversion: No

13 Floor 3 - Bedroom



Max Dimensions: 10'7" x 8'10"
Calculated Area: 93 sq. ft
Included: Yes

Heated: Yes
Finished: Yes
Enclosed: Yes
Contiguous: Yes
Permitted: Yes
Wet space: No
Addition: No
Conversion: No

14 Floor 3 - Primary Bedroom



Max Dimensions: 13'9" x 12'10"
Calculated Area: 174 sq. ft
Included: Yes

Heated: Yes
Finished: Yes
Enclosed: Yes
Contiguous: Yes
Permitted: Yes
Wet space: No
Addition: No
Conversion: No