

## Home report

111 Wellie Hill Place, Erin Shades, Short Pump, Glen Allen,  
Henrico County, Virginia, United States, 23060, B



**Total Area: 2107 sq. ft**

Basement: 198 sq. ft, Ground Floor: 1068 sq. ft, 1st Floor: 841 sq. ft

Excluded: Garage 208 sq. ft, Open to below 22 sq. ft, Balcony 220 sq. ft, Walls: 169 sq. ft

## Property summary


 **3** Floors

 **3** Bedrooms

 **2** Bathrooms

Home report

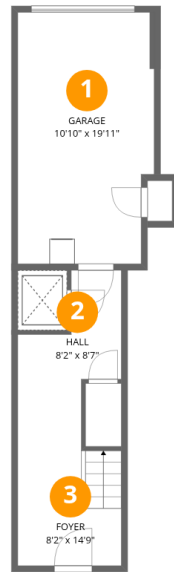
**111 Wellie Hill Place, Erin Shades, Short Pump, Glen Allen,  
Henrico County, Virginia, United States, 23060, B**

 **1**  
Half baths

 **1**  
Garages

Home report

111 Wellie Hill Place, Erin Shades, Short Pump, Glen Allen,  
Henrico County, Virginia, United States, 23060, B



## Room dimensions

Floor 1 Below grade

Total:198sqft

Excluded: 208sqft

#		Dimensions	sqft	Counted as living area
1	Garage	10'10" x 19'11"	215 sq. ft	No
2	Hall	8'2" x 8'7"	70 sq. ft	Yes
3	Foyer	8'2" x 14'9"	120 sq. ft	Yes

Home report

111 Wellie Hill Place, Erin Shades, Short Pump, Glen Allen, Henrico County, Virginia, United States, 23060, B



## Room dimensions

Floor 2

Total:1068sqft Excluded: 11sqft

#		Dimensions	sqft	Counted as living area
4	Bath	8'2" x 5'2"	42 sq. ft	Yes
5	Bath	8'2" x 9'10"	80 sq. ft	Yes
6	Bedroom	11'3" x 11'10"	134 sq. ft	Yes
7	Bedroom	10'10" x 14'3"	154 sq. ft	Yes
8	Laundry	9'8" x 6'5"	62 sq. ft	Yes
9	Hall	12'5" x 7'10"	98 sq. ft	Yes
10	Utility	6'6" x 3'8"	24 sq. ft	Yes
11	Open To Below	1'10" x 6'1"	11 sq. ft	No
12	W.I.C.	9'8" x 8'6"	82 sq. ft	Yes
13	Hall	7'0" x 8'2"	57 sq. ft	Yes
14	Primary Bedroom	13'10" x 20'0"	277 sq. ft	Yes

## Home report

111 Wellie Hill Place, Erin Shades, Short Pump, Glen Allen,  
Henrico County, Virginia, United States, 23060, B



## Room dimensions

Floor 3

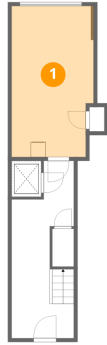
Total:841sqft Excluded: 231sqft

#		Dimensions	sqft	Counted as living area
15	Balcony	22'5" x 9'10"	220 sq. ft	No
16	WC	8'2" x 4'8"	38 sq. ft	Yes
17	Hall	8'6" x 7'10"	67 sq. ft	Yes
18	Open To Below	1'10" x 6'1"	11 sq. ft	No
19	Dining Area	10'11" x 15'1"	165 sq. ft	Yes
20	Kitchen	11'5" x 15'1"	173 sq. ft	Yes
21	Living Room	13'10" x 22'11"	318 sq. ft	Yes

111 Wellie Hill Place, Erin Shades, Short Pump, Glen Allen,  
Henrico County, Virginia, United States, 23060, B

## 1 Floor 1 - Garage

---



Dimensions: 10'10" x 19'11"  
Area: 215 sq. ft  
Counted as living area: No

Heated: No  
Finished: No  
Enclosed: Yes  
Contiguous: Yes  
Permitted: Yes  
Wet space: No  
Addition: No  
Conversion: No

## 2 Floor 1 - Hall

---



Dimensions: 8'2" x 8'7"  
Area: 70 sq. ft  
Counted as living area: Yes

Heated: Yes  
Finished: Yes  
Enclosed: Yes  
Contiguous: Yes  
Permitted: Yes  
Wet space: No  
Addition: No  
Conversion: No

111 Wellie Hill Place, Erin Shades, Short Pump, Glen Allen,  
Henrico County, Virginia, United States, 23060, B

**3** Floor 1 - Foyer



Dimensions: 8'2" x 14'9"  
Area: 120 sq. ft  
Counted as living area: Yes

Heated: Yes  
Finished: Yes  
Enclosed: Yes  
Contiguous: Yes  
Permitted: Yes  
Wet space: No  
Addition: No  
Conversion: No

**4** Floor 2 - Bath



Dimensions: 8'2" x 5'2"  
Area: 42 sq. ft  
Counted as living area: Yes

Heated: Yes  
Finished: Yes  
Enclosed: Yes  
Contiguous: Yes  
Permitted: Yes  
Wet space: Yes  
Addition: No  
Conversion: No

**5** Floor 2 - Bath

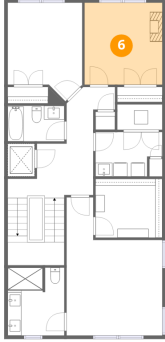


Dimensions: 8'2" x 9'10"  
Area: 80 sq. ft  
Counted as living area: Yes

Heated: Yes  
Finished: Yes  
Enclosed: Yes  
Contiguous: Yes  
Permitted: Yes  
Wet space: Yes  
Addition: No  
Conversion: No

111 Wellie Hill Place, Erin Shades, Short Pump, Glen Allen,  
Henrico County, Virginia, United States, 23060, B

**6** Floor 2 - Bedroom



Dimensions: 11'3" x 11'10"  
Area: 134 sq. ft  
Counted as living area: Yes

Heated: Yes  
Finished: Yes  
Enclosed: Yes  
Contiguous: Yes  
Permitted: Yes  
Wet space: No  
Addition: No  
Conversion: No

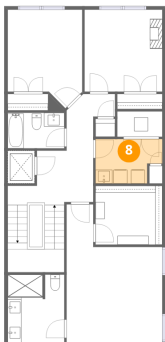
**7** Floor 2 - Bedroom



Dimensions: 10'10" x 14'3"  
Area: 154 sq. ft  
Counted as living area: Yes

Heated: Yes  
Finished: Yes  
Enclosed: Yes  
Contiguous: Yes  
Permitted: Yes  
Wet space: No  
Addition: No  
Conversion: No

**8** Floor 2 - Laundry



Dimensions: 9'8" x 6'5"  
Area: 62 sq. ft  
Counted as living area: Yes

Heated: Yes  
Finished: Yes  
Enclosed: Yes  
Contiguous: Yes  
Permitted: Yes  
Wet space: No  
Addition: No  
Conversion: No

111 Wellie Hill Place, Erin Shades, Short Pump, Glen Allen,  
Henrico County, Virginia, United States, 23060, B

**9** Floor 2 - Hall



Dimensions: 12'5" x 7'10"  
Area: 98 sq. ft  
Counted as living area: Yes

Heated: Yes  
Finished: Yes  
Enclosed: Yes  
Contiguous: Yes  
Permitted: Yes  
Wet space: No  
Addition: No  
Conversion: No

**10** Floor 2 - Utility



Dimensions: 6'6" x 3'8"  
Area: 24 sq. ft  
Counted as living area: Yes

Heated: Yes  
Finished: Yes  
Enclosed: Yes  
Contiguous: Yes  
Permitted: Yes  
Wet space: No  
Addition: No  
Conversion: No

**11** Floor 2 - Open To Below



Dimensions: 1'10" x 6'1"  
Area: 11 sq. ft  
Counted as living area: No

Heated: No  
Finished: No  
Enclosed: No  
Contiguous: Yes  
Permitted: No  
Wet space: No  
Addition: No  
Conversion: No

111 Wellie Hill Place, Erin Shades, Short Pump, Glen Allen,  
Henrico County, Virginia, United States, 23060, B

**12** Floor 2 - W.I.C.



Dimensions: 9'8" x 8'6"  
Area: 82 sq. ft  
Counted as living area: Yes

Heated: Yes  
Finished: Yes  
Enclosed: Yes  
Contiguous: Yes  
Permitted: Yes  
Wet space: No  
Addition: No  
Conversion: No

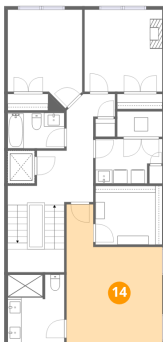
**13** Floor 2 - Hall



Dimensions: 7'0" x 8'2"  
Area: 57 sq. ft  
Counted as living area: Yes

Heated: Yes  
Finished: Yes  
Enclosed: Yes  
Contiguous: Yes  
Permitted: Yes  
Wet space: No  
Addition: No  
Conversion: No

**14** Floor 2 - Primary Bedroom



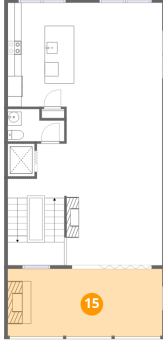
Dimensions: 13'10" x 20'0"  
Area: 277 sq. ft  
Counted as living area: Yes

Heated: Yes  
Finished: Yes  
Enclosed: Yes  
Contiguous: Yes  
Permitted: Yes  
Wet space: No  
Addition: No  
Conversion: No

111 Wellie Hill Place, Erin Shades, Short Pump, Glen Allen,  
Henrico County, Virginia, United States, 23060, B

**15** Floor 3 - Balcony

---

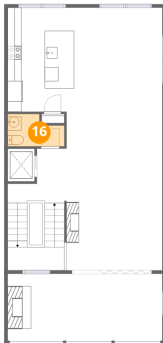


Dimensions: 22'5" x 9'10"  
Area: 220 sq. ft  
Counted as living area: No

Heated: No  
Finished: No  
Enclosed: No  
Contiguous: Yes  
Permitted: Yes  
Wet space: No  
Addition: No  
Conversion: No

**16** Floor 3 - WC

---



Dimensions: 8'2" x 4'8"  
Area: 38 sq. ft  
Counted as living area: Yes

Heated: Yes  
Finished: Yes  
Enclosed: Yes  
Contiguous: Yes  
Permitted: Yes  
Wet space: Yes  
Addition: No  
Conversion: No

**17** Floor 3 - Hall

---

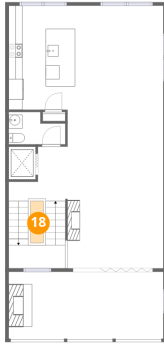


Dimensions: 8'6" x 7'10"  
Area: 67 sq. ft  
Counted as living area: Yes

Heated: Yes  
Finished: Yes  
Enclosed: Yes  
Contiguous: Yes  
Permitted: Yes  
Wet space: No  
Addition: No  
Conversion: No

111 Wellie Hill Place, Erin Shades, Short Pump, Glen Allen,  
Henrico County, Virginia, United States, 23060, B

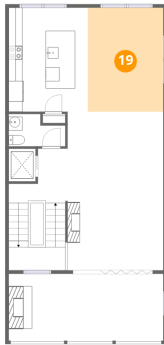
**18** Floor 3 - Open To Below



Dimensions: 1'10" x 6'1"  
Area: 11 sq. ft  
Counted as living area: No

Heated: No  
Finished: No  
Enclosed: No  
Contiguous: Yes  
Permitted: No  
Wet space: No  
Addition: No  
Conversion: No

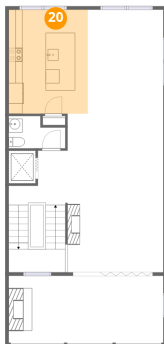
**19** Floor 3 - Dining Area



Dimensions: 10'11" x 15'1"  
Area: 165 sq. ft  
Counted as living area: Yes

Heated: Yes  
Finished: Yes  
Enclosed: Yes  
Contiguous: Yes  
Permitted: Yes  
Wet space: No  
Addition: No  
Conversion: No

**20** Floor 3 - Kitchen



Dimensions: 11'5" x 15'1"  
Area: 173 sq. ft  
Counted as living area: Yes

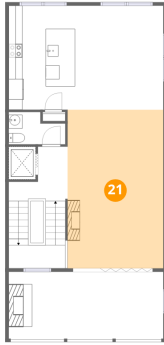
Heated: Yes  
Finished: Yes  
Enclosed: Yes  
Contiguous: Yes  
Permitted: Yes  
Wet space: No  
Addition: No  
Conversion: No

Home report

111 Wellie Hill Place, Erin Shades, Short Pump, Glen Allen,  
Henrico County, Virginia, United States, 23060, B

## 21 Floor 3 - Living Room

---



Dimensions: 13'10" x 22'11"  
Area: 318 sq. ft  
Counted as living area: Yes

Heated: Yes  
Finished: Yes  
Enclosed: Yes  
Contiguous: Yes  
Permitted: Yes  
Wet space: No  
Addition: No  
Conversion: No