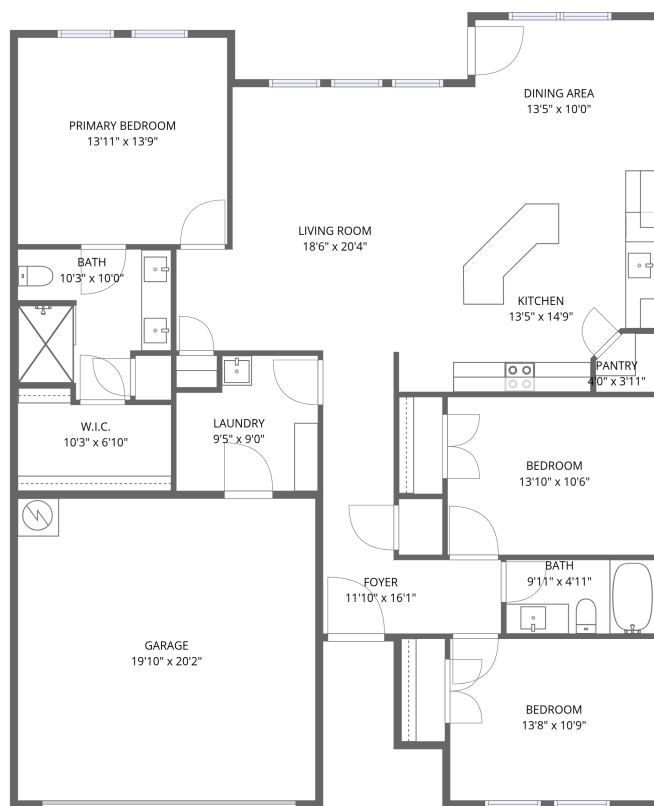


Home data report

2418 Beverly Drive, Canyon Creek, Granbury, Hood County, Texas, United States, 76048



1st floor

Total Area: 1629 sq. ft

1st Floor: 1629 sq. ft

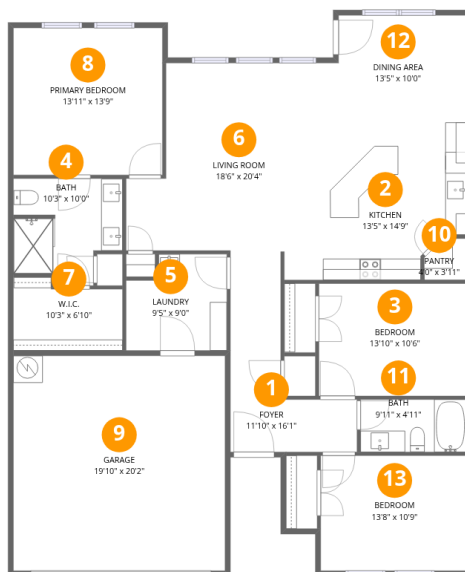
Excluded: Garage 399 sq. ft, Walls: 125 sq. ft

Property summary



Home data report

2418 Beverly Drive, Canyon Creek, Granbury, Hood County, Texas, United States, 76048



Room dimensions

Floor 1

Total:1629sqft Excluded: 399sqft

#		Dimensions	sqft	Counted as living area
1	Foyer	11'10" x 16'1"	191 sq. ft	Yes
2	Kitchen	13'5" x 14'9"	198 sq. ft	Yes
3	Bedroom	13'10" x 10'6"	145 sq. ft	Yes
4	Bath	10'3" x 10'0"	103 sq. ft	Yes
5	Laundry	9'5" x 9'0"	85 sq. ft	Yes
6	Living Room	18'6" x 20'4"	376 sq. ft	Yes
7	W.I.C.	10'3" x 6'10"	70 sq. ft	Yes
8	Primary Bedroom	13'11" x 13'9"	191 sq. ft	Yes
9	Garage	19'10" x 20'2"	399 sq. ft	No
10	Pantry	4'0" x 3'11"	15 sq. ft	Yes
11	Bath	9'11" x 4'11"	49 sq. ft	Yes

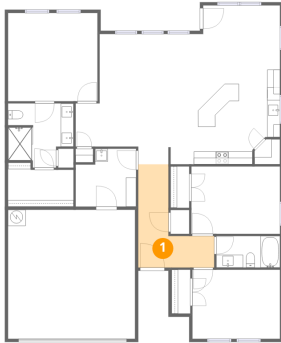
Home data report

**2418 Beverly Drive, Canyon Creek, Granbury, Hood County,
Texas, United States, 76048**

#		Dimensions	sqft	Counted as living area
12	Dining Area	13'5" x 10'0"	135 sq. ft	Yes
13	Bedroom	13'8" x 10'9"	148 sq. ft	Yes

2418 Beverly Drive, Canyon Creek, Granbury, Hood County, Texas, United States, 76048

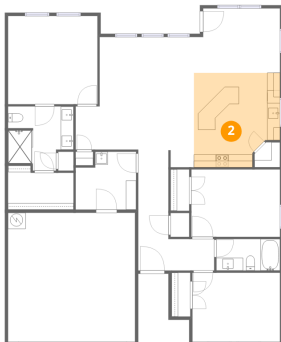
1 Floor 1 - Foyer



Dimensions: 11'10" x 16'1"
Area: 191 sq. ft
Counted as living area: Yes

Heated: Yes
Finished: Yes
Enclosed: Yes
Contiguous: Yes
Permitted: Yes
Wet space: No
Addition: No
Conversion: No

2 Floor 1 - Kitchen

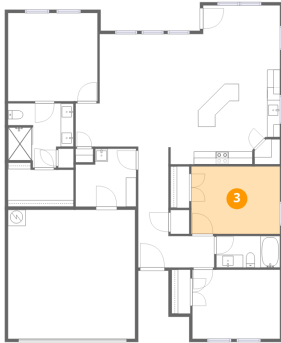


Dimensions: 13'5" x 14'9"
Area: 198 sq. ft
Counted as living area: Yes

Heated: Yes
Finished: Yes
Enclosed: Yes
Contiguous: Yes
Permitted: Yes
Wet space: No
Addition: No
Conversion: No

2418 Beverly Drive, Canyon Creek, Granbury, Hood County, Texas, United States, 76048

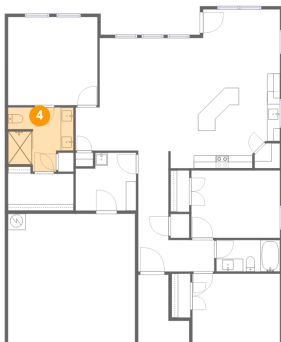
3 Floor 1 - Bedroom



Dimensions: 13'10" x 10'6"
Area: 145 sq. ft
Counted as living area: Yes

Heated: Yes
Finished: Yes
Enclosed: Yes
Contiguous: Yes
Permitted: Yes
Wet space: No
Addition: No
Conversion: No

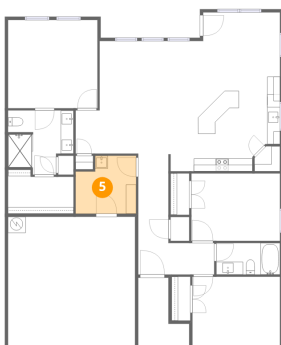
4 Floor 1 - Bath



Dimensions: 10'3" x 10'0"
Area: 103 sq. ft
Counted as living area: Yes

Heated: Yes
Finished: Yes
Enclosed: Yes
Contiguous: Yes
Permitted: Yes
Wet space: Yes
Addition: No
Conversion: No

5 Floor 1 - Laundry

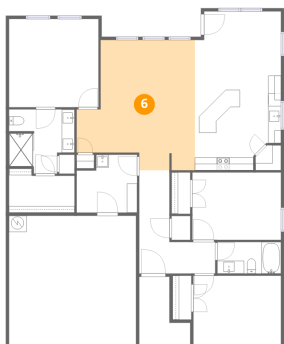


Dimensions: 9'5" x 9'0"
Area: 85 sq. ft
Counted as living area: Yes

Heated: Yes
Finished: Yes
Enclosed: Yes
Contiguous: Yes
Permitted: Yes
Wet space: No
Addition: No
Conversion: No

2418 Beverly Drive, Canyon Creek, Granbury, Hood County, Texas, United States, 76048

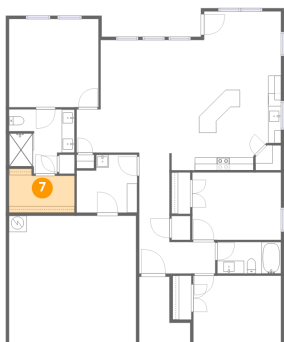
6 Floor 1 - Living Room



Dimensions: 18'6" x 20'4"
Area: 376 sq. ft
Counted as living area: Yes

Heated: Yes
Finished: Yes
Enclosed: Yes
Contiguous: Yes
Permitted: Yes
Wet space: No
Addition: No
Conversion: No

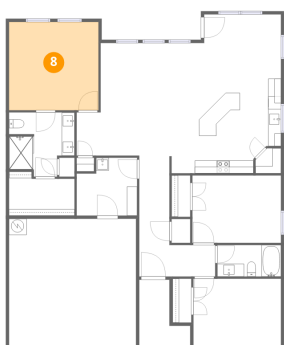
7 Floor 1 - W.I.C.



Dimensions: 10'3" x 6'10"
Area: 70 sq. ft
Counted as living area: Yes

Heated: Yes
Finished: Yes
Enclosed: Yes
Contiguous: Yes
Permitted: Yes
Wet space: No
Addition: No
Conversion: No

8 Floor 1 - Primary Bedroom

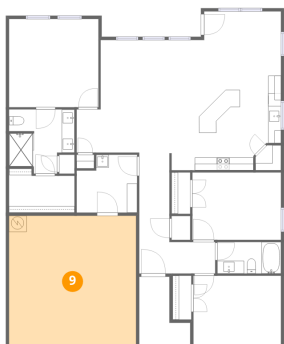


Dimensions: 13'11" x 13'9"
Area: 191 sq. ft
Counted as living area: Yes

Heated: Yes
Finished: Yes
Enclosed: Yes
Contiguous: Yes
Permitted: Yes
Wet space: No
Addition: No
Conversion: No

2418 Beverly Drive, Canyon Creek, Granbury, Hood County, Texas, United States, 76048

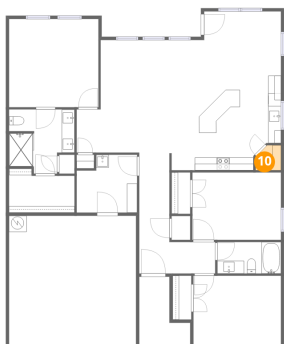
9 Floor 1 - Garage



Dimensions: 19'10" x 20'2"
Area: 399 sq. ft
Counted as living area: No

Heated: No
Finished: No
Enclosed: Yes
Contiguous: Yes
Permitted: Yes
Wet space: No
Addition: No
Conversion: No

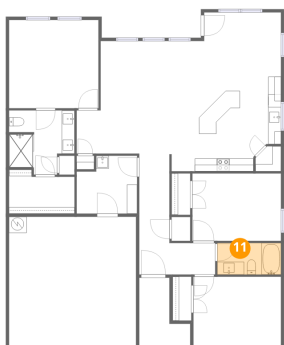
10 Floor 1 - Pantry



Dimensions: 4'0" x 3'11"
Area: 15 sq. ft
Counted as living area: Yes

Heated: Yes
Finished: Yes
Enclosed: Yes
Contiguous: Yes
Permitted: Yes
Wet space: No
Addition: No
Conversion: No

11 Floor 1 - Bath

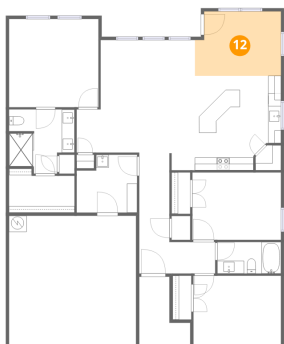


Dimensions: 9'11" x 4'11"
Area: 49 sq. ft
Counted as living area: Yes

Heated: Yes
Finished: Yes
Enclosed: Yes
Contiguous: Yes
Permitted: Yes
Wet space: Yes
Addition: No
Conversion: No

2418 Beverly Drive, Canyon Creek, Granbury, Hood County, Texas, United States, 76048

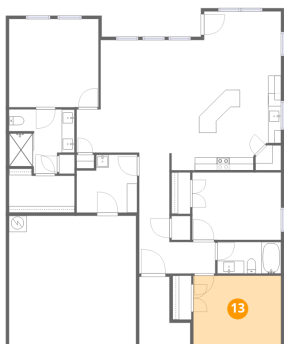
12 Floor 1 - Dining Area



Dimensions: 13'5" x 10'0"
Area: 135 sq. ft
Counted as living area: Yes

Heated: Yes
Finished: Yes
Enclosed: Yes
Contiguous: Yes
Permitted: Yes
Wet space: No
Addition: No
Conversion: No

13 Floor 1 - Bedroom



Dimensions: 13'8" x 10'9"
Area: 148 sq. ft
Counted as living area: Yes

Heated: Yes
Finished: Yes
Enclosed: Yes
Contiguous: Yes
Permitted: Yes
Wet space: No
Addition: No
Conversion: No