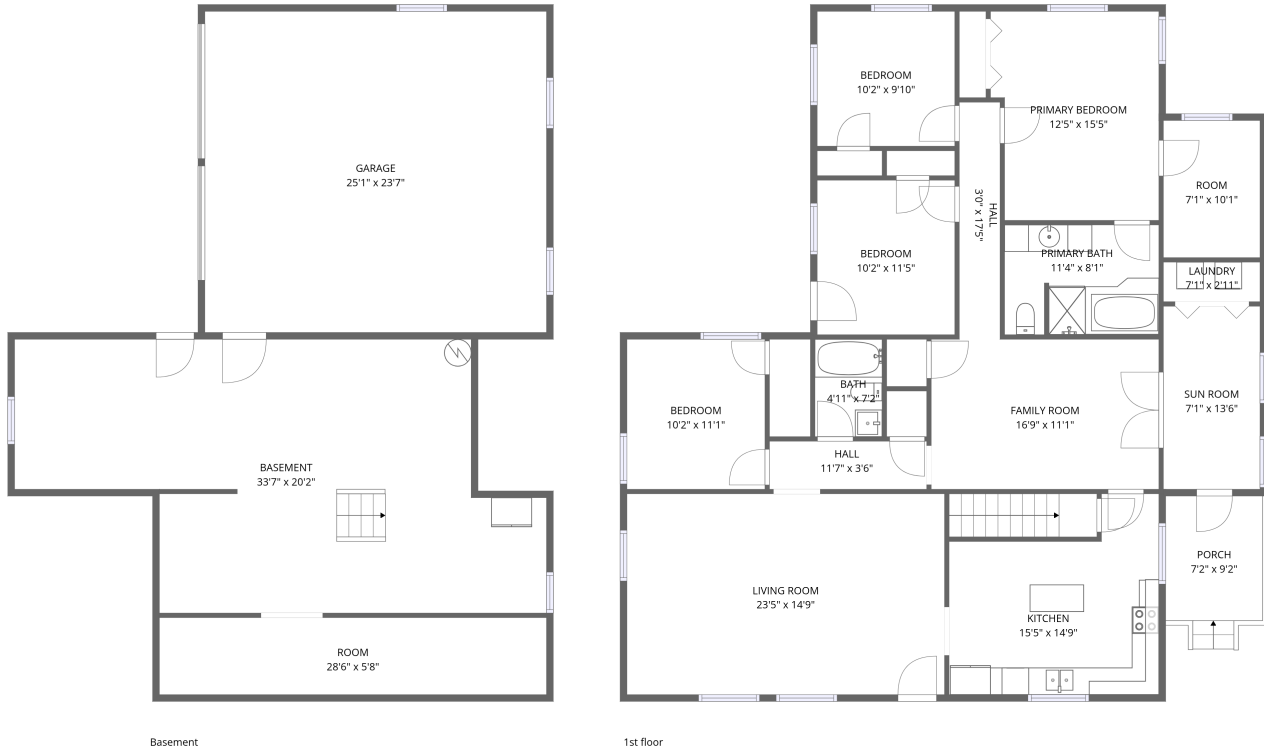


Home data report

4304 Woodlawn Pike, Knoxville, TN, US

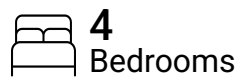


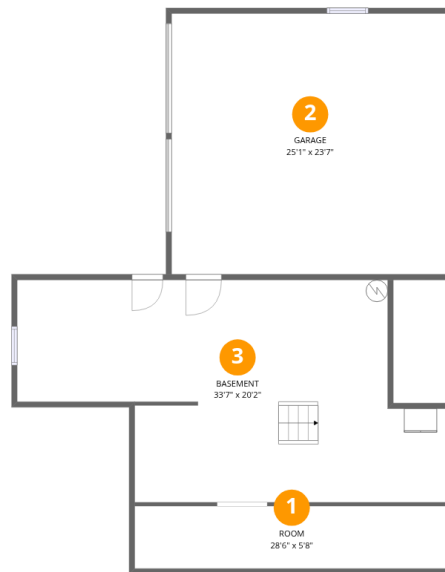
Total Area: 1835 sq. ft

Basement: 0 sq. ft, 1st Floor: 1835 sq. ft

Excluded: Room 171 sq. ft, Basement 628 sq. ft, Garage 595 sq. ft, Porch 72 sq. ft, Walls: 204 sq. ft

Property summary





Room dimensions

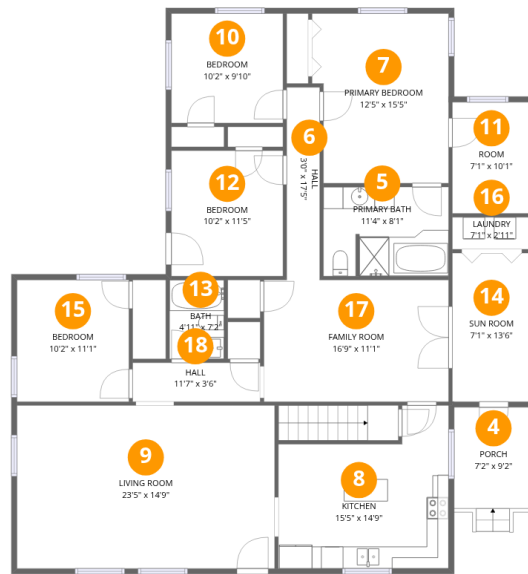
Floor 1 Below grade

Total: 0sqft

Excluded: 1394sqft

#		Dimensions	sqft	Counted as living area
1	Room	28'6" x 5'8"	162 sq. ft	No
2	Garage	25'1" x 23'7"	593 sq. ft	No
3	Basement	33'7" x 20'2"	677 sq. ft	No

4304 Woodlawn Pike, Knoxville, TN, US



Room dimensions

Floor 2

Total:1835sqft Excluded: 72sqft

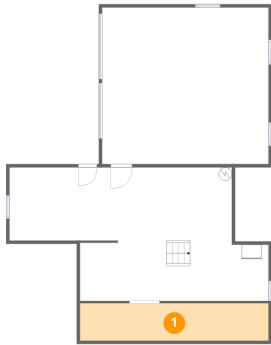
#		Dimensions	sqft	Counted as living area
4	Porch	7'2" x 9'2"	66 sq. ft	No
5	Primary Bath	11'4" x 8'1"	92 sq. ft	Yes
6	Hall	3'0" x 17'5"	52 sq. ft	Yes
7	Primary Bedroom	12'5" x 15'5"	191 sq. ft	Yes
8	Kitchen	15'5" x 14'9"	228 sq. ft	Yes
9	Living Room	23'5" x 14'9"	346 sq. ft	Yes
10	Bedroom	10'2" x 9'10"	100 sq. ft	Yes
11	Room	7'1" x 10'1"	72 sq. ft	Yes
12	Bedroom	10'2" x 11'5"	115 sq. ft	Yes
13	Bath	4'11" x 7'2"	36 sq. ft	Yes
14	Sun Room	7'1" x 13'6"	96 sq. ft	Yes

Home data report

4304 Woodlawn Pike, Knoxville, TN, US

#		Dimensions	sqft	Counted as living area
15	Bedroom	10'2" x 11'1"	112 sq. ft	Yes
16	Laundry	7'1" x 2'11"	21 sq. ft	Yes
17	Family Room	16'9" x 11'1"	185 sq. ft	Yes
18	Hall	11'7" x 3'6"	41 sq. ft	Yes

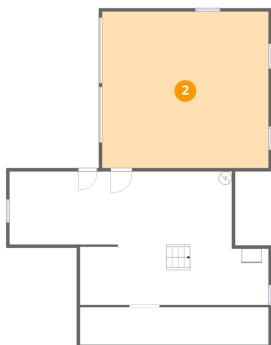
1 Floor 1 - Room



Dimensions: 28'6" x 5'8"
Area: 162 sq. ft
Counted as living area: No

Heated: Yes
Finished: No
Enclosed: Yes
Contiguous: Yes
Permitted: Yes
Wet space: No
Addition: No
Conversion: No

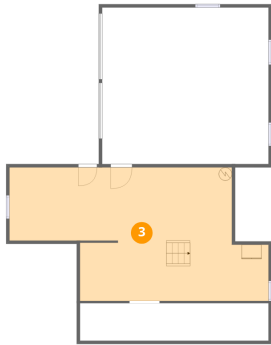
2 Floor 1 - Garage



Dimensions: 25'1" x 23'7"
Area: 593 sq. ft
Counted as living area: No

Heated: No
Finished: No
Enclosed: Yes
Contiguous: Yes
Permitted: Yes
Wet space: No
Addition: No
Conversion: No

3 Floor 1 - Basement



Dimensions: 33'7" x 20'2"
Area: 677 sq. ft
Counted as living area: No

Heated: Yes
Finished: No
Enclosed: Yes
Contiguous: Yes
Permitted: Yes
Wet space: No
Addition: No
Conversion: No

4 Floor 2 - Porch



Dimensions: 7'2" x 9'2"
Area: 66 sq. ft
Counted as living area: No

Heated: No
Finished: No
Enclosed: No
Contiguous: Yes
Permitted: Yes
Wet space: No
Addition: No
Conversion: No

5 Floor 2 - Primary Bath



Dimensions: 11'4" x 8'1"
Area: 92 sq. ft
Counted as living area: Yes

Heated: Yes
Finished: Yes
Enclosed: Yes
Contiguous: Yes
Permitted: Yes
Wet space: Yes
Addition: No
Conversion: No

6 Floor 2 - Hall



Dimensions: 3'0" x 17'5"
Area: 52 sq. ft
Counted as living area: Yes

Heated: Yes
Finished: Yes
Enclosed: Yes
Contiguous: Yes
Permitted: Yes
Wet space: No
Addition: No
Conversion: No

7 Floor 2 - Primary Bedroom



Dimensions: 12'5" x 15'5"
Area: 191 sq. ft
Counted as living area: Yes

Heated: Yes
Finished: Yes
Enclosed: Yes
Contiguous: Yes
Permitted: Yes
Wet space: No
Addition: No
Conversion: No

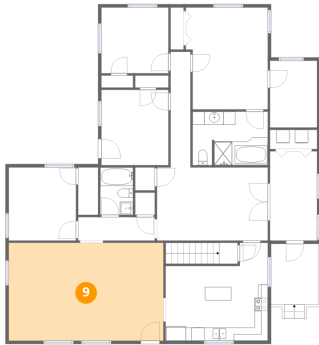
8 Floor 2 - Kitchen



Dimensions: 15'5" x 14'9"
Area: 228 sq. ft
Counted as living area: Yes

Heated: Yes
Finished: Yes
Enclosed: Yes
Contiguous: Yes
Permitted: Yes
Wet space: No
Addition: No
Conversion: No

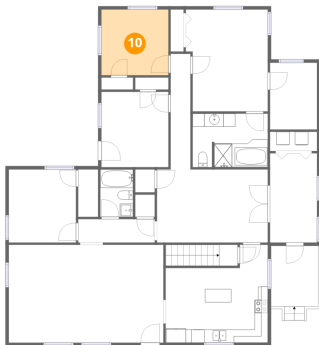
9 Floor 2 - Living Room



Dimensions: 23'5" x 14'9"
Area: 346 sq. ft
Counted as living area: Yes

Heated: Yes
Finished: Yes
Enclosed: Yes
Contiguous: Yes
Permitted: Yes
Wet space: No
Addition: No
Conversion: No

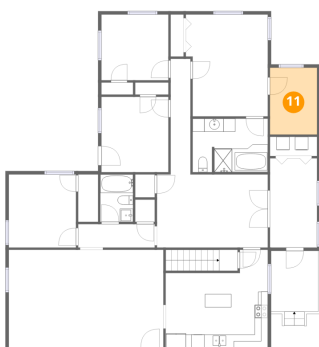
10 Floor 2 - Bedroom



Dimensions: 10'2" x 9'10"
Area: 100 sq. ft
Counted as living area: Yes

Heated: Yes
Finished: Yes
Enclosed: Yes
Contiguous: Yes
Permitted: Yes
Wet space: No
Addition: No
Conversion: No

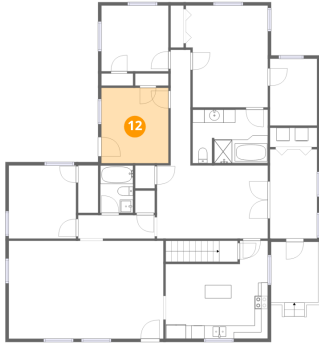
11 Floor 2 - Room



Dimensions: 7'1" x 10'1"
Area: 72 sq. ft
Counted as living area: Yes

Heated: Yes
Finished: Yes
Enclosed: Yes
Contiguous: Yes
Permitted: Yes
Wet space: No
Addition: No
Conversion: No

12 Floor 2 - Bedroom



Dimensions: 10'2" x 11'5"
Area: 115 sq. ft
Counted as living area: Yes

Heated: Yes
Finished: Yes
Enclosed: Yes
Contiguous: Yes
Permitted: Yes
Wet space: No
Addition: No
Conversion: No

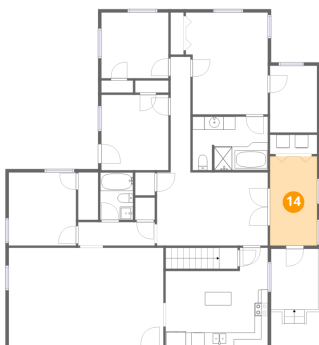
13 Floor 2 - Bath



Dimensions: 4'11" x 7'2"
Area: 36 sq. ft
Counted as living area: Yes

Heated: Yes
Finished: Yes
Enclosed: Yes
Contiguous: Yes
Permitted: Yes
Wet space: Yes
Addition: No
Conversion: No

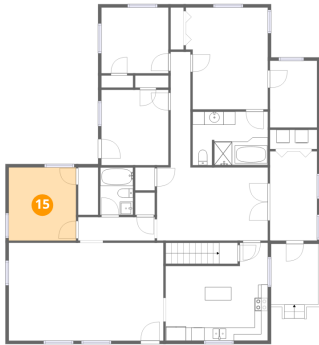
14 Floor 2 - Sun Room



Dimensions: 7'1" x 13'6"
Area: 96 sq. ft
Counted as living area: Yes

Heated: Yes
Finished: Yes
Enclosed: Yes
Contiguous: Yes
Permitted: Yes
Wet space: No
Addition: No
Conversion: No

15 Floor 2 - Bedroom



Dimensions: 10'2" x 11'1"
Area: 112 sq. ft
Counted as living area: Yes

Heated: Yes
Finished: Yes
Enclosed: Yes
Contiguous: Yes
Permitted: Yes
Wet space: No
Addition: No
Conversion: No

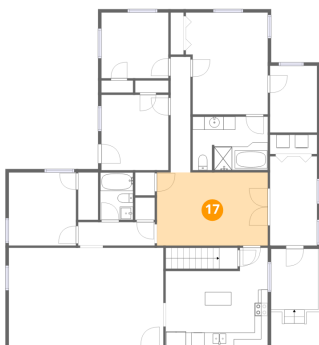
16 Floor 2 - Laundry



Dimensions: 7'1" x 2'11"
Area: 21 sq. ft
Counted as living area: Yes

Heated: Yes
Finished: Yes
Enclosed: Yes
Contiguous: Yes
Permitted: Yes
Wet space: No
Addition: No
Conversion: No

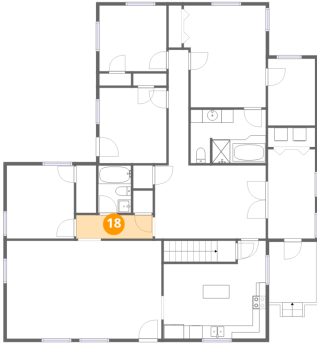
17 Floor 2 - Family Room



Dimensions: 16'9" x 11'1"
Area: 185 sq. ft
Counted as living area: Yes

Heated: Yes
Finished: Yes
Enclosed: Yes
Contiguous: Yes
Permitted: Yes
Wet space: No
Addition: No
Conversion: No

18 Floor 2 - Hall



Dimensions: 11'7" x 3'6"
Area: 41 sq. ft
Counted as living area: Yes

Heated: Yes
Finished: Yes
Enclosed: Yes
Contiguous: Yes
Permitted: Yes
Wet space: No
Addition: No
Conversion: No