

Home data report

32 Weybridge Drive, Barrhaven, Nepean, Ontario, Canada, K2J 2Z7



Total Area: 2289 sq. ft

Basement: 600 sq. ft, 1st Floor: 844 sq. ft, 2nd Floor: 845 sq. ft

Excluded: Utility 137 sq. ft, Storage 48 sq. ft, Garage 290 sq. ft, Fireplace 10 sq. ft, Walls: 206 sq. ft

Property summary

 **3** Floors

 **4** Bedrooms

 **3** Bathrooms

Home data report

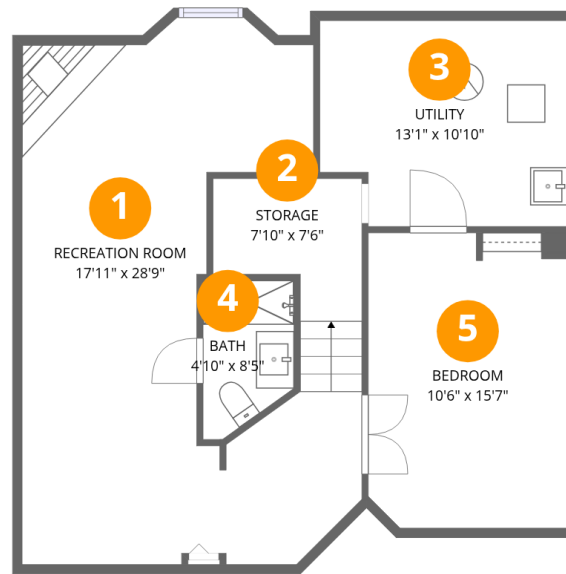
32 Weybridge Drive, Barrhaven, Nepean, Ontario, Canada, K2J 2Z7

 **1**
Half baths

 **1**
Garages

Home data report

32 Weybridge Drive, Barrhaven, Nepean, Ontario, Canada, K2J 2Z7



Room dimensions

Floor 1 Below grade

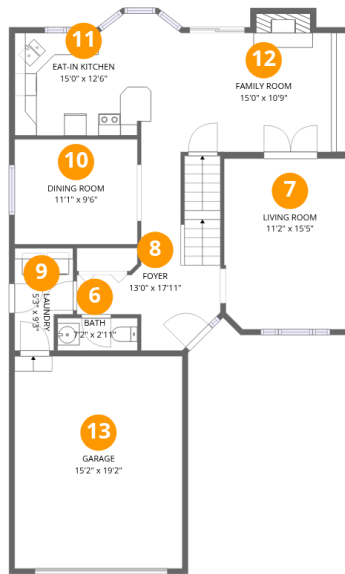
Total:600sqft

Excluded: 185sqft

#		Dimensions	sqft	Counted as living area
1	Recreation Room	17'11" x 28'9"	378 sq. ft	Yes
2	Storage	7'10" x 7'6"	48 sq. ft	No
3	Utility	13'1" x 10'10"	135 sq. ft	No
4	Bath	4'10" x 8'5"	35 sq. ft	Yes
5	Bedroom	10'6" x 15'7"	160 sq. ft	Yes

Home data report

32 Weybridge Drive, Barrhaven, Nepean, Ontario, Canada, K2J 2Z7



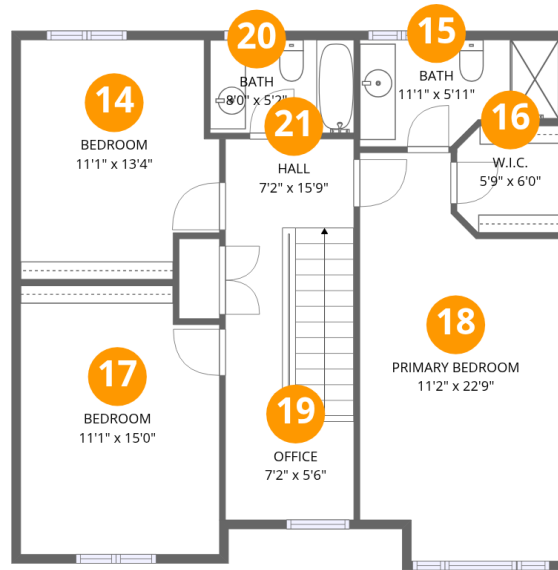
Room dimensions

Floor 2

Total:844sqft Excluded: 300sqft

#		Dimensions	sqft	Counted as living area
6	Bath	7'2" x 2'11"	21 sq. ft	Yes
7	Living Room	11'2" x 15'5"	170 sq. ft	Yes
8	Foyer	13'0" x 17'11"	140 sq. ft	Yes
9	Laundry	5'3" x 9'3"	43 sq. ft	Yes
10	Dining Room	11'1" x 9'6"	105 sq. ft	Yes
11	Eat-in Kitchen	15'0" x 12'6"	153 sq. ft	Yes
12	Family Room	15'0" x 10'9"	170 sq. ft	Yes
13	Garage	15'2" x 19'2"	290 sq. ft	No

32 Weybridge Drive, Barrhaven, Nepean, Ontario, Canada, K2J 2Z7



Room dimensions

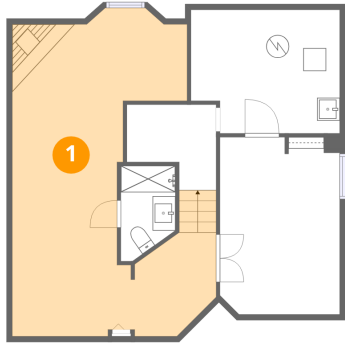
Floor 3

Total:845sqft

Excluded: 0sqft

#		Dimensions	sqft	Counted as living area
14	Bedroom	11'1" x 13'4"	137 sq. ft	Yes
15	Bath	11'1" x 5'11"	58 sq. ft	Yes
16	W.I.C.	5'9" x 6'0"	33 sq. ft	Yes
17	Bedroom	11'1" x 15'0"	161 sq. ft	Yes
18	Primary Bedroom	11'2" x 22'9"	219 sq. ft	Yes
19	Office	7'2" x 5'6"	39 sq. ft	Yes
20	Bath	8'0" x 5'2"	42 sq. ft	Yes
21	Hall	7'2" x 15'9"	113 sq. ft	Yes

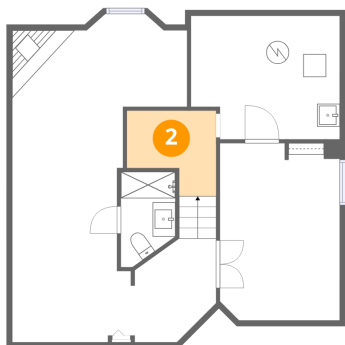
1 Floor 1 - Recreation Room



Dimensions: 17'11" x 28'9"
Area: 378 sq. ft
Counted as living area: Yes

Heated: Yes
Finished: Yes
Enclosed: Yes
Contiguous: Yes
Permitted: Yes
Wet space: No
Addition: No
Conversion: No

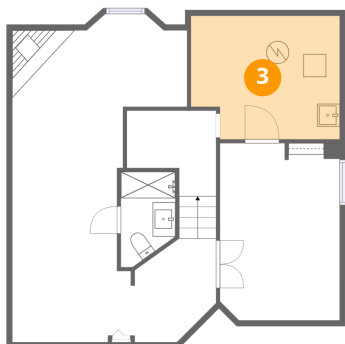
2 Floor 1 - Storage



Dimensions: 7'10" x 7'6"
Area: 48 sq. ft
Counted as living area: No

Heated: No
Finished: No
Enclosed: No
Contiguous: Yes
Permitted: Yes
Wet space: No
Addition: No
Conversion: No

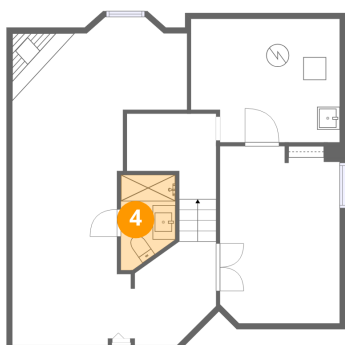
3 Floor 1 - Utility



Dimensions: 13'1" x 10'10"
Area: 135 sq. ft
Counted as living area: No

Heated: Yes
Finished: No
Enclosed: Yes
Contiguous: Yes
Permitted: Yes
Wet space: No
Addition: No
Conversion: No

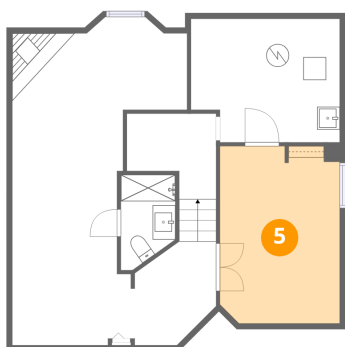
4 Floor 1 - Bath



Dimensions: 4'10" x 8'5"
Area: 35 sq. ft
Counted as living area: Yes

Heated: Yes
Finished: Yes
Enclosed: Yes
Contiguous: Yes
Permitted: Yes
Wet space: Yes
Addition: No
Conversion: No

5 Floor 1 - Bedroom



Dimensions: 10'6" x 15'7"
Area: 160 sq. ft
Counted as living area: Yes

Heated: Yes
Finished: Yes
Enclosed: Yes
Contiguous: Yes
Permitted: Yes
Wet space: No
Addition: No
Conversion: No

6 Floor 2 - Bath



Dimensions: 7'2" x 2'11"
Area: 21 sq. ft
Counted as living area: Yes

Heated: Yes
Finished: Yes
Enclosed: Yes
Contiguous: Yes
Permitted: Yes
Wet space: Yes
Addition: No
Conversion: No

7 Floor 2 - Living Room



Dimensions: 11'2" x 15'5"
Area: 170 sq. ft
Counted as living area: Yes

Heated: Yes
Finished: Yes
Enclosed: Yes
Contiguous: Yes
Permitted: Yes
Wet space: No
Addition: No
Conversion: No

8 Floor 2 - Foyer



Dimensions: 13'0" x 17'11"
Area: 140 sq. ft
Counted as living area: Yes

Heated: Yes
Finished: Yes
Enclosed: Yes
Contiguous: Yes
Permitted: Yes
Wet space: No
Addition: No
Conversion: No

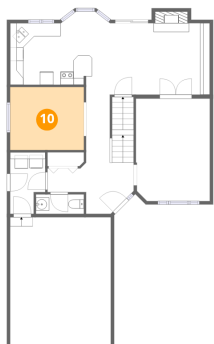
9 Floor 2 - Laundry



Dimensions: 5'3" x 9'3"
Area: 43 sq. ft
Counted as living area: Yes

Heated: Yes
Finished: Yes
Enclosed: Yes
Contiguous: Yes
Permitted: Yes
Wet space: No
Addition: No
Conversion: No

10 Floor 2 - Dining Room



Dimensions: 11'1" x 9'6"
Area: 105 sq. ft
Counted as living area: Yes

Heated: Yes
Finished: Yes
Enclosed: Yes
Contiguous: Yes
Permitted: Yes
Wet space: No
Addition: No
Conversion: No

11 Floor 2 - Eat-in Kitchen



Dimensions: 15'0" x 12'6"
Area: 153 sq. ft
Counted as living area: Yes

Heated: Yes
Finished: Yes
Enclosed: Yes
Contiguous: Yes
Permitted: Yes
Wet space: No
Addition: No
Conversion: No

32 Weybridge Drive, Barrhaven, Nepean, Ontario, Canada, K2J 2Z7

12 Floor 2 - Family Room



Dimensions: 15'0" x 10'9"
Area: 170 sq. ft
Counted as living area: Yes

Heated: Yes
Finished: Yes
Enclosed: Yes
Contiguous: Yes
Permitted: Yes
Wet space: No
Addition: No
Conversion: No

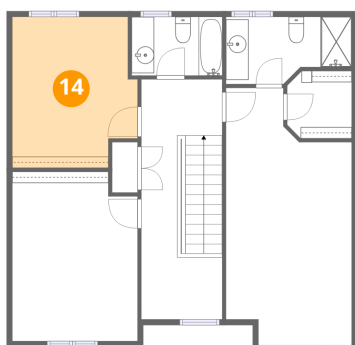
13 Floor 2 - Garage



Dimensions: 15'2" x 19'2"
Area: 290 sq. ft
Counted as living area: No

Heated: No
Finished: No
Enclosed: Yes
Contiguous: Yes
Permitted: Yes
Wet space: No
Addition: No
Conversion: No

14 Floor 3 - Bedroom



Dimensions: 11'1" x 13'4"
Area: 137 sq. ft
Counted as living area: Yes

Heated: Yes
Finished: Yes
Enclosed: Yes
Contiguous: Yes
Permitted: Yes
Wet space: No
Addition: No
Conversion: No

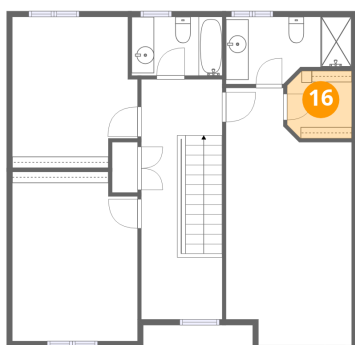
15 Floor 3 - Bath



Dimensions: 11'1" x 5'11"
Area: 58 sq. ft
Counted as living area: Yes

Heated: Yes
Finished: Yes
Enclosed: Yes
Contiguous: Yes
Permitted: Yes
Wet space: Yes
Addition: No
Conversion: No

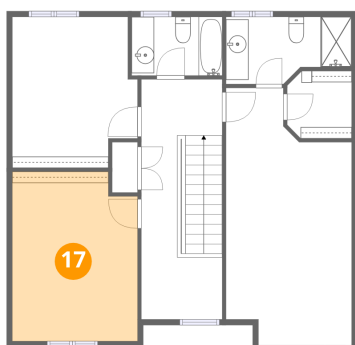
16 Floor 3 - W.I.C.



Dimensions: 5'9" x 6'0"
Area: 33 sq. ft
Counted as living area: Yes

Heated: Yes
Finished: Yes
Enclosed: Yes
Contiguous: Yes
Permitted: Yes
Wet space: No
Addition: No
Conversion: No

17 Floor 3 - Bedroom



Dimensions: 11'1" x 15'0"
Area: 161 sq. ft
Counted as living area: Yes

Heated: Yes
Finished: Yes
Enclosed: Yes
Contiguous: Yes
Permitted: Yes
Wet space: No
Addition: No
Conversion: No

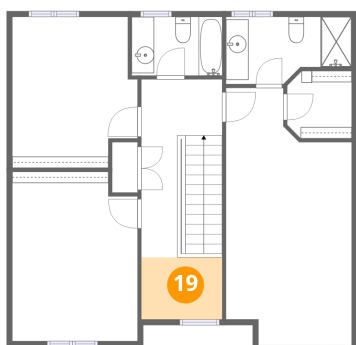
18 Floor 3 - Primary Bedroom



Dimensions: 11'2" x 22'9"
Area: 219 sq. ft
Counted as living area: Yes

Heated: Yes
Finished: Yes
Enclosed: Yes
Contiguous: Yes
Permitted: Yes
Wet space: No
Addition: No
Conversion: No

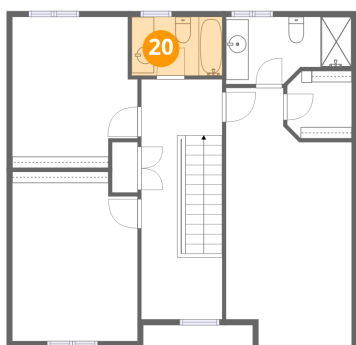
19 Floor 3 - Office



Dimensions: 7'2" x 5'6"
Area: 39 sq. ft
Counted as living area: Yes

Heated: Yes
Finished: Yes
Enclosed: Yes
Contiguous: Yes
Permitted: Yes
Wet space: No
Addition: No
Conversion: No

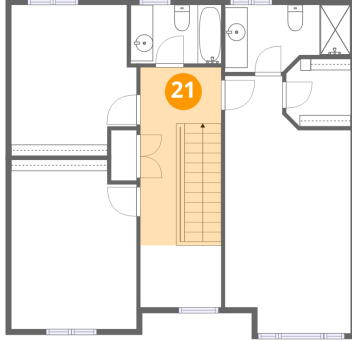
20 Floor 3 - Bath



Dimensions: 8'0" x 5'2"
Area: 42 sq. ft
Counted as living area: Yes

Heated: Yes
Finished: Yes
Enclosed: Yes
Contiguous: Yes
Permitted: Yes
Wet space: Yes
Addition: No
Conversion: No

21 Floor 3 - Hall



Dimensions: 7'2" x 15'9"
Area: 113 sq. ft
Counted as living area: Yes

Heated: Yes
Finished: Yes
Enclosed: Yes
Contiguous: Yes
Permitted: Yes
Wet space: No
Addition: No
Conversion: No