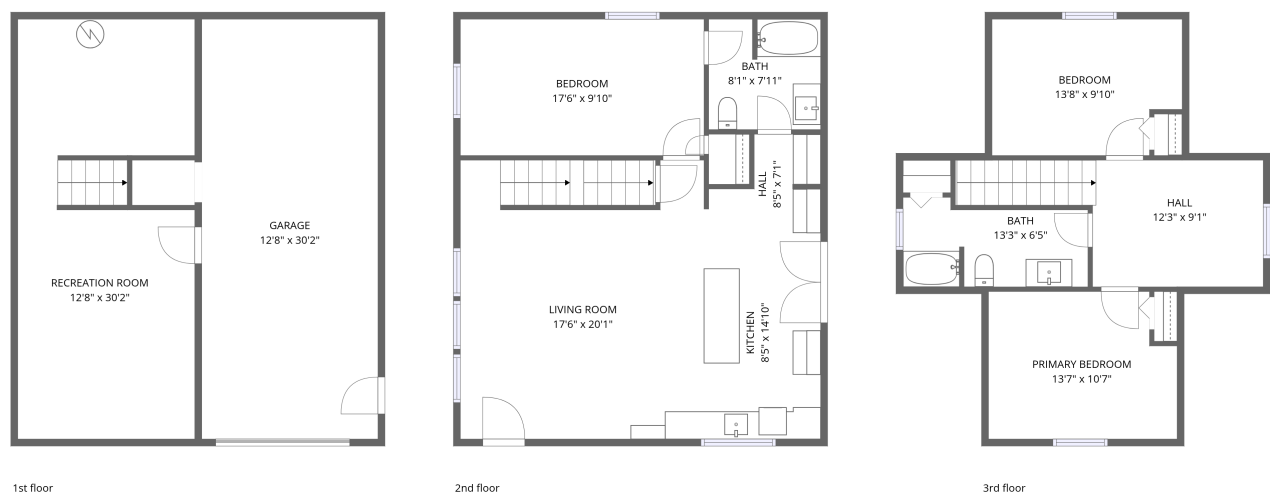


Home data report

195 Johnsons Mill Road, Berryville, Berkeley Springs, Morgan County, West Virginia, United States, 25411



Total Area: 1620 sq. ft

1st Floor: 380 sq. ft, 2nd Floor: 781 sq. ft, 3rd Floor: 459 sq. ft

Excluded: Garage 382 sq. ft, Low ceiling 64 sq. ft, Walls: 189 sq. ft

Property summary

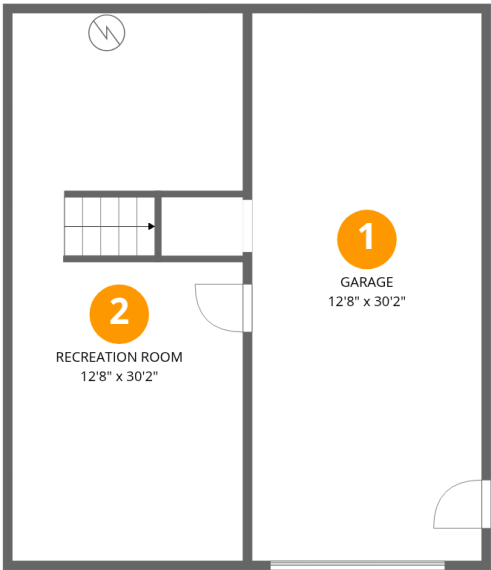
3 Floors

3 Bedrooms

2 Bathrooms

1 Garages

195 Johnsons Mill Road, Berryville, Berkeley Springs, Morgan County, West Virginia, United States, 25411



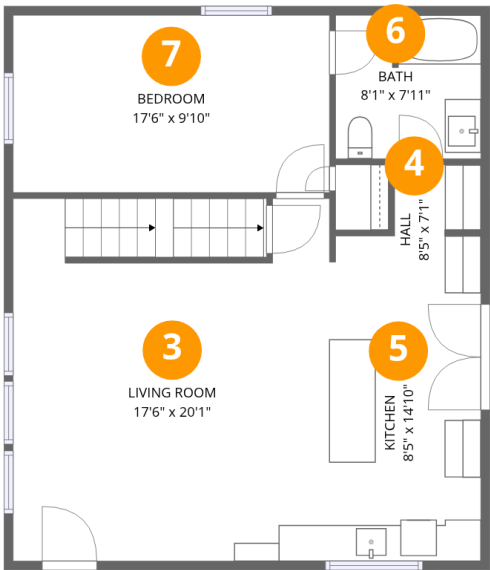
Room dimensions

Floor 1 Total:380sqft Excluded: 382sqft

#		Dimensions	sqft	Counted as living area
1	Garage	12'8" x 30'2"	382 sq. ft	No
2	Recreation Room	12'8" x 30'2"	383 sq. ft	Yes

Home data report

195 Johnsons Mill Road, Berryville, Berkeley Springs, Morgan County, West Virginia, United States, 25411



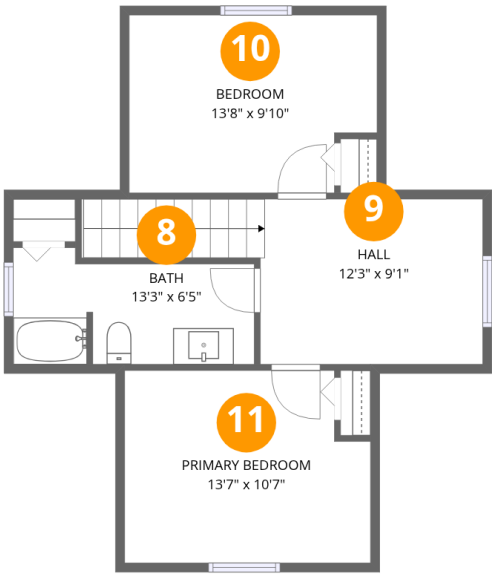
Room dimensions

Floor 2 Total:781sqft Excluded: 0sqft

#		Dimensions	sqft	Counted as living area
3	Living Room	17'6" x 20'1"	351 sq. ft	Yes
4	Hall	8'5" x 7'1"	59 sq. ft	Yes
5	Kitchen	8'5" x 14'10"	124 sq. ft	Yes
6	Bath	8'1" x 7'11"	64 sq. ft	Yes
7	Bedroom	17'6" x 9'10"	171 sq. ft	Yes

Home data report

195 Johnsons Mill Road, Berryville, Berkeley Springs, Morgan County, West Virginia, United States, 25411

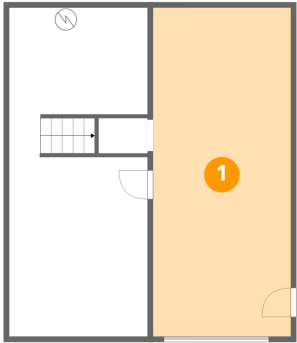


Room dimensions

Floor 3 Total:459sqft Excluded: 64sqft

#		Dimensions	sqft	Counted as living area
8	Bath	13'3" x 6'5"	85 sq. ft	Yes
9	Hall	12'3" x 9'1"	111 sq. ft	Yes
10	Bedroom	13'8" x 9'10"	134 sq. ft	Yes
11	Primary Bedroom	13'7" x 10'7"	144 sq. ft	Yes

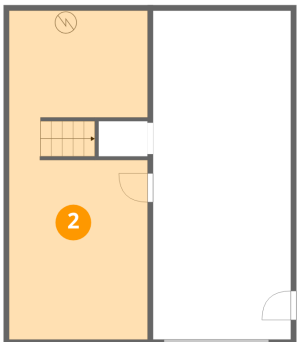
1 Floor 1 - Garage



Dimensions: 12'8" x 30'2"
Area: 382 sq. ft
Counted as living area: No

Heated: No
Finished: No
Enclosed: Yes
Contiguous: Yes
Permitted: Yes
Wet space: No
Addition: No
Conversion: No

2 Floor 1 - Recreation Room

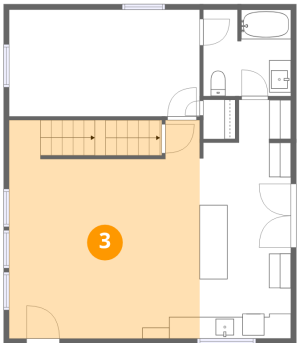


Dimensions: 12'8" x 30'2"
Area: 383 sq. ft
Counted as living area: Yes

Heated: Yes
Finished: Yes
Enclosed: Yes
Contiguous: Yes
Permitted: Yes
Wet space: No
Addition: No
Conversion: No

195 Johnsons Mill Road, Berryville, Berkeley Springs, Morgan
County, West Virginia, United States, 25411

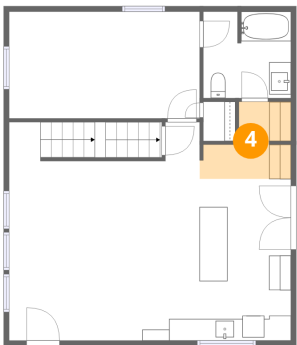
3 Floor 2 - Living Room



Dimensions: 17'6" x 20'1"
Area: 351 sq. ft
Counted as living area: Yes

Heated: Yes
Finished: Yes
Enclosed: Yes
Contiguous: Yes
Permitted: Yes
Wet space: No
Addition: No
Conversion: No

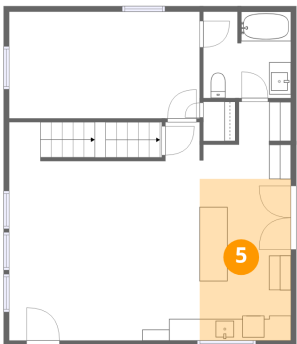
4 Floor 2 - Hall



Dimensions: 8'5" x 7'1"
Area: 59 sq. ft
Counted as living area: Yes

Heated: Yes
Finished: Yes
Enclosed: Yes
Contiguous: Yes
Permitted: Yes
Wet space: No
Addition: No
Conversion: No

5 Floor 2 - Kitchen

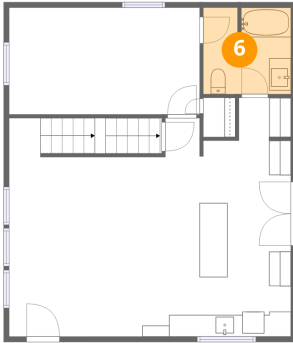


Dimensions: 8'5" x 14'10"
Area: 124 sq. ft
Counted as living area: Yes

Heated: Yes
Finished: Yes
Enclosed: Yes
Contiguous: Yes
Permitted: Yes
Wet space: No
Addition: No
Conversion: No

195 Johnsons Mill Road, Berryville, Berkeley Springs, Morgan
County, West Virginia, United States, 25411

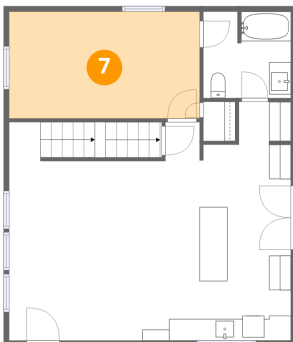
6 Floor 2 - Bath



Dimensions: 8'1" x 7'11"
Area: 64 sq. ft
Counted as living area: Yes

Heated: Yes
Finished: Yes
Enclosed: Yes
Contiguous: Yes
Permitted: Yes
Wet space: Yes
Addition: No
Conversion: No

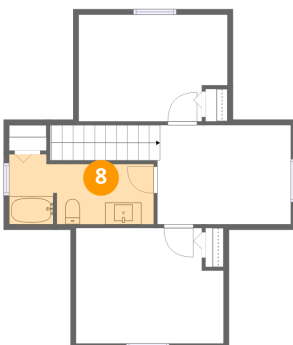
7 Floor 2 - Bedroom



Dimensions: 17'6" x 9'10"
Area: 171 sq. ft
Counted as living area: Yes

Heated: Yes
Finished: Yes
Enclosed: Yes
Contiguous: Yes
Permitted: Yes
Wet space: No
Addition: No
Conversion: No

8 Floor 3 - Bath

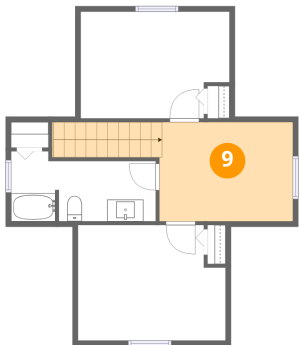


Dimensions: 13'3" x 6'5"
Area: 85 sq. ft
Counted as living area: Yes

Heated: Yes
Finished: Yes
Enclosed: Yes
Contiguous: Yes
Permitted: Yes
Wet space: Yes
Addition: No
Conversion: No

195 Johnsons Mill Road, Berryville, Berkeley Springs, Morgan County, West Virginia, United States, 25411

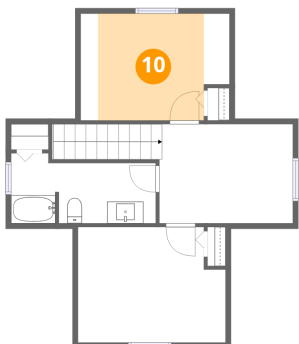
9 Floor 3 - Hall



Dimensions: 12'3" x 9'1"
Area: 111 sq. ft
Counted as living area: Yes

Heated: Yes
Finished: Yes
Enclosed: Yes
Contiguous: Yes
Permitted: Yes
Wet space: No
Addition: No
Conversion: No

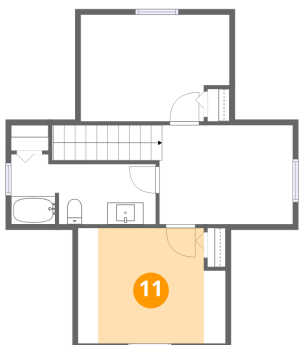
10 Floor 3 - Bedroom



Dimensions: 13'8" x 9'10"
Area: 134 sq. ft
Counted as living area: Yes

Heated: Yes
Finished: Yes
Enclosed: Yes
Contiguous: Yes
Permitted: Yes
Wet space: No
Addition: No
Conversion: No

11 Floor 3 - Primary Bedroom



Dimensions: 13'7" x 10'7"
Area: 144 sq. ft
Counted as living area: Yes

Heated: Yes
Finished: Yes
Enclosed: Yes
Contiguous: Yes
Permitted: Yes
Wet space: No
Addition: No
Conversion: No