

Home data report

8 lone Drive, South Elgin, Kane County, Illinois, United States, 60177, c



Total Area: 1761 sq. ft

Below Ground: 341 sq. ft, 1st Floor: 712 sq. ft, 2nd Floor: 708 sq. ft
Excluded: Utility 292 sq. ft, Garage 374 sq. ft, Open to below 216 sq. ft, Stairwell 54 sq. ft, Walls: 200 sq. ft

Property summary

 **3** Floors

 **2** Bedrooms

 **2** Bathrooms

Home data report

**8 Ione Drive, South Elgin, Kane County, Illinois, United States,
60177, c**

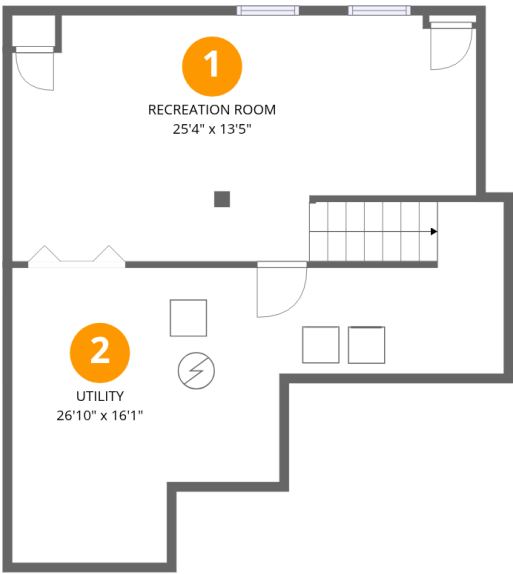


1
Half baths



1
Garages

8 Ione Drive, South Elgin, Kane County, Illinois, United States, 60177, c



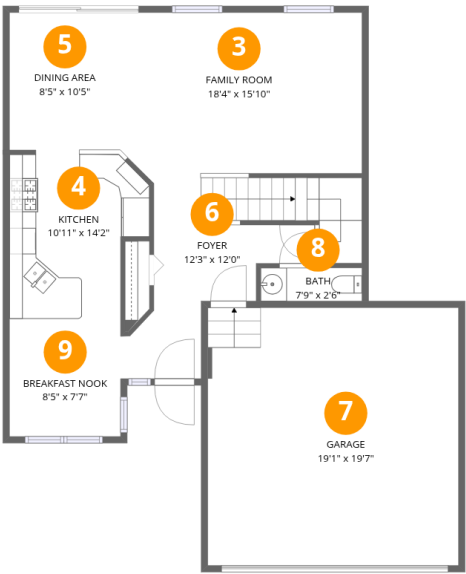
Room dimensions

Floor 1 Below grade Total:341sqft Excluded: 292sqft

#		Dimensions	sqft	Counted as living area
1	Recreation Room	25'4" x 13'5"	322 sq. ft	Yes
2	Utility	26'10" x 16'1"	292 sq. ft	No

Home data report

8 Ione Drive, South Elgin, Kane County, Illinois, United States, 60177, c

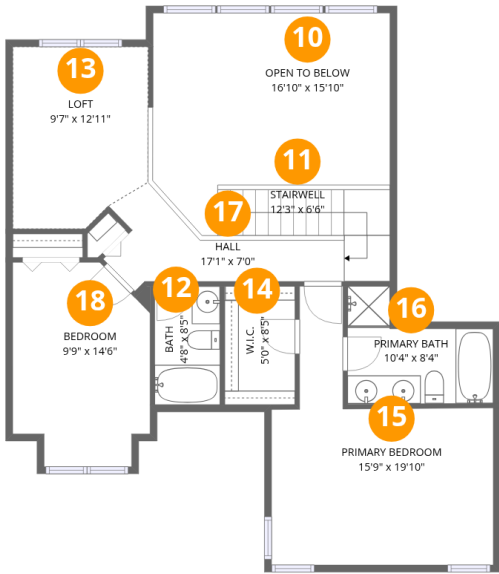


Room dimensions

Floor 2 Total:712sqft Excluded: 374sqft

#		Dimensions	sqft	Counted as living area
3	Family Room	18'4" x 15'10"	288 sq. ft	Yes
4	Kitchen	10'11" x 14'2"	150 sq. ft	Yes
5	Dining Area	8'5" x 10'5"	88 sq. ft	Yes
6	Foyer	12'3" x 12'0"	92 sq. ft	Yes
7	Garage	19'1" x 19'7"	374 sq. ft	No
8	Bath	7'9" x 2'6"	19 sq. ft	Yes
9	Breakfast Nook	8'5" x 7'7"	64 sq. ft	Yes

8 lone Drive, South Elgin, Kane County, Illinois, United States, 60177, c



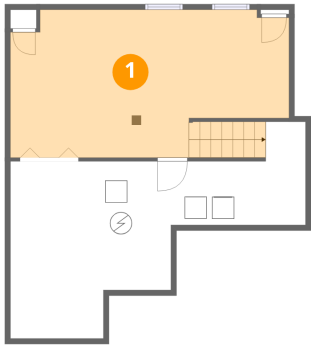
Room dimensions

Floor 3 Total:708sqft Excluded: 270sqft

#		Dimensions	sqft	Counted as living area
10	Open To Below	16'10" x 15'10"	216 sq. ft	No
11	Stairwell	12'3" x 6'6"	54 sq. ft	No
12	Bath	4'8" x 8'5"	39 sq. ft	Yes
13	Loft	9'7" x 12'11"	116 sq. ft	Yes
14	W.I.C.	5'0" x 8'5"	42 sq. ft	Yes
15	Primary Bedroom	15'9" x 19'10"	202 sq. ft	Yes
16	Primary Bath	10'4" x 8'4"	64 sq. ft	Yes
17	Hall	17'1" x 7'0"	70 sq. ft	Yes
18	Bedroom	9'9" x 14'6"	128 sq. ft	Yes

8 lone Drive, South Elgin, Kane County, Illinois, United States, 60177, c

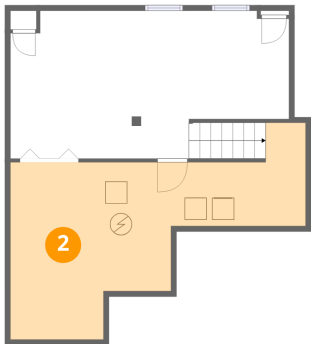
1 Floor 1 - Recreation Room



Dimensions: 25'4" x 13'5"
Area: 322 sq. ft
Counted as living area: Yes

Heated: Yes
Finished: Yes
Enclosed: Yes
Contiguous: Yes
Permitted: Yes
Wet space: No
Addition: No
Conversion: No

2 Floor 1 - Utility

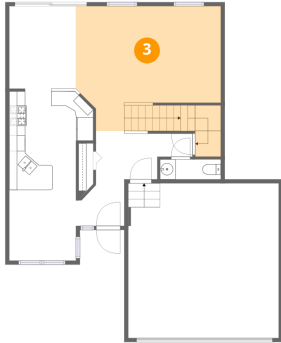


Dimensions: 26'10" x 16'1"
Area: 292 sq. ft
Counted as living area: No

Heated: Yes
Finished: No
Enclosed: Yes
Contiguous: Yes
Permitted: Yes
Wet space: No
Addition: No
Conversion: No

8 Ione Drive, South Elgin, Kane County, Illinois, United States,
60177, c

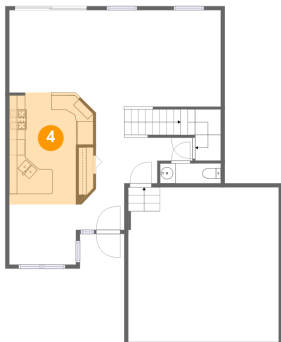
3 Floor 2 - Family Room



Dimensions: 18'4" x 15'10"
Area: 288 sq. ft
Counted as living area: Yes

Heated: Yes
Finished: Yes
Enclosed: Yes
Contiguous: Yes
Permitted: Yes
Wet space: No
Addition: No
Conversion: No

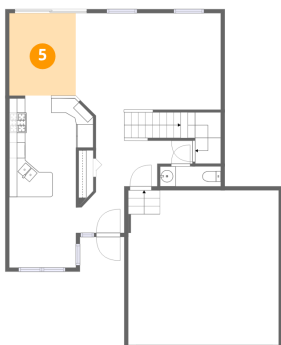
4 Floor 2 - Kitchen



Dimensions: 10'11" x 14'2"
Area: 150 sq. ft
Counted as living area: Yes

Heated: Yes
Finished: Yes
Enclosed: Yes
Contiguous: Yes
Permitted: Yes
Wet space: No
Addition: No
Conversion: No

5 Floor 2 - Dining Area

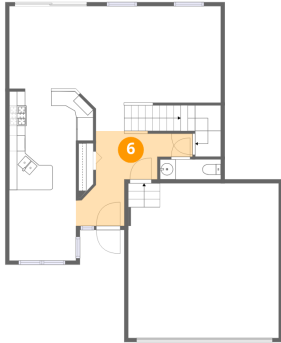


Dimensions: 8'5" x 10'5"
Area: 88 sq. ft
Counted as living area: Yes

Heated: Yes
Finished: Yes
Enclosed: Yes
Contiguous: Yes
Permitted: Yes
Wet space: No
Addition: No
Conversion: No

8 Ione Drive, South Elgin, Kane County, Illinois, United States, 60177, c

6 Floor 2 - Foyer



Dimensions: 12'3" x 12'0"
Area: 92 sq. ft
Counted as living area: Yes

Heated: Yes
Finished: Yes
Enclosed: Yes
Contiguous: Yes
Permitted: Yes
Wet space: No
Addition: No
Conversion: No

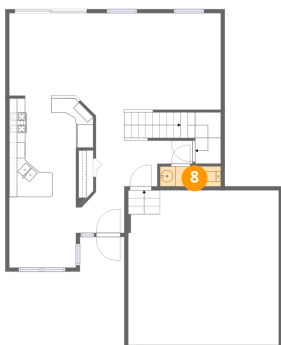
7 Floor 2 - Garage



Dimensions: 19'1" x 19'7"
Area: 374 sq. ft
Counted as living area: No

Heated: No
Finished: No
Enclosed: Yes
Contiguous: Yes
Permitted: Yes
Wet space: No
Addition: No
Conversion: No

8 Floor 2 - Bath

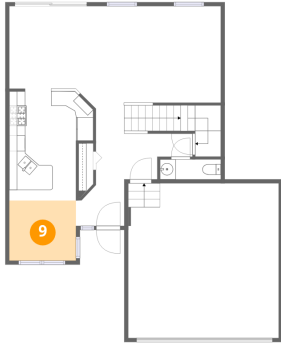


Dimensions: 7'9" x 2'6"
Area: 19 sq. ft
Counted as living area: Yes

Heated: Yes
Finished: Yes
Enclosed: Yes
Contiguous: Yes
Permitted: Yes
Wet space: Yes
Addition: No
Conversion: No

8 Ione Drive, South Elgin, Kane County, Illinois, United States, 60177, c

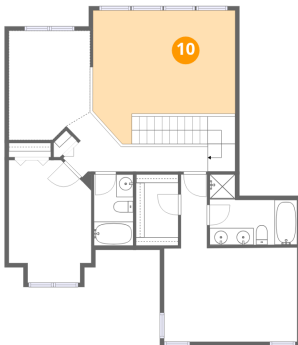
9 Floor 2 - Breakfast Nook



Dimensions: 8'5" x 7'7"
Area: 64 sq. ft
Counted as living area: Yes

Heated: Yes
Finished: Yes
Enclosed: Yes
Contiguous: Yes
Permitted: Yes
Wet space: No
Addition: No
Conversion: No

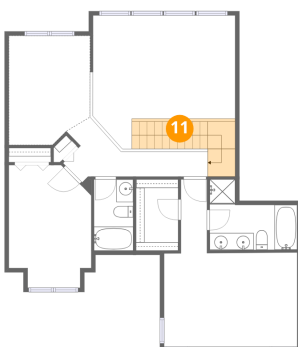
10 Floor 3 - Open To Below



Dimensions: 16'10" x 15'10"
Area: 216 sq. ft
Counted as living area: No

Heated: No
Finished: No
Enclosed: No
Contiguous: Yes
Permitted: No
Wet space: No
Addition: No
Conversion: No

11 Floor 3 - Stairwell

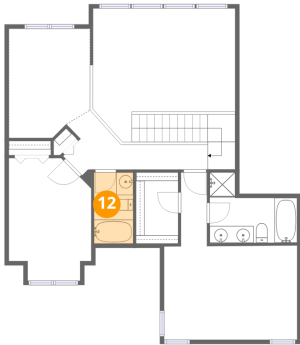


Dimensions: 12'3" x 6'6"
Area: 54 sq. ft
Counted as living area: No

Heated: No
Finished: No
Enclosed: No
Contiguous: Yes
Permitted: No
Wet space: No
Addition: No
Conversion: No

8 Lone Drive, South Elgin, Kane County, Illinois, United States,
60177, c

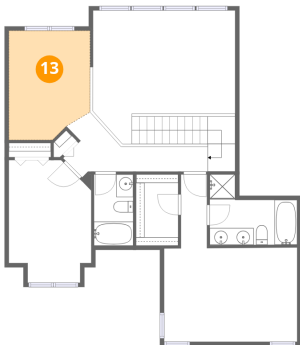
12 Floor 3 - Bath



Dimensions: 4'8" x 8'5"
Area: 39 sq. ft
Counted as living area: Yes

Heated: Yes
Finished: Yes
Enclosed: Yes
Contiguous: Yes
Permitted: Yes
Wet space: Yes
Addition: No
Conversion: No

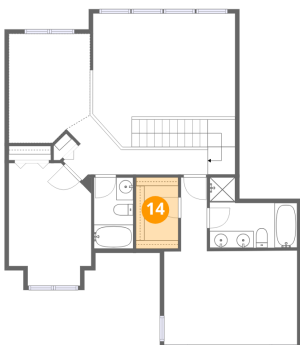
13 Floor 3 - Loft



Dimensions: 9'7" x 12'11"
Area: 116 sq. ft
Counted as living area: Yes

Heated: Yes
Finished: Yes
Enclosed: Yes
Contiguous: Yes
Permitted: Yes
Wet space: No
Addition: No
Conversion: No

14 Floor 3 - W.I.C.

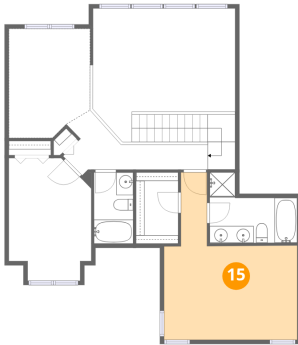


Dimensions: 5'0" x 8'5"
Area: 42 sq. ft
Counted as living area: Yes

Heated: Yes
Finished: Yes
Enclosed: Yes
Contiguous: Yes
Permitted: Yes
Wet space: No
Addition: No
Conversion: No

8 Ione Drive, South Elgin, Kane County, Illinois, United States,
60177, c

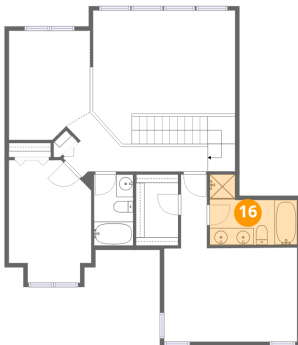
15 Floor 3 - Primary Bedroom



Dimensions: 15'9" x 19'10"
Area: 202 sq. ft
Counted as living area: Yes

Heated: Yes
Finished: Yes
Enclosed: Yes
Contiguous: Yes
Permitted: Yes
Wet space: No
Addition: No
Conversion: No

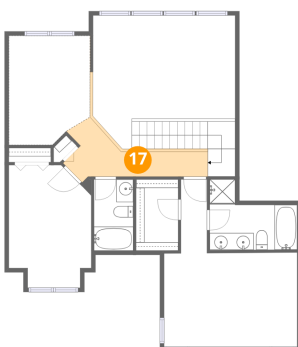
16 Floor 3 - Primary Bath



Dimensions: 10'4" x 8'4"
Area: 64 sq. ft
Counted as living area: Yes

Heated: Yes
Finished: Yes
Enclosed: Yes
Contiguous: Yes
Permitted: Yes
Wet space: Yes
Addition: No
Conversion: No

17 Floor 3 - Hall



Dimensions: 17'1" x 7'0"
Area: 70 sq. ft
Counted as living area: Yes

Heated: Yes
Finished: Yes
Enclosed: Yes
Contiguous: Yes
Permitted: Yes
Wet space: No
Addition: No
Conversion: No

8 Ione Drive, South Elgin, Kane County, Illinois, United States, 60177, c

18 Floor 3 - Bedroom



Dimensions: 9'9" x 14'6"
Area: 128 sq. ft
Counted as living area: Yes

Heated: Yes
Finished: Yes
Enclosed: Yes
Contiguous: Yes
Permitted: Yes
Wet space: No
Addition: No
Conversion: No