



**Total Area: 3369 sq. ft**

Basement: 820 sq. ft, 1st Floor: 1292 sq. ft, 2nd Floor: 1257 sq. ft

Excluded: Room 306 sq. ft, Utility 116 sq. ft, Garage 379 sq. ft, Porch 84 sq. ft, Fireplace 11 sq. ft, Open to below 41 sq. ft, Stairwell 30 sq. ft, Walls: 281 sq. ft

**Property summary**



Home data report

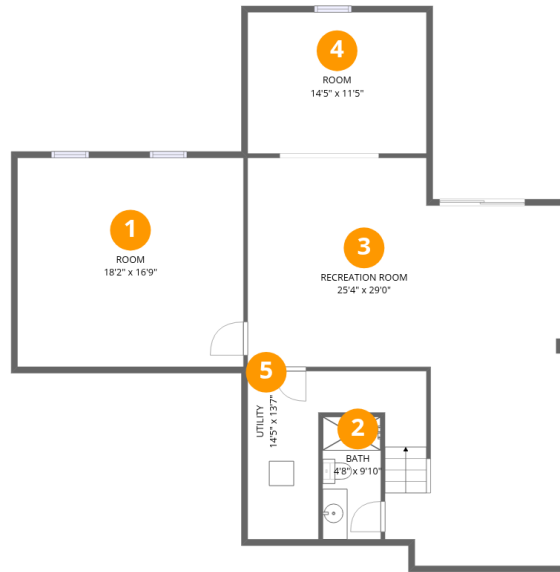
**35514 St James Dr, Round Hill, VA, US**

 **1**  
Half baths

 **1**  
Garages

# Home data report

## 35514 St James Dr, Round Hill, VA, US



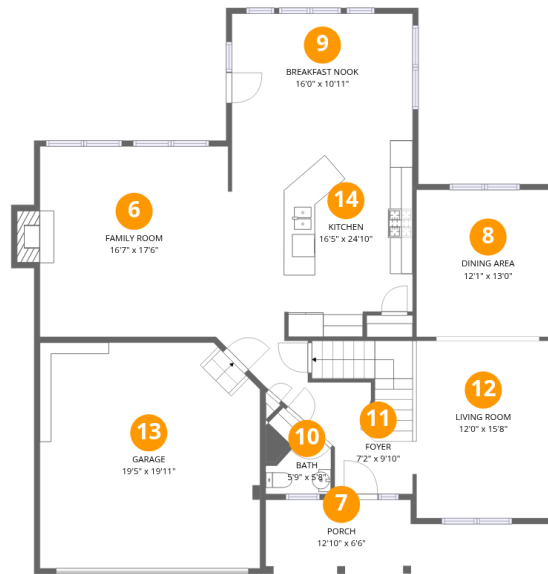
### Room dimensions

Floor 1 Below grade

Total:820sqft

Excluded: 422sqft

#		Dimensions	sqft	Counted as living area
1	Room	18'2" x 16'9"	306 sq. ft	No
2	Bath	4'8" x 9'10"	46 sq. ft	Yes
3	Recreation Room	25'4" x 29'0"	735 sq. ft	Yes
4	Room	14'5" x 11'5"	164 sq. ft	Yes
5	Utility	14'5" x 13'7"	195 sq. ft	No



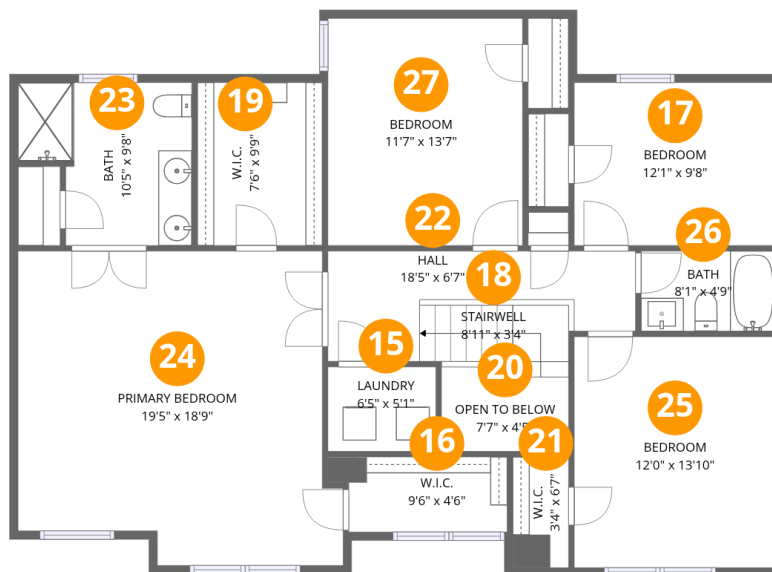
## Room dimensions

Floor 2

Total: 1292 sqft

Excluded: 474 sqft

#		Dimensions	sqft	Counted as living area
6	Family Room	16'7" x 17'6"	290 sq. ft	Yes
7	Porch	12'10" x 6'6"	84 sq. ft	No
8	Dining Area	12'1" x 13'0"	157 sq. ft	Yes
9	Breakfast Nook	16'0" x 10'11"	174 sq. ft	Yes
10	Bath	5'9" x 5'8"	33 sq. ft	Yes
11	Foyer	7'2" x 9'10"	71 sq. ft	Yes
12	Living Room	12'0" x 15'8"	188 sq. ft	Yes
13	Garage	19'5" x 19'11"	387 sq. ft	No
14	Kitchen	16'5" x 24'10"	409 sq. ft	Yes



## Room dimensions

Floor 3

Total: 1257 sqft

Excluded: 71 sqft

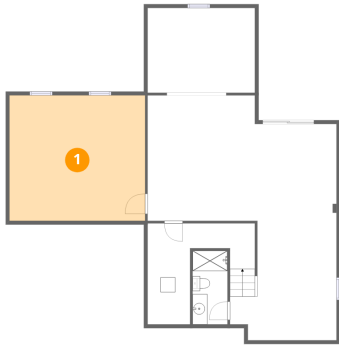
#		Dimensions	sqft	Counted as living area
15	Laundry	6'5" x 5'1"	33 sq. ft	Yes
16	W.I.C.	9'6" x 4'6"	43 sq. ft	Yes
17	Bedroom	12'1" x 9'8"	117 sq. ft	Yes
18	Stairwell	8'11" x 3'4"	30 sq. ft	No
19	W.I.C.	7'6" x 9'9"	73 sq. ft	Yes
20	Open To Below	7'7" x 4'5"	34 sq. ft	No
21	W.I.C.	3'4" x 6'7"	22 sq. ft	Yes
22	Hall	18'5" x 6'7"	121 sq. ft	Yes
23	Bath	10'5" x 9'8"	101 sq. ft	Yes
24	Primary Bedroom	19'5" x 18'9"	365 sq. ft	Yes
25	Bedroom	12'0" x 13'10"	166 sq. ft	Yes

Home data report

**35514 St James Dr,Round Hill,VA,US**

#		Dimensions	sqft	Counted as living area
26	Bath	8'1" x 4'9"	39 sq. ft	Yes
27	Bedroom	11'7" x 13'7"	158 sq. ft	Yes

## 1 Floor 1 - Room



Dimensions: 18'2" x 16'9"  
Area: 306 sq. ft  
Counted as living area: No

Heated: Yes  
Finished: No  
Enclosed: Yes  
Contiguous: Yes  
Permitted: Yes  
Wet space: No  
Addition: No  
Conversion: No

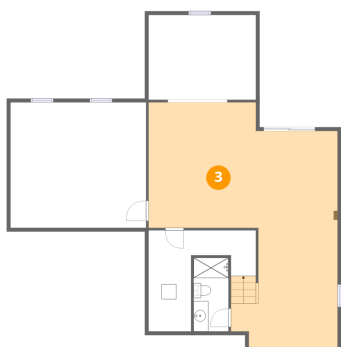
## 2 Floor 1 - Bath



Dimensions: 4'8" x 9'10"  
Area: 46 sq. ft  
Counted as living area: Yes

Heated: Yes  
Finished: Yes  
Enclosed: Yes  
Contiguous: Yes  
Permitted: Yes  
Wet space: Yes  
Addition: No  
Conversion: No

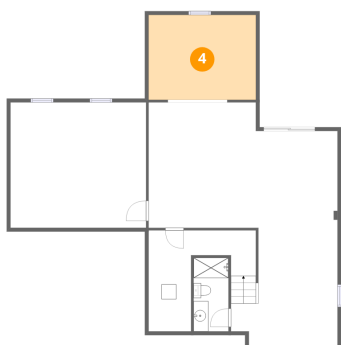
### 3 Floor 1 - Recreation Room



Dimensions: 25'4" x 29'0"  
Area: 735 sq. ft  
Counted as living area: Yes

Heated: Yes  
Finished: Yes  
Enclosed: Yes  
Contiguous: Yes  
Permitted: Yes  
Wet space: No  
Addition: No  
Conversion: No

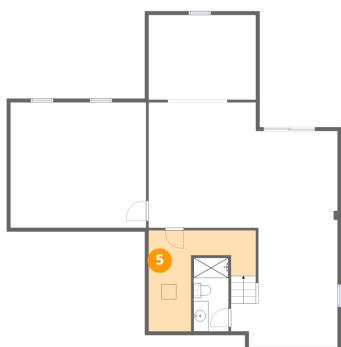
### 4 Floor 1 - Room



Dimensions: 14'5" x 11'5"  
Area: 164 sq. ft  
Counted as living area: Yes

Heated: Yes  
Finished: Yes  
Enclosed: Yes  
Contiguous: Yes  
Permitted: Yes  
Wet space: No  
Addition: No  
Conversion: No

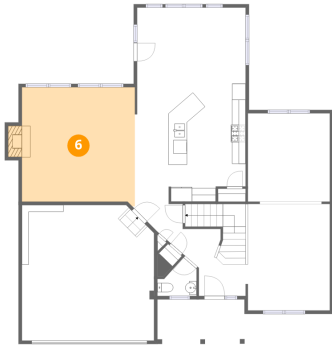
### 5 Floor 1 - Utility



Dimensions: 14'5" x 13'7"  
Area: 195 sq. ft  
Counted as living area: No

Heated: Yes  
Finished: No  
Enclosed: Yes  
Contiguous: Yes  
Permitted: Yes  
Wet space: No  
Addition: No  
Conversion: No

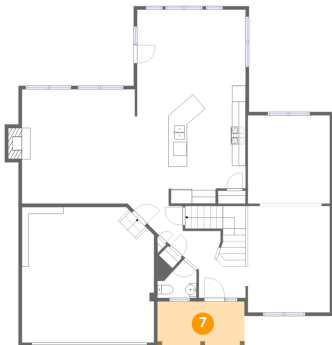
## 6 Floor 2 - Family Room



Dimensions: 16'7" x 17'6"  
Area: 290 sq. ft  
Counted as living area: Yes

Heated: Yes  
Finished: Yes  
Enclosed: Yes  
Contiguous: Yes  
Permitted: Yes  
Wet space: No  
Addition: No  
Conversion: No

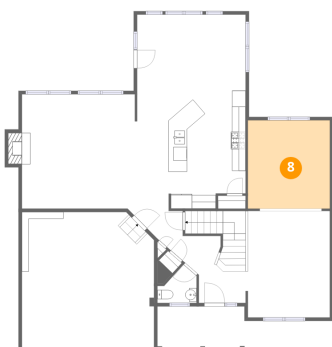
## 7 Floor 2 - Porch



Dimensions: 12'10" x 6'6"  
Area: 84 sq. ft  
Counted as living area: No

Heated: No  
Finished: No  
Enclosed: No  
Contiguous: Yes  
Permitted: Yes  
Wet space: No  
Addition: No  
Conversion: No

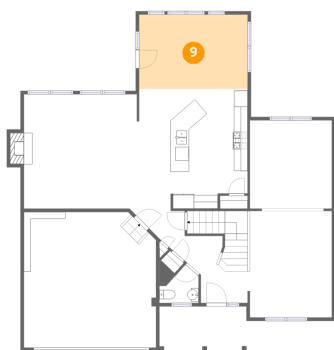
## 8 Floor 2 - Dining Area



Dimensions: 12'1" x 13'0"  
Area: 157 sq. ft  
Counted as living area: Yes

Heated: Yes  
Finished: Yes  
Enclosed: Yes  
Contiguous: Yes  
Permitted: Yes  
Wet space: No  
Addition: No  
Conversion: No

## 9 Floor 2 - Breakfast Nook



Dimensions: 16'0" x 10'11"  
Area: 174 sq. ft  
Counted as living area: Yes

Heated: Yes  
Finished: Yes  
Enclosed: Yes  
Contiguous: Yes  
Permitted: Yes  
Wet space: No  
Addition: No  
Conversion: No

## 10 Floor 2 - Bath



Dimensions: 5'9" x 5'8"  
Area: 33 sq. ft  
Counted as living area: Yes

Heated: Yes  
Finished: Yes  
Enclosed: Yes  
Contiguous: Yes  
Permitted: Yes  
Wet space: Yes  
Addition: No  
Conversion: No

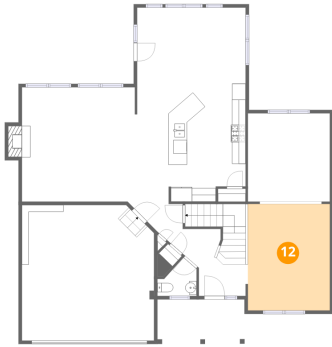
## 11 Floor 2 - Foyer



Dimensions: 7'2" x 9'10"  
Area: 71 sq. ft  
Counted as living area: Yes

Heated: Yes  
Finished: Yes  
Enclosed: Yes  
Contiguous: Yes  
Permitted: Yes  
Wet space: No  
Addition: No  
Conversion: No

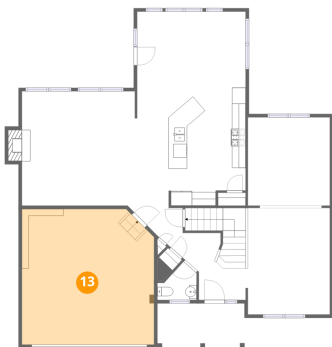
## 12 Floor 2 - Living Room



Dimensions: 12'0" x 15'8"  
Area: 188 sq. ft  
Counted as living area: Yes

Heated: Yes  
Finished: Yes  
Enclosed: Yes  
Contiguous: Yes  
Permitted: Yes  
Wet space: No  
Addition: No  
Conversion: No

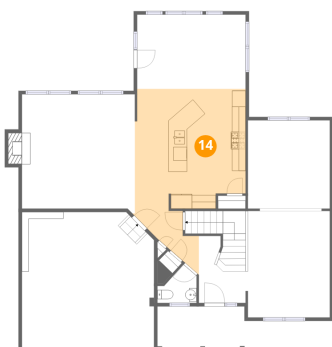
## 13 Floor 2 - Garage



Dimensions: 19'5" x 19'11"  
Area: 387 sq. ft  
Counted as living area: No

Heated: No  
Finished: No  
Enclosed: Yes  
Contiguous: Yes  
Permitted: Yes  
Wet space: No  
Addition: No  
Conversion: No

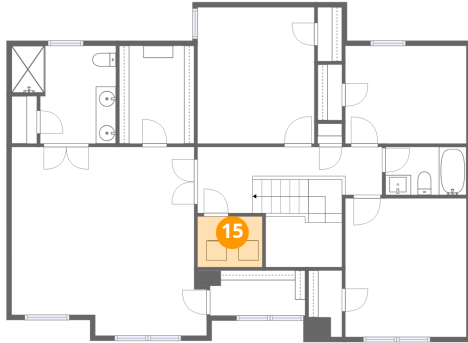
## 14 Floor 2 - Kitchen



Dimensions: 16'5" x 24'10"  
Area: 409 sq. ft  
Counted as living area: Yes

Heated: Yes  
Finished: Yes  
Enclosed: Yes  
Contiguous: Yes  
Permitted: Yes  
Wet space: No  
Addition: No  
Conversion: No

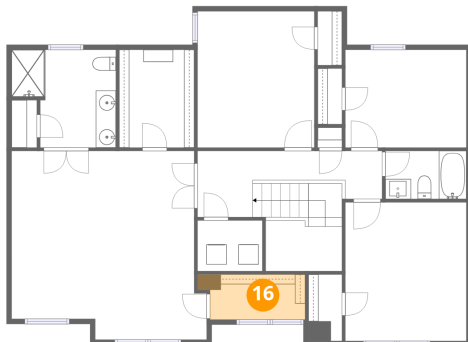
**15** Floor 3 - Laundry



Dimensions: 6'5" x 5'1"  
Area: 33 sq. ft  
Counted as living area: Yes

Heated: Yes  
Finished: Yes  
Enclosed: Yes  
Contiguous: Yes  
Permitted: Yes  
Wet space: No  
Addition: No  
Conversion: No

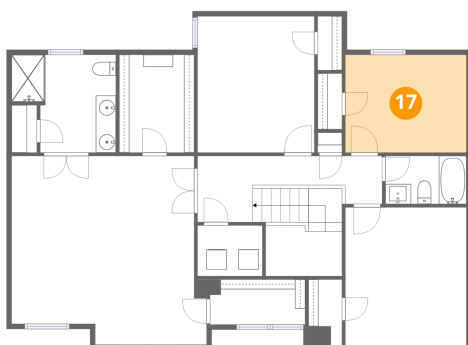
**16** Floor 3 - W.I.C.



Dimensions: 9'6" x 4'6"  
Area: 43 sq. ft  
Counted as living area: Yes

Heated: Yes  
Finished: Yes  
Enclosed: Yes  
Contiguous: Yes  
Permitted: Yes  
Wet space: No  
Addition: No  
Conversion: No

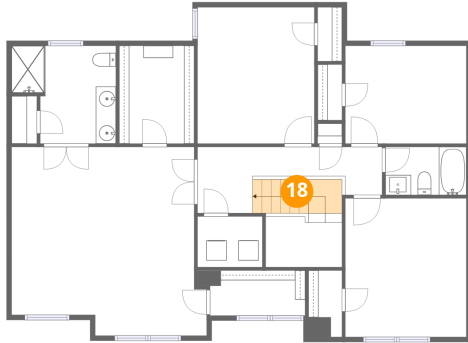
**17** Floor 3 - Bedroom



Dimensions: 12'1" x 9'8"  
Area: 117 sq. ft  
Counted as living area: Yes

Heated: Yes  
Finished: Yes  
Enclosed: Yes  
Contiguous: Yes  
Permitted: Yes  
Wet space: No  
Addition: No  
Conversion: No

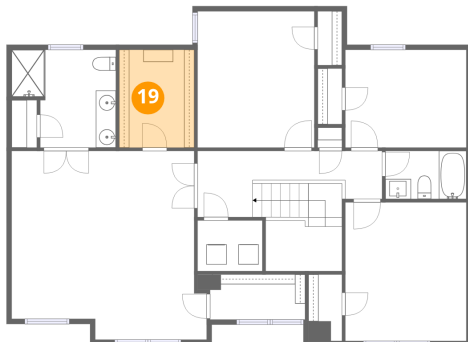
**18** Floor 3 - Stairwell



Dimensions: 8'11" x 3'4"  
Area: 30 sq. ft  
Counted as living area: No

Heated: No  
Finished: No  
Enclosed: No  
Contiguous: Yes  
Permitted: No  
Wet space: No  
Addition: No  
Conversion: No

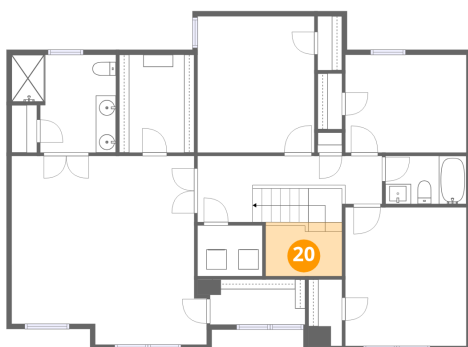
**19** Floor 3 - W.I.C.



Dimensions: 7'6" x 9'9"  
Area: 73 sq. ft  
Counted as living area: Yes

Heated: Yes  
Finished: Yes  
Enclosed: Yes  
Contiguous: Yes  
Permitted: Yes  
Wet space: No  
Addition: No  
Conversion: No

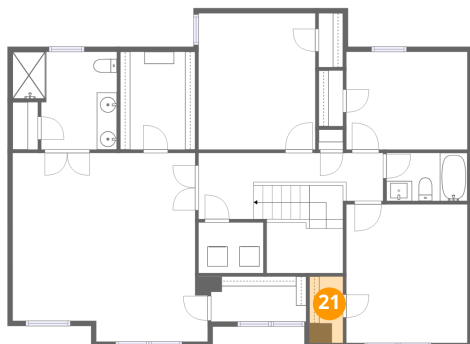
**20** Floor 3 - Open To Below



Dimensions: 7'7" x 4'5"  
Area: 34 sq. ft  
Counted as living area: No

Heated: No  
Finished: No  
Enclosed: No  
Contiguous: Yes  
Permitted: No  
Wet space: No  
Addition: No  
Conversion: No

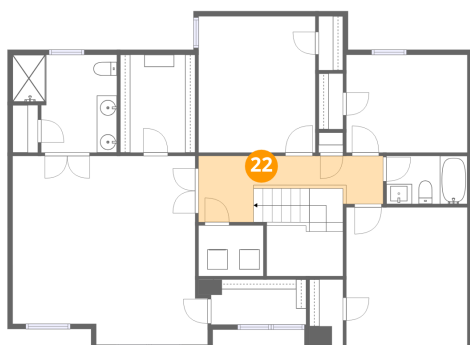
**21** Floor 3 - W.I.C.



Dimensions: 3'4" x 6'7"  
Area: 22 sq. ft  
Counted as living area: Yes

Heated: Yes  
Finished: Yes  
Enclosed: Yes  
Contiguous: Yes  
Permitted: Yes  
Wet space: No  
Addition: No  
Conversion: No

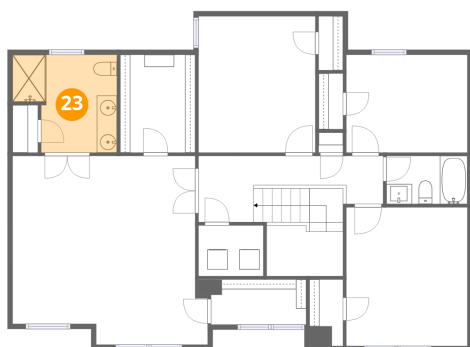
**22** Floor 3 - Hall



Dimensions: 18'5" x 6'7"  
Area: 121 sq. ft  
Counted as living area: Yes

Heated: Yes  
Finished: Yes  
Enclosed: Yes  
Contiguous: Yes  
Permitted: Yes  
Wet space: No  
Addition: No  
Conversion: No

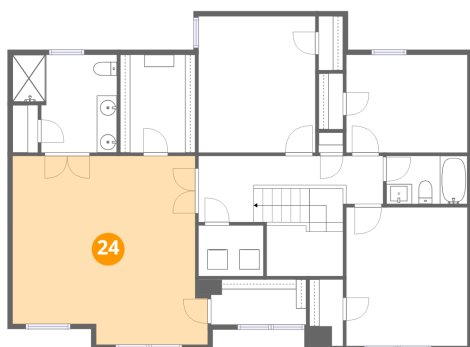
**23** Floor 3 - Bath



Dimensions: 10'5" x 9'8"  
Area: 101 sq. ft  
Counted as living area: Yes

Heated: Yes  
Finished: Yes  
Enclosed: Yes  
Contiguous: Yes  
Permitted: Yes  
Wet space: Yes  
Addition: No  
Conversion: No

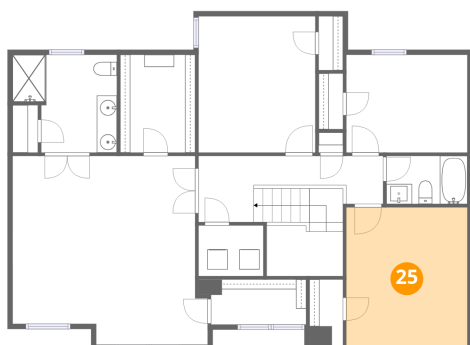
### 24 Floor 3 - Primary Bedroom



Dimensions: 19'5" x 18'9"  
Area: 365 sq. ft  
Counted as living area: Yes

Heated: Yes  
Finished: Yes  
Enclosed: Yes  
Contiguous: Yes  
Permitted: Yes  
Wet space: No  
Addition: No  
Conversion: No

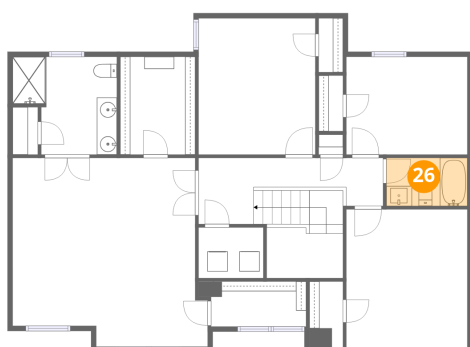
### 25 Floor 3 - Bedroom



Dimensions: 12'0" x 13'10"  
Area: 166 sq. ft  
Counted as living area: Yes

Heated: Yes  
Finished: Yes  
Enclosed: Yes  
Contiguous: Yes  
Permitted: Yes  
Wet space: No  
Addition: No  
Conversion: No

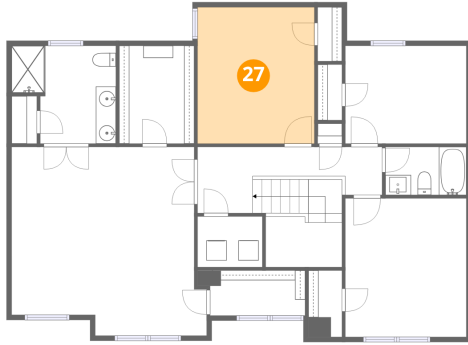
### 26 Floor 3 - Bath



Dimensions: 8'1" x 4'9"  
Area: 39 sq. ft  
Counted as living area: Yes

Heated: Yes  
Finished: Yes  
Enclosed: Yes  
Contiguous: Yes  
Permitted: Yes  
Wet space: Yes  
Addition: No  
Conversion: No

**27** Floor 3 - Bedroom



**Dimensions:** 11'7" x 13'7"  
**Area:** 158 sq. ft  
**Counted as living area:** Yes

**Heated:** Yes  
**Finished:** Yes  
**Enclosed:** Yes  
**Contiguous:** Yes  
**Permitted:** Yes  
**Wet space:** No  
**Addition:** No  
**Conversion:** No