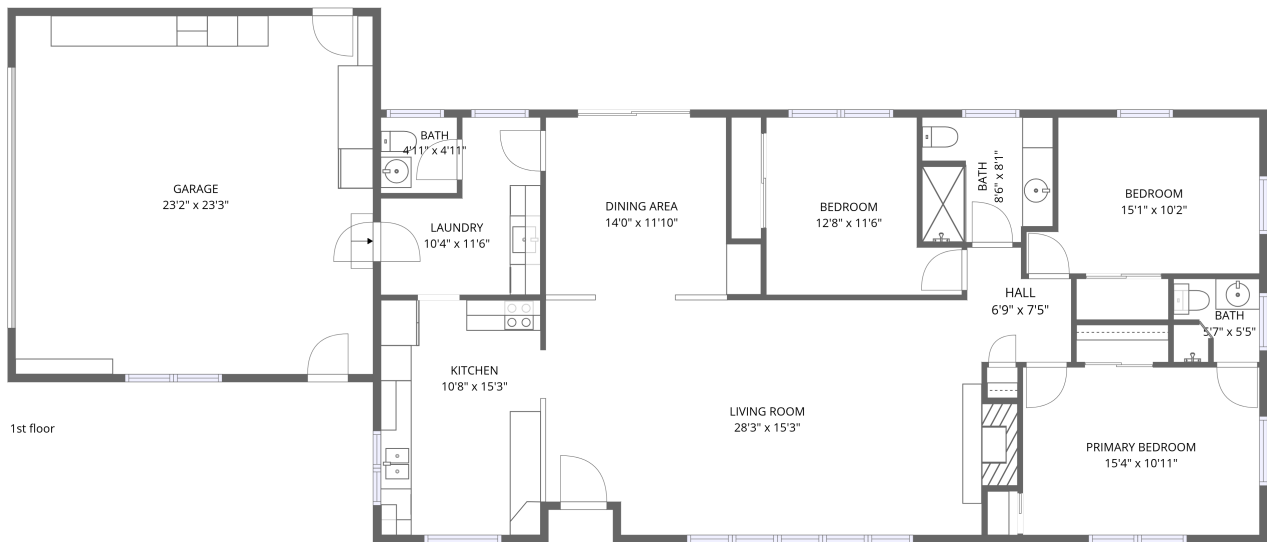


Home data report

7570 Stevensville-Baroda Rd, Stevensville, MI, US

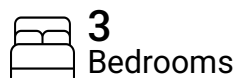


Total Area: 1532 sq. ft

1st Floor: 1532 sq. ft

Excluded: Garage 539 sq. ft, Walls: 126 sq. ft

Property summary



Scan captured on Wed, 20 May 2026 19:05:47 GMT

FLOOR PLAN CREATED BY CUBICASA APP. MEASUREMENTS DEEMED HIGHLY RELIABLE BUT NOT GUARANTEED.

Home data report

7570 Stevensville-Baroda Rd, Stevensville, MI, US

 **1**
Half baths

 **1**
Garages



Room dimensions

Floor 1

Total: 1532 sqft

Excluded: 539 sqft

#		Dimensions	sqft	Counted as living area
1	Bath	5'7" x 5'5"	29 sq. ft	Yes
2	Primary Bedroom	15'4" x 10'11"	167 sq. ft	Yes
3	Living Room	28'3" x 15'3"	431 sq. ft	Yes
4	Bedroom	12'8" x 11'6"	121 sq. ft	Yes
5	Bath	8'6" x 8'1"	66 sq. ft	Yes
6	Laundry	10'4" x 11'6"	92 sq. ft	Yes
7	Bedroom	15'1" x 10'2"	138 sq. ft	Yes
8	Bath	4'11" x 4'11"	24 sq. ft	Yes
9	Dining Area	14'0" x 11'10"	146 sq. ft	Yes
10	Garage	23'2" x 23'3"	539 sq. ft	No
11	Hall	6'9" x 7'5"	42 sq. ft	Yes

Home data report

7570 Stevensville-Baroda Rd, Stevensville, MI, US

#		Dimensions	sqft	Counted as living area
12	Kitchen	10'8" x 15'3"	161 sq. ft	Yes

1 Floor 1 - Bath



Dimensions: 5'7" x 5'5"
Area: 29 sq. ft
Counted as living area: Yes

Heated: Yes
Finished: Yes
Enclosed: Yes
Contiguous: Yes
Permitted: Yes
Wet space: Yes
Addition: No
Conversion: No

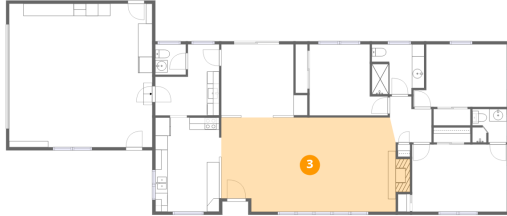
2 Floor 1 - Primary Bedroom



Dimensions: 15'4" x 10'11"
Area: 167 sq. ft
Counted as living area: Yes

Heated: Yes
Finished: Yes
Enclosed: Yes
Contiguous: Yes
Permitted: Yes
Wet space: No
Addition: No
Conversion: No

3 Floor 1 - Living Room



Dimensions: 28'3" x 15'3"
Area: 431 sq. ft
Counted as living area: Yes

Heated: Yes
Finished: Yes
Enclosed: Yes
Contiguous: Yes
Permitted: Yes
Wet space: No
Addition: No
Conversion: No

4 Floor 1 - Bedroom



Dimensions: 12'8" x 11'6"
Area: 121 sq. ft
Counted as living area: Yes

Heated: Yes
Finished: Yes
Enclosed: Yes
Contiguous: Yes
Permitted: Yes
Wet space: No
Addition: No
Conversion: No

5 Floor 1 - Bath



Dimensions: 8'6" x 8'1"
Area: 66 sq. ft
Counted as living area: Yes

Heated: Yes
Finished: Yes
Enclosed: Yes
Contiguous: Yes
Permitted: Yes
Wet space: Yes
Addition: No
Conversion: No

6 Floor 1 - Laundry



Dimensions: 10'4" x 11'6"
Area: 92 sq. ft
Counted as living area: Yes

Heated: Yes
Finished: Yes
Enclosed: Yes
Contiguous: Yes
Permitted: Yes
Wet space: No
Addition: No
Conversion: No

7 Floor 1 - Bedroom



Dimensions: 15'1" x 10'2"
Area: 138 sq. ft
Counted as living area: Yes

Heated: Yes
Finished: Yes
Enclosed: Yes
Contiguous: Yes
Permitted: Yes
Wet space: No
Addition: No
Conversion: No

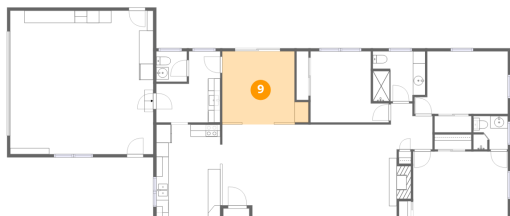
8 Floor 1 - Bath



Dimensions: 4'11" x 4'11"
Area: 24 sq. ft
Counted as living area: Yes

Heated: Yes
Finished: Yes
Enclosed: Yes
Contiguous: Yes
Permitted: Yes
Wet space: Yes
Addition: No
Conversion: No

9 Floor 1 - Dining Area



Dimensions: 14'0" x 11'10"
Area: 146 sq. ft
Counted as living area: Yes

Heated: Yes
Finished: Yes
Enclosed: Yes
Contiguous: Yes
Permitted: Yes
Wet space: No
Addition: No
Conversion: No

10 Floor 1 - Garage



Dimensions: 23'2" x 23'3"
Area: 539 sq. ft
Counted as living area: No

Heated: No
Finished: No
Enclosed: Yes
Contiguous: Yes
Permitted: Yes
Wet space: No
Addition: No
Conversion: No

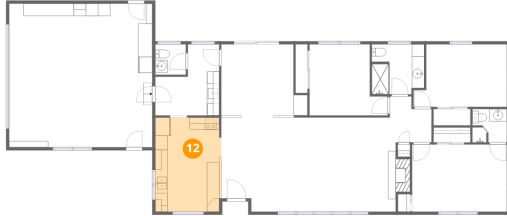
11 Floor 1 - Hall



Dimensions: 6'9" x 7'5"
Area: 42 sq. ft
Counted as living area: Yes

Heated: Yes
Finished: Yes
Enclosed: Yes
Contiguous: Yes
Permitted: Yes
Wet space: No
Addition: No
Conversion: No

12 Floor 1 - Kitchen



Dimensions: 10'8" x 15'3"
Area: 161 sq. ft
Counted as living area: Yes

Heated: Yes
Finished: Yes
Enclosed: Yes
Contiguous: Yes
Permitted: Yes
Wet space: No
Addition: No
Conversion: No