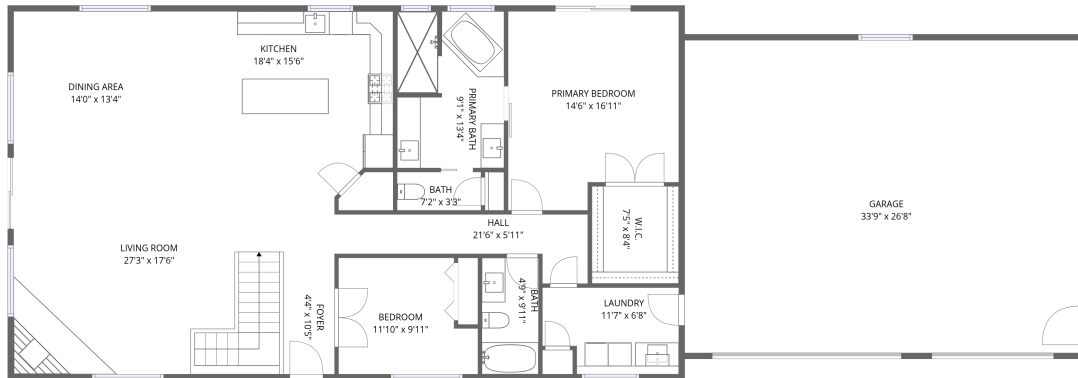
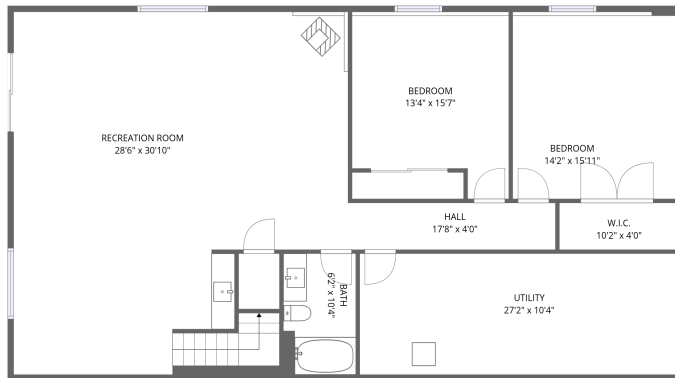


# Home data report

## 20997 Sunnyday Lp, Sturgis, SD, US



1st floor



Basement

**Total Area: 3218 sq. ft**

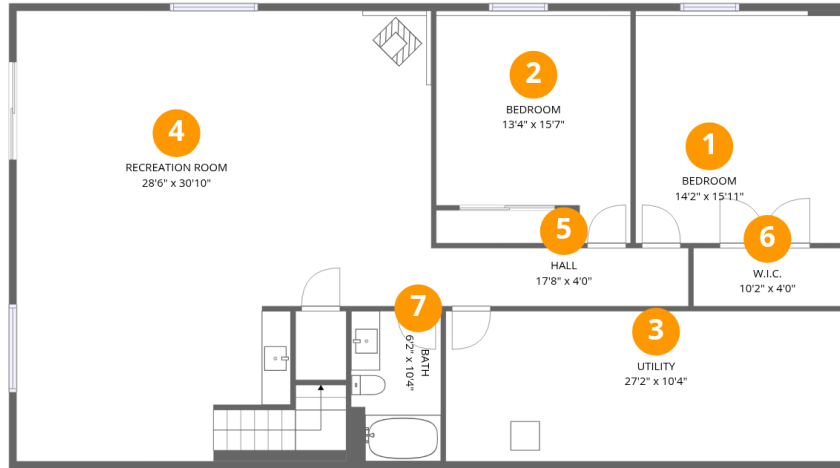
Basement: 1469 sq. ft, 1st Floor: 1749 sq. ft

Excluded: Utility 280 sq. ft, Garage 899 sq. ft, Walls: 225 sq. ft

## Property summary



# 20997 Sunnyday Lp, Sturgis, SD, US



## Room dimensions

Floor 1 Below grade

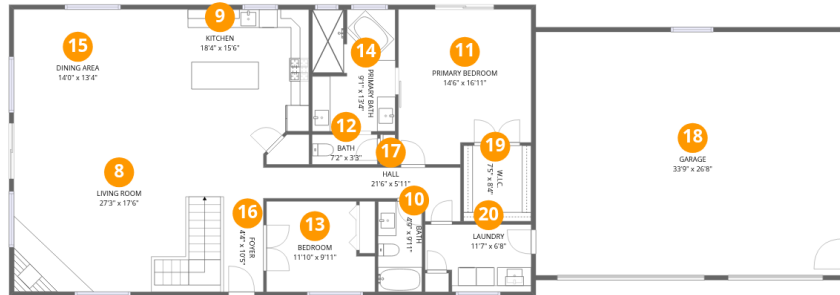
Total: 1469 sqft

Excluded: 280 sqft

#		Dimensions	sqft	Counted as living area
1	Bedroom	14'2" x 15'11"	225 sq. ft	Yes
2	Bedroom	13'4" x 15'7"	208 sq. ft	Yes
3	Utility	27'2" x 10'4"	280 sq. ft	No
4	Recreation Room	28'6" x 30'10"	879 sq. ft	Yes
5	Hall	17'8" x 4'0"	70 sq. ft	Yes
6	W.I.C.	10'2" x 4'0"	41 sq. ft	Yes
7	Bath	6'2" x 10'4"	64 sq. ft	Yes

# Home data report

## 20997 Sunnyday Lp, Sturgis, SD, US



### Room dimensions

Floor 2

Total: 1749sqft

Excluded: 899sqft

#		Dimensions	sqft	Counted as living area
8	Living Room	27'3" x 17'6"	478 sq. ft	Yes
9	Kitchen	18'4" x 15'6"	283 sq. ft	Yes
10	Bath	4'9" x 9'11"	47 sq. ft	Yes
11	Primary Bedroom	14'6" x 16'11"	246 sq. ft	Yes
12	Bath	7'2" x 3'3"	23 sq. ft	Yes
13	Bedroom	11'10" x 9'11"	117 sq. ft	Yes
14	Primary Bath	9'1" x 13'4"	122 sq. ft	Yes
15	Dining Area	14'0" x 13'4"	186 sq. ft	Yes
16	Foyer	4'4" x 10'5"	45 sq. ft	Yes
17	Hall	21'6" x 5'11"	127 sq. ft	Yes
18	Garage	33'9" x 26'8"	899 sq. ft	No

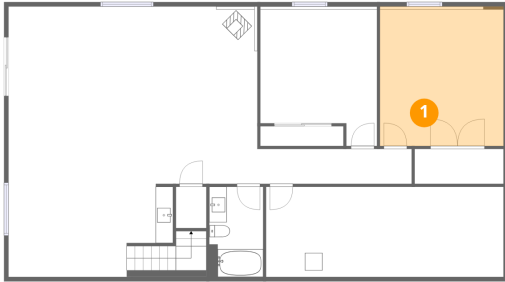
Home data report

**20997 Sunnyday Lp,Sturgis,SD,US**

#		Dimensions	sqft	Counted as living area
19	W.I.C.	7'5" x 8'4"	61 sq. ft	Yes
20	Laundry	11'7" x 6'8"	78 sq. ft	Yes

### 1 Floor 1 - Bedroom

---

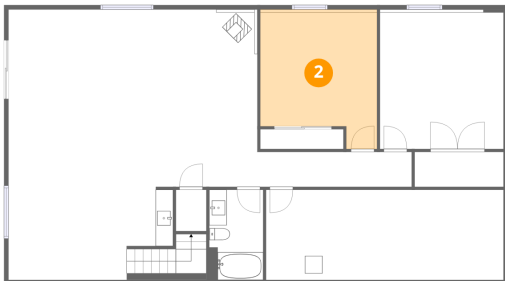


Dimensions: 14'2" x 15'11"  
Area: 225 sq. ft  
Counted as living area: Yes

Heated: Yes  
Finished: Yes  
Enclosed: Yes  
Contiguous: Yes  
Permitted: Yes  
Wet space: No  
Addition: No  
Conversion: No

### 2 Floor 1 - Bedroom

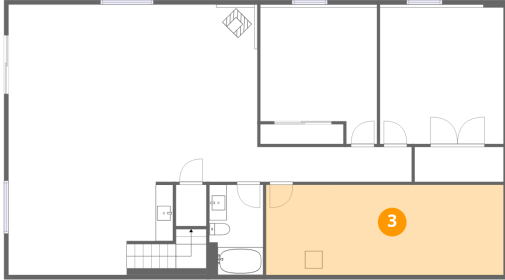
---



Dimensions: 13'4" x 15'7"  
Area: 208 sq. ft  
Counted as living area: Yes

Heated: Yes  
Finished: Yes  
Enclosed: Yes  
Contiguous: Yes  
Permitted: Yes  
Wet space: No  
Addition: No  
Conversion: No

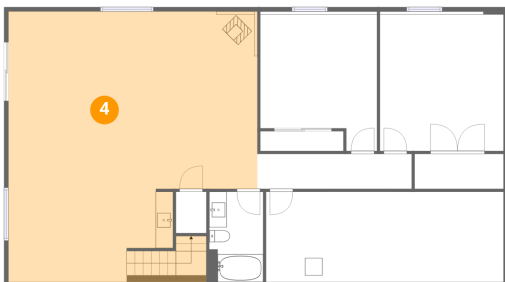
### 3 Floor 1 - Utility



Dimensions: 27'2" x 10'4"  
Area: 280 sq. ft  
Counted as living area: No

Heated: Yes  
Finished: No  
Enclosed: Yes  
Contiguous: Yes  
Permitted: Yes  
Wet space: No  
Addition: No  
Conversion: No

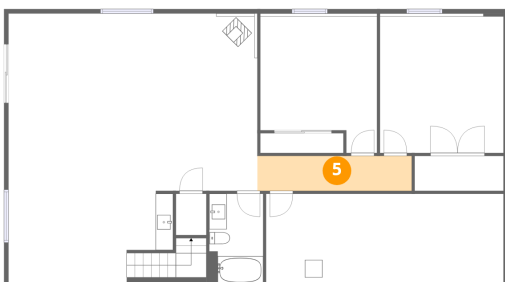
### 4 Floor 1 - Recreation Room



Dimensions: 28'6" x 30'10"  
Area: 879 sq. ft  
Counted as living area: Yes

Heated: Yes  
Finished: Yes  
Enclosed: Yes  
Contiguous: Yes  
Permitted: Yes  
Wet space: No  
Addition: No  
Conversion: No

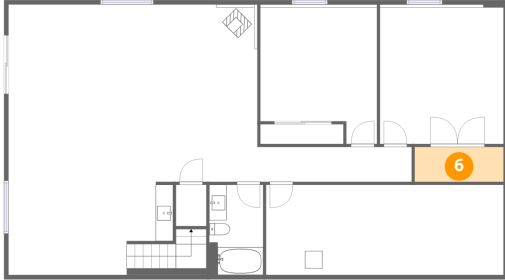
### 5 Floor 1 - Hall



Dimensions: 17'8" x 4'0"  
Area: 70 sq. ft  
Counted as living area: Yes

Heated: Yes  
Finished: Yes  
Enclosed: Yes  
Contiguous: Yes  
Permitted: Yes  
Wet space: No  
Addition: No  
Conversion: No

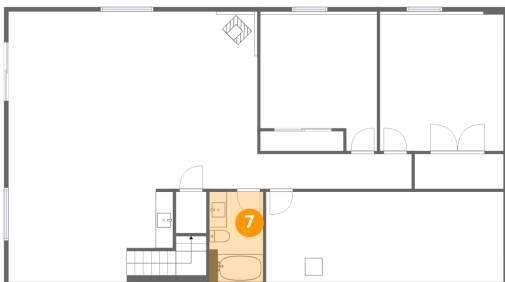
**6** Floor 1 - W.I.C.



Dimensions: 10'2" x 4'0"  
Area: 41 sq. ft  
Counted as living area: Yes

Heated: Yes  
Finished: Yes  
Enclosed: Yes  
Contiguous: Yes  
Permitted: Yes  
Wet space: No  
Addition: No  
Conversion: No

**7** Floor 1 - Bath



Dimensions: 6'2" x 10'4"  
Area: 64 sq. ft  
Counted as living area: Yes

Heated: Yes  
Finished: Yes  
Enclosed: Yes  
Contiguous: Yes  
Permitted: Yes  
Wet space: Yes  
Addition: No  
Conversion: No

**8** Floor 2 - Living Room



Dimensions: 27'3" x 17'6"  
Area: 478 sq. ft  
Counted as living area: Yes

Heated: Yes  
Finished: Yes  
Enclosed: Yes  
Contiguous: Yes  
Permitted: Yes  
Wet space: No  
Addition: No  
Conversion: No

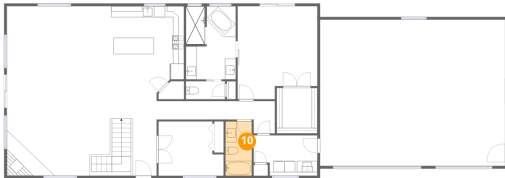
## 9 Floor 2 - Kitchen



Dimensions: 18'4" x 15'6"  
Area: 283 sq. ft  
Counted as living area: Yes

Heated: Yes  
Finished: Yes  
Enclosed: Yes  
Contiguous: Yes  
Permitted: Yes  
Wet space: No  
Addition: No  
Conversion: No

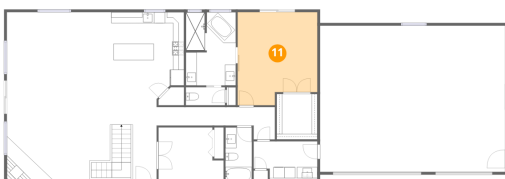
## 10 Floor 2 - Bath



Dimensions: 4'9" x 9'11"  
Area: 47 sq. ft  
Counted as living area: Yes

Heated: Yes  
Finished: Yes  
Enclosed: Yes  
Contiguous: Yes  
Permitted: Yes  
Wet space: Yes  
Addition: No  
Conversion: No

## 11 Floor 2 - Primary Bedroom



Dimensions: 14'6" x 16'11"  
Area: 246 sq. ft  
Counted as living area: Yes

Heated: Yes  
Finished: Yes  
Enclosed: Yes  
Contiguous: Yes  
Permitted: Yes  
Wet space: No  
Addition: No  
Conversion: No

## 12 Floor 2 - Bath



Dimensions: 7'2" x 3'3"  
Area: 23 sq. ft  
Counted as living area: Yes

Heated: Yes  
Finished: Yes  
Enclosed: Yes  
Contiguous: Yes  
Permitted: Yes  
Wet space: Yes  
Addition: No  
Conversion: No

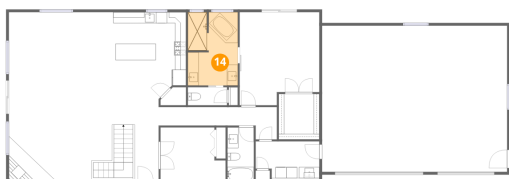
## 13 Floor 2 - Bedroom



Dimensions: 11'10" x 9'11"  
Area: 117 sq. ft  
Counted as living area: Yes

Heated: Yes  
Finished: Yes  
Enclosed: Yes  
Contiguous: Yes  
Permitted: Yes  
Wet space: No  
Addition: No  
Conversion: No

## 14 Floor 2 - Primary Bath



Dimensions: 9'1" x 13'4"  
Area: 122 sq. ft  
Counted as living area: Yes

Heated: Yes  
Finished: Yes  
Enclosed: Yes  
Contiguous: Yes  
Permitted: Yes  
Wet space: Yes  
Addition: No  
Conversion: No

### 15 Floor 2 - Dining Area



Dimensions: 14'0" x 13'4"  
Area: 186 sq. ft  
Counted as living area: Yes

Heated: Yes  
Finished: Yes  
Enclosed: Yes  
Contiguous: Yes  
Permitted: Yes  
Wet space: No  
Addition: No  
Conversion: No

### 16 Floor 2 - Foyer



Dimensions: 4'4" x 10'5"  
Area: 45 sq. ft  
Counted as living area: Yes

Heated: Yes  
Finished: Yes  
Enclosed: Yes  
Contiguous: Yes  
Permitted: Yes  
Wet space: No  
Addition: No  
Conversion: No

### 17 Floor 2 - Hall



Dimensions: 21'6" x 5'11"  
Area: 127 sq. ft  
Counted as living area: Yes

Heated: Yes  
Finished: Yes  
Enclosed: Yes  
Contiguous: Yes  
Permitted: Yes  
Wet space: No  
Addition: No  
Conversion: No

## 18 Floor 2 - Garage



Dimensions: 33'9" x 26'8"  
Area: 899 sq. ft  
Counted as living area: No

Heated: No  
Finished: No  
Enclosed: Yes  
Contiguous: Yes  
Permitted: Yes  
Wet space: No  
Addition: No  
Conversion: No

## 19 Floor 2 - W.I.C.



Dimensions: 7'5" x 8'4"  
Area: 61 sq. ft  
Counted as living area: Yes

Heated: Yes  
Finished: Yes  
Enclosed: Yes  
Contiguous: Yes  
Permitted: Yes  
Wet space: No  
Addition: No  
Conversion: No

## 20 Floor 2 - Laundry



Dimensions: 11'7" x 6'8"  
Area: 78 sq. ft  
Counted as living area: Yes

Heated: Yes  
Finished: Yes  
Enclosed: Yes  
Contiguous: Yes  
Permitted: Yes  
Wet space: No  
Addition: No  
Conversion: No