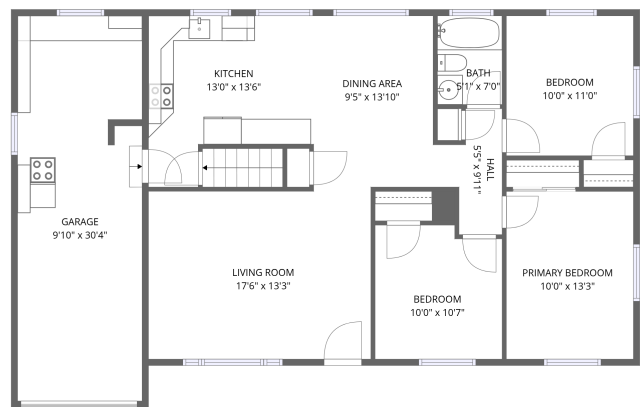
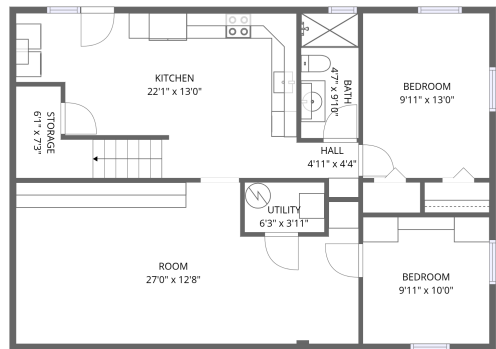


Home report

1190 Youngfield Street, Ashwood Park, Applewood, Golden,
Jefferson County, Colorado, United States, 80401



FLOOR 2



FLOOR 1


Total Area: 1949 sq. ft


Below Ground: 915 sq. ft, Floor 2: 1034 sq. ft

Excluded: Utility 25 sq. ft, Storage 33 sq. ft, Garage 296 sq. ft, Walls: 159 sq. ft

Property summary

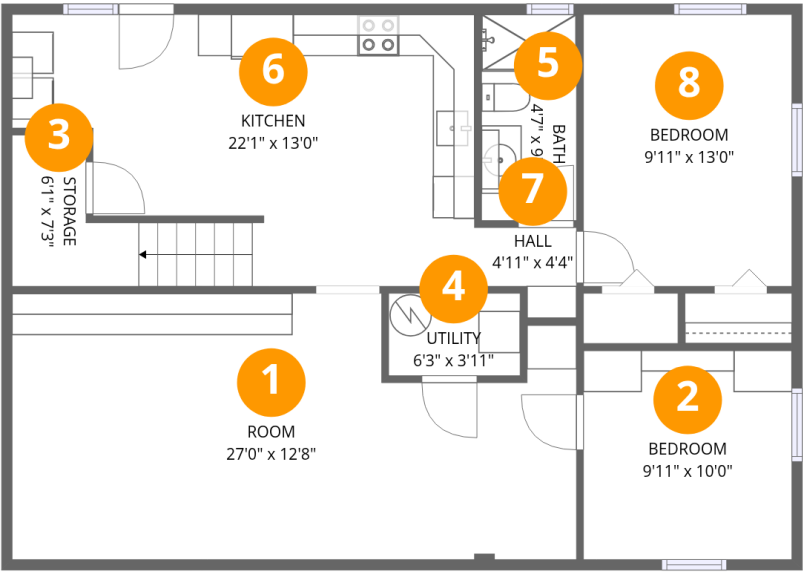
 **2** Floors

 **5** Bedrooms

 **2** Bathrooms

 **1** Garages

1190 Youngfield Street, Ashwood Park, Applewood, Golden,
Jefferson County, Colorado, United States, 80401



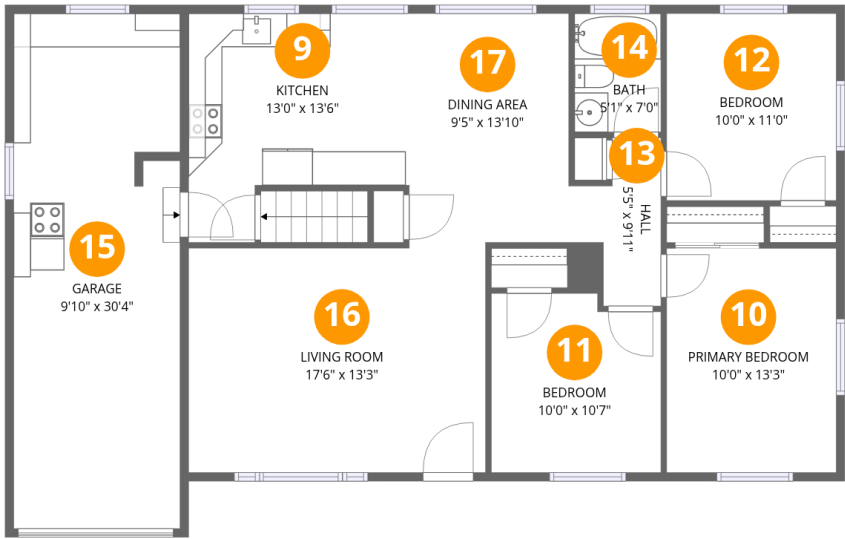
Room dimensions

Floor 1 Below ground Total:915sqft Excluded: 58sqft

#		Max Dimensions	sqft	Included
1	Room	27'0" x 12'8"	310 sq. ft	Yes
2	Bedroom	9'11" x 10'0"	100 sq. ft	Yes
3	Storage	6'1" x 7'3"	33 sq. ft	No
4	Utility	6'3" x 3'11"	25 sq. ft	No
5	Bath	4'7" x 9'10"	45 sq. ft	Yes
6	Kitchen	22'1" x 13'0"	250 sq. ft	Yes
7	Hall	4'11" x 4'4"	17 sq. ft	Yes
8	Bedroom	9'11" x 13'0"	130 sq. ft	Yes

Home report

1190 Youngfield Street, Ashwood Park, Applewood, Golden,
Jefferson County, Colorado, United States, 80401



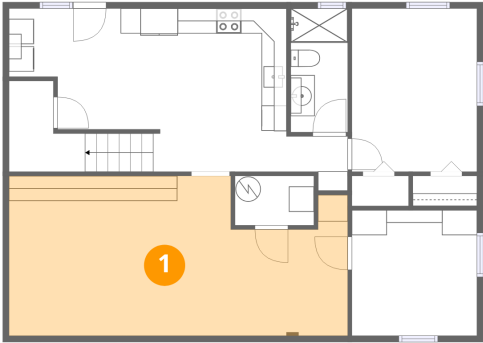
Room dimensions

Floor 2 Total:1034sqft Excluded: 296sqft

#		Max Dimensions	sqft	Included
9	Kitchen	13'0" x 13'6"	145 sq. ft	Yes
10	Primary Bedroom	10'0" x 13'3"	132 sq. ft	Yes
11	Bedroom	10'0" x 10'7"	102 sq. ft	Yes
12	Bedroom	10'0" x 11'0"	110 sq. ft	Yes
13	Hall	5'5" x 9'11"	39 sq. ft	Yes
14	Bath	5'1" x 7'0"	36 sq. ft	Yes
15	Garage	9'10" x 30'4"	296 sq. ft	No
16	Living Room	17'6" x 13'3"	232 sq. ft	Yes
17	Dining Area	9'5" x 13'10"	129 sq. ft	Yes

1190 Youngfield Street, Ashwood Park, Applewood, Golden,
Jefferson County, Colorado, United States, 80401

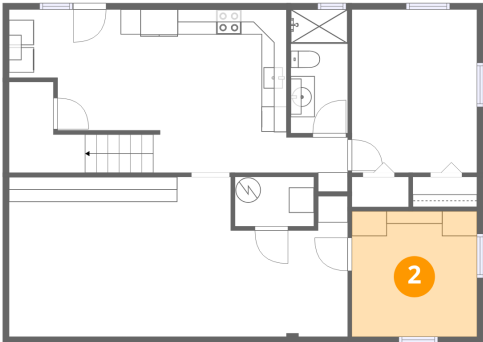
1 Floor 1 - Room



Max Dimensions: 27'0" x 12'8"
Calculated Area: 310 sq. ft
Included: Yes

Heated: Yes
Finished: Yes
Enclosed: Yes
Contiguous: Yes
Permitted: Yes
Wet space: No
Addition: No
Conversion: No

2 Floor 1 - Bedroom

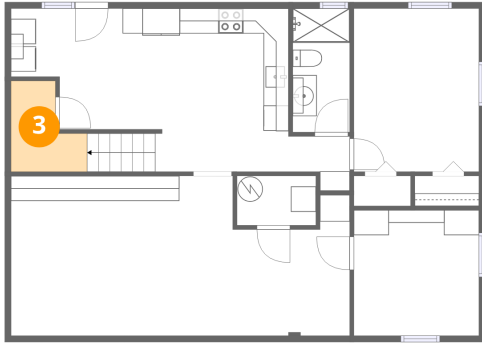


Max Dimensions: 9'11" x 10'0"
Calculated Area: 100 sq. ft
Included: Yes

Heated: Yes
Finished: Yes
Enclosed: Yes
Contiguous: Yes
Permitted: Yes
Wet space: No
Addition: No
Conversion: No

1190 Youngfield Street, Ashwood Park, Applewood, Golden,
Jefferson County, Colorado, United States, 80401

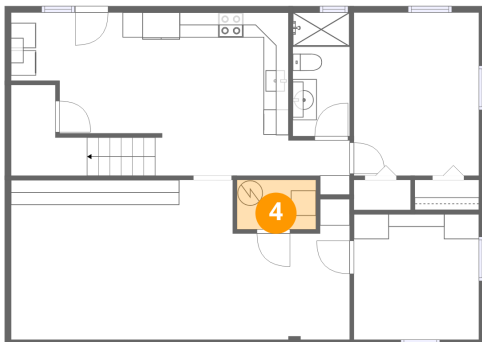
3 Floor 1 - Storage



Max Dimensions: 6'1" x 7'3"
Calculated Area: 33 sq. ft
Included: No

Heated: No
Finished: No
Enclosed: No
Contiguous: Yes
Permitted: Yes
Wet space: No
Addition: No
Conversion: No

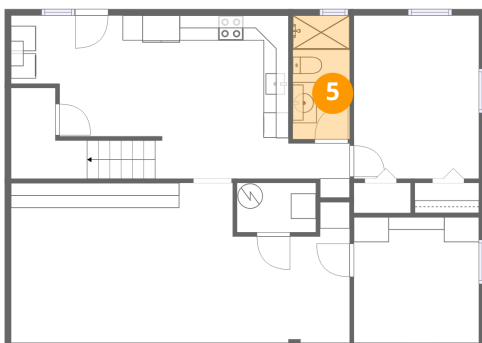
4 Floor 1 - Utility



Max Dimensions: 6'3" x 3'11"
Calculated Area: 25 sq. ft
Included: No

Heated: Yes
Finished: No
Enclosed: Yes
Contiguous: Yes
Permitted: Yes
Wet space: No
Addition: No
Conversion: No

5 Floor 1 - Bath



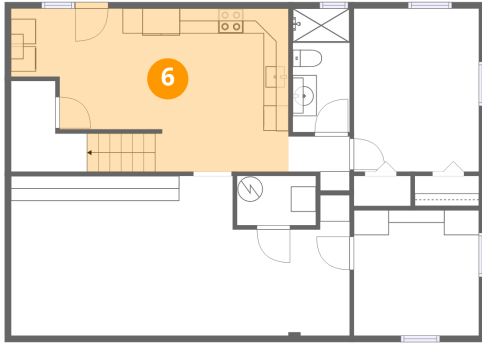
Max Dimensions: 4'7" x 9'10"
Calculated Area: 45 sq. ft
Included: Yes

Heated: Yes
Finished: Yes
Enclosed: Yes
Contiguous: Yes
Permitted: Yes
Wet space: Yes
Addition: No
Conversion: No

Home report

1190 Youngfield Street, Ashwood Park, Applewood, Golden,
Jefferson County, Colorado, United States, 80401

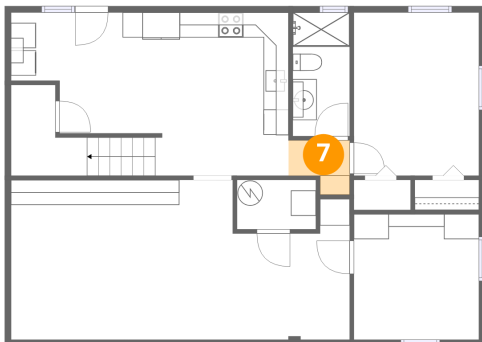
6 Floor 1 - Kitchen



Max Dimensions: 22'1" x 13'0"
Calculated Area: 250 sq. ft
Included: Yes

Heated: Yes
Finished: Yes
Enclosed: Yes
Contiguous: Yes
Permitted: Yes
Wet space: No
Addition: No
Conversion: No

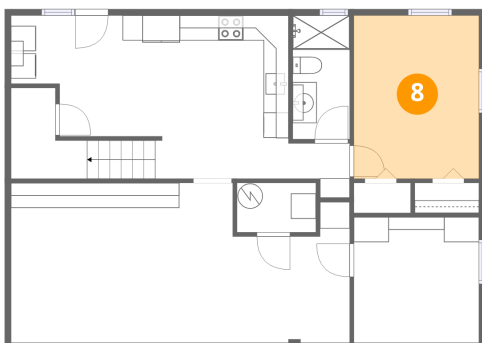
7 Floor 1 - Hall



Max Dimensions: 4'11" x 4'4"
Calculated Area: 17 sq. ft
Included: Yes

Heated: Yes
Finished: Yes
Enclosed: Yes
Contiguous: Yes
Permitted: Yes
Wet space: No
Addition: No
Conversion: No

8 Floor 1 - Bedroom

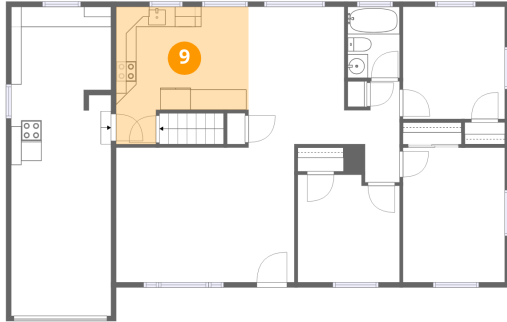


Max Dimensions: 9'11" x 13'0"
Calculated Area: 130 sq. ft
Included: Yes

Heated: Yes
Finished: Yes
Enclosed: Yes
Contiguous: Yes
Permitted: Yes
Wet space: No
Addition: No
Conversion: No

1190 Youngfield Street, Ashwood Park, Applewood, Golden,
Jefferson County, Colorado, United States, 80401

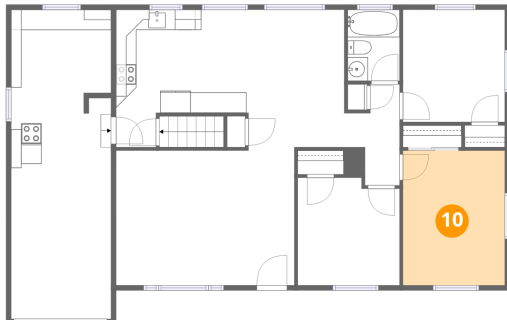
9 Floor 2 - Kitchen



Max Dimensions: 13'0" x 13'6"
Calculated Area: 145 sq. ft
Included: Yes

Heated: Yes
Finished: Yes
Enclosed: Yes
Contiguous: Yes
Permitted: Yes
Wet space: No
Addition: No
Conversion: No

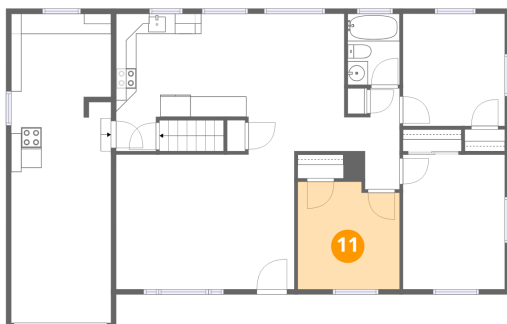
10 Floor 2 - Primary Bedroom



Max Dimensions: 10'0" x 13'3"
Calculated Area: 132 sq. ft
Included: Yes

Heated: Yes
Finished: Yes
Enclosed: Yes
Contiguous: Yes
Permitted: Yes
Wet space: No
Addition: No
Conversion: No

11 Floor 2 - Bedroom



Max Dimensions: 10'0" x 10'7"
Calculated Area: 102 sq. ft
Included: Yes

Heated: Yes
Finished: Yes
Enclosed: Yes
Contiguous: Yes
Permitted: Yes
Wet space: No
Addition: No
Conversion: No

1190 Youngfield Street, Ashwood Park, Applewood, Golden,
Jefferson County, Colorado, United States, 80401

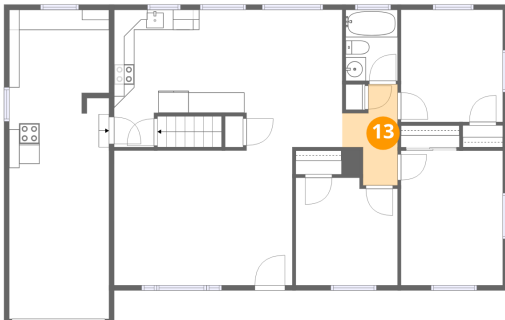
12 Floor 2 - Bedroom



Max Dimensions: 10'0" x 11'0"
Calculated Area: 110 sq. ft
Included: Yes

Heated: Yes
Finished: Yes
Enclosed: Yes
Contiguous: Yes
Permitted: Yes
Wet space: No
Addition: No
Conversion: No

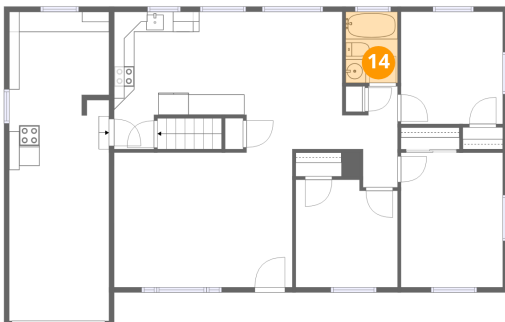
13 Floor 2 - Hall



Max Dimensions: 5'5" x 9'11"
Calculated Area: 39 sq. ft
Included: Yes

Heated: Yes
Finished: Yes
Enclosed: Yes
Contiguous: Yes
Permitted: Yes
Wet space: No
Addition: No
Conversion: No

14 Floor 2 - Bath



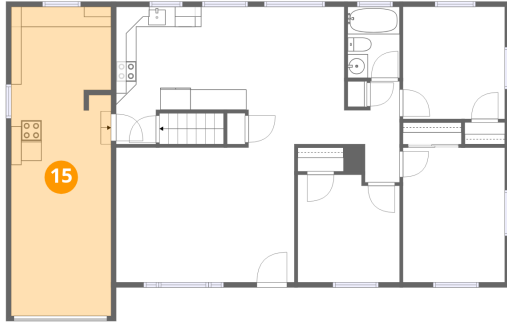
Max Dimensions: 5'1" x 7'0"
Calculated Area: 36 sq. ft
Included: Yes

Heated: Yes
Finished: Yes
Enclosed: Yes
Contiguous: Yes
Permitted: Yes
Wet space: Yes
Addition: No
Conversion: No

Home report

1190 Youngfield Street, Ashwood Park, Applewood, Golden,
Jefferson County, Colorado, United States, 80401

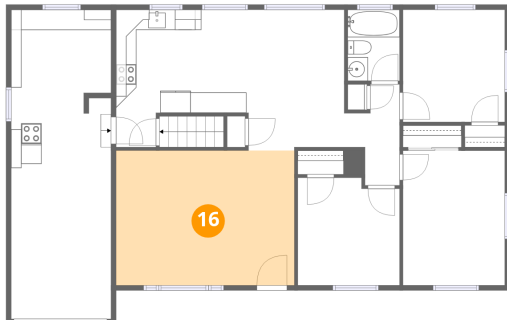
15 Floor 2 - Garage



Max Dimensions: 9'10" x 30'4"
Calculated Area: 296 sq. ft
Included: No

Heated: No
Finished: No
Enclosed: Yes
Contiguous: Yes
Permitted: Yes
Wet space: No
Addition: No
Conversion: No

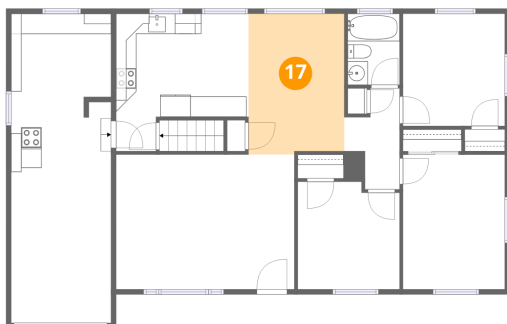
16 Floor 2 - Living Room



Max Dimensions: 17'6" x 13'3"
Calculated Area: 232 sq. ft
Included: Yes

Heated: Yes
Finished: Yes
Enclosed: Yes
Contiguous: Yes
Permitted: Yes
Wet space: No
Addition: No
Conversion: No

17 Floor 2 - Dining Area



Max Dimensions: 9'5" x 13'10"
Calculated Area: 129 sq. ft
Included: Yes

Heated: Yes
Finished: Yes
Enclosed: Yes
Contiguous: Yes
Permitted: Yes
Wet space: No
Addition: No
Conversion: No