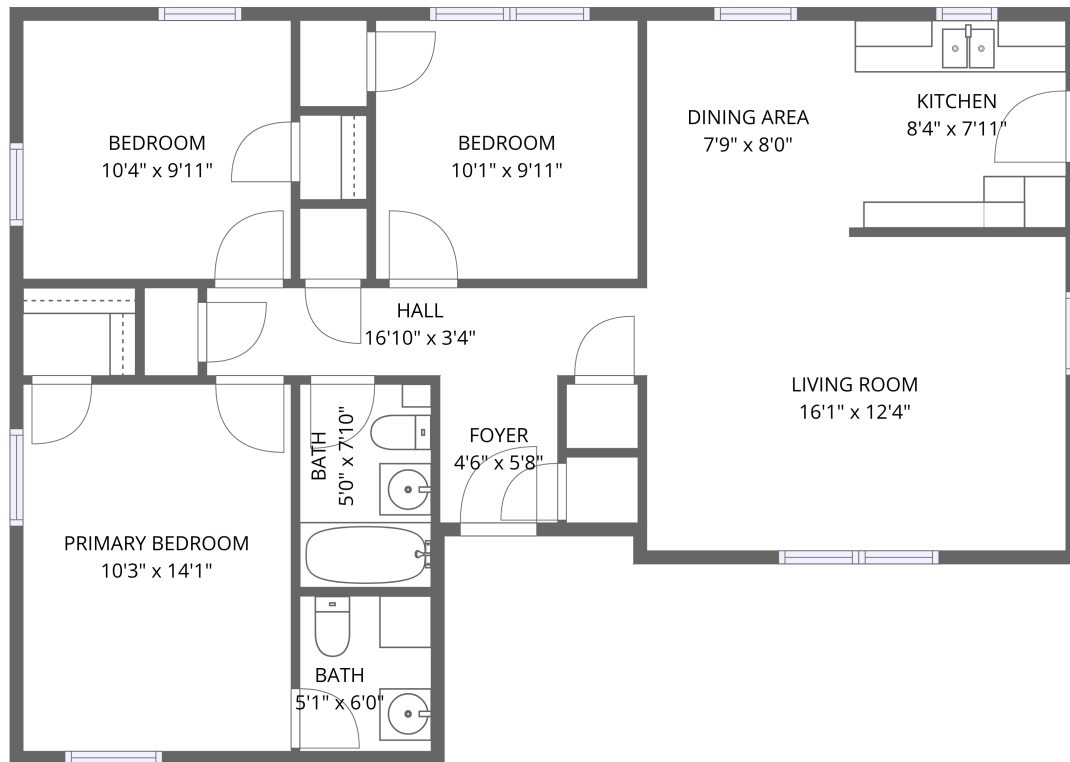


Home data report

500 Depot Street, Meridian, Texas, United States



1st floor

Total Area: 928 sq. ft

1st Floor: 928 sq. ft

Excluded: Walls: 70 sq. ft

Property summary

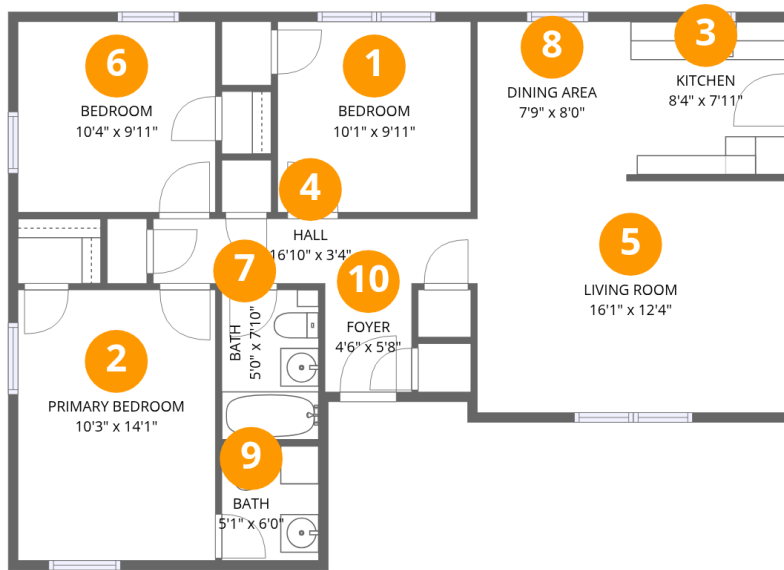
 **1** Floors

 **3** Bedrooms

 **1** Bathrooms

 **1** Half baths

500 Depot Street, Meridian, Texas, United States



Room dimensions

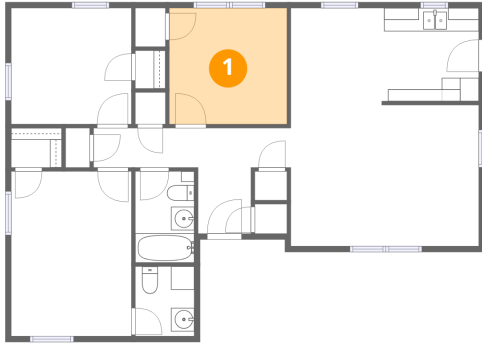
Floor 1

Total: 928 sqft

Excluded: 0 sqft

#		Dimensions	sqft	Counted as living area
1	Bedroom	10'1" x 9'11"	100 sq. ft	Yes
2	Primary Bedroom	10'3" x 14'1"	145 sq. ft	Yes
3	Kitchen	8'4" x 7'11"	66 sq. ft	Yes
4	Hall	16'10" x 3'4"	56 sq. ft	Yes
5	Living Room	16'1" x 12'4"	199 sq. ft	Yes
6	Bedroom	10'4" x 9'11"	102 sq. ft	Yes
7	Bath	5'0" x 7'10"	39 sq. ft	Yes
8	Dining Area	7'9" x 8'0"	62 sq. ft	Yes
9	Bath	5'1" x 6'0"	30 sq. ft	Yes
10	Foyer	4'6" x 5'8"	26 sq. ft	Yes

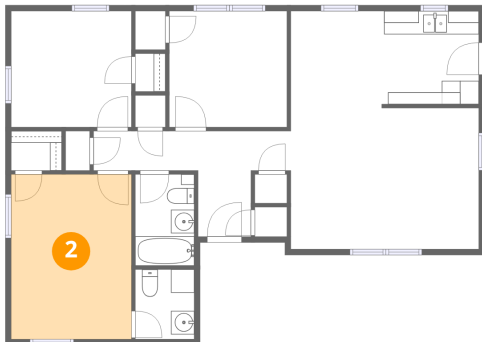
1 Floor 1 - Bedroom



Dimensions: 10'1" x 9'11"
Area: 100 sq. ft
Counted as living area: Yes

Heated: Yes
Finished: Yes
Enclosed: Yes
Contiguous: Yes
Permitted: Yes
Wet space: No
Addition: No
Conversion: No

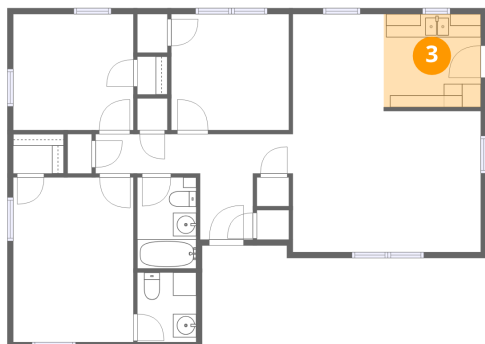
2 Floor 1 - Primary Bedroom



Dimensions: 10'3" x 14'1"
Area: 145 sq. ft
Counted as living area: Yes

Heated: Yes
Finished: Yes
Enclosed: Yes
Contiguous: Yes
Permitted: Yes
Wet space: No
Addition: No
Conversion: No

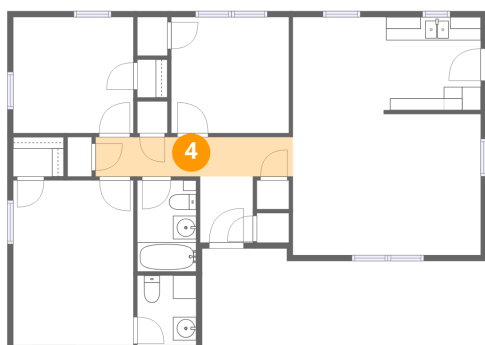
3 Floor 1 - Kitchen



Dimensions: 8'4" x 7'11"
Area: 66 sq. ft
Counted as living area: Yes

Heated: Yes
Finished: Yes
Enclosed: Yes
Contiguous: Yes
Permitted: Yes
Wet space: No
Addition: No
Conversion: No

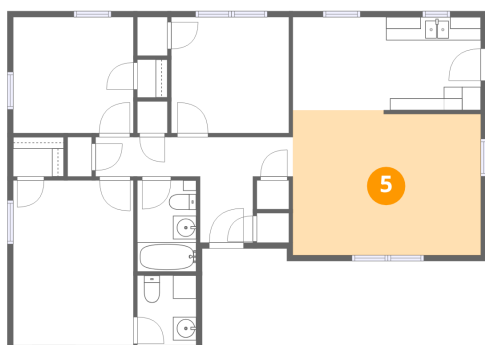
4 Floor 1 - Hall



Dimensions: 16'10" x 3'4"
Area: 56 sq. ft
Counted as living area: Yes

Heated: Yes
Finished: Yes
Enclosed: Yes
Contiguous: Yes
Permitted: Yes
Wet space: No
Addition: No
Conversion: No

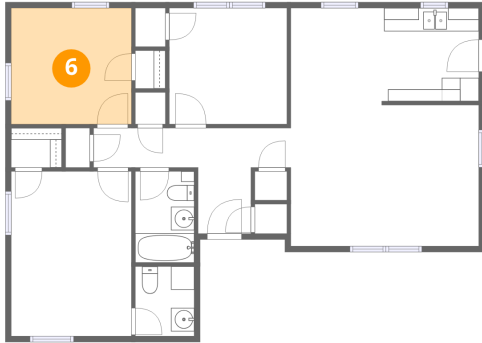
5 Floor 1 - Living Room



Dimensions: 16'1" x 12'4"
Area: 199 sq. ft
Counted as living area: Yes

Heated: Yes
Finished: Yes
Enclosed: Yes
Contiguous: Yes
Permitted: Yes
Wet space: No
Addition: No
Conversion: No

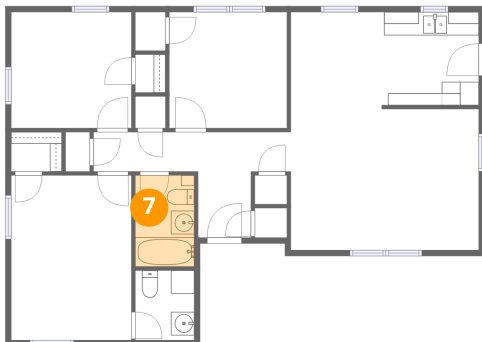
6 Floor 1 - Bedroom



Dimensions: 10'4" x 9'11"
Area: 102 sq. ft
Counted as living area: Yes

Heated: Yes
Finished: Yes
Enclosed: Yes
Contiguous: Yes
Permitted: Yes
Wet space: No
Addition: No
Conversion: No

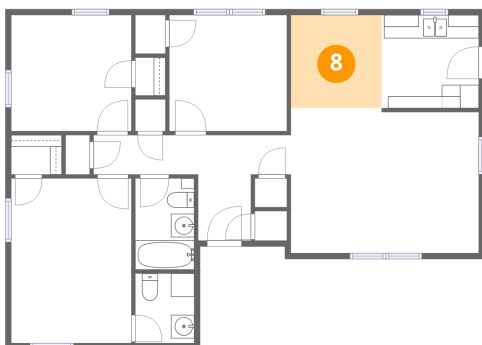
7 Floor 1 - Bath



Dimensions: 5'0" x 7'10"
Area: 39 sq. ft
Counted as living area: Yes

Heated: Yes
Finished: Yes
Enclosed: Yes
Contiguous: Yes
Permitted: Yes
Wet space: Yes
Addition: No
Conversion: No

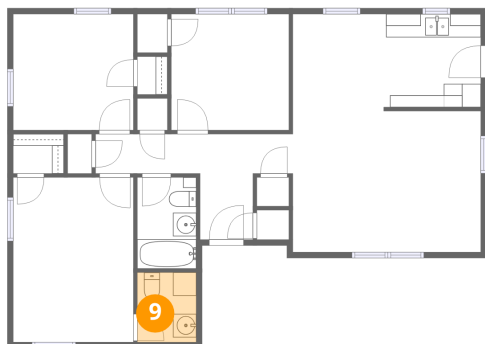
8 Floor 1 - Dining Area



Dimensions: 7'9" x 8'0"
Area: 62 sq. ft
Counted as living area: Yes

Heated: Yes
Finished: Yes
Enclosed: Yes
Contiguous: Yes
Permitted: Yes
Wet space: No
Addition: No
Conversion: No

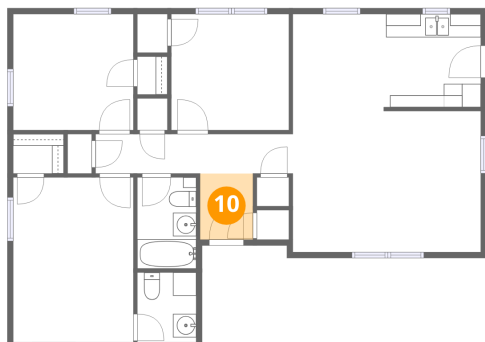
9 Floor 1 - Bath



Dimensions: 5'1" x 6'0"
Area: 30 sq. ft
Counted as living area: Yes

Heated: Yes
Finished: Yes
Enclosed: Yes
Contiguous: Yes
Permitted: Yes
Wet space: Yes
Addition: No
Conversion: No

10 Floor 1 - Foyer



Dimensions: 4'6" x 5'8"
Area: 26 sq. ft
Counted as living area: Yes

Heated: Yes
Finished: Yes
Enclosed: Yes
Contiguous: Yes
Permitted: Yes
Wet space: No
Addition: No
Conversion: No