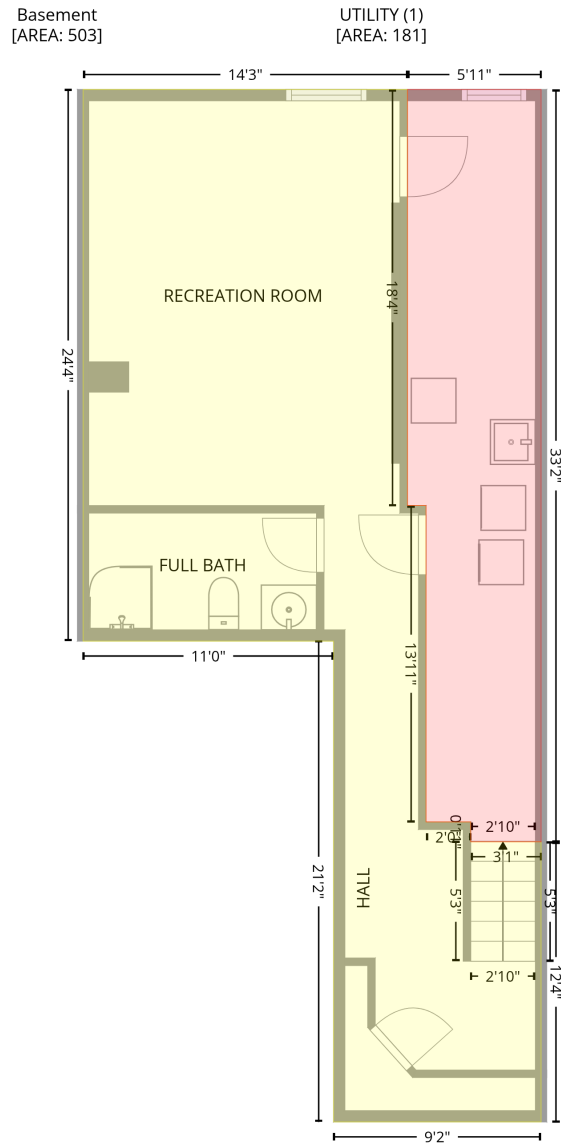


117 Aird Court, Milton, Halton County, Ontario, Canada, L9T 8B6

Gross Living Area: 1513 sq. ft

Level 1 - Below Grade



Space	Area (sq. ft)	Calculation <small>Coordinate Polygon Area Algorithm using inches</small>
Basement (Living area)	503	$-\left((338 + 338) * (-79.8 - 140.3) + (338 + 347.8) * (140.3 - 140.3) + (347.8 + 347.8) * (140.3 - 307.6) + (347.8 + 371.4) * (307.6 - 307.6) + (371.4 + 371.4) * (307.6 - 318.1) + (371.4 + 408.6) * (318.1 - 318.1) + (408.6 + 408.6) * (318.1 - 466.3) + (408.6 + 298.9) * (466.3 - 466.3) + (298.9 + 298.9) * (466.3 - 212) + (298.9 + 166.5) * (212 - 212) + (166.5 + 166.5) * (212 - -79.8) + (166.5 + 338) * (-79.8 - -79.8)) * 0.5 * 0.00694$

117 Aird Court, Milton, Halton County, Ontario, Canada, L9T 8B6

Gross Living Area: 1513 sq. ft

Level 1 - Below Grade

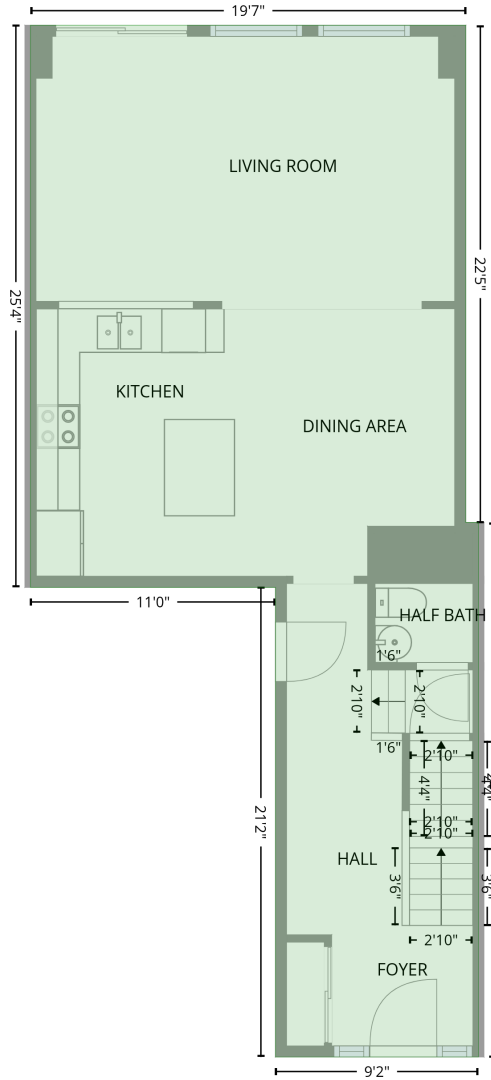
Space	Area (sq. ft)	Calculation <small>Coordinate Polygon Area Algorithm using inches</small>
UTILITY (Non-living area)	181	$-((408.6 + 408.6) * (-79.8 - 318.1) + (408.6 + 371.4) * (318.1 - 318.1) + (371.4 + 371.4) * (318.1 - 307.6) + (371.4 + 347.8) * (307.6 - 307.6) + (347.8 + 347.8) * (307.6 - 140.3) + (347.8 + 338) * (140.3 - 140.3) + (338 + 338) * (140.3 - -79.8) + (338 + 408.6) * (-79.8 - -79.8)) * 0.5 * 0.00694$

117 Aird Court, Milton, Halton County, Ontario, Canada, L9T 8B6

Gross Living Area: 1513 sq. ft

Level 2

1st floor
[AREA: 693]



Space	Area (sq. ft)	Calculation <small>Coordinate Polygon Area Algorithm using inches</small>
1st floor (Living area)	693	$-\left((401.8 + 401.8) * (-92.4 - 176.9) + (401.8 + 408.6) * (176.9 - 176.9) + (408.6 + 408.6) * (176.9 - 466.3) + (408.6 + 298.9) * (466.3 - 466.3) + (298.9 + 298.9) * (466.3 - 212) + (298.9 + 166.5) * (212 - 212) + (166.5 + 166.5) * (212 - -92.4) + (166.5 + 401.8) * (-92.4 - -92.4)\right) * 0.5 * 0.00694$

117 Aird Court, Milton, Halton County, Ontario, Canada, L9T 8B6

Gross Living Area: 1513 sq. ft

Level 3

Space	Area (sq. ft)	Calculation <small>Coordinate Polygon Area Algorithm using inches</small>
OPEN TO BELOW (Non-living area)	24	$-\left((367.5 + 367.5) * (268.3 - 345.8) + (367.5 + 351) * (345.8 - 345.8) + (351 + 350.8) * (345.8 - 345.7) + (350.8 + 327.6) * (345.7 - 322.3) + (327.6 + 315) * (322.3 - 310) + (315 + 315.1) * (310 - 310) + (315.1 + 315.1) * (310 - 268.3) + (315.1 + 367.5) * (268.3 - 268.3)\right) * 0.5 * 0.00694$