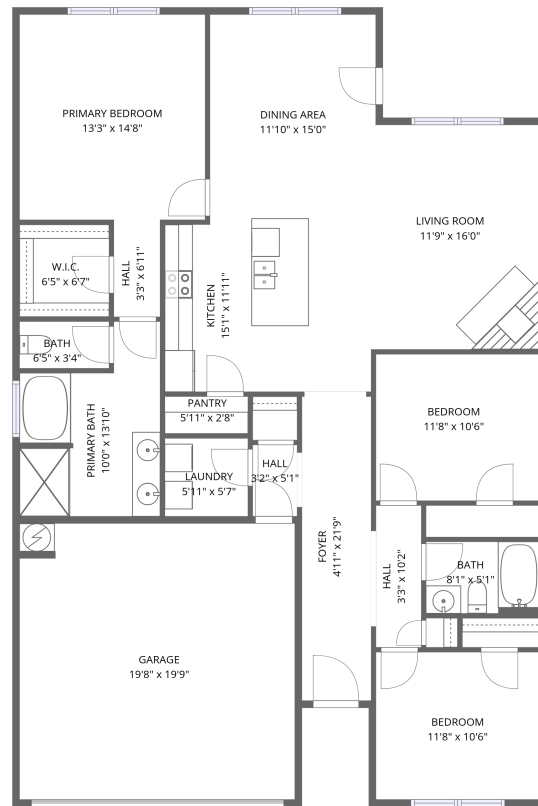


282 Falcon Ridge Dr, New Market, AL, US



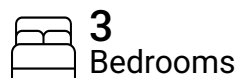
1st floor

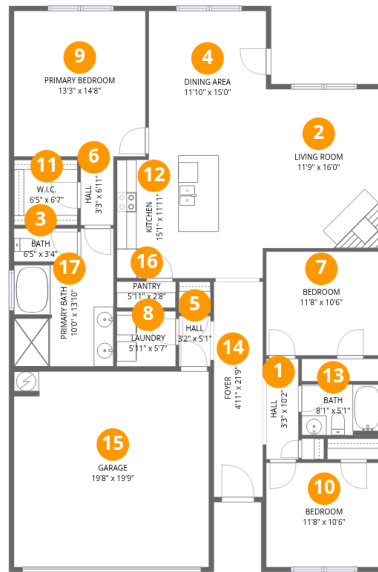
Total Area: 1542 sq. ft

1st Floor: 1542 sq. ft

Excluded: Garage 386 sq. ft, Walls: 119 sq. ft

Property summary





Room dimensions

Floor 1

Total: 1542sqft

Excluded: 386sqft

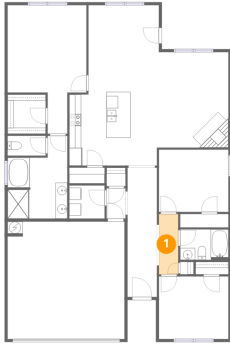
#		Dimensions	sqft	Counted as living area
1	Hall	3'3" x 10'2"	33 sq. ft	Yes
2	Living Room	11'9" x 16'0"	188 sq. ft	Yes
3	Bath	6'5" x 3'4"	21 sq. ft	Yes
4	Dining Area	11'10" x 15'0"	178 sq. ft	Yes
5	Hall	3'2" x 5'1"	16 sq. ft	Yes
6	Hall	3'3" x 6'11"	23 sq. ft	Yes
7	Bedroom	11'8" x 10'6"	122 sq. ft	Yes
8	Laundry	5'11" x 5'7"	33 sq. ft	Yes
9	Primary Bedroom	13'3" x 14'8"	194 sq. ft	Yes
10	Bedroom	11'8" x 10'6"	123 sq. ft	Yes
11	W.I.C.	6'5" x 6'7"	42 sq. ft	Yes

Home data report

282 Falcon Ridge Dr, New Market, AL, US

#		Dimensions	sqft	Counted as living area
12	Kitchen	15'1" x 11'11"	179 sq. ft	Yes
13	Bath	8'1" x 5'1"	41 sq. ft	Yes
14	Foyer	4'11" x 21'9"	107 sq. ft	Yes
15	Garage	19'8" x 19'9"	387 sq. ft	No
16	Pantry	5'11" x 2'8"	16 sq. ft	Yes
17	Primary Bath	10'0" x 13'10"	139 sq. ft	Yes

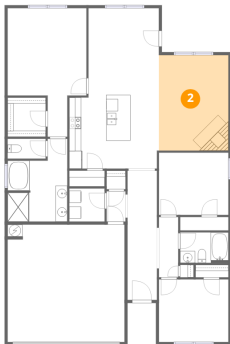
1 Floor 1 - Hall



Dimensions: 3'3" x 10'2"
Area: 33 sq. ft
Counted as living area: Yes

Heated: Yes
Finished: Yes
Enclosed: Yes
Contiguous: Yes
Permitted: Yes
Wet space: No
Addition: No
Conversion: No

2 Floor 1 - Living Room



Dimensions: 11'9" x 16'0"
Area: 188 sq. ft
Counted as living area: Yes

Heated: Yes
Finished: Yes
Enclosed: Yes
Contiguous: Yes
Permitted: Yes
Wet space: No
Addition: No
Conversion: No

3 Floor 1 - Bath



Dimensions: 6'5" x 3'4"
Area: 21 sq. ft
Counted as living area: Yes

Heated: Yes
Finished: Yes
Enclosed: Yes
Contiguous: Yes
Permitted: Yes
Wet space: Yes
Addition: No
Conversion: No

4 Floor 1 - Dining Area



Dimensions: 11'10" x 15'0"
Area: 178 sq. ft
Counted as living area: Yes

Heated: Yes
Finished: Yes
Enclosed: Yes
Contiguous: Yes
Permitted: Yes
Wet space: No
Addition: No
Conversion: No

5 Floor 1 - Hall



Dimensions: 3'2" x 5'1"
Area: 16 sq. ft
Counted as living area: Yes

Heated: Yes
Finished: Yes
Enclosed: Yes
Contiguous: Yes
Permitted: Yes
Wet space: No
Addition: No
Conversion: No

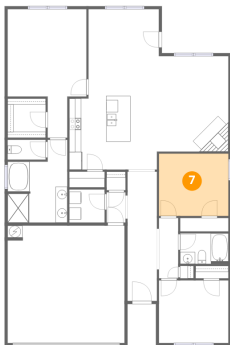
6 Floor 1 - Hall



Dimensions: 3'3" x 6'11"
Area: 23 sq. ft
Counted as living area: Yes

Heated: Yes
Finished: Yes
Enclosed: Yes
Contiguous: Yes
Permitted: Yes
Wet space: No
Addition: No
Conversion: No

7 Floor 1 - Bedroom



Dimensions: 11'8" x 10'6"
Area: 122 sq. ft
Counted as living area: Yes

Heated: Yes
Finished: Yes
Enclosed: Yes
Contiguous: Yes
Permitted: Yes
Wet space: No
Addition: No
Conversion: No

8 Floor 1 - Laundry



Dimensions: 5'11" x 5'7"
Area: 33 sq. ft
Counted as living area: Yes

Heated: Yes
Finished: Yes
Enclosed: Yes
Contiguous: Yes
Permitted: Yes
Wet space: No
Addition: No
Conversion: No

9 Floor 1 - Primary Bedroom



Dimensions: 13'3" x 14'8"
Area: 194 sq. ft
Counted as living area: Yes

Heated: Yes
Finished: Yes
Enclosed: Yes
Contiguous: Yes
Permitted: Yes
Wet space: No
Addition: No
Conversion: No

10 Floor 1 - Bedroom



Dimensions: 11'8" x 10'6"
Area: 123 sq. ft
Counted as living area: Yes

Heated: Yes
Finished: Yes
Enclosed: Yes
Contiguous: Yes
Permitted: Yes
Wet space: No
Addition: No
Conversion: No

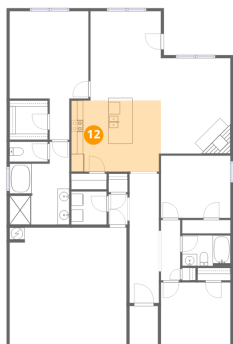
11 Floor 1 - W.I.C.



Dimensions: 6'5" x 6'7"
Area: 42 sq. ft
Counted as living area: Yes

Heated: Yes
Finished: Yes
Enclosed: Yes
Contiguous: Yes
Permitted: Yes
Wet space: No
Addition: No
Conversion: No

12 Floor 1 - Kitchen



Dimensions: 15'1" x 11'11"
Area: 179 sq. ft
Counted as living area: Yes

Heated: Yes
Finished: Yes
Enclosed: Yes
Contiguous: Yes
Permitted: Yes
Wet space: No
Addition: No
Conversion: No

13 Floor 1 - Bath



Dimensions: 8'1" x 5'1"
Area: 41 sq. ft
Counted as living area: Yes

Heated: Yes
Finished: Yes
Enclosed: Yes
Contiguous: Yes
Permitted: Yes
Wet space: Yes
Addition: No
Conversion: No

14 Floor 1 - Foyer



Dimensions: 4'11" x 21'9"
Area: 107 sq. ft
Counted as living area: Yes

Heated: Yes
Finished: Yes
Enclosed: Yes
Contiguous: Yes
Permitted: Yes
Wet space: No
Addition: No
Conversion: No

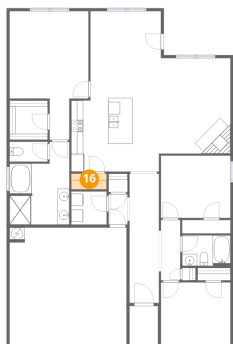
15 Floor 1 - Garage



Dimensions: 19'8" x 19'9"
Area: 387 sq. ft
Counted as living area: No

Heated: No
Finished: No
Enclosed: Yes
Contiguous: Yes
Permitted: Yes
Wet space: No
Addition: No
Conversion: No

16 Floor 1 - Pantry



Dimensions: 5'11" x 2'8"
Area: 16 sq. ft
Counted as living area: Yes

Heated: Yes
Finished: Yes
Enclosed: Yes
Contiguous: Yes
Permitted: Yes
Wet space: No
Addition: No
Conversion: No

17 Floor 1 - Primary Bath



Dimensions: 10'0" x 13'10"
Area: 139 sq. ft
Counted as living area: Yes

Heated: Yes
Finished: Yes
Enclosed: Yes
Contiguous: Yes
Permitted: Yes
Wet space: Yes
Addition: No
Conversion: No