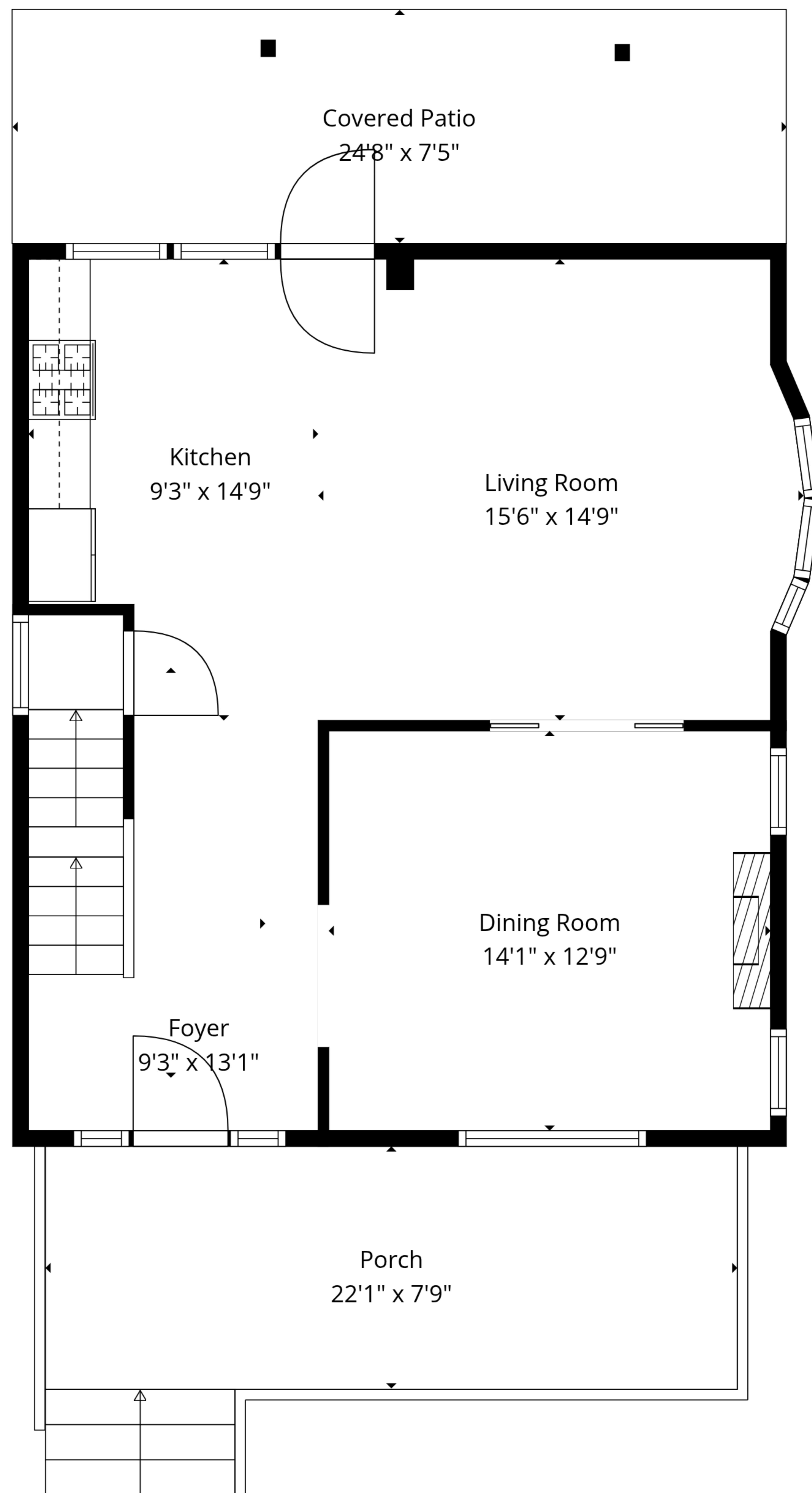


**TOTAL: 1685 sq. ft**

Basement: 0 sq. ft, 1st floor: 664 sq. ft, 2nd floor: 642 sq. ft, 3rd floor: 379 sq. ft  
EXCLUDED AREAS: STORAGE: 184 sq. ft, BASEMENT: 684 sq. ft, PORCH: 171 sq. ft,  
COVERED PATIO: 185 sq. ft, WALLS: 233 sq. ft

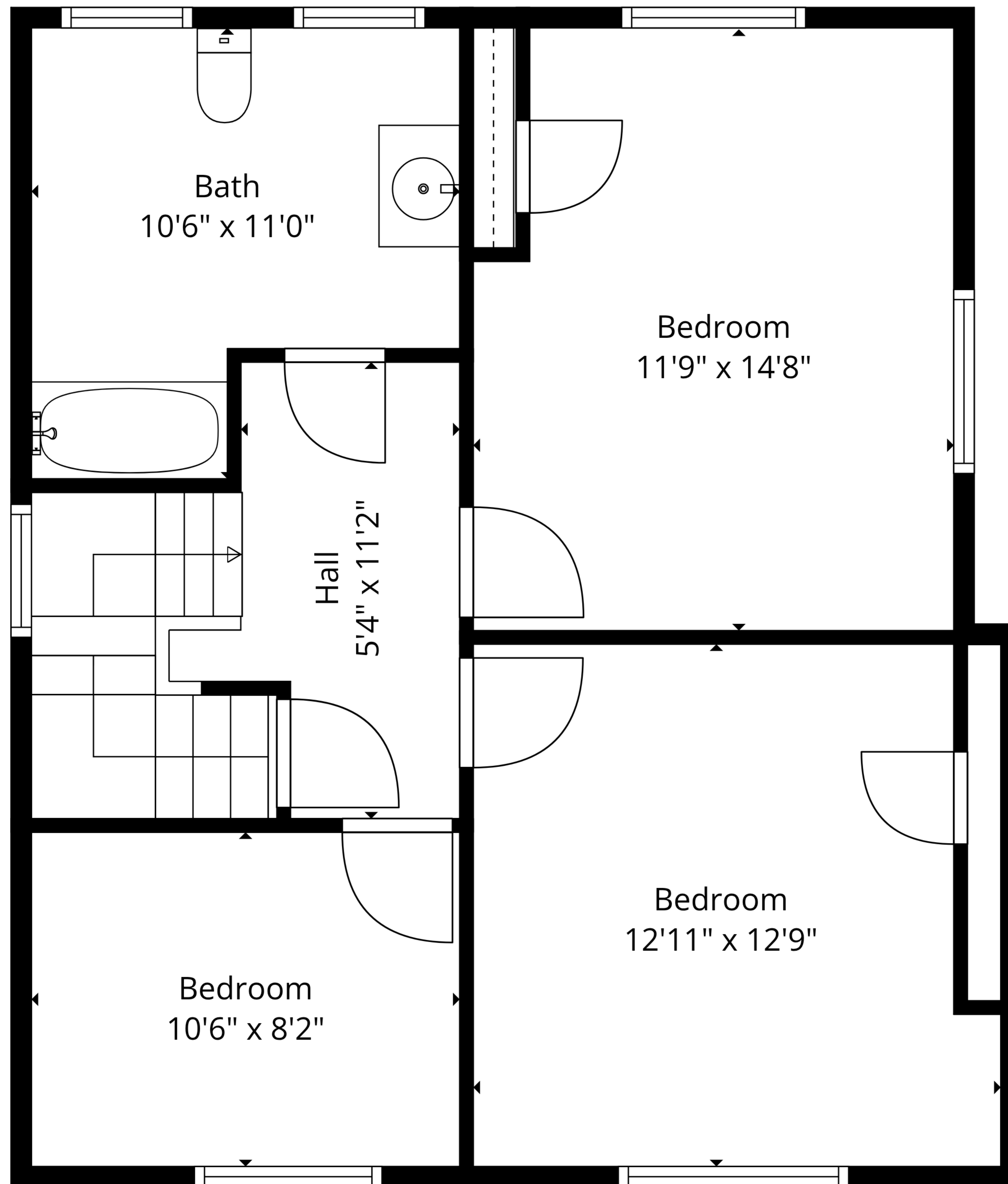




**TOTAL: 1685 sq. ft**

Basement: 0 sq. ft, 1st floor: 664 sq. ft, 2nd floor: 642 sq. ft, 3rd floor: 379 sq. ft  
 EXCLUDED AREAS: STORAGE: 184 sq. ft, BASEMENT: 684 sq. ft, PORCH: 171 sq. ft,  
 COVERED PATIO: 185 sq. ft, WALLS: 233 sq. ft

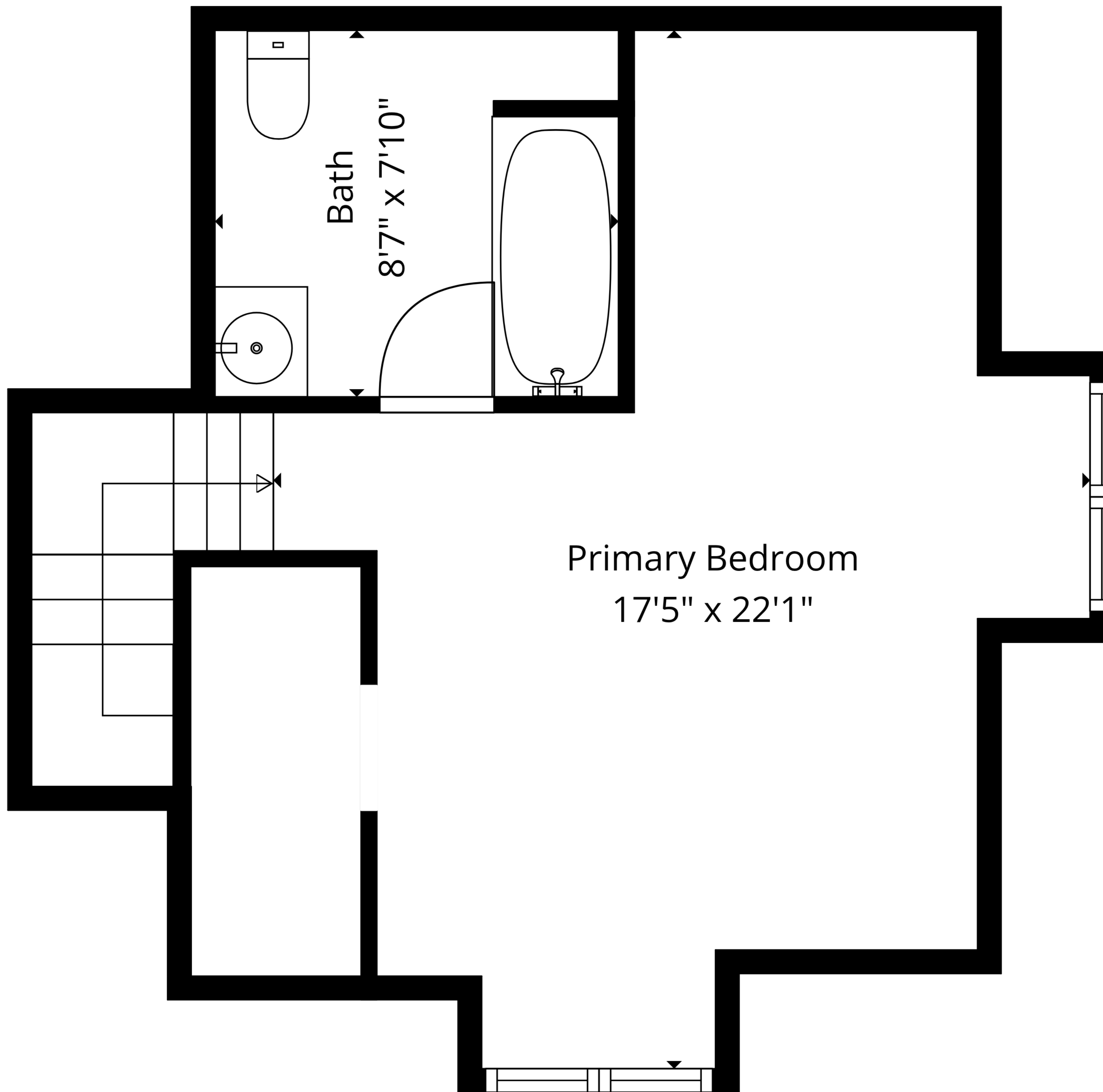




**TOTAL: 1685 sq. ft**

Basement: 0 sq. ft, 1st floor: 664 sq. ft, 2nd floor: 642 sq. ft, 3rd floor: 379 sq. ft  
 EXCLUDED AREAS: STORAGE: 184 sq. ft, BASEMENT: 684 sq. ft, PORCH: 171 sq. ft,  
 COVERED PATIO: 185 sq. ft, WALLS: 233 sq. ft

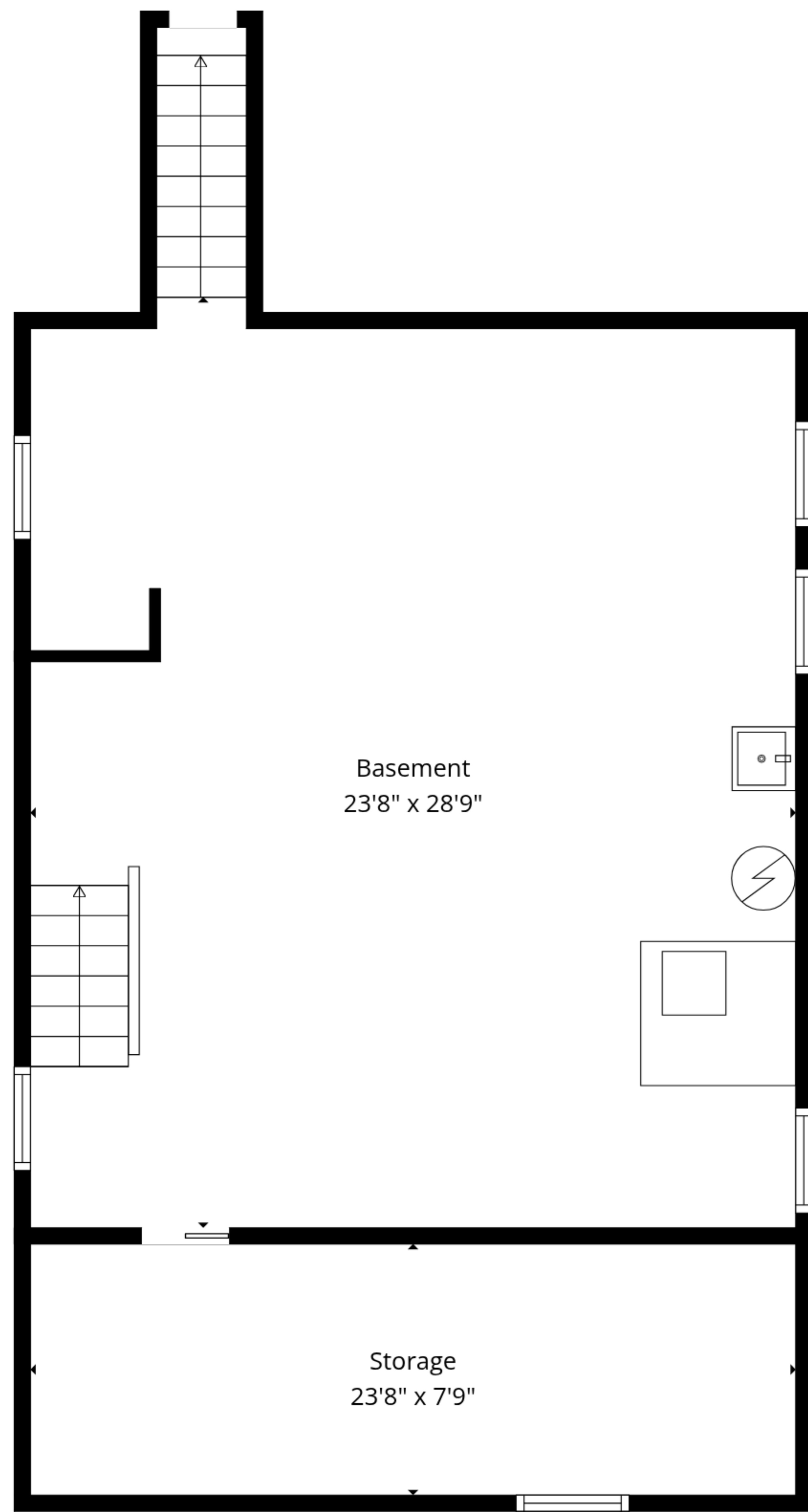




**TOTAL: 1685 sq. ft**

Basement: 0 sq. ft, 1st floor: 664 sq. ft, 2nd floor: 642 sq. ft, 3rd floor: 379 sq. ft  
EXCLUDED AREAS: STORAGE: 184 sq. ft, BASEMENT: 684 sq. ft, PORCH: 171 sq. ft,  
COVERED PATIO: 185 sq. ft, WALLS: 233 sq. ft

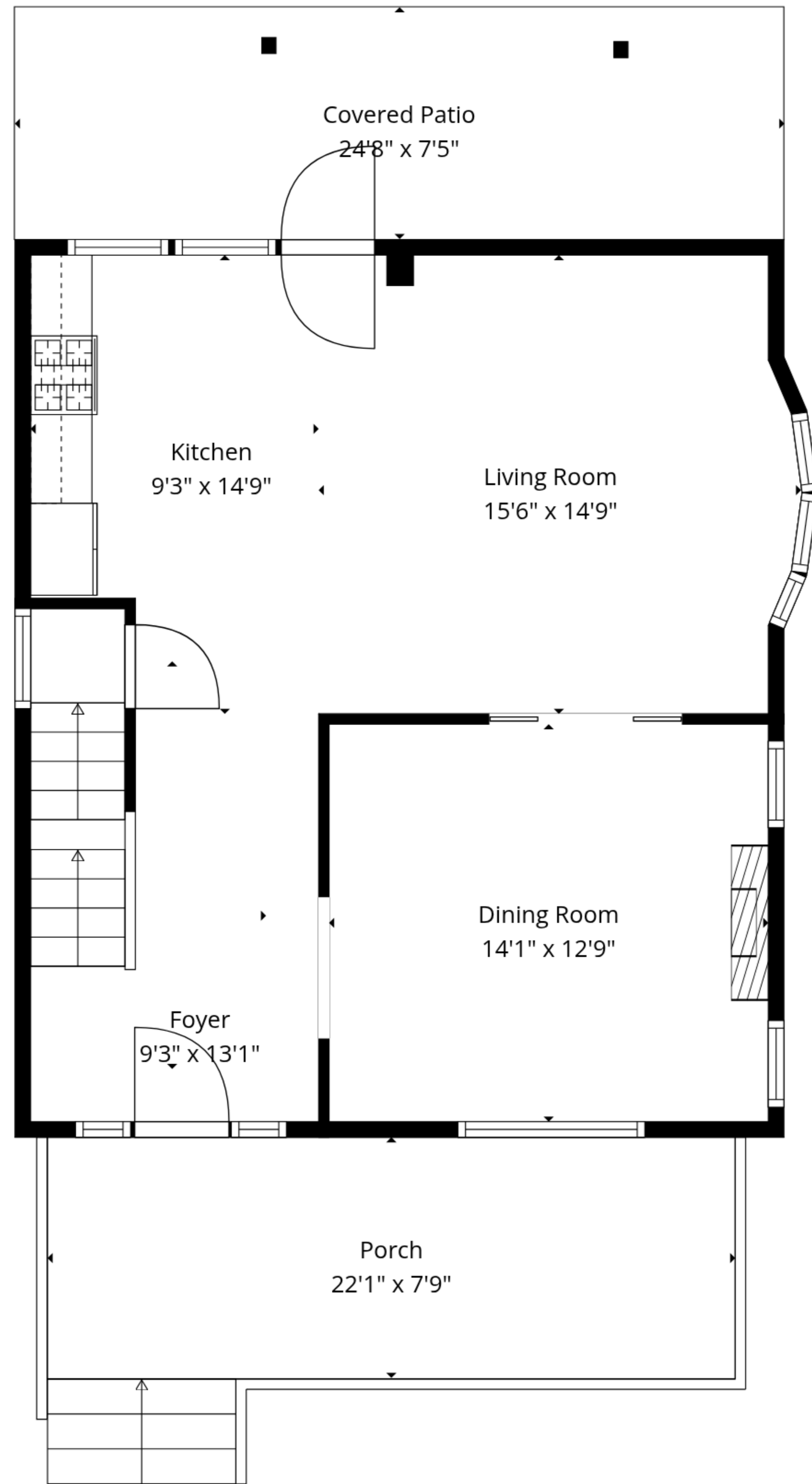




Basement  
23'8" x 28'9"

Storage  
23'8" x 7'9"

Basement



Covered Patio  
24'8" x 7'5"

Kitchen  
9'3" x 14'9"

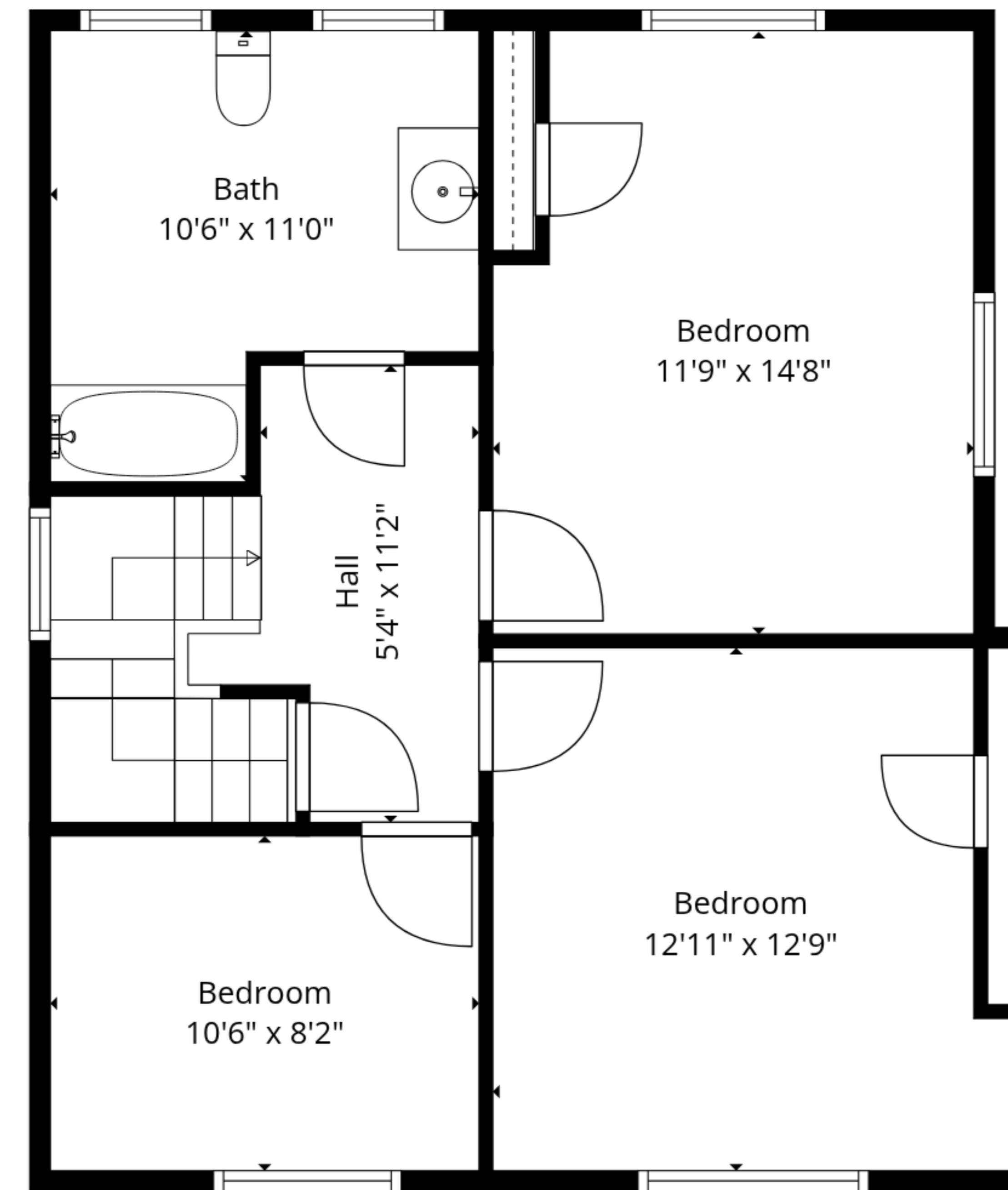
Living Room  
15'6" x 14'9"

Dining Room  
14'1" x 12'9"

Foyer  
9'3" x 13'1"

Porch  
22'1" x 7'9"

1st Floor



Bath  
10'6" x 11'0"

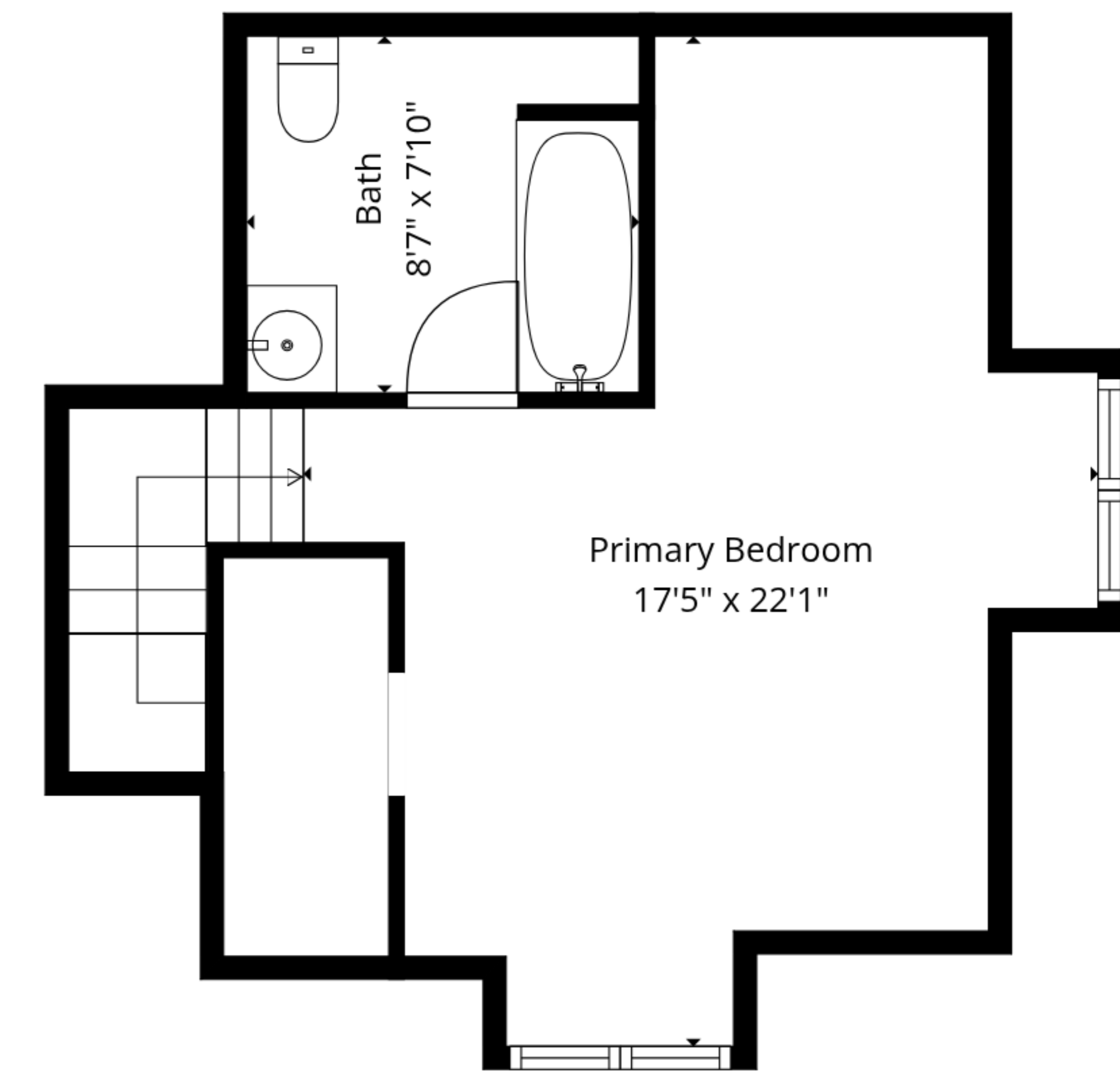
Bedroom  
11'9" x 14'8"

Bedroom  
10'6" x 8'2"

Bedroom  
12'11" x 12'9"

Hall  
5'4" x 11'2"

2nd Floor



Bath  
8'7" x 7'10"

Primary Bedroom  
17'5" x 22'1"

3rd Floor

**TOTAL: 1685 sq. ft**

Basement: 0 sq. ft, 1st floor: 664 sq. ft, 2nd floor: 642 sq. ft, 3rd floor: 379 sq. ft  
 EXCLUDED AREAS: STORAGE: 184 sq. ft, BASEMENT: 684 sq. ft, PORCH: 171 sq. ft,  
 COVERED PATIO: 185 sq. ft, WALLS: 233 sq. ft

