

Home report

1385 Wheeler Road, Lynchburg, Virginia 24504, United States



Total Area: 1343 sq. ft

Below Ground: 0 sq. ft, Floor 2: 1343 sq. ft

Excluded: Room 289 sq. ft, Basement 1022 sq. ft, Covered patio 106 sq. ft, Porch 99 sq. ft, Back deck 141 sq. ft, Walls: 159 sq. ft

Property summary

 **2** Floors

 **3** Bedrooms

 **2** Bathrooms

Home report

1385 Wheeler Road, Lynchburg, Virginia 24504, United States



Room dimensions

Floor 1 Below ground

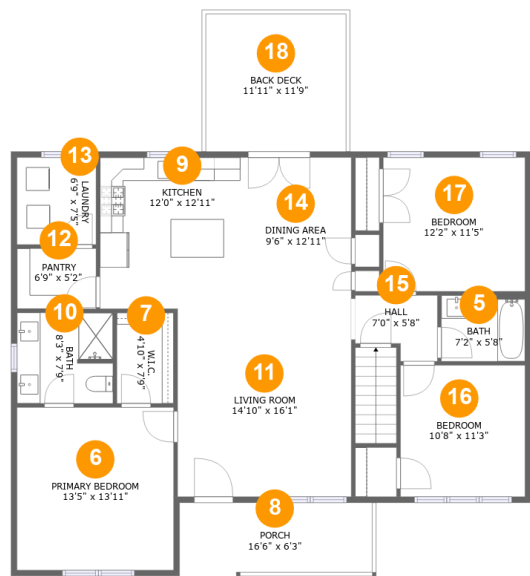
Total:0sqft

Excluded: 1417sqft

#		Max Dimensions	sqft	Included
1	Covered Patio	10'7" x 10'1"	106 sq. ft	No
2	Room	14'6" x 15'6"	194 sq. ft	No
3	Basement	42'7" x 29'0"	1021 sq. ft	No
4	Room	12'6" x 6'5"	80 sq. ft	No

Home report

1385 Wheeler Road, Lynchburg, Virginia 24504, United States



Room dimensions

Floor 2

Total:1343sqft

Excluded: 240sqft

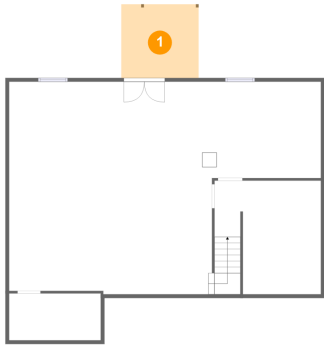
#		Max Dimensions	sqft	Included
5	Bath	7'2" x 5'8"	40 sq. ft	Yes
6	Primary Bedroom	13'5" x 13'11"	186 sq. ft	Yes
7	W.I.C.	4'10" x 7'9"	38 sq. ft	Yes
8	Porch	16'6" x 6'3"	99 sq. ft	No
9	Kitchen	12'0" x 12'11"	155 sq. ft	Yes
10	Bath	8'3" x 7'9"	63 sq. ft	Yes
11	Living Room	14'10" x 16'1"	238 sq. ft	Yes
12	Pantry	6'9" x 5'2"	35 sq. ft	Yes
13	Laundry	6'9" x 7'5"	50 sq. ft	Yes
14	Dining Area	9'6" x 12'11"	123 sq. ft	Yes
15	Hall	7'0" x 5'8"	34 sq. ft	Yes

Home report

1385 Wheeler Road, Lynchburg, Virginia 24504, United States

#		Max Dimensions	sqft	Included
16	Bedroom	10'8" x 11'3"	120 sq. ft	Yes
17	Bedroom	12'2" x 11'5"	139 sq. ft	Yes
18	Back Deck	11'11" x 11'9"	141 sq. ft	No

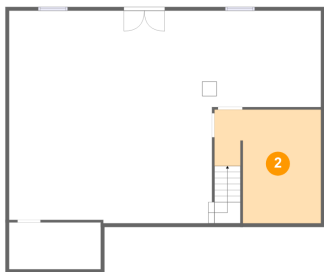
1 Floor 1 - Covered Patio



Max Dimensions: 10'7" x 10'1"
Calculated Area: 106 sq. ft
Included: No

Heated: No
Finished: Yes
Enclosed: No
Contiguous: Yes
Permitted: Yes
Wet space: No
Addition: No
Conversion: No

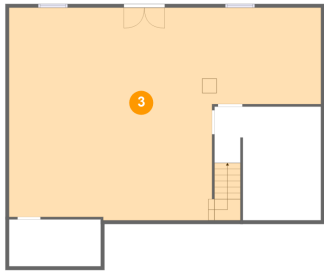
2 Floor 1 - Room



Max Dimensions: 14'6" x 15'6"
Calculated Area: 194 sq. ft
Included: No

Heated: Yes
Finished: No
Enclosed: Yes
Contiguous: Yes
Permitted: Yes
Wet space: No
Addition: No
Conversion: No

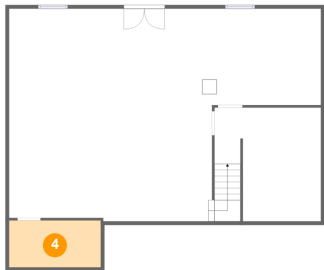
3 Floor 1 - Basement



Max Dimensions: 42'7" x 29'0"
Calculated Area: 1021 sq. ft
Included: No

Heated: Yes
Finished: No
Enclosed: Yes
Contiguous: Yes
Permitted: Yes
Wet space: No
Addition: No
Conversion: No

4 Floor 1 - Room



Max Dimensions: 12'6" x 6'5"
Calculated Area: 80 sq. ft
Included: No

Heated: Yes
Finished: No
Enclosed: Yes
Contiguous: Yes
Permitted: Yes
Wet space: No
Addition: No
Conversion: No

5 Floor 2 - Bath



Max Dimensions: 7'2" x 5'8"
Calculated Area: 40 sq. ft
Included: Yes

Heated: Yes
Finished: Yes
Enclosed: Yes
Contiguous: Yes
Permitted: Yes
Wet space: Yes
Addition: No
Conversion: No

6 Floor 2 - Primary Bedroom



Max Dimensions: 13'5" x 13'11"
Calculated Area: 186 sq. ft
Included: Yes

Heated: Yes
Finished: Yes
Enclosed: Yes
Contiguous: Yes
Permitted: Yes
Wet space: No
Addition: No
Conversion: No

7 Floor 2 - W.I.C.



Max Dimensions: 4'10" x 7'9"
Calculated Area: 38 sq. ft
Included: Yes

Heated: Yes
Finished: Yes
Enclosed: Yes
Contiguous: Yes
Permitted: Yes
Wet space: No
Addition: No
Conversion: No

8 Floor 2 - Porch



Max Dimensions: 16'6" x 6'3"
Calculated Area: 99 sq. ft
Included: No

Heated: No
Finished: Yes
Enclosed: No
Contiguous: Yes
Permitted: Yes
Wet space: No
Addition: No
Conversion: No

9 Floor 2 - Kitchen



Max Dimensions: 12'0" x 12'11"
Calculated Area: 155 sq. ft
Included: Yes

Heated: Yes
Finished: Yes
Enclosed: Yes
Contiguous: Yes
Permitted: Yes
Wet space: No
Addition: No
Conversion: No

10 Floor 2 - Bath



Max Dimensions: 8'3" x 7'9"
Calculated Area: 63 sq. ft
Included: Yes

Heated: Yes
Finished: Yes
Enclosed: Yes
Contiguous: Yes
Permitted: Yes
Wet space: Yes
Addition: No
Conversion: No

11 Floor 2 - Living Room



Max Dimensions: 14'10" x 16'1"
Calculated Area: 238 sq. ft
Included: Yes

Heated: Yes
Finished: Yes
Enclosed: Yes
Contiguous: Yes
Permitted: Yes
Wet space: No
Addition: No
Conversion: No

12 Floor 2 - Pantry



Max Dimensions: 6'9" x 5'2"
Calculated Area: 35 sq. ft
Included: Yes

Heated: Yes
Finished: Yes
Enclosed: Yes
Contiguous: Yes
Permitted: Yes
Wet space: No
Addition: No
Conversion: No

13 Floor 2 - Laundry



Max Dimensions: 6'9" x 7'5"
Calculated Area: 50 sq. ft
Included: Yes

Heated: Yes
Finished: Yes
Enclosed: Yes
Contiguous: Yes
Permitted: Yes
Wet space: No
Addition: No
Conversion: No

14 Floor 2 - Dining Area



Max Dimensions: 9'6" x 12'11"
Calculated Area: 123 sq. ft
Included: Yes

Heated: Yes
Finished: Yes
Enclosed: Yes
Contiguous: Yes
Permitted: Yes
Wet space: No
Addition: No
Conversion: No

15 Floor 2 - Hall



Max Dimensions: 7'0" x 5'8"
Calculated Area: 34 sq. ft
Included: Yes

Heated: Yes
Finished: Yes
Enclosed: Yes
Contiguous: Yes
Permitted: Yes
Wet space: No
Addition: No
Conversion: No

16 Floor 2 - Bedroom



Max Dimensions: 10'8" x 11'3"
Calculated Area: 120 sq. ft
Included: Yes

Heated: Yes
Finished: Yes
Enclosed: Yes
Contiguous: Yes
Permitted: Yes
Wet space: No
Addition: No
Conversion: No

17 Floor 2 - Bedroom



Max Dimensions: 12'2" x 11'5"
Calculated Area: 139 sq. ft
Included: Yes

Heated: Yes
Finished: Yes
Enclosed: Yes
Contiguous: Yes
Permitted: Yes
Wet space: No
Addition: No
Conversion: No

18 Floor 2 - Back Deck



Max Dimensions: 11'11" x 11'9"
Calculated Area: 141 sq. ft
Included: No

Heated: No
Finished: Yes
Enclosed: No
Contiguous: No
Permitted: Yes
Wet space: No
Addition: No
Conversion: No