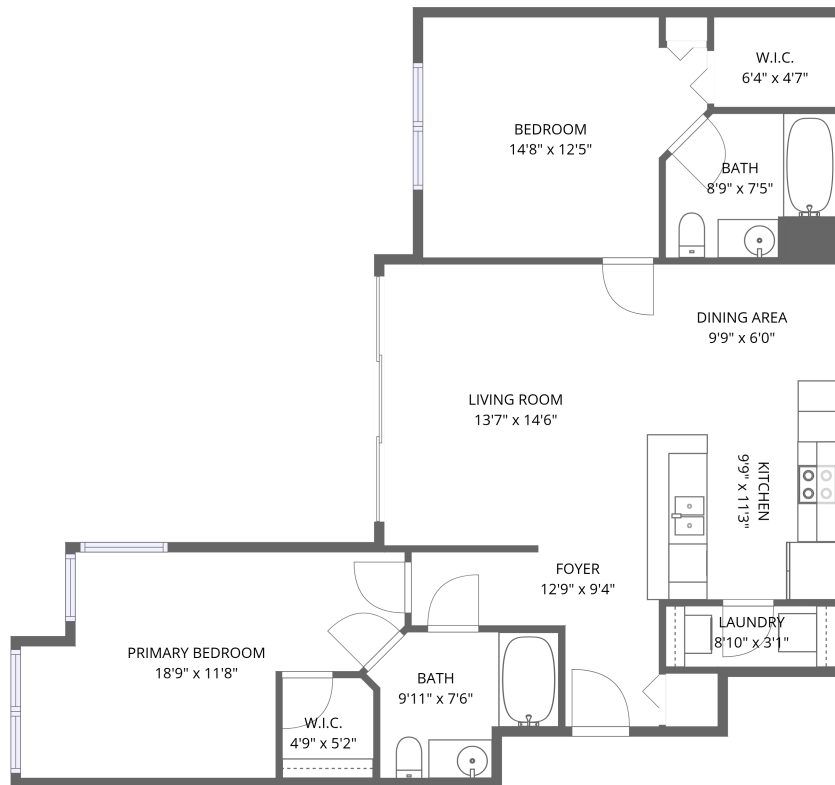


Home data report

260 Old Village Center Cir, 8204, St. Augustine, FL, US, 8204



1st floor


**Total Area: 1031 sq. ft**

1st Floor: 1031 sq. ft

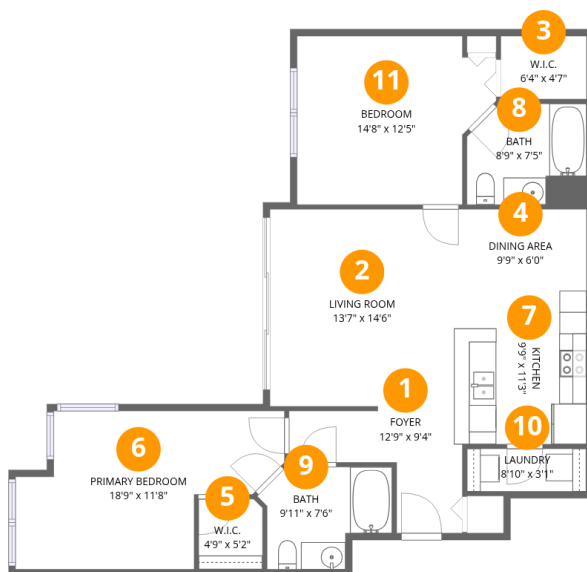
Excluded: Walls: 0 sq. ft

## Property summary

 **1** Floors

 **2** Bedrooms

 **2** Bathrooms



## Room dimensions

Floor 1

Total:1031sqft Excluded: 0sqft

| #  |                 | Dimensions    | sqft       | Counted as living area |
|----|-----------------|---------------|------------|------------------------|
| 1  | Foyer           | 12'9" x 9'4"  | 120 sq. ft | Yes                    |
| 2  | Living Room     | 13'7" x 14'6" | 197 sq. ft | Yes                    |
| 3  | W.I.C.          | 6'4" x 4'7"   | 29 sq. ft  | Yes                    |
| 4  | Dining Area     | 9'9" x 6'0"   | 59 sq. ft  | Yes                    |
| 5  | W.I.C.          | 4'9" x 5'2"   | 24 sq. ft  | Yes                    |
| 6  | Primary Bedroom | 18'9" x 11'8" | 219 sq. ft | Yes                    |
| 7  | Kitchen         | 9'9" x 11'3"  | 110 sq. ft | Yes                    |
| 8  | Bath            | 8'9" x 7'5"   | 65 sq. ft  | Yes                    |
| 9  | Bath            | 9'11" x 7'6"  | 75 sq. ft  | Yes                    |
| 10 | Laundry         | 8'10" x 3'1"  | 27 sq. ft  | Yes                    |
| 11 | Bedroom         | 14'8" x 12'5" | 183 sq. ft | Yes                    |

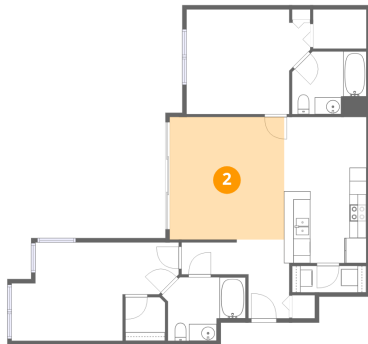
## 1 Floor 1 - Foyer



Dimensions: 12'9" x 9'4"  
Area: 120 sq. ft  
Counted as living area: Yes

Heated: Yes  
Finished: Yes  
Enclosed: Yes  
Contiguous: Yes  
Permitted: Yes  
Wet space: No  
Addition: No  
Conversion: No

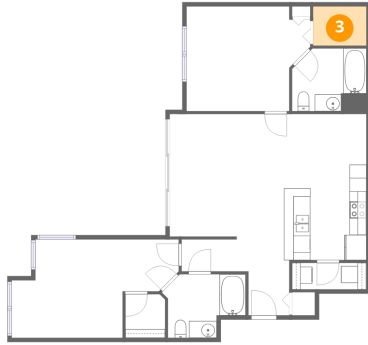
## 2 Floor 1 - Living Room



Dimensions: 13'7" x 14'6"  
Area: 197 sq. ft  
Counted as living area: Yes

Heated: Yes  
Finished: Yes  
Enclosed: Yes  
Contiguous: Yes  
Permitted: Yes  
Wet space: No  
Addition: No  
Conversion: No

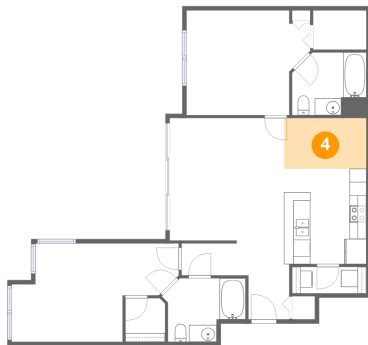
**3 Floor 1 - W.I.C.**



Dimensions: 6'4" x 4'7"  
Area: 29 sq. ft  
Counted as living area: Yes

Heated: Yes  
Finished: Yes  
Enclosed: Yes  
Contiguous: Yes  
Permitted: Yes  
Wet space: No  
Addition: No  
Conversion: No

**4 Floor 1 - Dining Area**



Dimensions: 9'9" x 6'0"  
Area: 59 sq. ft  
Counted as living area: Yes

Heated: Yes  
Finished: Yes  
Enclosed: Yes  
Contiguous: Yes  
Permitted: Yes  
Wet space: No  
Addition: No  
Conversion: No

**5 Floor 1 - W.I.C.**



Dimensions: 4'9" x 5'2"  
Area: 24 sq. ft  
Counted as living area: Yes

Heated: Yes  
Finished: Yes  
Enclosed: Yes  
Contiguous: Yes  
Permitted: Yes  
Wet space: No  
Addition: No  
Conversion: No

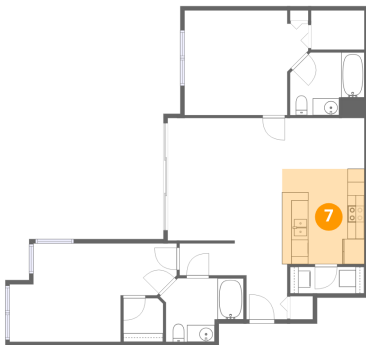
## 6 Floor 1 - Primary Bedroom



Dimensions: 18'9" x 11'8"  
Area: 219 sq. ft  
Counted as living area: Yes

Heated: Yes  
Finished: Yes  
Enclosed: Yes  
Contiguous: Yes  
Permitted: Yes  
Wet space: No  
Addition: No  
Conversion: No

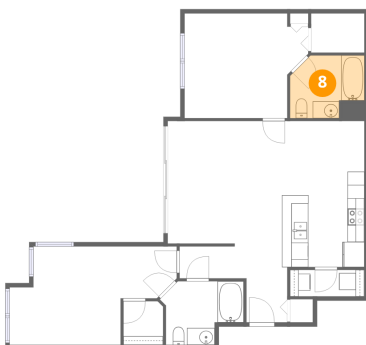
## 7 Floor 1 - Kitchen



Dimensions: 9'9" x 11'3"  
Area: 110 sq. ft  
Counted as living area: Yes

Heated: Yes  
Finished: Yes  
Enclosed: Yes  
Contiguous: Yes  
Permitted: Yes  
Wet space: No  
Addition: No  
Conversion: No

## 8 Floor 1 - Bath



Dimensions: 8'9" x 7'5"  
Area: 65 sq. ft  
Counted as living area: Yes

Heated: Yes  
Finished: Yes  
Enclosed: Yes  
Contiguous: Yes  
Permitted: Yes  
Wet space: Yes  
Addition: No  
Conversion: No

### 9 Floor 1 - Bath



Dimensions: 9'11" x 7'6"  
Area: 75 sq. ft  
Counted as living area: Yes

Heated: Yes  
Finished: Yes  
Enclosed: Yes  
Contiguous: Yes  
Permitted: Yes  
Wet space: Yes  
Addition: No  
Conversion: No

### 10 Floor 1 - Laundry



Dimensions: 8'10" x 3'1"  
Area: 27 sq. ft  
Counted as living area: Yes

Heated: Yes  
Finished: Yes  
Enclosed: Yes  
Contiguous: Yes  
Permitted: Yes  
Wet space: No  
Addition: No  
Conversion: No

### 11 Floor 1 - Bedroom



Dimensions: 14'8" x 12'5"  
Area: 183 sq. ft  
Counted as living area: Yes

Heated: Yes  
Finished: Yes  
Enclosed: Yes  
Contiguous: Yes  
Permitted: Yes  
Wet space: No  
Addition: No  
Conversion: No