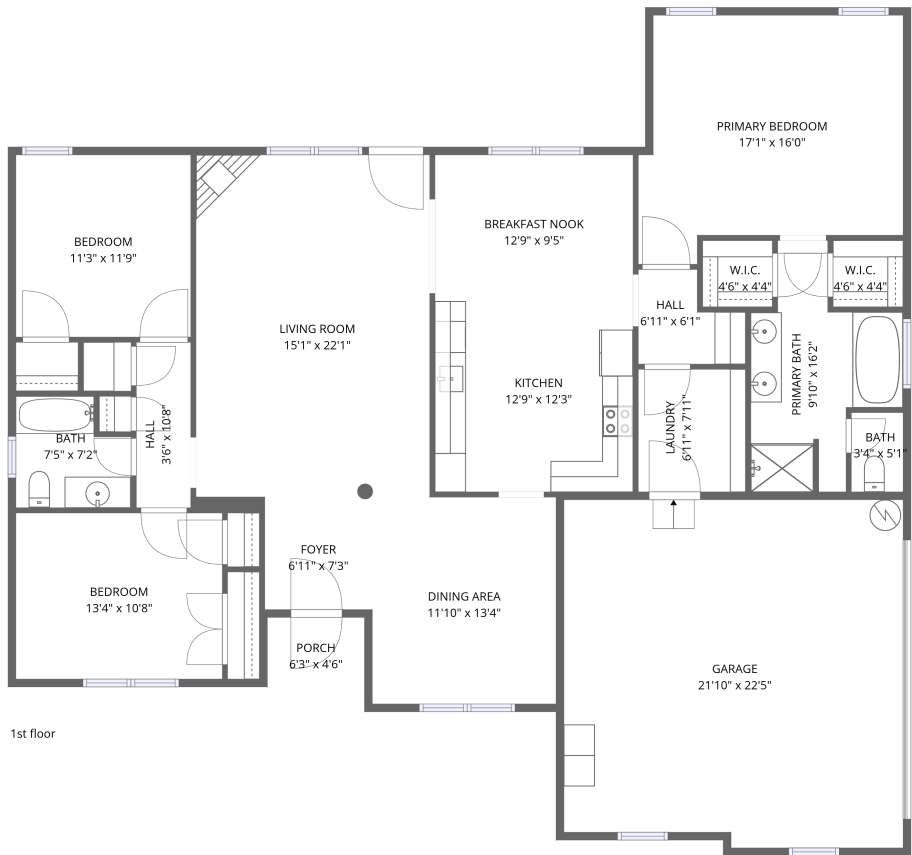


Home data report

27035 Newberry Lane, Athens, Limestone County, Alabama,  
United States, 35613




Total Area: 1924 sq. ft


1st Floor: 1924 sq. ft

Excluded: Garage 479 sq. ft, Porch 28 sq. ft

Property summary

 1 Floors

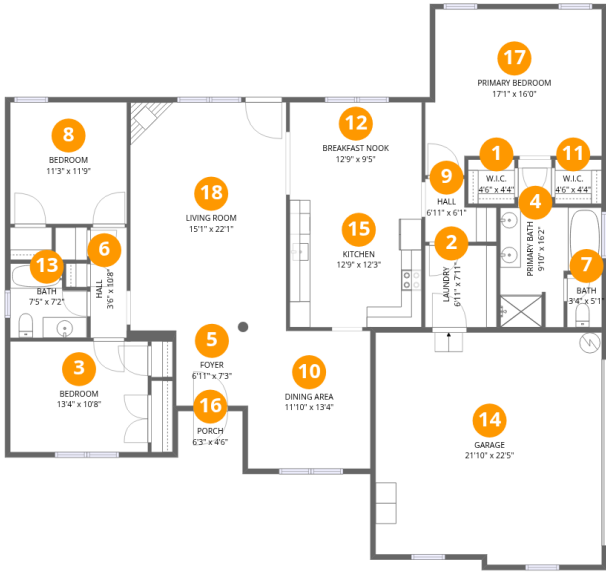
 3 Bedrooms

 2 Bathrooms

 1 Garages

Home data report

27035 Newberry Lane, Athens, Limestone County, Alabama,  
United States, 35613



Room dimensions

Floor 1 Total:1924sqft Excluded: 507sqft

#		Dimensions	sqft	Counted as living area
1	W.I.C.	4'6" x 4'4"	19 sq. ft	Yes
2	Laundry	6'11" x 7'11"	55 sq. ft	Yes
3	Bedroom	13'4" x 10'8"	142 sq. ft	Yes
4	Primary Bath	9'10" x 16'2"	107 sq. ft	Yes
5	Foyer	6'11" x 7'3"	50 sq. ft	Yes
6	Hall	3'6" x 10'8"	37 sq. ft	Yes
7	Bath	3'4" x 5'1"	17 sq. ft	Yes
8	Bedroom	11'3" x 11'9"	132 sq. ft	Yes
9	Hall	6'11" x 6'1"	34 sq. ft	Yes
10	Dining Area	11'10" x 13'4"	158 sq. ft	Yes
11	W.I.C.	4'6" x 4'4"	19 sq. ft	Yes

## Home data report

**27035 Newberry Lane, Athens, Limestone County, Alabama,  
United States, 35613**

#		Dimensions	sqft	Counted as living area
12	Breakfast Nook	12'9" x 9'5"	121 sq. ft	Yes
13	Bath	7'5" x 7'2"	47 sq. ft	Yes
14	Garage	21'10" x 22'5"	479 sq. ft	No
15	Kitchen	12'9" x 12'3"	156 sq. ft	Yes
16	Porch	6'3" x 4'6"	28 sq. ft	No
17	Primary Bedroom	17'1" x 16'0"	240 sq. ft	Yes
18	Living Room	15'1" x 22'1"	332 sq. ft	Yes

27035 Newberry Lane, Athens, Limestone County, Alabama,  
United States, 35613

1 Floor 1 - W.I.C.



Dimensions: 4'6" x 4'4"  
Area: 19 sq. ft  
Counted as living area: Yes

Heated: Yes  
Finished: Yes  
Enclosed: Yes  
Contiguous: Yes  
Permitted: Yes  
Wet space: No  
Addition: No  
Conversion: No

2 Floor 1 - Laundry



Dimensions: 6'11" x 7'11"  
Area: 55 sq. ft  
Counted as living area: Yes

Heated: Yes  
Finished: Yes  
Enclosed: Yes  
Contiguous: Yes  
Permitted: Yes  
Wet space: No  
Addition: No  
Conversion: No

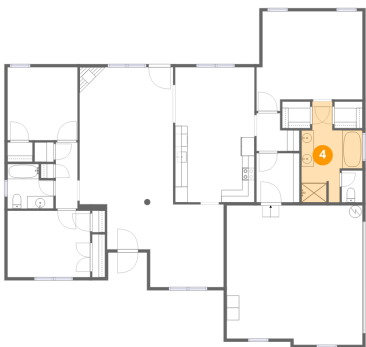
3 Floor 1 - Bedroom



Dimensions: 13'4" x 10'8"  
Area: 142 sq. ft  
Counted as living area: Yes

Heated: Yes  
Finished: Yes  
Enclosed: Yes  
Contiguous: Yes  
Permitted: Yes  
Wet space: No  
Addition: No  
Conversion: No

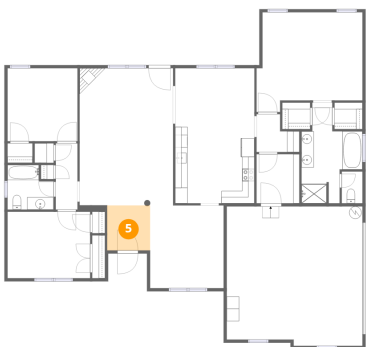
4 Floor 1 - Primary Bath



Dimensions: 9'10" x 16'2"  
Area: 107 sq. ft  
Counted as living area: Yes

Heated: Yes  
Finished: Yes  
Enclosed: Yes  
Contiguous: Yes  
Permitted: Yes  
Wet space: Yes  
Addition: No  
Conversion: No

5 Floor 1 - Foyer



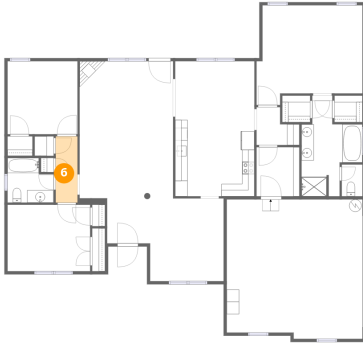
Dimensions: 6'11" x 7'3"  
Area: 50 sq. ft  
Counted as living area: Yes

Heated: Yes  
Finished: Yes  
Enclosed: Yes  
Contiguous: Yes  
Permitted: Yes  
Wet space: No  
Addition: No  
Conversion: No

## Home data report

27035 Newberry Lane, Athens, Limestone County, Alabama,  
United States, 35613

### 6 Floor 1 - Hall



Dimensions: 3'6" x 10'8"  
Area: 37 sq. ft  
Counted as living area: Yes

Heated: Yes  
Finished: Yes  
Enclosed: Yes  
Contiguous: Yes  
Permitted: Yes  
Wet space: No  
Addition: No  
Conversion: No

### 7 Floor 1 - Bath



Dimensions: 3'4" x 5'1"  
Area: 17 sq. ft  
Counted as living area: Yes

Heated: Yes  
Finished: Yes  
Enclosed: Yes  
Contiguous: Yes  
Permitted: Yes  
Wet space: Yes  
Addition: No  
Conversion: No

### 8 Floor 1 - Bedroom



Dimensions: 11'3" x 11'9"  
Area: 132 sq. ft  
Counted as living area: Yes

Heated: Yes  
Finished: Yes  
Enclosed: Yes  
Contiguous: Yes  
Permitted: Yes  
Wet space: No  
Addition: No  
Conversion: No

## Home data report

27035 Newberry Lane, Athens, Limestone County, Alabama,  
United States, 35613

### 9 Floor 1 - Hall



Dimensions: 6'11" x 6'1"  
Area: 34 sq. ft  
Counted as living area: Yes

Heated: Yes  
Finished: Yes  
Enclosed: Yes  
Contiguous: Yes  
Permitted: Yes  
Wet space: No  
Addition: No  
Conversion: No

### 10 Floor 1 - Dining Area



Dimensions: 11'10" x 13'4"  
Area: 158 sq. ft  
Counted as living area: Yes

Heated: Yes  
Finished: Yes  
Enclosed: Yes  
Contiguous: Yes  
Permitted: Yes  
Wet space: No  
Addition: No  
Conversion: No

### 11 Floor 1 - W.I.C.



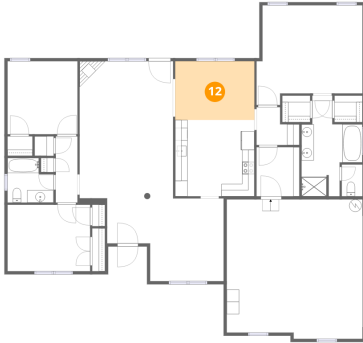
Dimensions: 4'6" x 4'4"  
Area: 19 sq. ft  
Counted as living area: Yes

Heated: Yes  
Finished: Yes  
Enclosed: Yes  
Contiguous: Yes  
Permitted: Yes  
Wet space: No  
Addition: No  
Conversion: No

## Home data report

27035 Newberry Lane, Athens, Limestone County, Alabama,  
United States, 35613

### 12 Floor 1 - Breakfast Nook



Dimensions: 12'9" x 9'5"  
Area: 121 sq. ft  
Counted as living area: Yes

Heated: Yes  
Finished: Yes  
Enclosed: Yes  
Contiguous: Yes  
Permitted: Yes  
Wet space: No  
Addition: No  
Conversion: No

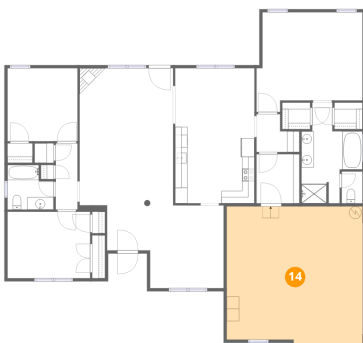
### 13 Floor 1 - Bath



Dimensions: 7'5" x 7'2"  
Area: 47 sq. ft  
Counted as living area: Yes

Heated: Yes  
Finished: Yes  
Enclosed: Yes  
Contiguous: Yes  
Permitted: Yes  
Wet space: Yes  
Addition: No  
Conversion: No

### 14 Floor 1 - Garage



Dimensions: 21'10" x 22'5"  
Area: 479 sq. ft  
Counted as living area: No

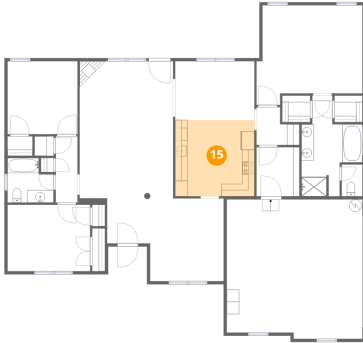
Heated: No  
Finished: No  
Enclosed: Yes  
Contiguous: Yes  
Permitted: Yes  
Wet space: No  
Addition: No  
Conversion: No



## Home data report

27035 Newberry Lane, Athens, Limestone County, Alabama,  
United States, 35613

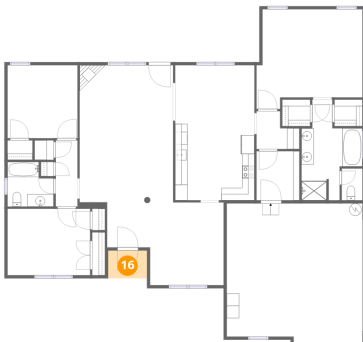
### 15 Floor 1 - Kitchen



Dimensions: 12'9" x 12'3"  
Area: 156 sq. ft  
Counted as living area: Yes

Heated: Yes  
Finished: Yes  
Enclosed: Yes  
Contiguous: Yes  
Permitted: Yes  
Wet space: No  
Addition: No  
Conversion: No

### 16 Floor 1 - Porch



Dimensions: 6'3" x 4'6"  
Area: 28 sq. ft  
Counted as living area: No

Heated: No  
Finished: No  
Enclosed: No  
Contiguous: Yes  
Permitted: Yes  
Wet space: No  
Addition: No  
Conversion: No

### 17 Floor 1 - Primary Bedroom

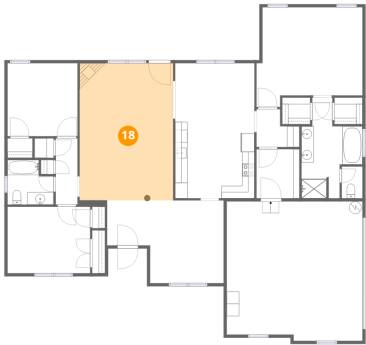


Dimensions: 17'1" x 16'0"  
Area: 240 sq. ft  
Counted as living area: Yes

Heated: Yes  
Finished: Yes  
Enclosed: Yes  
Contiguous: Yes  
Permitted: Yes  
Wet space: No  
Addition: No  
Conversion: No

27035 Newberry Lane, Athens, Limestone County, Alabama,  
United States, 35613

**18** Floor 1 - Living Room



Dimensions: 15'1" x 22'1"  
Area: 332 sq. ft  
Counted as living area: Yes

Heated: Yes  
Finished: Yes  
Enclosed: Yes  
Contiguous: Yes  
Permitted: Yes  
Wet space: No  
Addition: No  
Conversion: No