

Home data report

72 North Ridge Road, Bradford, Merrimack County, New Hampshire, United States, 03221



Total Area: 2517 sq. ft

Basement: 280 sq. ft, 1st Floor: 1603 sq. ft, 2nd Floor: 634 sq. ft

Excluded: Basement 1358 sq. ft, Storage 57 sq. ft, Garage 551 sq. ft, Screened porch 181 sq. ft, Balcony 88 sq. ft, Open to below 636 sq. ft, Walls: 344 sq. ft

Property summary



3 Floors



3 Bedrooms



3 Bathrooms

Home data report

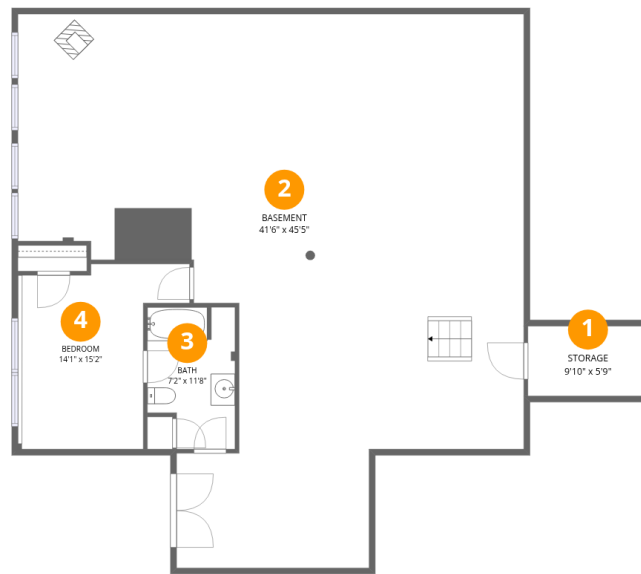
72 North Ridge Road, Bradford, Merrimack County, New Hampshire, United States, 03221

 **1**
Half baths

 **1**
Garages

Home data report

72 North Ridge Road, Bradford, Merrimack County, New Hampshire, United States, 03221



Room dimensions

Floor 1 Below grade

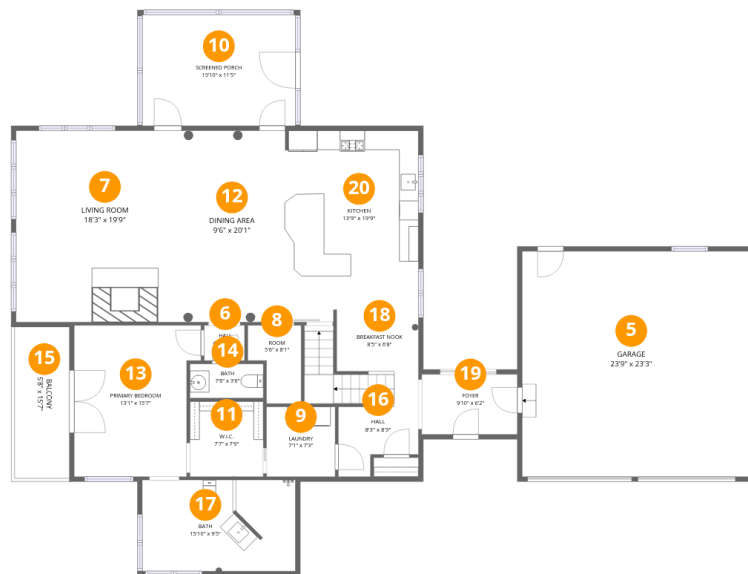
Total:280sqft

Excluded: 1415sqft

#		Dimensions	sqft	Counted as living area
1	Storage	9'10" x 5'9"	57 sq. ft	No
2	Basement	41'6" x 45'5"	1885 sq. ft	No
3	Bath	7'2" x 11'8"	84 sq. ft	Yes
4	Bedroom	14'1" x 15'2"	214 sq. ft	Yes

Home data report

72 North Ridge Road, Bradford, Merrimack County, New Hampshire, United States, 03221



Room dimensions

Floor 2

Total:1603sqft Excluded: 820sqft

#		Dimensions	sqft	Counted as living area
5	Garage	23'9" x 23'3"	551 sq. ft	No
6	Hall	4'2" x 3'8"	15 sq. ft	Yes
7	Living Room	18'3" x 19'9"	360 sq. ft	Yes
8	Room	5'6" x 8'1"	44 sq. ft	Yes
9	Laundry	7'1" x 7'3"	51 sq. ft	Yes
10	Screened Porch	15'10" x 11'5"	181 sq. ft	No
11	W.I.C.	7'7" x 7'9"	59 sq. ft	Yes
12	Dining Area	9'6" x 20'1"	191 sq. ft	Yes
13	Primary Bedroom	13'1" x 15'7"	204 sq. ft	Yes
14	Bath	7'6" x 3'6"	27 sq. ft	Yes
15	Balcony	5'8" x 15'7"	88 sq. ft	No

Scan captured on Tue, 24 Mar 2026 01:39:05 GMT

FLOOR PLAN CREATED BY CUBICASA APP. MEASUREMENTS DEEMED HIGHLY RELIABLE BUT NOT GUARANTEED.

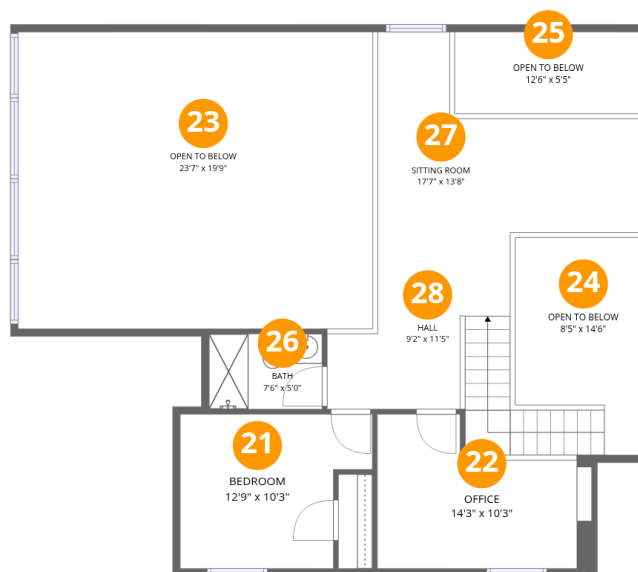
Home data report

72 North Ridge Road, Bradford, Merrimack County, New Hampshire, United States, 03221

#		Dimensions	sqft	Counted as living area
16	Hall	8'3" x 8'3"	68 sq. ft	Yes
17	Bath	15'10" x 9'5"	149 sq. ft	Yes
18	Breakfast Nook	8'5" x 6'8"	56 sq. ft	Yes
19	Foyer	9'10" x 6'2"	61 sq. ft	Yes
20	Kitchen	13'9" x 19'9"	271 sq. ft	Yes

Home data report

72 North Ridge Road, Bradford, Merrimack County, New Hampshire, United States, 03221



Room dimensions

Floor 3

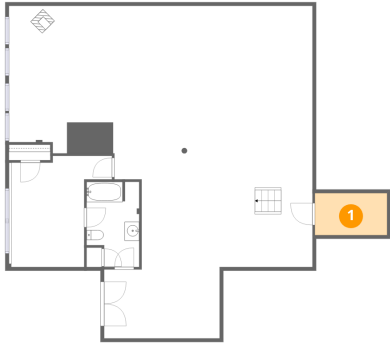
Total:634sqft

Excluded: 636sqft

#		Dimensions	sqft	Counted as living area
21	Bedroom	12'9" x 10'3"	131 sq. ft	Yes
22	Office	14'3" x 10'3"	147 sq. ft	Yes
23	Open To Below	23'7" x 19'9"	465 sq. ft	No
24	Open To Below	8'5" x 14'6"	122 sq. ft	No
25	Open To Below	12'6" x 5'5"	68 sq. ft	No
26	Bath	7'6" x 5'0"	38 sq. ft	Yes
27	Sitting Room	17'7" x 13'8"	240 sq. ft	Yes
28	Hall	9'2" x 11'5"	105 sq. ft	Yes

72 North Ridge Road, Bradford, Merrimack County, New Hampshire, United States, 03221

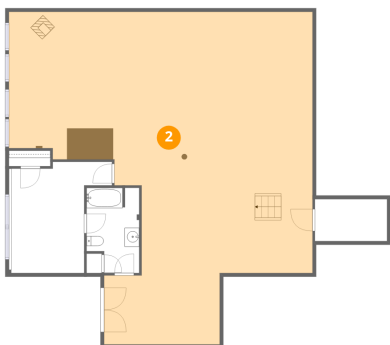
1 Floor 1 - Storage



Dimensions: 9'10" x 5'9"
Area: 57 sq. ft
Counted as living area: No

Heated: No
Finished: No
Enclosed: No
Contiguous: Yes
Permitted: Yes
Wet space: No
Addition: No
Conversion: No

2 Floor 1 - Basement

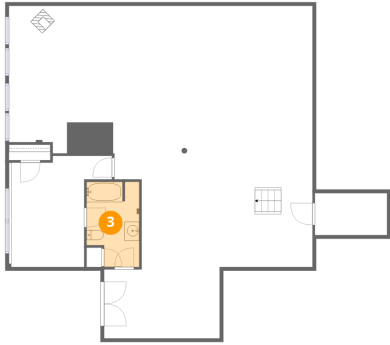


Dimensions: 41'6" x 45'5"
Area: 1885 sq. ft
Counted as living area: No

Heated: Yes
Finished: No
Enclosed: Yes
Contiguous: Yes
Permitted: Yes
Wet space: No
Addition: No
Conversion: No

72 North Ridge Road, Bradford, Merrimack County, New Hampshire, United States, 03221

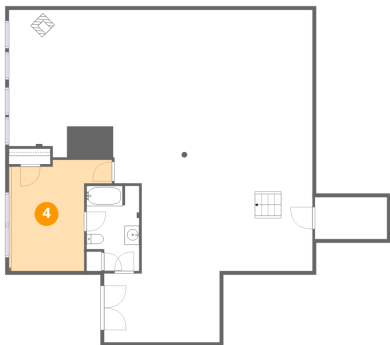
3 Floor 1 - Bath



Dimensions: 7'2" x 11'8"
Area: 84 sq. ft
Counted as living area: Yes

Heated: Yes
Finished: Yes
Enclosed: Yes
Contiguous: Yes
Permitted: Yes
Wet space: Yes
Addition: No
Conversion: No

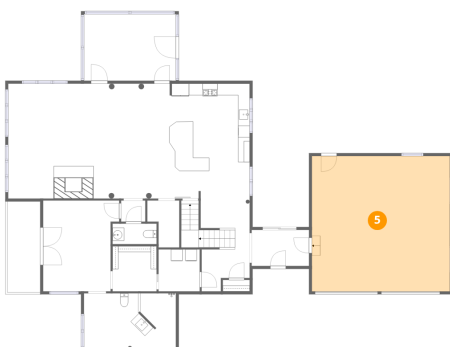
4 Floor 1 - Bedroom



Dimensions: 14'1" x 15'2"
Area: 214 sq. ft
Counted as living area: Yes

Heated: Yes
Finished: Yes
Enclosed: Yes
Contiguous: Yes
Permitted: Yes
Wet space: No
Addition: No
Conversion: No

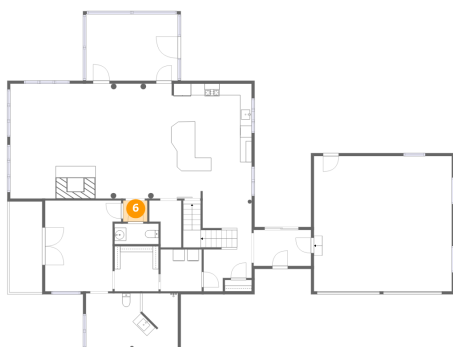
5 Floor 2 - Garage



Dimensions: 23'9" x 23'3"
Area: 551 sq. ft
Counted as living area: No

Heated: No
Finished: No
Enclosed: Yes
Contiguous: Yes
Permitted: Yes
Wet space: No
Addition: No
Conversion: No

6 Floor 2 - Hall



Dimensions: 4'2" x 3'8"
Area: 15 sq. ft
Counted as living area: Yes

Heated: Yes
Finished: Yes
Enclosed: Yes
Contiguous: Yes
Permitted: Yes
Wet space: No
Addition: No
Conversion: No

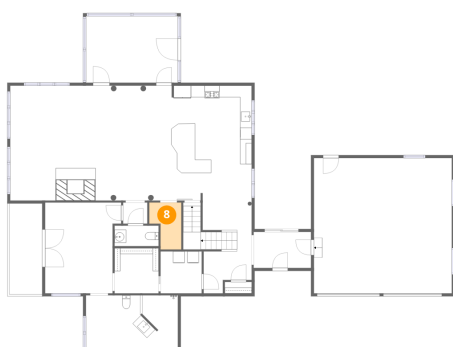
7 Floor 2 - Living Room



Dimensions: 18'3" x 19'9"
Area: 360 sq. ft
Counted as living area: Yes

Heated: Yes
Finished: Yes
Enclosed: Yes
Contiguous: Yes
Permitted: Yes
Wet space: No
Addition: No
Conversion: No

8 Floor 2 - Room

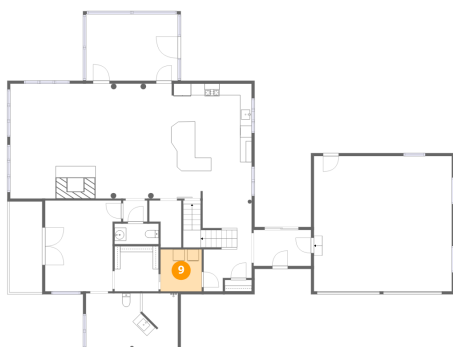


Dimensions: 5'6" x 8'1"
Area: 44 sq. ft
Counted as living area: Yes

Heated: Yes
Finished: Yes
Enclosed: Yes
Contiguous: Yes
Permitted: Yes
Wet space: No
Addition: No
Conversion: No

72 North Ridge Road, Bradford, Merrimack County, New Hampshire, United States, 03221

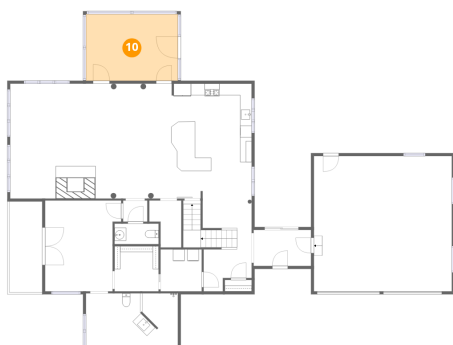
9 Floor 2 - Laundry



Dimensions: 7'1" x 7'3"
Area: 51 sq. ft
Counted as living area: Yes

Heated: Yes
Finished: Yes
Enclosed: Yes
Contiguous: Yes
Permitted: Yes
Wet space: No
Addition: No
Conversion: No

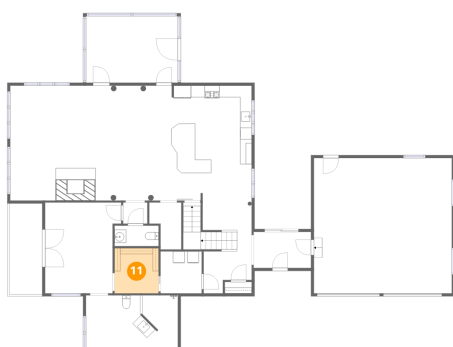
10 Floor 2 - Screened Porch



Dimensions: 15'10" x 11'5"
Area: 181 sq. ft
Counted as living area: No

Heated: No
Finished: No
Enclosed: No
Contiguous: Yes
Permitted: Yes
Wet space: No
Addition: No
Conversion: No

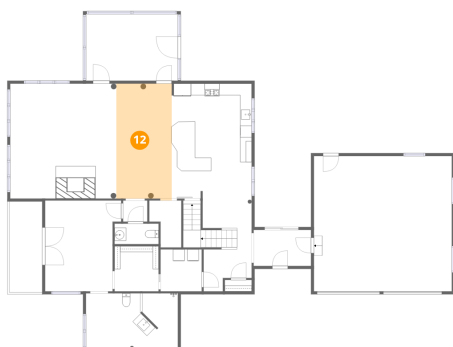
11 Floor 2 - W.I.C.



Dimensions: 7'7" x 7'9"
Area: 59 sq. ft
Counted as living area: Yes

Heated: Yes
Finished: Yes
Enclosed: Yes
Contiguous: Yes
Permitted: Yes
Wet space: No
Addition: No
Conversion: No

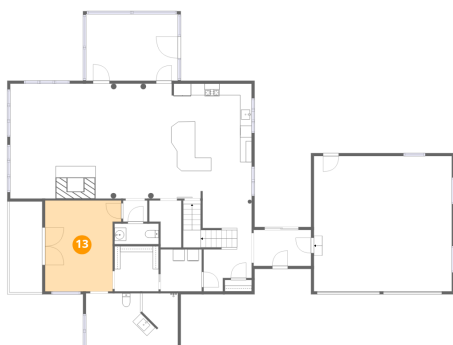
12 Floor 2 - Dining Area



Dimensions: 9'6" x 20'1"
Area: 191 sq. ft
Counted as living area: Yes

Heated: Yes
Finished: Yes
Enclosed: Yes
Contiguous: Yes
Permitted: Yes
Wet space: No
Addition: No
Conversion: No

13 Floor 2 - Primary Bedroom



Dimensions: 13'1" x 15'7"
Area: 204 sq. ft
Counted as living area: Yes

Heated: Yes
Finished: Yes
Enclosed: Yes
Contiguous: Yes
Permitted: Yes
Wet space: No
Addition: No
Conversion: No

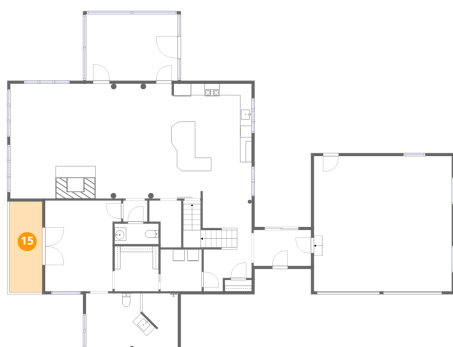
14 Floor 2 - Bath



Dimensions: 7'6" x 3'6"
Area: 27 sq. ft
Counted as living area: Yes

Heated: Yes
Finished: Yes
Enclosed: Yes
Contiguous: Yes
Permitted: Yes
Wet space: Yes
Addition: No
Conversion: No

15 Floor 2 - Balcony



Dimensions: 5'8" x 15'7"
Area: 88 sq. ft
Counted as living area: No

Heated: No
Finished: No
Enclosed: No
Contiguous: Yes
Permitted: Yes
Wet space: No
Addition: No
Conversion: No

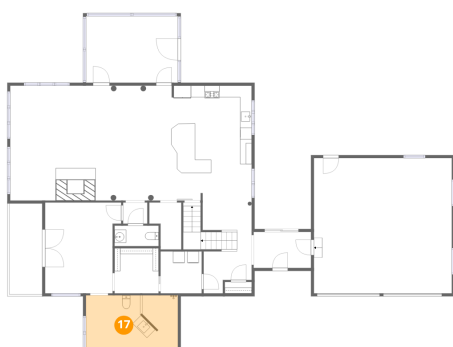
16 Floor 2 - Hall



Dimensions: 8'3" x 8'3"
Area: 68 sq. ft
Counted as living area: Yes

Heated: Yes
Finished: Yes
Enclosed: Yes
Contiguous: Yes
Permitted: Yes
Wet space: No
Addition: No
Conversion: No

17 Floor 2 - Bath



Dimensions: 15'10" x 9'5"
Area: 149 sq. ft
Counted as living area: Yes

Heated: Yes
Finished: Yes
Enclosed: Yes
Contiguous: Yes
Permitted: Yes
Wet space: Yes
Addition: No
Conversion: No

18 Floor 2 - Breakfast Nook



Dimensions: 8'5" x 6'8"
Area: 56 sq. ft
Counted as living area: Yes

Heated: Yes
Finished: Yes
Enclosed: Yes
Contiguous: Yes
Permitted: Yes
Wet space: No
Addition: No
Conversion: No

19 Floor 2 - Foyer



Dimensions: 9'10" x 6'2"
Area: 61 sq. ft
Counted as living area: Yes

Heated: Yes
Finished: Yes
Enclosed: Yes
Contiguous: Yes
Permitted: Yes
Wet space: No
Addition: No
Conversion: No

20 Floor 2 - Kitchen

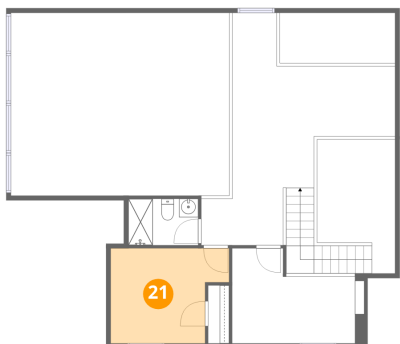


Dimensions: 13'9" x 19'9"
Area: 271 sq. ft
Counted as living area: Yes

Heated: Yes
Finished: Yes
Enclosed: Yes
Contiguous: Yes
Permitted: Yes
Wet space: No
Addition: No
Conversion: No

72 North Ridge Road, Bradford, Merrimack County, New Hampshire, United States, 03221

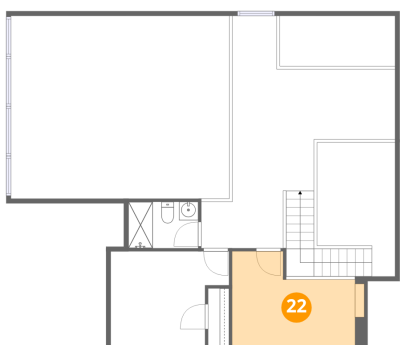
21 Floor 3 - Bedroom



Dimensions: 12'9" x 10'3"
Area: 131 sq. ft
Counted as living area: Yes

Heated: Yes
Finished: Yes
Enclosed: Yes
Contiguous: Yes
Permitted: Yes
Wet space: No
Addition: No
Conversion: No

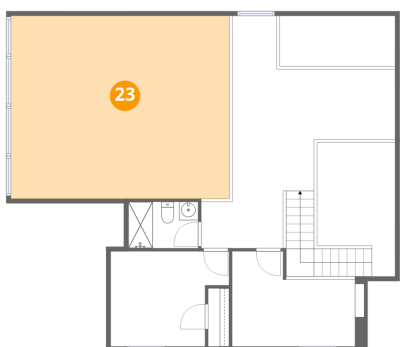
22 Floor 3 - Office



Dimensions: 14'3" x 10'3"
Area: 147 sq. ft
Counted as living area: Yes

Heated: Yes
Finished: Yes
Enclosed: Yes
Contiguous: Yes
Permitted: Yes
Wet space: No
Addition: No
Conversion: No

23 Floor 3 - Open To Below



Dimensions: 23'7" x 19'9"
Area: 465 sq. ft
Counted as living area: No

Heated: No
Finished: No
Enclosed: No
Contiguous: Yes
Permitted: No
Wet space: No
Addition: No
Conversion: No

72 North Ridge Road, Bradford, Merrimack County, New Hampshire, United States, 03221

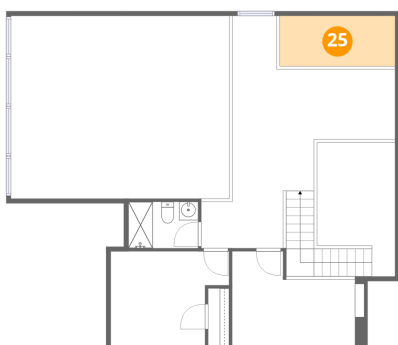
24 Floor 3 - Open To Below



Dimensions: 8'5" x 14'6"
Area: 122 sq. ft
Counted as living area: No

Heated: No
Finished: No
Enclosed: No
Contiguous: Yes
Permitted: No
Wet space: No
Addition: No
Conversion: No

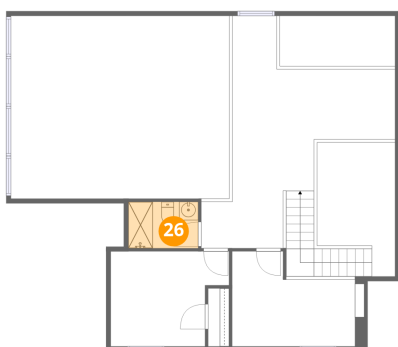
25 Floor 3 - Open To Below



Dimensions: 12'6" x 5'5"
Area: 68 sq. ft
Counted as living area: No

Heated: No
Finished: No
Enclosed: No
Contiguous: Yes
Permitted: No
Wet space: No
Addition: No
Conversion: No

26 Floor 3 - Bath

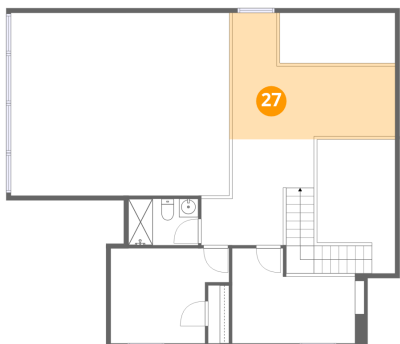


Dimensions: 7'6" x 5'0"
Area: 38 sq. ft
Counted as living area: Yes

Heated: Yes
Finished: Yes
Enclosed: Yes
Contiguous: Yes
Permitted: Yes
Wet space: Yes
Addition: No
Conversion: No

72 North Ridge Road, Bradford, Merrimack County, New Hampshire, United States, 03221

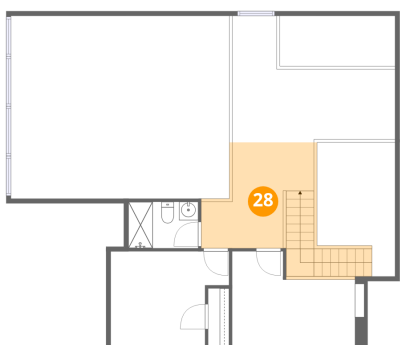
27 Floor 3 - Sitting Room



Dimensions: 17'7" x 13'8"
Area: 240 sq. ft
Counted as living area: Yes

Heated: Yes
Finished: Yes
Enclosed: Yes
Contiguous: Yes
Permitted: Yes
Wet space: No
Addition: No
Conversion: No

28 Floor 3 - Hall



Dimensions: 9'2" x 11'5"
Area: 105 sq. ft
Counted as living area: Yes

Heated: Yes
Finished: Yes
Enclosed: Yes
Contiguous: Yes
Permitted: Yes
Wet space: No
Addition: No
Conversion: No