

Home data report

**17 Valley View Road, Coopers Cove, Hardy, Franklin County,
Virginia, United States, 24101**



Total Area: 2138 sq. ft

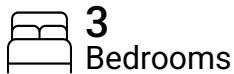
Basement: 625 sq. ft, 1st Floor: 1513 sq. ft

Excluded: Room 130 sq. ft, Utility 170 sq. ft, Laundry 234 sq. ft, Workshop 332 sq. ft,
Undefined 15 sq. ft, Porch 24 sq. ft, Deck 562 sq. ft, Walls: 176 sq. ft

Property summary



2
Floors



3
Bedrooms



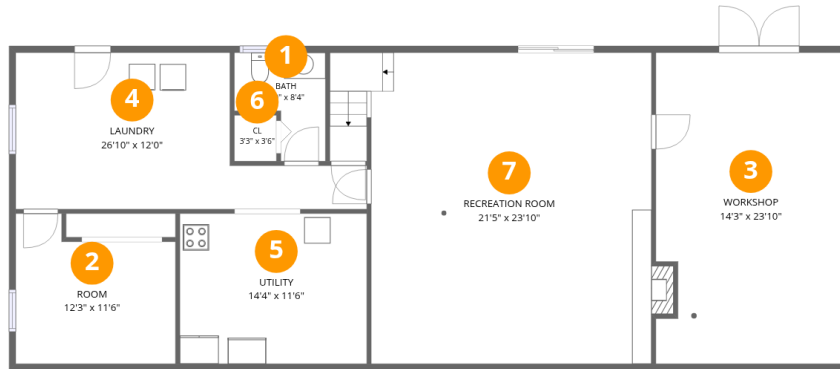
2
Bathrooms



1
Half baths

Home data report

17 Valley View Road, Coopers Cove, Hardy, Franklin County, Virginia, United States, 24101



Room dimensions

Floor 1 Below grade

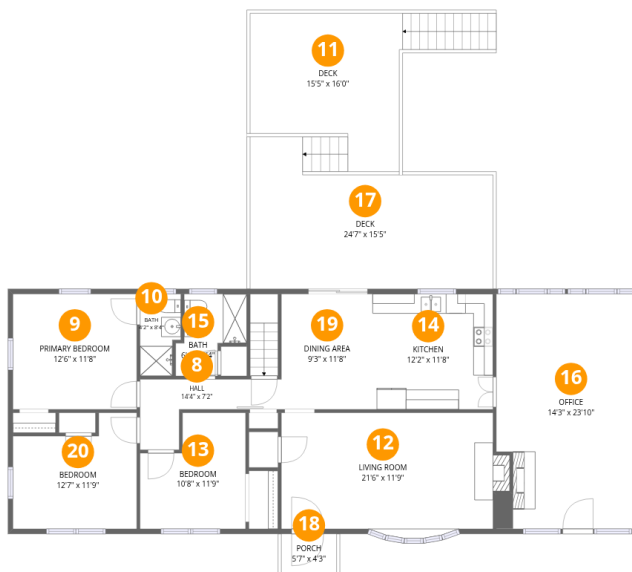
Total:625sqft

Excluded: 881sqft

#		Dimensions	sqft	Counted as living area
1	Bath	7'0" x 8'4"	44 sq. ft	Yes
2	Room	12'3" x 11'6"	122 sq. ft	No
3	Workshop	14'3" x 23'10"	332 sq. ft	No
4	Laundry	26'10" x 12'0"	231 sq. ft	No
5	Utility	14'4" x 11'6"	165 sq. ft	No
6	Cl	3'3" x 3'6"	11 sq. ft	Yes
7	Recreation Room	21'5" x 23'10"	542 sq. ft	Yes

Home data report

17 Valley View Road, Coopers Cove, Hardy, Franklin County, Virginia, United States, 24101



Room dimensions

Floor 2

Total:1513sqft Excluded: 586sqft

#		Dimensions	sqft	Counted as living area
8	Hall	14'4" x 7'2"	60 sq. ft	Yes
9	Primary Bedroom	12'6" x 11'8"	147 sq. ft	Yes
10	Bath	4'2" x 8'4"	31 sq. ft	Yes
11	Deck	15'5" x 16'0"	241 sq. ft	No
12	Living Room	21'6" x 11'9"	265 sq. ft	Yes
13	Bedroom	10'8" x 11'9"	108 sq. ft	Yes
14	Kitchen	12'2" x 11'8"	143 sq. ft	Yes
15	Bath	6'4" x 8'4"	46 sq. ft	Yes
16	Office	14'3" x 23'10"	332 sq. ft	Yes
17	Deck	24'7" x 15'5"	321 sq. ft	No
18	Porch	5'7" x 4'3"	24 sq. ft	No

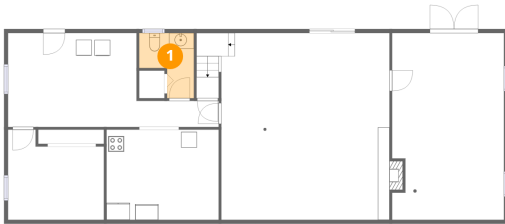
Home data report

**17 Valley View Road, Coopers Cove, Hardy, Franklin County,
Virginia, United States, 24101**

#		Dimensions	sqft	Counted as living area
19	Dining Area	9'3" x 11'8"	108 sq. ft	Yes
20	Bedroom	12'7" x 11'9"	127 sq. ft	Yes

17 Valley View Road, Coopers Cove, Hardy, Franklin County,
Virginia, United States, 24101

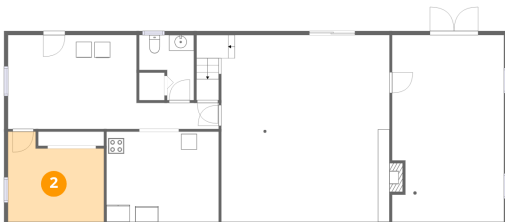
1 Floor 1 - Bath



Dimensions: 7'0" x 8'4"
Area: 44 sq. ft
Counted as living area: No

Heated: Yes
Finished: Yes
Enclosed: Yes
Contiguous: No
Permitted: Yes
Wet space: Yes
Addition: No
Conversion: No

2 Floor 1 - Room

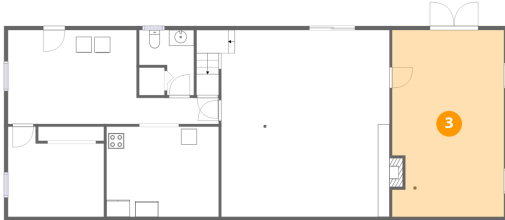


Dimensions: 12'3" x 11'6"
Area: 122 sq. ft
Counted as living area: No

Heated: Yes
Finished: No
Enclosed: Yes
Contiguous: Yes
Permitted: Yes
Wet space: No
Addition: No
Conversion: No

17 Valley View Road, Coopers Cove, Hardy, Franklin County,
Virginia, United States, 24101

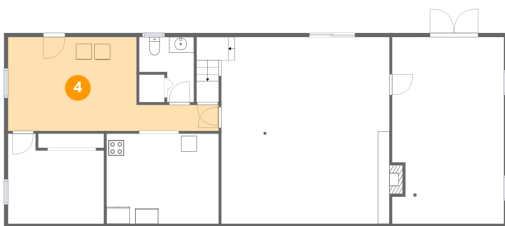
3 Floor 1 - Workshop



Dimensions: 14'3" x 23'10"
Area: 332 sq. ft
Counted as living area: No

Heated: No
Finished: No
Enclosed: Yes
Contiguous: No
Permitted: Yes
Wet space: No
Addition: No
Conversion: No

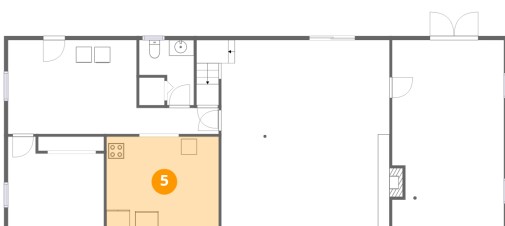
4 Floor 1 - Laundry



Dimensions: 26'10" x 12'0"
Area: 231 sq. ft
Counted as living area: No

Heated: Yes
Finished: No
Enclosed: Yes
Contiguous: Yes
Permitted: Yes
Wet space: No
Addition: No
Conversion: No

5 Floor 1 - Utility



Dimensions: 14'4" x 11'6"
Area: 165 sq. ft
Counted as living area: No

Heated: Yes
Finished: No
Enclosed: Yes
Contiguous: Yes
Permitted: Yes
Wet space: No
Addition: No
Conversion: No

17 Valley View Road, Coopers Cove, Hardy, Franklin County, Virginia, United States, 24101

6 Floor 1 - Cl



Dimensions: 3'3" x 3'6"
Area: 11 sq. ft
Counted as living area: No

Heated: Yes
Finished: Yes
Enclosed: Yes
Contiguous: No
Permitted: Yes
Wet space: No
Addition: No
Conversion: No

7 Floor 1 - Recreation Room



Dimensions: 21'5" x 23'10"
Area: 542 sq. ft
Counted as living area: No

Heated: Yes
Finished: Yes
Enclosed: Yes
Contiguous: No
Permitted: Yes
Wet space: No
Addition: No
Conversion: No

8 Floor 2 - Hall

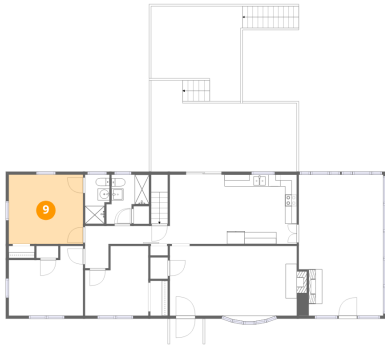


Dimensions: 14'4" x 7'2"
Area: 60 sq. ft
Counted as living area: Yes

Heated: Yes
Finished: Yes
Enclosed: Yes
Contiguous: Yes
Permitted: Yes
Wet space: No
Addition: No
Conversion: No

17 Valley View Road, Coopers Cove, Hardy, Franklin County, Virginia, United States, 24101

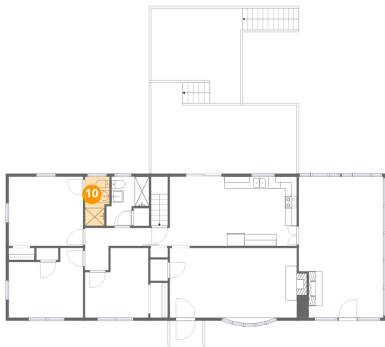
9 Floor 2 - Primary Bedroom



Dimensions: 12'6" x 11'8"
Area: 147 sq. ft
Counted as living area: Yes

Heated: Yes
Finished: Yes
Enclosed: Yes
Contiguous: Yes
Permitted: Yes
Wet space: No
Addition: No
Conversion: No

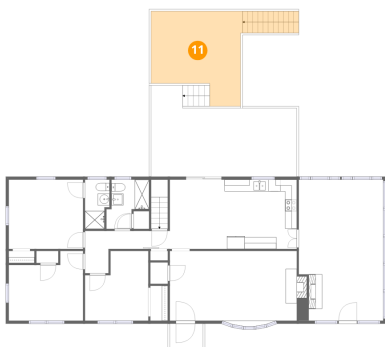
10 Floor 2 - Bath



Dimensions: 4'2" x 8'4"
Area: 31 sq. ft
Counted as living area: Yes

Heated: Yes
Finished: Yes
Enclosed: Yes
Contiguous: Yes
Permitted: Yes
Wet space: Yes
Addition: No
Conversion: No

11 Floor 2 - Deck

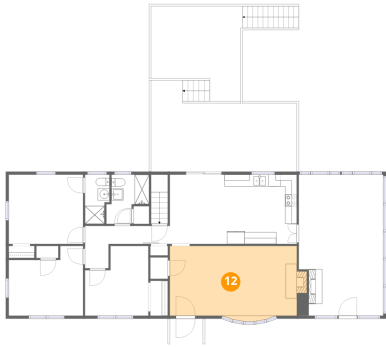


Dimensions: 15'5" x 16'0"
Area: 241 sq. ft
Counted as living area: No

Heated: No
Finished: No
Enclosed: No
Contiguous: Yes
Permitted: Yes
Wet space: No
Addition: No
Conversion: No

17 Valley View Road, Coopers Cove, Hardy, Franklin County,
Virginia, United States, 24101

12 Floor 2 - Living Room



Dimensions: 21'6" x 11'9"
Area: 265 sq. ft
Counted as living area: Yes

Heated: Yes
Finished: Yes
Enclosed: Yes
Contiguous: Yes
Permitted: Yes
Wet space: No
Addition: No
Conversion: No

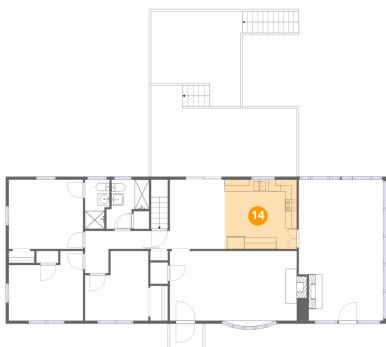
13 Floor 2 - Bedroom



Dimensions: 10'8" x 11'9"
Area: 108 sq. ft
Counted as living area: Yes

Heated: Yes
Finished: Yes
Enclosed: Yes
Contiguous: Yes
Permitted: Yes
Wet space: No
Addition: No
Conversion: No

14 Floor 2 - Kitchen

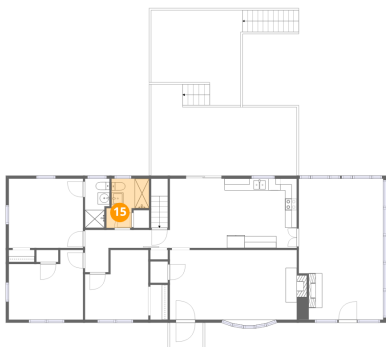


Dimensions: 12'2" x 11'8"
Area: 143 sq. ft
Counted as living area: Yes

Heated: Yes
Finished: Yes
Enclosed: Yes
Contiguous: Yes
Permitted: Yes
Wet space: No
Addition: No
Conversion: No

17 Valley View Road, Coopers Cove, Hardy, Franklin County, Virginia, United States, 24101

15 Floor 2 - Bath



Dimensions: 6'4" x 8'4"
Area: 46 sq. ft
Counted as living area: Yes

Heated: Yes
Finished: Yes
Enclosed: Yes
Contiguous: Yes
Permitted: Yes
Wet space: Yes
Addition: No
Conversion: No

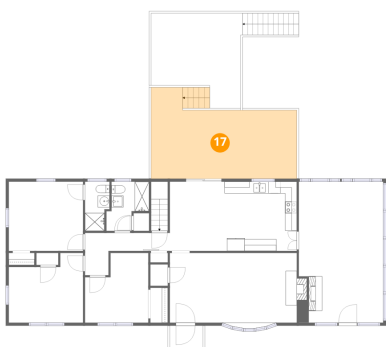
16 Floor 2 - Office



Dimensions: 14'3" x 23'10"
Area: 332 sq. ft
Counted as living area: Yes

Heated: Yes
Finished: Yes
Enclosed: Yes
Contiguous: Yes
Permitted: Yes
Wet space: No
Addition: No
Conversion: No

17 Floor 2 - Deck

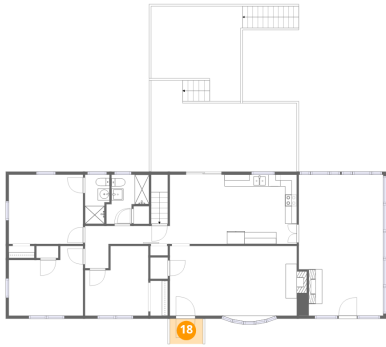


Dimensions: 24'7" x 15'5"
Area: 321 sq. ft
Counted as living area: No

Heated: No
Finished: No
Enclosed: No
Contiguous: Yes
Permitted: Yes
Wet space: No
Addition: No
Conversion: No

17 Valley View Road, Coopers Cove, Hardy, Franklin County,
Virginia, United States, 24101

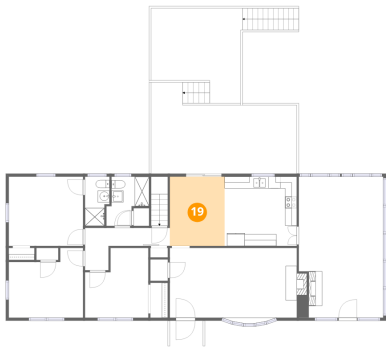
18 Floor 2 - Porch



Dimensions: 5'7" x 4'3"
Area: 24 sq. ft
Counted as living area: No

Heated: No
Finished: No
Enclosed: No
Contiguous: Yes
Permitted: Yes
Wet space: No
Addition: No
Conversion: No

19 Floor 2 - Dining Area



Dimensions: 9'3" x 11'8"
Area: 108 sq. ft
Counted as living area: Yes

Heated: Yes
Finished: Yes
Enclosed: Yes
Contiguous: Yes
Permitted: Yes
Wet space: No
Addition: No
Conversion: No

20 Floor 2 - Bedroom



Dimensions: 12'7" x 11'9"
Area: 127 sq. ft
Counted as living area: Yes

Heated: Yes
Finished: Yes
Enclosed: Yes
Contiguous: Yes
Permitted: Yes
Wet space: No
Addition: No
Conversion: No