

## Home data report

11245 Humber Road, Weeki Wachee, Hernando County, Florida, United States, 34614



**Total Area: 2383 sq. ft**

Basement: 0 sq. ft, 1st Floor: 2383 sq. ft

Excluded: Pole barn 932 sq. ft, Storage 269 sq. ft, Screened porch 564 sq. ft, Porch 143 sq. ft, Patio 808 sq. ft, Garage 923 sq. ft, Walls: 287 sq. ft

## Property summary



**2**  
Floors



**3**  
Bedrooms



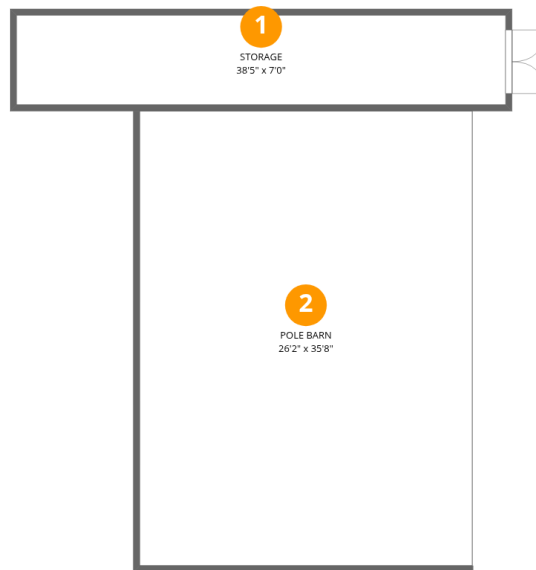
**2**  
Bathrooms



**1**  
Garages

Home data report

11245 Humber Road, Weeki Wachee, Hernando County, Florida, United States, 34614



### Room dimensions

Floor 1 Below grade

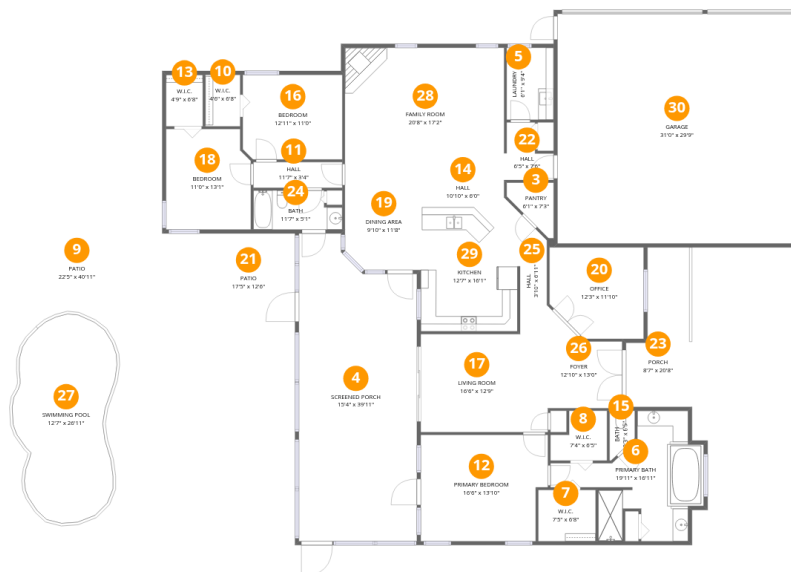
Total:0sqft

Excluded: 1201sqft

#		Dimensions	sqft	Counted as living area
1	Storage	38'5" x 7'0"	269 sq. ft	No
2	Pole Barn	26'2" x 35'8"	932 sq. ft	No

# Home data report

11245 Humber Road, Weeki Wachee, Hernando County, Florida, United States, 34614



## Room dimensions

Floor 2

Total:2383sqft

Excluded: 2438sqft

#		Dimensions	sqft	Counted as living area
3	Pantry	6'1" x 7'3"	29 sq. ft	Yes
4	Screened Porch	15'4" x 39'11"	564 sq. ft	No
5	Laundry	6'1" x 9'4"	57 sq. ft	Yes
6	Primary Bath	19'11" x 16'11"	192 sq. ft	Yes
7	W.I.C.	7'5" x 6'8"	50 sq. ft	Yes
8	W.I.C.	7'4" x 6'5"	40 sq. ft	Yes
9	Patio	22'5" x 40'11"	919 sq. ft	No
10	W.I.C.	4'6" x 6'8"	30 sq. ft	Yes
11	Hall	11'7" x 3'4"	39 sq. ft	Yes
12	Primary Bedroom	16'6" x 13'10"	217 sq. ft	Yes
13	W.I.C.	4'9" x 6'8"	32 sq. ft	Yes

Home data report

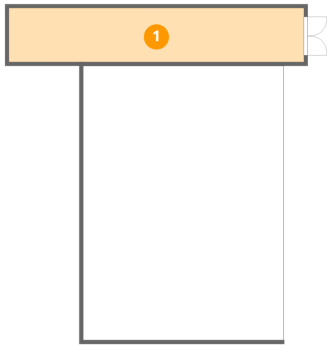
**11245 Humber Road, Weeki Wachee, Hernando County, Florida,  
United States, 34614**

#		Dimensions	sqft	Counted as living area
14	Hall	10'10" x 6'0"	68 sq. ft	Yes
15	Bath	3'3" x 6'5"	17 sq. ft	Yes
16	Bedroom	12'11" x 11'0"	141 sq. ft	Yes
17	Living Room	16'6" x 12'9"	194 sq. ft	Yes
18	Bedroom	11'0" x 13'1"	139 sq. ft	Yes
19	Dining Area	9'10" x 11'8"	112 sq. ft	Yes
20	Office	12'3" x 11'10"	135 sq. ft	Yes
21	Patio	17'5" x 12'6"	179 sq. ft	No
22	Hall	6'5" x 7'6"	37 sq. ft	Yes
23	Porch	8'7" x 20'8"	143 sq. ft	No
24	Bath	11'7" x 5'1"	53 sq. ft	Yes
25	Hall	3'10" x 6'11"	25 sq. ft	Yes
26	Foyer	12'10" x 13'0"	124 sq. ft	Yes
27	Swimming Pool	12'7" x 26'11"	288 sq. ft	No
28	Family Room	20'8" x 17'2"	355 sq. ft	Yes
29	Kitchen	12'7" x 16'1"	186 sq. ft	Yes
30	Garage	31'0" x 29'9"	923 sq. ft	No

11245 Humber Road, Weeki Wachee, Hernando County, Florida,  
United States, 34614

## 1 Floor 1 - Storage

---

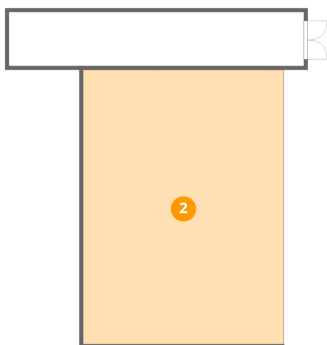


Dimensions: 38'5" x 7'0"  
Area: 269 sq. ft  
Counted as living area: No

Heated: No  
Finished: No  
Enclosed: No  
Contiguous: Yes  
Permitted: Yes  
Wet space: No  
Addition: No  
Conversion: No

## 2 Floor 1 - Pole Barn

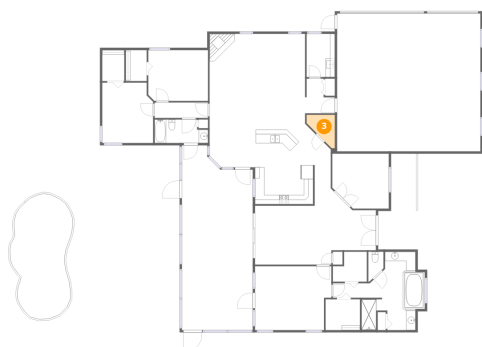
---



Dimensions: 26'2" x 35'8"  
Area: 932 sq. ft  
Counted as living area: No

Heated: No  
Finished: Yes  
Enclosed: No  
Contiguous: Yes  
Permitted: Yes  
Wet space: No  
Addition: No  
Conversion: No

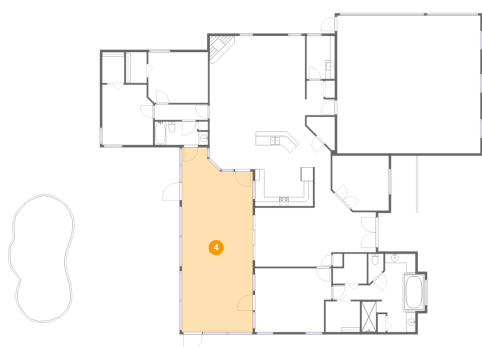
### 3 Floor 2 - Pantry



Dimensions: 6'1" x 7'3"  
Area: 29 sq. ft  
Counted as living area: Yes

Heated: Yes  
Finished: Yes  
Enclosed: Yes  
Contiguous: Yes  
Permitted: Yes  
Wet space: No  
Addition: No  
Conversion: No

### 4 Floor 2 - Screened Porch



Dimensions: 15'4" x 39'11"  
Area: 564 sq. ft  
Counted as living area: No

Heated: No  
Finished: No  
Enclosed: No  
Contiguous: Yes  
Permitted: Yes  
Wet space: No  
Addition: No  
Conversion: No

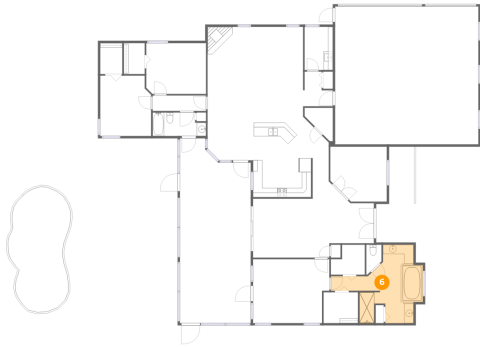
### 5 Floor 2 - Laundry



Dimensions: 6'1" x 9'4"  
Area: 57 sq. ft  
Counted as living area: Yes

Heated: Yes  
Finished: Yes  
Enclosed: Yes  
Contiguous: Yes  
Permitted: Yes  
Wet space: No  
Addition: No  
Conversion: No

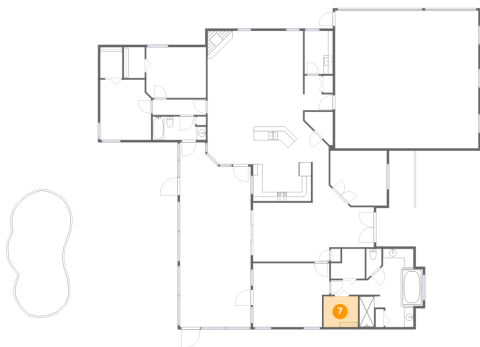
**6** Floor 2 - Primary Bath



Dimensions: 19'11" x 16'11"  
Area: 192 sq. ft  
Counted as living area: Yes

Heated: Yes  
Finished: Yes  
Enclosed: Yes  
Contiguous: Yes  
Permitted: Yes  
Wet space: Yes  
Addition: No  
Conversion: No

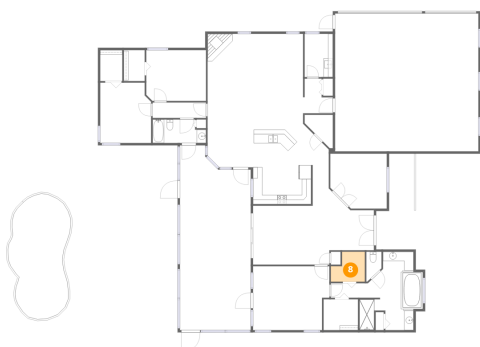
**7** Floor 2 - W.I.C.



Dimensions: 7'5" x 6'8"  
Area: 50 sq. ft  
Counted as living area: Yes

Heated: Yes  
Finished: Yes  
Enclosed: Yes  
Contiguous: Yes  
Permitted: Yes  
Wet space: No  
Addition: No  
Conversion: No

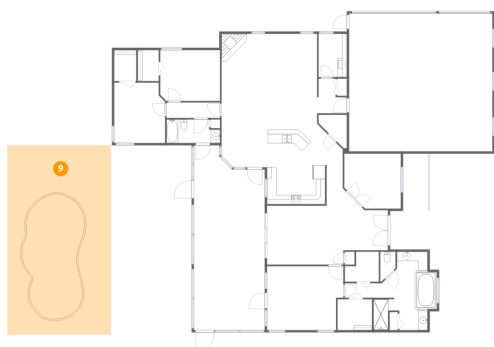
**8** Floor 2 - W.I.C.



Dimensions: 7'4" x 6'5"  
Area: 40 sq. ft  
Counted as living area: Yes

Heated: Yes  
Finished: Yes  
Enclosed: Yes  
Contiguous: Yes  
Permitted: Yes  
Wet space: No  
Addition: No  
Conversion: No

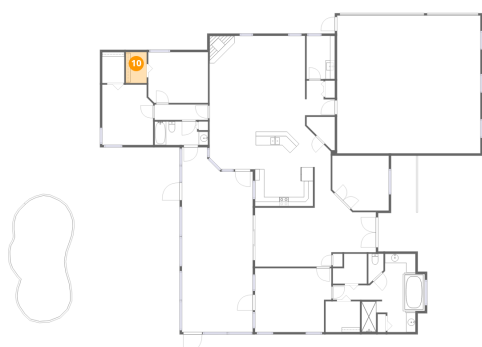
### 9 Floor 2 - Patio



Dimensions: 22'5" x 40'11"  
Area: 919 sq. ft  
Counted as living area: No

Heated: No  
Finished: No  
Enclosed: No  
Contiguous: Yes  
Permitted: Yes  
Wet space: No  
Addition: No  
Conversion: No

### 10 Floor 2 - W.I.C.



Dimensions: 4'6" x 6'8"  
Area: 30 sq. ft  
Counted as living area: Yes

Heated: Yes  
Finished: Yes  
Enclosed: Yes  
Contiguous: Yes  
Permitted: Yes  
Wet space: No  
Addition: No  
Conversion: No

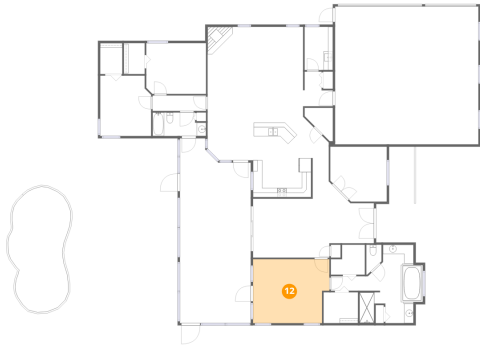
### 11 Floor 2 - Hall



Dimensions: 11'7" x 3'4"  
Area: 39 sq. ft  
Counted as living area: Yes

Heated: Yes  
Finished: Yes  
Enclosed: Yes  
Contiguous: Yes  
Permitted: Yes  
Wet space: No  
Addition: No  
Conversion: No

## 12 Floor 2 - Primary Bedroom



Dimensions: 16'6" x 13'10"  
Area: 217 sq. ft  
Counted as living area: Yes

Heated: Yes  
Finished: Yes  
Enclosed: Yes  
Contiguous: Yes  
Permitted: Yes  
Wet space: No  
Addition: No  
Conversion: No

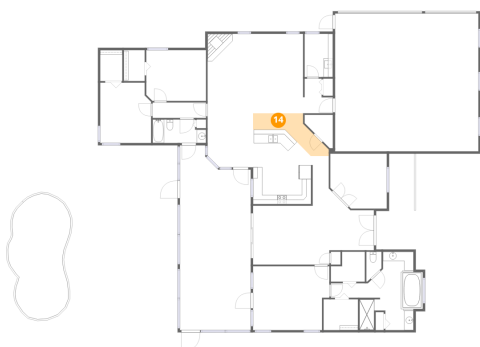
## 13 Floor 2 - W.I.C.



Dimensions: 4'9" x 6'8"  
Area: 32 sq. ft  
Counted as living area: Yes

Heated: Yes  
Finished: Yes  
Enclosed: Yes  
Contiguous: Yes  
Permitted: Yes  
Wet space: No  
Addition: No  
Conversion: No

## 14 Floor 2 - Hall



Dimensions: 10'10" x 6'0"  
Area: 68 sq. ft  
Counted as living area: Yes

Heated: Yes  
Finished: Yes  
Enclosed: Yes  
Contiguous: Yes  
Permitted: Yes  
Wet space: No  
Addition: No  
Conversion: No

**15** Floor 2 - Bath



Dimensions: 3'3" x 6'5"  
Area: 17 sq. ft  
Counted as living area: Yes

Heated: Yes  
Finished: Yes  
Enclosed: Yes  
Contiguous: Yes  
Permitted: Yes  
Wet space: No  
Addition: No  
Conversion: No

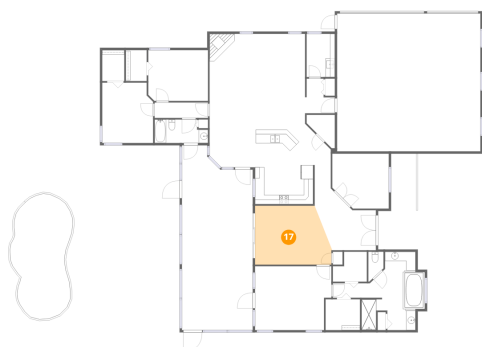
**16** Floor 2 - Bedroom



Dimensions: 12'11" x 11'0"  
Area: 141 sq. ft  
Counted as living area: Yes

Heated: Yes  
Finished: Yes  
Enclosed: Yes  
Contiguous: Yes  
Permitted: Yes  
Wet space: No  
Addition: No  
Conversion: No

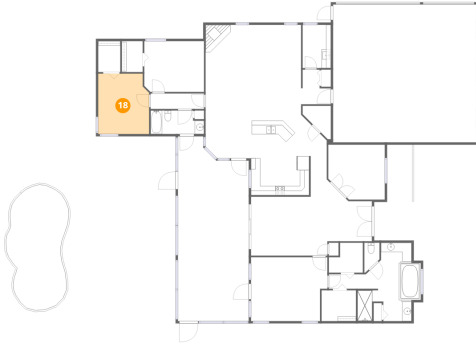
**17** Floor 2 - Living Room



Dimensions: 16'6" x 12'9"  
Area: 194 sq. ft  
Counted as living area: Yes

Heated: Yes  
Finished: Yes  
Enclosed: Yes  
Contiguous: Yes  
Permitted: Yes  
Wet space: No  
Addition: No  
Conversion: No

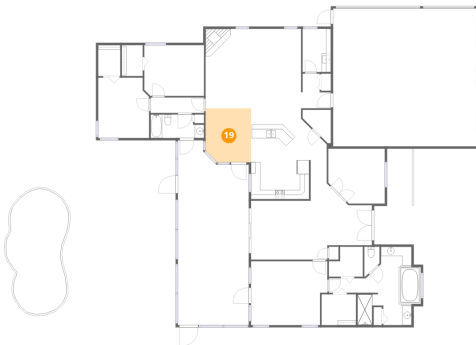
**18** Floor 2 - Bedroom



Dimensions: 11'0" x 13'1"  
Area: 139 sq. ft  
Counted as living area: Yes

Heated: Yes  
Finished: Yes  
Enclosed: Yes  
Contiguous: Yes  
Permitted: Yes  
Wet space: No  
Addition: No  
Conversion: No

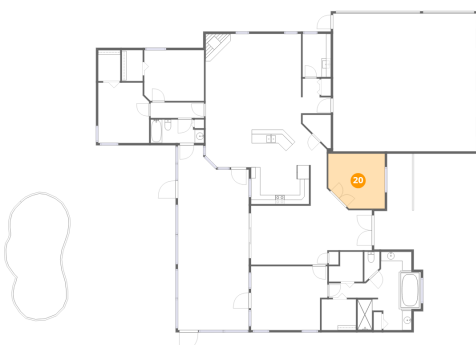
**19** Floor 2 - Dining Area



Dimensions: 9'10" x 11'8"  
Area: 112 sq. ft  
Counted as living area: Yes

Heated: Yes  
Finished: Yes  
Enclosed: Yes  
Contiguous: Yes  
Permitted: Yes  
Wet space: No  
Addition: No  
Conversion: No

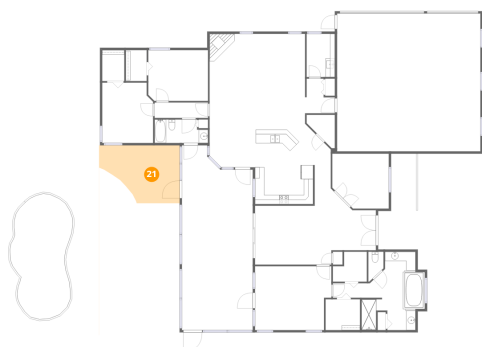
**20** Floor 2 - Office



Dimensions: 12'3" x 11'10"  
Area: 135 sq. ft  
Counted as living area: Yes

Heated: Yes  
Finished: Yes  
Enclosed: Yes  
Contiguous: Yes  
Permitted: Yes  
Wet space: No  
Addition: No  
Conversion: No

### 21 Floor 2 - Patio



Dimensions: 17'5" x 12'6"  
Area: 179 sq. ft  
Counted as living area: No

Heated: No  
Finished: No  
Enclosed: No  
Contiguous: Yes  
Permitted: Yes  
Wet space: No  
Addition: No  
Conversion: No

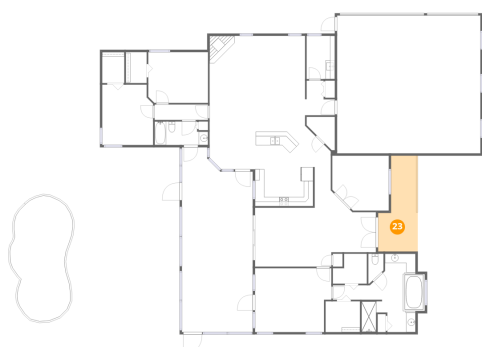
### 22 Floor 2 - Hall



Dimensions: 6'5" x 7'6"  
Area: 37 sq. ft  
Counted as living area: Yes

Heated: Yes  
Finished: Yes  
Enclosed: Yes  
Contiguous: Yes  
Permitted: Yes  
Wet space: No  
Addition: No  
Conversion: No

### 23 Floor 2 - Porch



Dimensions: 8'7" x 20'8"  
Area: 143 sq. ft  
Counted as living area: No

Heated: No  
Finished: No  
Enclosed: No  
Contiguous: Yes  
Permitted: Yes  
Wet space: No  
Addition: No  
Conversion: No

**24** Floor 2 - Bath



Dimensions: 11'7" x 5'1"  
Area: 53 sq. ft  
Counted as living area: Yes

Heated: Yes  
Finished: Yes  
Enclosed: Yes  
Contiguous: Yes  
Permitted: Yes  
Wet space: Yes  
Addition: No  
Conversion: No

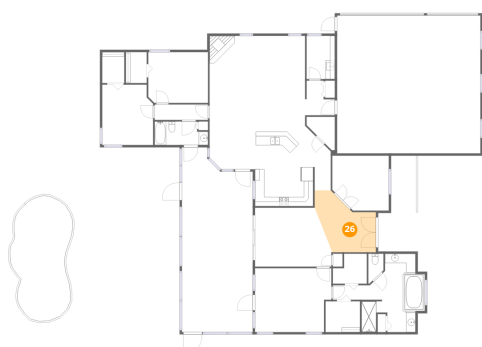
**25** Floor 2 - Hall



Dimensions: 3'10" x 6'11"  
Area: 25 sq. ft  
Counted as living area: Yes

Heated: Yes  
Finished: Yes  
Enclosed: Yes  
Contiguous: Yes  
Permitted: Yes  
Wet space: No  
Addition: No  
Conversion: No

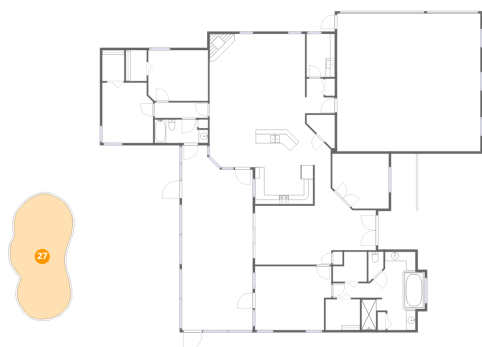
**26** Floor 2 - Foyer



Dimensions: 12'10" x 13'0"  
Area: 124 sq. ft  
Counted as living area: Yes

Heated: Yes  
Finished: Yes  
Enclosed: Yes  
Contiguous: Yes  
Permitted: Yes  
Wet space: No  
Addition: No  
Conversion: No

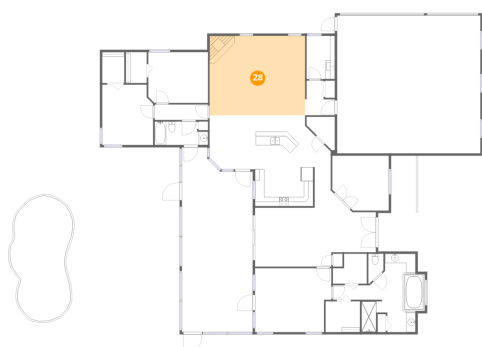
## 27 Floor 2 - Swimming Pool



Dimensions: 12'7" x 26'11"  
Area: 288 sq. ft  
Counted as living area: No

Heated: No  
Finished: No  
Enclosed: No  
Contiguous: Yes  
Permitted: No  
Wet space: No  
Addition: No  
Conversion: No

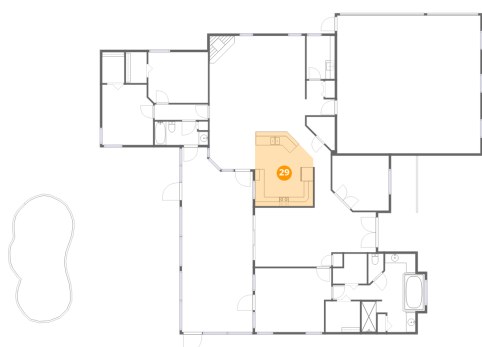
## 28 Floor 2 - Family Room



Dimensions: 20'8" x 17'2"  
Area: 355 sq. ft  
Counted as living area: Yes

Heated: Yes  
Finished: Yes  
Enclosed: Yes  
Contiguous: Yes  
Permitted: Yes  
Wet space: No  
Addition: No  
Conversion: No

## 29 Floor 2 - Kitchen



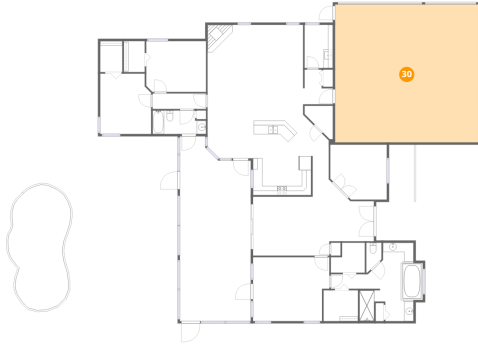
Dimensions: 12'7" x 16'1"  
Area: 186 sq. ft  
Counted as living area: Yes

Heated: Yes  
Finished: Yes  
Enclosed: Yes  
Contiguous: Yes  
Permitted: Yes  
Wet space: No  
Addition: No  
Conversion: No

Home data report

11245 Humber Road, Weeki Wachee, Hernando County, Florida,  
United States, 34614

## 30 Floor 2 - Garage



Dimensions: 31'0" x 29'9"  
Area: 923 sq. ft  
Counted as living area: No

Heated: No  
Finished: No  
Enclosed: Yes  
Contiguous: Yes  
Permitted: Yes  
Wet space: No  
Addition: No  
Conversion: No