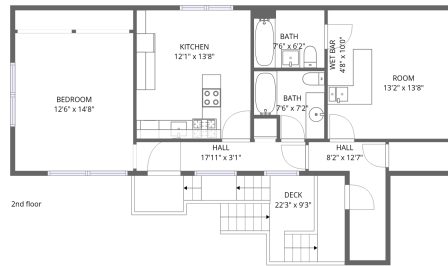


Home data report

335 E 11th St, Loveland, CO, US

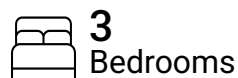


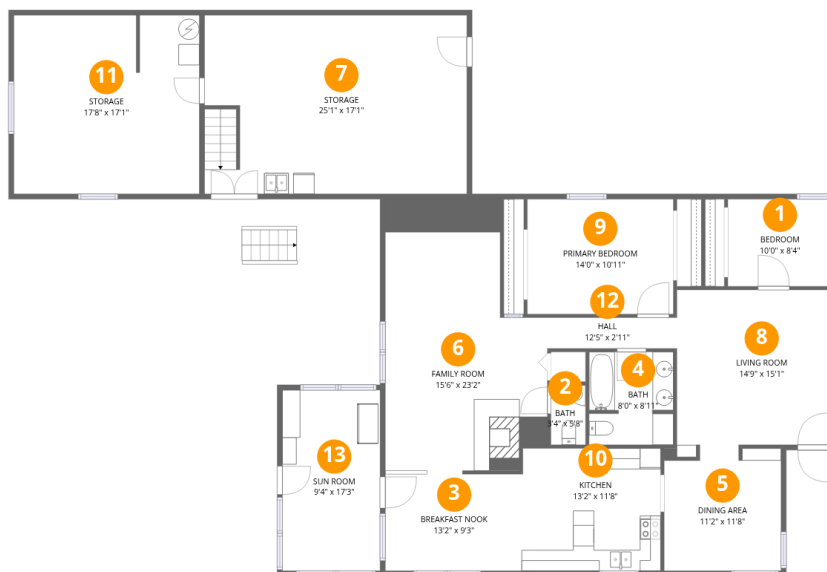
Total Area: 2457 sq. ft

1st Floor: 1629 sq. ft, 2nd Floor: 828 sq. ft

Excluded: Storage 732 sq. ft, Deck 132 sq. ft, Walls: 229 sq. ft

Property summary





Room dimensions

Floor 1

Total: 1629 sqft Excluded: 732 sqft

#		Dimensions	sqft	Counted as living area
1	Bedroom	10'0" x 8'4"	83 sq. ft	Yes
2	Bath	3'4" x 5'8"	19 sq. ft	Yes
3	Breakfast Nook	13'2" x 9'3"	122 sq. ft	Yes
4	Bath	8'0" x 8'11"	71 sq. ft	Yes
5	Dining Area	11'2" x 11'8"	131 sq. ft	Yes
6	Family Room	15'6" x 23'2"	359 sq. ft	Yes
7	Storage	25'1" x 17'1"	429 sq. ft	No
8	Living Room	14'9" x 15'1"	222 sq. ft	Yes
9	Primary Bedroom	14'0" x 10'11"	153 sq. ft	Yes
10	Kitchen	13'2" x 11'8"	154 sq. ft	Yes
11	Storage	17'8" x 17'1"	301 sq. ft	No

Home data report

335 E 11th St,Loveland,CO,US

#		Dimensions	sqft	Counted as living area
12	Hall	12'5" x 2'11"	36 sq. ft	Yes
13	Sun Room	9'4" x 17'3"	161 sq. ft	Yes



Room dimensions

Floor 2

Total:828sqft

Excluded: 132sqft

#		Dimensions	sqft	Counted as living area
14	Deck	22'3" x 9'3"	206 sq. ft	No
15	Room	13'2" x 13'8"	180 sq. ft	Yes
16	Bath	7'6" x 7'2"	54 sq. ft	Yes
17	Hall	8'2" x 12'7"	103 sq. ft	Yes
18	Wet Bar	4'8" x 10'0"	47 sq. ft	Yes
19	Bath	7'6" x 6'2"	46 sq. ft	Yes
20	Bedroom	12'6" x 14'8"	184 sq. ft	Yes
21	Kitchen	12'1" x 13'8"	165 sq. ft	Yes
22	Hall	17'11" x 3'1"	55 sq. ft	Yes

1 Floor 1 - Bedroom



Dimensions: 10'0" x 8'4"
Area: 83 sq. ft
Counted as living area: Yes

Heated: Yes
Finished: Yes
Enclosed: Yes
Contiguous: Yes
Permitted: Yes
Wet space: No
Addition: No
Conversion: No

2 Floor 1 - Bath



Dimensions: 3'4" x 5'8"
Area: 19 sq. ft
Counted as living area: Yes

Heated: Yes
Finished: Yes
Enclosed: Yes
Contiguous: Yes
Permitted: Yes
Wet space: Yes
Addition: No
Conversion: No

3 Floor 1 - Breakfast Nook



Dimensions: 13'2" x 9'3"
Area: 122 sq. ft
Counted as living area: Yes

Heated: Yes
Finished: Yes
Enclosed: Yes
Contiguous: Yes
Permitted: Yes
Wet space: No
Addition: No
Conversion: No

4 Floor 1 - Bath



Dimensions: 8'0" x 8'11"
Area: 71 sq. ft
Counted as living area: Yes

Heated: Yes
Finished: Yes
Enclosed: Yes
Contiguous: Yes
Permitted: Yes
Wet space: Yes
Addition: No
Conversion: No

5 Floor 1 - Dining Area



Dimensions: 11'2" x 11'8"
Area: 131 sq. ft
Counted as living area: Yes

Heated: Yes
Finished: Yes
Enclosed: Yes
Contiguous: Yes
Permitted: Yes
Wet space: No
Addition: No
Conversion: No

6 Floor 1 - Family Room



Dimensions: 15'6" x 23'2"
Area: 359 sq. ft
Counted as living area: Yes

Heated: Yes
Finished: Yes
Enclosed: Yes
Contiguous: Yes
Permitted: Yes
Wet space: No
Addition: No
Conversion: No

7 Floor 1 - Storage



Dimensions: 25'1" x 17'1"
Area: 429 sq. ft
Counted as living area: No

Heated: No
Finished: No
Enclosed: No
Contiguous: Yes
Permitted: Yes
Wet space: No
Addition: No
Conversion: No

8 Floor 1 - Living Room



Dimensions: 14'9" x 15'1"
Area: 222 sq. ft
Counted as living area: Yes

Heated: Yes
Finished: Yes
Enclosed: Yes
Contiguous: Yes
Permitted: Yes
Wet space: No
Addition: No
Conversion: No

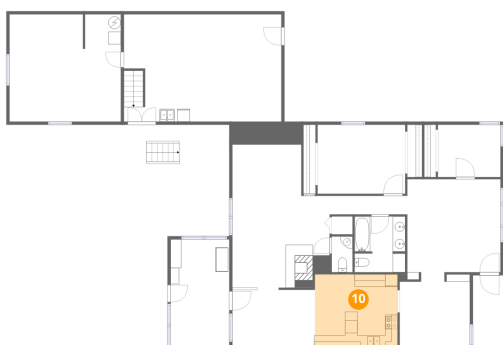
9 Floor 1 - Primary Bedroom



Dimensions: 14'0" x 10'11"
Area: 153 sq. ft
Counted as living area: Yes

Heated: Yes
Finished: Yes
Enclosed: Yes
Contiguous: Yes
Permitted: Yes
Wet space: No
Addition: No
Conversion: No

10 Floor 1 - Kitchen



Dimensions: 13'2" x 11'8"
Area: 154 sq. ft
Counted as living area: Yes

Heated: Yes
Finished: Yes
Enclosed: Yes
Contiguous: Yes
Permitted: Yes
Wet space: No
Addition: No
Conversion: No

11 Floor 1 - Storage



Dimensions: 17'8" x 17'1"
Area: 301 sq. ft
Counted as living area: No

Heated: No
Finished: No
Enclosed: No
Contiguous: Yes
Permitted: Yes
Wet space: No
Addition: No
Conversion: No

12 Floor 1 - Hall



Dimensions: 12'5" x 2'11"
Area: 36 sq. ft
Counted as living area: Yes

Heated: Yes
Finished: Yes
Enclosed: Yes
Contiguous: Yes
Permitted: Yes
Wet space: No
Addition: No
Conversion: No

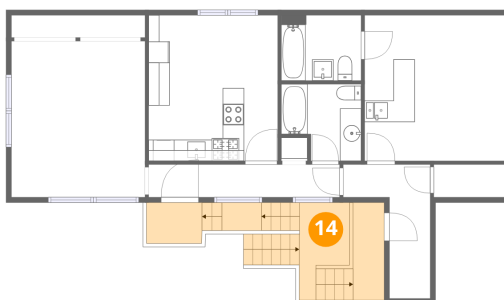
13 Floor 1 - Sun Room



Dimensions: 9'4" x 17'3"
Area: 161 sq. ft
Counted as living area: Yes

Heated: Yes
Finished: Yes
Enclosed: Yes
Contiguous: Yes
Permitted: Yes
Wet space: No
Addition: No
Conversion: No

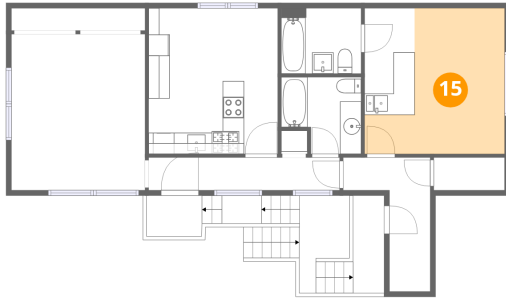
14 Floor 2 - Deck



Dimensions: 22'3" x 9'3"
Area: 206 sq. ft
Counted as living area: No

Heated: No
Finished: No
Enclosed: No
Contiguous: Yes
Permitted: Yes
Wet space: No
Addition: No
Conversion: No

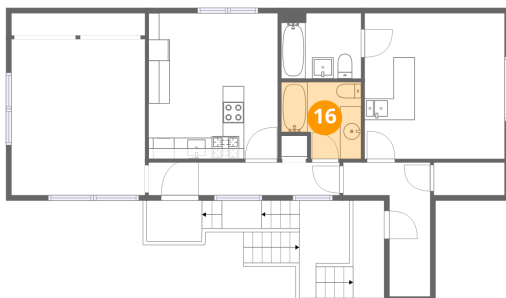
15 Floor 2 - Room



Dimensions: 13'2" x 13'8"
Area: 180 sq. ft
Counted as living area: Yes

Heated: Yes
Finished: Yes
Enclosed: Yes
Contiguous: Yes
Permitted: Yes
Wet space: No
Addition: No
Conversion: No

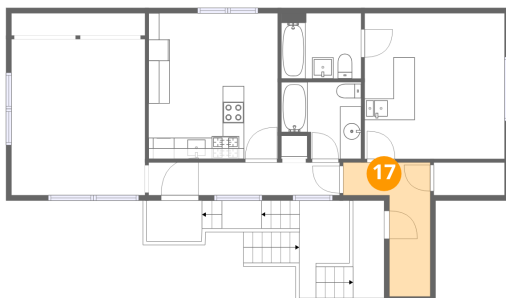
16 Floor 2 - Bath



Dimensions: 7'6" x 7'2"
Area: 54 sq. ft
Counted as living area: Yes

Heated: Yes
Finished: Yes
Enclosed: Yes
Contiguous: Yes
Permitted: Yes
Wet space: Yes
Addition: No
Conversion: No

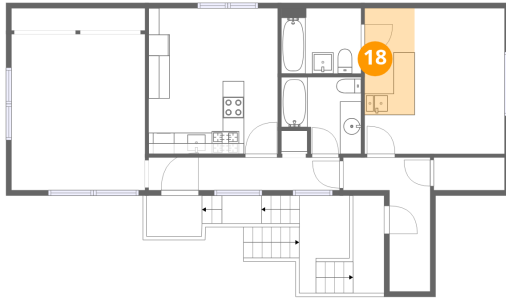
17 Floor 2 - Hall



Dimensions: 8'2" x 12'7"
Area: 103 sq. ft
Counted as living area: Yes

Heated: Yes
Finished: Yes
Enclosed: Yes
Contiguous: Yes
Permitted: Yes
Wet space: No
Addition: No
Conversion: No

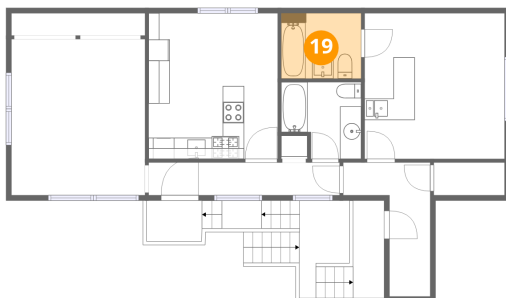
18 Floor 2 - Wet Bar



Dimensions: 4'8" x 10'0"
Area: 47 sq. ft
Counted as living area: Yes

Heated: Yes
Finished: Yes
Enclosed: Yes
Contiguous: Yes
Permitted: Yes
Wet space: No
Addition: No
Conversion: No

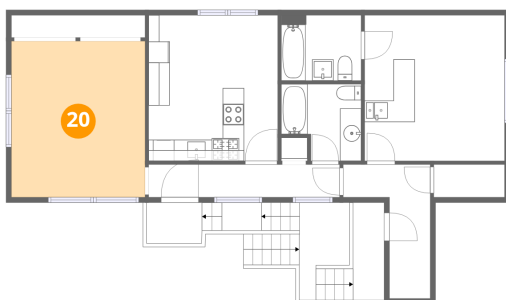
19 Floor 2 - Bath



Dimensions: 7'6" x 6'2"
Area: 46 sq. ft
Counted as living area: Yes

Heated: Yes
Finished: Yes
Enclosed: Yes
Contiguous: Yes
Permitted: Yes
Wet space: Yes
Addition: No
Conversion: No

20 Floor 2 - Bedroom



Dimensions: 12'6" x 14'8"
Area: 184 sq. ft
Counted as living area: Yes

Heated: Yes
Finished: Yes
Enclosed: Yes
Contiguous: Yes
Permitted: Yes
Wet space: No
Addition: No
Conversion: No

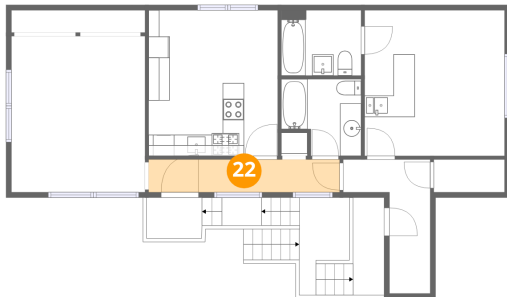
21 Floor 2 - Kitchen



Dimensions: 12'1" x 13'8"
Area: 165 sq. ft
Counted as living area: Yes

Heated: Yes
Finished: Yes
Enclosed: Yes
Contiguous: Yes
Permitted: Yes
Wet space: No
Addition: No
Conversion: No

22 Floor 2 - Hall



Dimensions: 17'11" x 3'1"
Area: 55 sq. ft
Counted as living area: Yes

Heated: Yes
Finished: Yes
Enclosed: Yes
Contiguous: Yes
Permitted: Yes
Wet space: No
Addition: No
Conversion: No