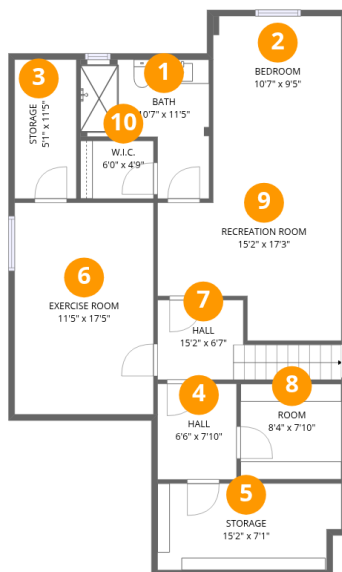




212 Sheldon Road, Portland, United Counties of Leeds and Grenville, Ontario, Canada, K0G 1V0



Room dimensions

Floor 1 Below grade

Total:525sqft

Excluded: 488sqft

#		Dimensions	sqft	Counted as living area
1	Bath	10'7" x 11'5"	89 sq. ft	Yes
2	Bedroom	10'7" x 9'5"	100 sq. ft	Yes
3	Storage	5'1" x 11'5"	58 sq. ft	No
4	Hall	6'6" x 7'10"	51 sq. ft	No
5	Storage	15'2" x 7'1"	104 sq. ft	No
6	Exercise Room	11'5" x 17'5"	199 sq. ft	No
7	Hall	15'2" x 6'7"	70 sq. ft	Yes
8	Room	8'4" x 7'10"	65 sq. ft	No
9	Recreation Room	15'2" x 17'3"	207 sq. ft	Yes
10	W.I.C.	6'0" x 4'9"	29 sq. ft	Yes

## Home data report

212 Sheldon Road, Portland, United Counties of Leeds and Grenville, Ontario, Canada, K0G 1V0



## Room dimensions

Floor 2

Total:2046sqft

Excluded: 566sqft

#		Dimensions	sqft	Counted as living area
11	Primary Bath	12'6" x 9'11"	115 sq. ft	Yes
12	Office	16'0" x 9'1"	140 sq. ft	Yes
13	Bedroom	10'2" x 11'0"	111 sq. ft	Yes
14	Primary Bedroom	17'10" x 11'11"	213 sq. ft	Yes
15	Breakfast Nook	11'8" x 10'0"	111 sq. ft	Yes
16	Laundry	15'8" x 5'9"	90 sq. ft	Yes
17	Bedroom	13'11" x 9'11"	138 sq. ft	Yes
18	W.I.C.	6'4" x 9'11"	56 sq. ft	Yes
19	Living Room	15'11" x 20'3"	318 sq. ft	Yes
20	Hall	15'3" x 5'1"	69 sq. ft	Yes
21	Foyer	5'1" x 6'11"	35 sq. ft	Yes

Home data report

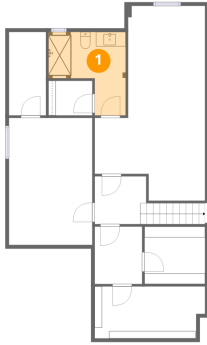
**212 Sheldon Road, Portland, United Counties of Leeds and  
Grenville, Ontario, Canada, K0G 1V0**

#		Dimensions	sqft	Counted as living area
22	Kitchen	14'1" x 13'1"	169 sq. ft	Yes
23	Dining Room	9'11" x 16'3"	161 sq. ft	Yes
24	Hall	2'11" x 5'3"	15 sq. ft	Yes
25	Garage	22'0" x 29'0"	566 sq. ft	No
26	Hall	3'0" x 10'4"	31 sq. ft	Yes
27	Hall	17'1" x 6'8"	94 sq. ft	Yes
28	Bath	8'7" x 5'1"	43 sq. ft	Yes

212 Sheldon Road, Portland, United Counties of Leeds and Grenville, Ontario, Canada, K0G 1V0

**1** Floor 1 - Bath

---

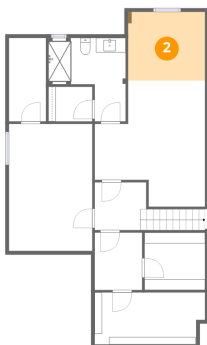


Dimensions: 10'7" x 11'5"  
Area: 89 sq. ft  
Counted as living area: Yes

Heated: Yes  
Finished: Yes  
Enclosed: Yes  
Contiguous: Yes  
Permitted: Yes  
Wet space: Yes  
Addition: No  
Conversion: No

**2** Floor 1 - Bedroom

---

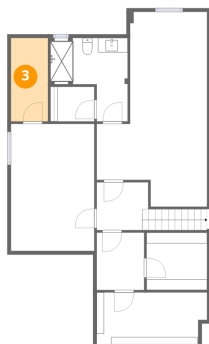


Dimensions: 10'7" x 9'5"  
Area: 100 sq. ft  
Counted as living area: Yes

Heated: Yes  
Finished: Yes  
Enclosed: Yes  
Contiguous: Yes  
Permitted: Yes  
Wet space: No  
Addition: No  
Conversion: No

# 212 Sheldon Road, Portland, United Counties of Leeds and Grenville, Ontario, Canada, K0G 1V0

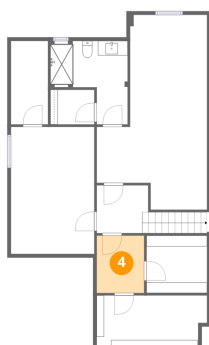
## 3 Floor 1 - Storage



Dimensions: 5'1" x 11'5"  
Area: 58 sq. ft  
Counted as living area: No

Heated: No  
Finished: No  
Enclosed: No  
Contiguous: Yes  
Permitted: Yes  
Wet space: No  
Addition: No  
Conversion: No

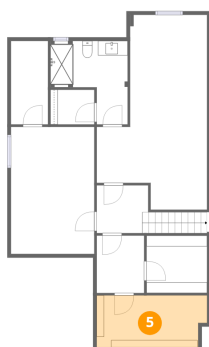
## 4 Floor 1 - Hall



Dimensions: 6'6" x 7'10"  
Area: 51 sq. ft  
Counted as living area: No

Heated: Yes  
Finished: No  
Enclosed: Yes  
Contiguous: Yes  
Permitted: Yes  
Wet space: No  
Addition: No  
Conversion: No

## 5 Floor 1 - Storage

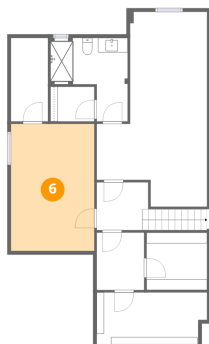


Dimensions: 15'2" x 7'1"  
Area: 104 sq. ft  
Counted as living area: No

Heated: No  
Finished: No  
Enclosed: No  
Contiguous: Yes  
Permitted: Yes  
Wet space: No  
Addition: No  
Conversion: No

# 212 Sheldon Road, Portland, United Counties of Leeds and Grenville, Ontario, Canada, K0G 1V0

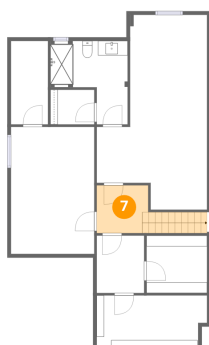
## 6 Floor 1 - Exercise Room



Dimensions: 11'5" x 17'5"  
Area: 199 sq. ft  
Counted as living area: No

Heated: Yes  
Finished: No  
Enclosed: Yes  
Contiguous: Yes  
Permitted: Yes  
Wet space: No  
Addition: No  
Conversion: No

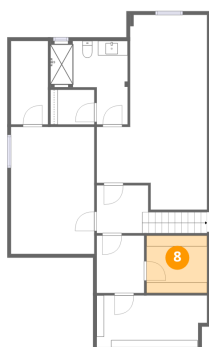
## 7 Floor 1 - Hall



Dimensions: 15'2" x 6'7"  
Area: 70 sq. ft  
Counted as living area: Yes

Heated: Yes  
Finished: Yes  
Enclosed: Yes  
Contiguous: Yes  
Permitted: Yes  
Wet space: No  
Addition: No  
Conversion: No

## 8 Floor 1 - Room

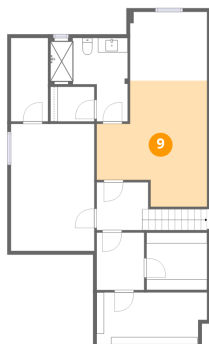


Dimensions: 8'4" x 7'10"  
Area: 65 sq. ft  
Counted as living area: No

Heated: Yes  
Finished: No  
Enclosed: Yes  
Contiguous: Yes  
Permitted: Yes  
Wet space: No  
Addition: No  
Conversion: No

# 212 Sheldon Road, Portland, United Counties of Leeds and Grenville, Ontario, Canada, K0G 1V0

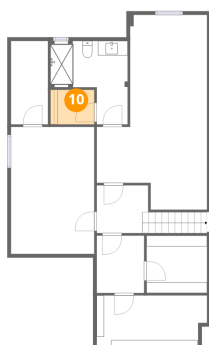
## 9 Floor 1 - Recreation Room



Dimensions: 15'2" x 17'3"  
Area: 207 sq. ft  
Counted as living area: Yes

Heated: Yes  
Finished: Yes  
Enclosed: Yes  
Contiguous: Yes  
Permitted: Yes  
Wet space: No  
Addition: No  
Conversion: No

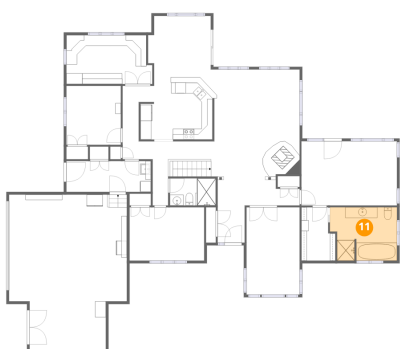
## 10 Floor 1 - W.I.C.



Dimensions: 6'0" x 4'9"  
Area: 29 sq. ft  
Counted as living area: Yes

Heated: Yes  
Finished: Yes  
Enclosed: Yes  
Contiguous: Yes  
Permitted: Yes  
Wet space: No  
Addition: No  
Conversion: No

## 11 Floor 2 - Primary Bath



Dimensions: 12'6" x 9'11"  
Area: 115 sq. ft  
Counted as living area: Yes

Heated: Yes  
Finished: Yes  
Enclosed: Yes  
Contiguous: Yes  
Permitted: Yes  
Wet space: Yes  
Addition: No  
Conversion: No

# 212 Sheldon Road, Portland, United Counties of Leeds and Grenville, Ontario, Canada, K0G 1V0

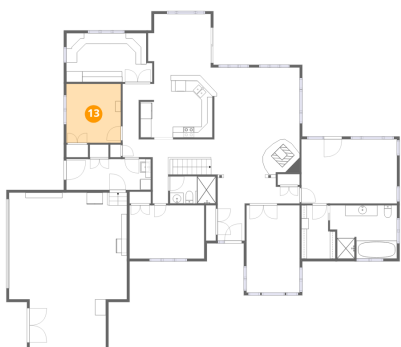
## 12 Floor 2 - Office



Dimensions: 16'0" x 9'1"  
Area: 140 sq. ft  
Counted as living area: Yes

Heated: Yes  
Finished: Yes  
Enclosed: Yes  
Contiguous: Yes  
Permitted: Yes  
Wet space: No  
Addition: No  
Conversion: No

## 13 Floor 2 - Bedroom



Dimensions: 10'2" x 11'0"  
Area: 111 sq. ft  
Counted as living area: Yes

Heated: Yes  
Finished: Yes  
Enclosed: Yes  
Contiguous: Yes  
Permitted: Yes  
Wet space: No  
Addition: No  
Conversion: No

## 14 Floor 2 - Primary Bedroom



Dimensions: 17'10" x 11'11"  
Area: 213 sq. ft  
Counted as living area: Yes

Heated: Yes  
Finished: Yes  
Enclosed: Yes  
Contiguous: Yes  
Permitted: Yes  
Wet space: No  
Addition: No  
Conversion: No

# 212 Sheldon Road, Portland, United Counties of Leeds and Grenville, Ontario, Canada, K0G 1V0

## 15 Floor 2 - Breakfast Nook



Dimensions: 11'8" x 10'0"  
Area: 111 sq. ft  
Counted as living area: Yes

Heated: Yes  
Finished: Yes  
Enclosed: Yes  
Contiguous: Yes  
Permitted: Yes  
Wet space: No  
Addition: No  
Conversion: No

## 16 Floor 2 - Laundry



Dimensions: 15'8" x 5'9"  
Area: 90 sq. ft  
Counted as living area: Yes

Heated: Yes  
Finished: Yes  
Enclosed: Yes  
Contiguous: Yes  
Permitted: Yes  
Wet space: No  
Addition: No  
Conversion: No

## 17 Floor 2 - Bedroom



Dimensions: 13'11" x 9'11"  
Area: 138 sq. ft  
Counted as living area: Yes

Heated: Yes  
Finished: Yes  
Enclosed: Yes  
Contiguous: Yes  
Permitted: Yes  
Wet space: No  
Addition: No  
Conversion: No

# 212 Sheldon Road, Portland, United Counties of Leeds and Grenville, Ontario, Canada, K0G 1V0

## 18 Floor 2 - W.I.C.



Dimensions: 6'4" x 9'11"  
Area: 56 sq. ft  
Counted as living area: Yes

Heated: Yes  
Finished: Yes  
Enclosed: Yes  
Contiguous: Yes  
Permitted: Yes  
Wet space: No  
Addition: No  
Conversion: No

## 19 Floor 2 - Living Room



Dimensions: 15'11" x 20'3"  
Area: 318 sq. ft  
Counted as living area: Yes

Heated: Yes  
Finished: Yes  
Enclosed: Yes  
Contiguous: Yes  
Permitted: Yes  
Wet space: No  
Addition: No  
Conversion: No

## 20 Floor 2 - Hall



Dimensions: 15'3" x 5'1"  
Area: 69 sq. ft  
Counted as living area: Yes

Heated: Yes  
Finished: Yes  
Enclosed: Yes  
Contiguous: Yes  
Permitted: Yes  
Wet space: No  
Addition: No  
Conversion: No

# 212 Sheldon Road, Portland, United Counties of Leeds and Grenville, Ontario, Canada, K0G 1V0

## 21 Floor 2 - Foyer



Dimensions: 5'1" x 6'11"  
Area: 35 sq. ft  
Counted as living area: Yes

Heated: Yes  
Finished: Yes  
Enclosed: Yes  
Contiguous: Yes  
Permitted: Yes  
Wet space: No  
Addition: No  
Conversion: No

## 22 Floor 2 - Kitchen



Dimensions: 14'1" x 13'1"  
Area: 169 sq. ft  
Counted as living area: Yes

Heated: Yes  
Finished: Yes  
Enclosed: Yes  
Contiguous: Yes  
Permitted: Yes  
Wet space: No  
Addition: No  
Conversion: No

## 23 Floor 2 - Dining Room



Dimensions: 9'11" x 16'3"  
Area: 161 sq. ft  
Counted as living area: Yes

Heated: Yes  
Finished: Yes  
Enclosed: Yes  
Contiguous: Yes  
Permitted: Yes  
Wet space: No  
Addition: No  
Conversion: No

# 212 Sheldon Road, Portland, United Counties of Leeds and Grenville, Ontario, Canada, K0G 1V0

## 24 Floor 2 - Hall



Dimensions: 2'11" x 5'3"  
Area: 15 sq. ft  
Counted as living area: Yes

Heated: Yes  
Finished: Yes  
Enclosed: Yes  
Contiguous: Yes  
Permitted: Yes  
Wet space: No  
Addition: No  
Conversion: No

## 25 Floor 2 - Garage



Dimensions: 22'0" x 29'0"  
Area: 566 sq. ft  
Counted as living area: No

Heated: No  
Finished: No  
Enclosed: Yes  
Contiguous: Yes  
Permitted: Yes  
Wet space: No  
Addition: No  
Conversion: No

## 26 Floor 2 - Hall

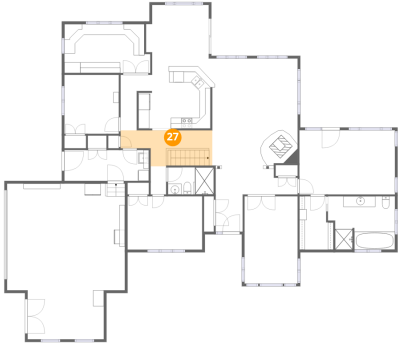


Dimensions: 3'0" x 10'4"  
Area: 31 sq. ft  
Counted as living area: Yes

Heated: Yes  
Finished: Yes  
Enclosed: Yes  
Contiguous: Yes  
Permitted: Yes  
Wet space: No  
Addition: No  
Conversion: No

# 212 Sheldon Road, Portland, United Counties of Leeds and Grenville, Ontario, Canada, K0G 1V0

## 27 Floor 2 - Hall



Dimensions: 17'1" x 6'8"  
Area: 94 sq. ft  
Counted as living area: Yes

Heated: Yes  
Finished: Yes  
Enclosed: Yes  
Contiguous: Yes  
Permitted: Yes  
Wet space: No  
Addition: No  
Conversion: No

## 28 Floor 2 - Bath



Dimensions: 8'7" x 5'1"  
Area: 43 sq. ft  
Counted as living area: Yes

Heated: Yes  
Finished: Yes  
Enclosed: Yes  
Contiguous: Yes  
Permitted: Yes  
Wet space: Yes  
Addition: No  
Conversion: No