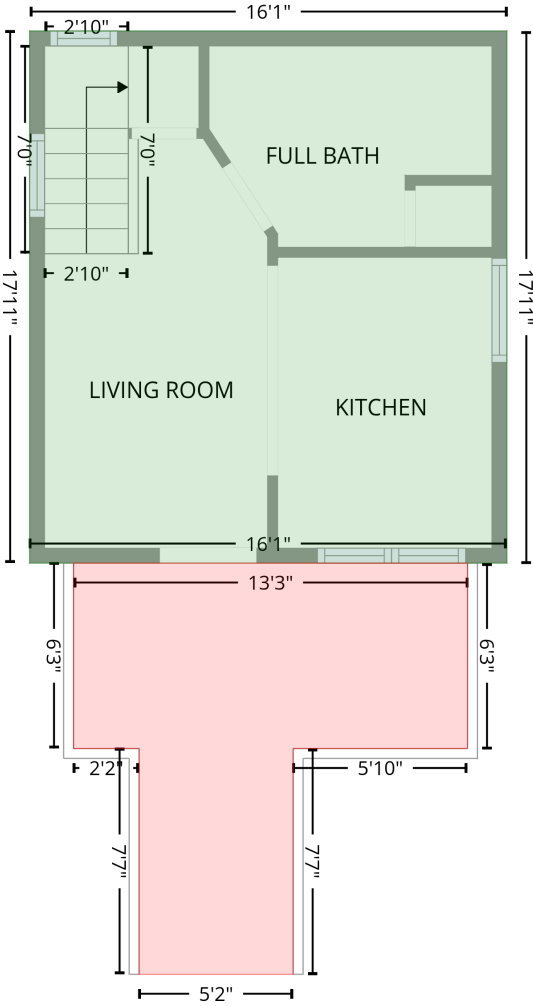


636 Beechwood Drive, Bracey, Mecklenburg County, Virginia, United States, 23919

Gross Living Area: 576 sq. ft

Level 1

1st floor
[AREA: 288]



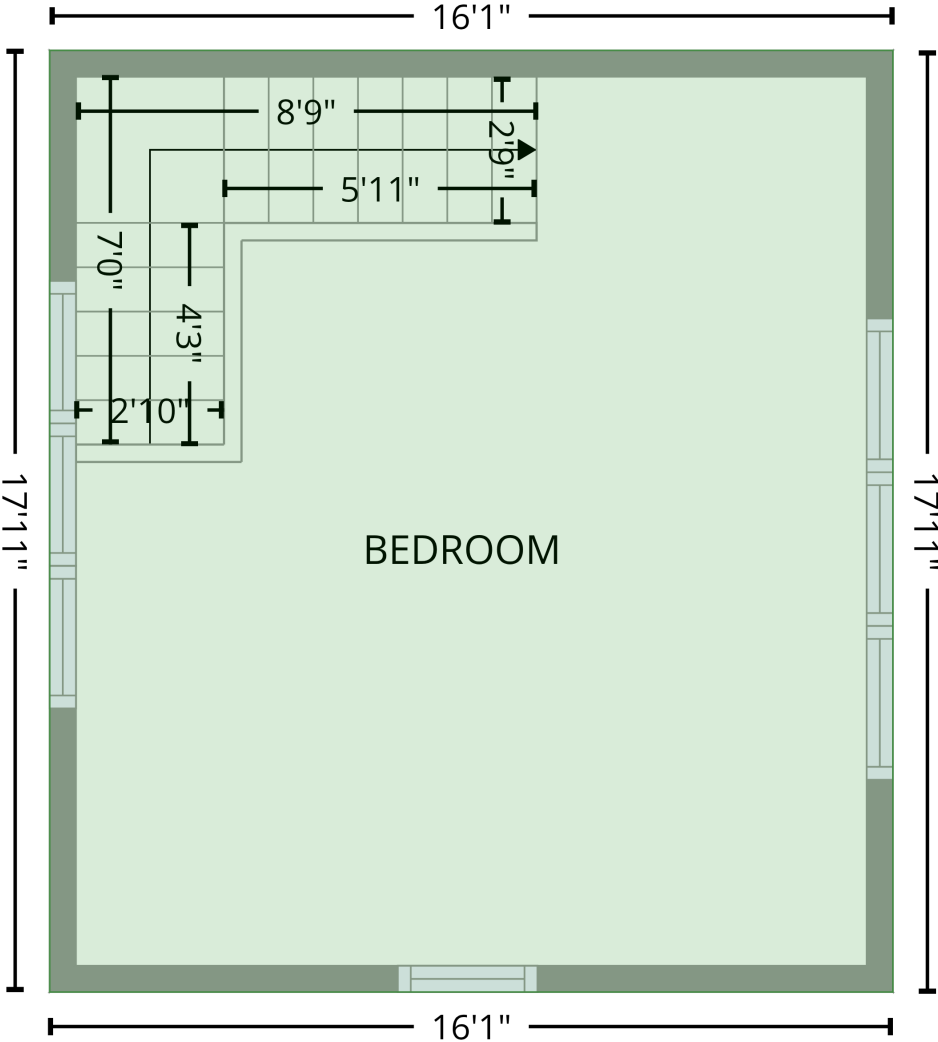
PORCH (1)
[AREA: 122]

| Space | Area (sq. ft) | Calculation <small>Coordinate Polygon Area Algorithm using inches</small> |
|----------------------------|---------------|---|
| 1st floor (Living area) | 288 | $-\left((283.9 + 283.9) * (14.4 - 229.5) + (283.9 + 91.3) * (229.5 - 229.5) + (91.3 + 91.3) * (229.5 - 14.4) + (91.3 + 283.9) * (14.4 - 14.4)\right) * 0.5 * 0.00694$ |
| PORCH (Non-living area) | 122 | $-\left((268 + 268) * (229.5 - 304.4) + (268 + 197.7) * (304.4 - 304.4) + (197.7 + 197.7) * (304.4 - 395.7) + (197.7 + 135.5) * (395.7 - 395.7) + (135.5 + 135.5) * (395.7 - 304.4) + (135.5 + 109) * (304.4 - 304.4) + (109 + 109) * (304.4 - 229.5) + (109 + 268) * (229.5 - 229.5)\right) * 0.5 * 0.00694$ |

Gross Living Area: 576 sq. ft

Level 2

2nd floor
[AREA: 288]



| Space | Area (sq. ft) | Calculation <small>Coordinate Polygon Area Algorithm using inches</small> |
|----------------------------|---------------|--|
| 2nd floor (Living area) | 288 | $-((283.9 + 283.9) * (14.4 - 229.5) + (283.9 + 91.3) * (229.5 - 229.5) + (91.3 + 91.3) * (229.5 - 14.4) + (91.3 + 283.9) * (14.4 - 14.4)) * 0.5 * 0.00694$ |