

# Home data report

## 2065 Scarecrow Rd, Fort Collins, CO, US




**Total Area: 1497 sq. ft**

1st Floor: 699 sq. ft, 2nd Floor: 798 sq. ft

Excluded: Garage 490 sq. ft, Storage 26 sq. ft, Embedded window 13 sq. ft, Walls: 140 sq. ft

### Property summary

 **2** Floors

 **3** Bedrooms

 **2** Bathrooms

Home data report

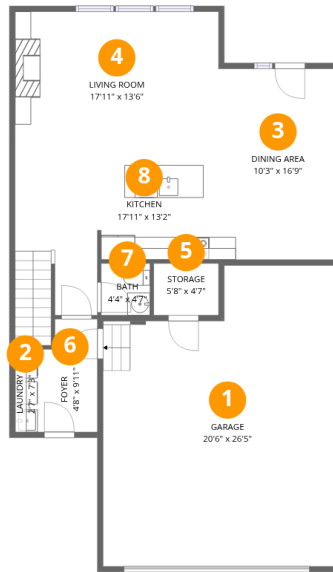
## 2065 Scarecrow Rd, Fort Collins, CO, US

 **1**  
Half baths

 **1**  
Garages

# Home data report

## 2065 Scarecrow Rd, Fort Collins, CO, US



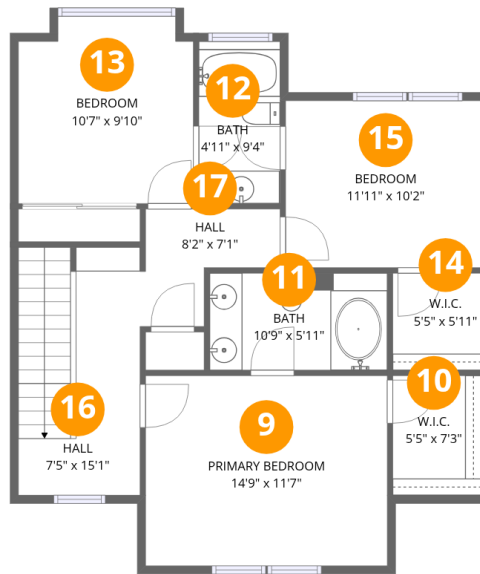
### Room dimensions

Floor 1

Total: 699 sqft

Excluded: 516 sqft

#		Dimensions	sqft	Counted as living area
1	Garage	20'6" x 26'5"	541 sq. ft	No
2	Laundry	2'7" x 7'3"	19 sq. ft	Yes
3	Dining Area	10'3" x 16'9"	173 sq. ft	Yes
4	Living Room	17'11" x 13'6"	242 sq. ft	Yes
5	Storage	5'8" x 4'7"	26 sq. ft	No
6	Foyer	4'8" x 9'11"	46 sq. ft	Yes
7	Bath	4'4" x 4'7"	20 sq. ft	Yes
8	Kitchen	17'11" x 13'2"	236 sq. ft	Yes



## Room dimensions

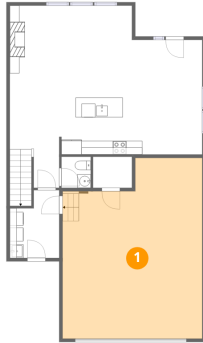
Floor 2

Total: 798sqft Excluded: 13sqft

#		Dimensions	sqft	Counted as living area
9	Primary Bedroom	14'9" x 11'7"	170 sq. ft	Yes
10	W.I.C.	5'5" x 7'3"	39 sq. ft	Yes
11	Bath	10'9" x 5'11"	64 sq. ft	Yes
12	Bath	4'11" x 9'4"	46 sq. ft	Yes
13	Bedroom	10'7" x 9'10"	105 sq. ft	Yes
14	W.I.C.	5'5" x 5'11"	32 sq. ft	Yes
15	Bedroom	11'11" x 10'2"	121 sq. ft	Yes
16	Hall	7'5" x 15'1"	112 sq. ft	Yes
17	Hall	8'2" x 7'1"	58 sq. ft	Yes

## 1 Floor 1 - Garage

---

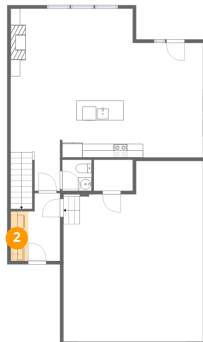


Dimensions: 20'6" x 26'5"  
Area: 541 sq. ft  
Counted as living area: No

Heated: No  
Finished: No  
Enclosed: Yes  
Contiguous: Yes  
Permitted: Yes  
Wet space: No  
Addition: No  
Conversion: No

## 2 Floor 1 - Laundry

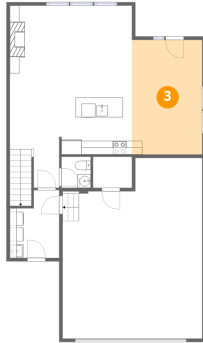
---



Dimensions: 2'7" x 7'3"  
Area: 19 sq. ft  
Counted as living area: Yes

Heated: Yes  
Finished: Yes  
Enclosed: Yes  
Contiguous: Yes  
Permitted: Yes  
Wet space: No  
Addition: No  
Conversion: No

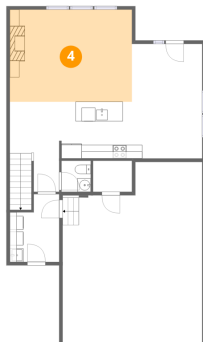
### 3 Floor 1 - Dining Area



Dimensions: 10'3" x 16'9"  
Area: 173 sq. ft  
Counted as living area: Yes

Heated: Yes  
Finished: Yes  
Enclosed: Yes  
Contiguous: Yes  
Permitted: Yes  
Wet space: No  
Addition: No  
Conversion: No

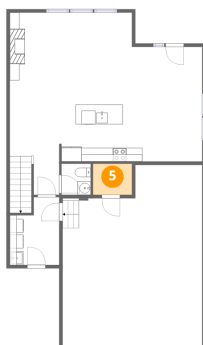
### 4 Floor 1 - Living Room



Dimensions: 17'11" x 13'6"  
Area: 242 sq. ft  
Counted as living area: Yes

Heated: Yes  
Finished: Yes  
Enclosed: Yes  
Contiguous: Yes  
Permitted: Yes  
Wet space: No  
Addition: No  
Conversion: No

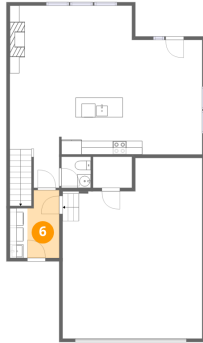
### 5 Floor 1 - Storage



Dimensions: 5'8" x 4'7"  
Area: 26 sq. ft  
Counted as living area: No

Heated: No  
Finished: No  
Enclosed: No  
Contiguous: Yes  
Permitted: Yes  
Wet space: No  
Addition: No  
Conversion: No

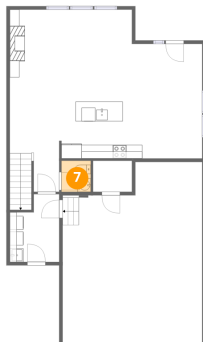
## 6 Floor 1 - Foyer



Dimensions: 4'8" x 9'11"  
Area: 46 sq. ft  
Counted as living area: Yes

Heated: Yes  
Finished: Yes  
Enclosed: Yes  
Contiguous: Yes  
Permitted: Yes  
Wet space: No  
Addition: No  
Conversion: No

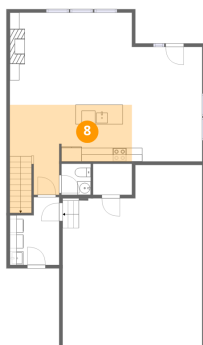
## 7 Floor 1 - Bath



Dimensions: 4'4" x 4'7"  
Area: 20 sq. ft  
Counted as living area: Yes

Heated: Yes  
Finished: Yes  
Enclosed: Yes  
Contiguous: Yes  
Permitted: Yes  
Wet space: Yes  
Addition: No  
Conversion: No

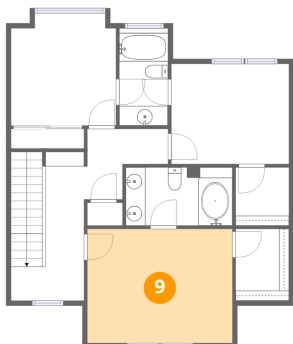
## 8 Floor 1 - Kitchen



Dimensions: 17'11" x 13'2"  
Area: 236 sq. ft  
Counted as living area: Yes

Heated: Yes  
Finished: Yes  
Enclosed: Yes  
Contiguous: Yes  
Permitted: Yes  
Wet space: No  
Addition: No  
Conversion: No

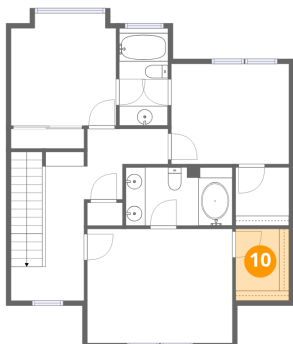
### 9 Floor 2 - Primary Bedroom



Dimensions: 14'9" x 11'7"  
Area: 170 sq. ft  
Counted as living area: Yes

Heated: Yes  
Finished: Yes  
Enclosed: Yes  
Contiguous: Yes  
Permitted: Yes  
Wet space: No  
Addition: No  
Conversion: No

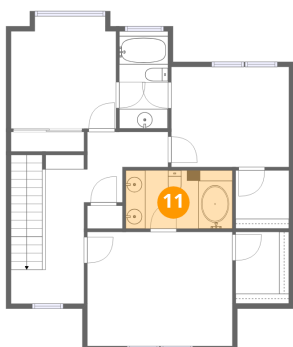
### 10 Floor 2 - W.I.C.



Dimensions: 5'5" x 7'3"  
Area: 39 sq. ft  
Counted as living area: Yes

Heated: Yes  
Finished: Yes  
Enclosed: Yes  
Contiguous: Yes  
Permitted: Yes  
Wet space: No  
Addition: No  
Conversion: No

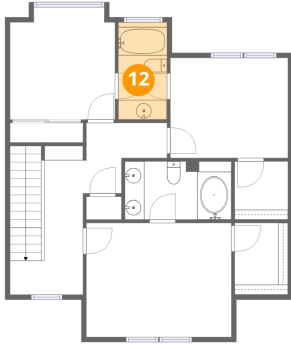
### 11 Floor 2 - Bath



Dimensions: 10'9" x 5'11"  
Area: 64 sq. ft  
Counted as living area: Yes

Heated: Yes  
Finished: Yes  
Enclosed: Yes  
Contiguous: Yes  
Permitted: Yes  
Wet space: Yes  
Addition: No  
Conversion: No

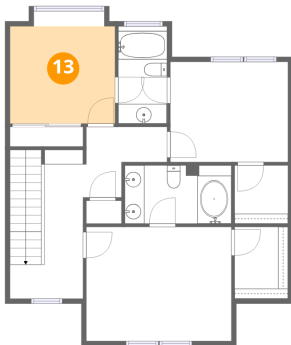
**12** Floor 2 - Bath



Dimensions: 4'11" x 9'4"  
Area: 46 sq. ft  
Counted as living area: Yes

Heated: Yes  
Finished: Yes  
Enclosed: Yes  
Contiguous: Yes  
Permitted: Yes  
Wet space: Yes  
Addition: No  
Conversion: No

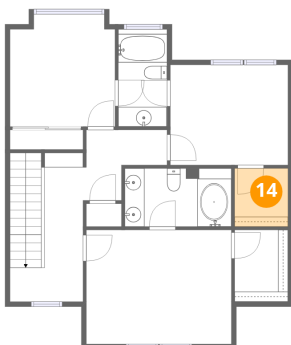
**13** Floor 2 - Bedroom



Dimensions: 10'7" x 9'10"  
Area: 105 sq. ft  
Counted as living area: Yes

Heated: Yes  
Finished: Yes  
Enclosed: Yes  
Contiguous: Yes  
Permitted: Yes  
Wet space: No  
Addition: No  
Conversion: No

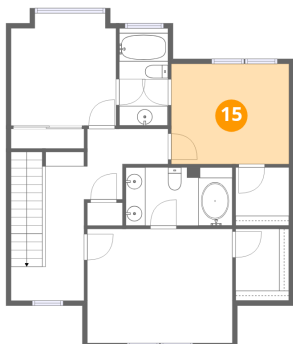
**14** Floor 2 - W.I.C.



Dimensions: 5'5" x 5'11"  
Area: 32 sq. ft  
Counted as living area: Yes

Heated: Yes  
Finished: Yes  
Enclosed: Yes  
Contiguous: Yes  
Permitted: Yes  
Wet space: No  
Addition: No  
Conversion: No

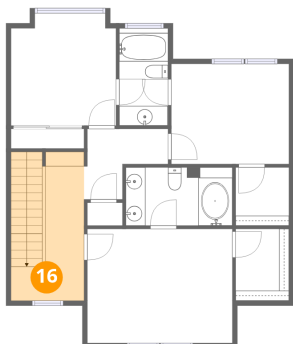
**15** Floor 2 - Bedroom



Dimensions: 11'11" x 10'2"  
Area: 121 sq. ft  
Counted as living area: Yes

Heated: Yes  
Finished: Yes  
Enclosed: Yes  
Contiguous: Yes  
Permitted: Yes  
Wet space: No  
Addition: No  
Conversion: No

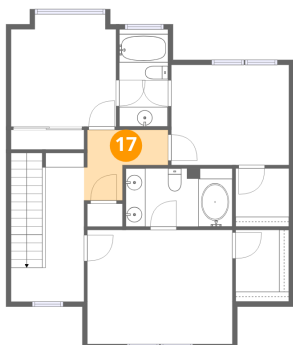
**16** Floor 2 - Hall



Dimensions: 7'5" x 15'1"  
Area: 112 sq. ft  
Counted as living area: Yes

Heated: Yes  
Finished: Yes  
Enclosed: Yes  
Contiguous: Yes  
Permitted: Yes  
Wet space: No  
Addition: No  
Conversion: No

**17** Floor 2 - Hall



Dimensions: 8'2" x 7'1"  
Area: 58 sq. ft  
Counted as living area: Yes

Heated: Yes  
Finished: Yes  
Enclosed: Yes  
Contiguous: Yes  
Permitted: Yes  
Wet space: No  
Addition: No  
Conversion: No