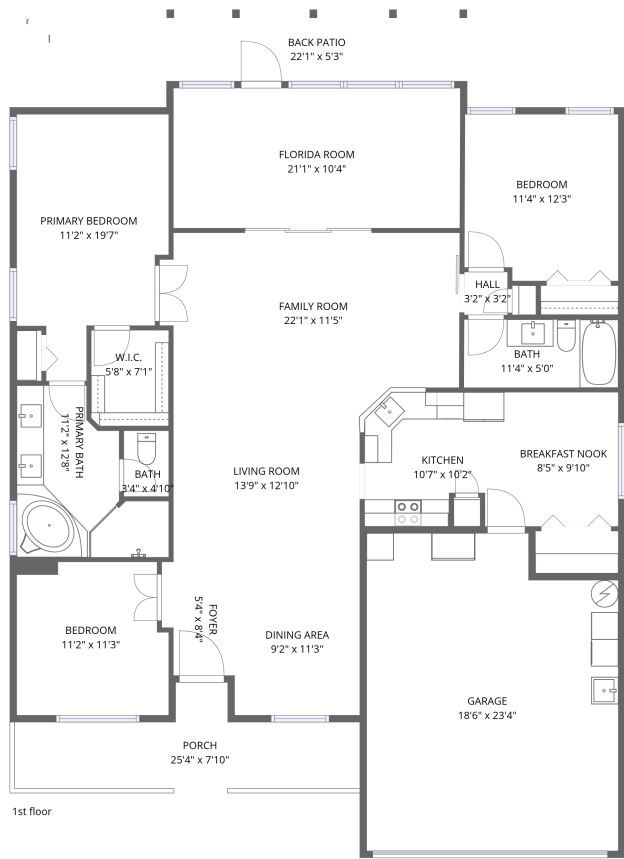


Home data report

29146 Princeville Dr, San Antonio, Pasco County, Florida, United States, 33576



**Total Area: 1737 sq. ft**

1st Floor: 1737 sq. ft

Excluded: Garage 409 sq. ft, Porch 135 sq. ft, Back patio 117 sq. ft, Walls: 123 sq. ft

Property summary

**1**  
Floors

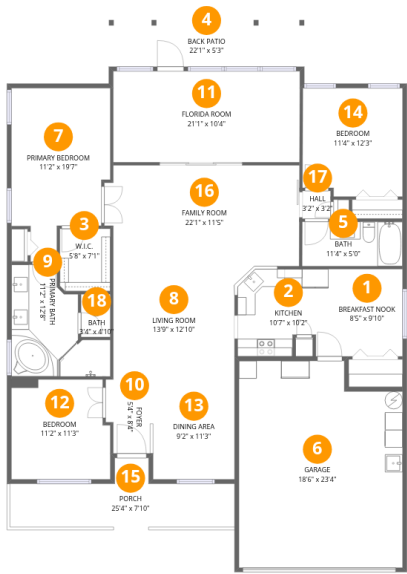
**3**  
Bedrooms

**2**  
Bathrooms

**1**  
Garages

Home data report

29146 Princeville Dr, San Antonio, Pasco County, Florida, United States, 33576



Room dimensions

Floor 1

Total:1737sqft   Excluded: 661sqft

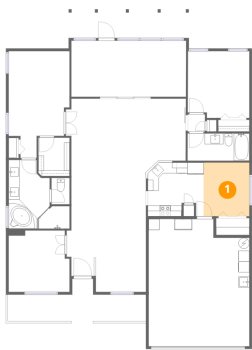
#		Dimensions	sqft	Counted as living area
1	Breakfast Nook	8'5" x 9'10"	83 sq. ft	Yes
2	Kitchen	10'7" x 10'2"	97 sq. ft	Yes
3	W.I.C.	5'8" x 7'1"	40 sq. ft	Yes
4	Back Patio	22'1" x 5'3"	117 sq. ft	No
5	Bath	11'4" x 5'0"	57 sq. ft	Yes
6	Garage	18'6" x 23'4"	409 sq. ft	No
7	Primary Bedroom	11'2" x 19'7"	181 sq. ft	Yes
8	Living Room	13'9" x 12'10"	175 sq. ft	Yes
9	Primary Bath	11'2" x 12'8"	102 sq. ft	Yes
10	Foyer	5'4" x 8'4"	42 sq. ft	Yes
11	Florida Room	21'1" x 10'4"	217 sq. ft	Yes

## Home data report

**29146 Princeville Dr, San Antonio, Pasco County, Florida, United States, 33576**

#		Dimensions	sqft	Counted as living area
12	Bedroom	11'2" x 11'3"	122 sq. ft	Yes
13	Dining Area	9'2" x 11'3"	104 sq. ft	Yes
14	Bedroom	11'4" x 12'3"	135 sq. ft	Yes
15	Porch	25'4" x 7'10"	135 sq. ft	No
16	Family Room	22'1" x 11'5"	245 sq. ft	Yes
17	Hall	3'2" x 3'2"	10 sq. ft	Yes
18	Bath	3'4" x 4'10"	16 sq. ft	Yes

1 Floor 1 - Breakfast Nook



Dimensions: 8'5" x 9'10"  
Area: 83 sq. ft  
Counted as living area: Yes

Heated: Yes  
Finished: Yes  
Enclosed: Yes  
Contiguous: Yes  
Permitted: Yes  
Wet space: No  
Addition: No  
Conversion: No

2 Floor 1 - Kitchen

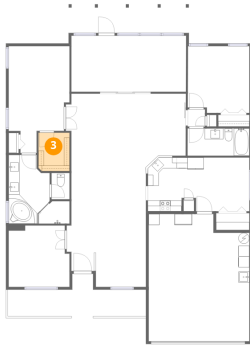


Dimensions: 10'7" x 10'2"  
Area: 97 sq. ft  
Counted as living area: Yes

Heated: Yes  
Finished: Yes  
Enclosed: Yes  
Contiguous: Yes  
Permitted: Yes  
Wet space: No  
Addition: No  
Conversion: No

29146 Princeville Dr, San Antonio, Pasco County, Florida, United States, 33576

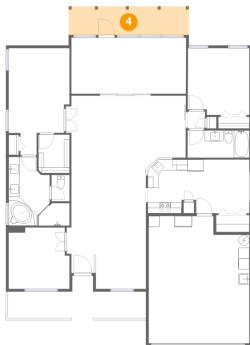
### 3 Floor 1 - W.I.C.



Dimensions: 5'8" x 7'1"  
Area: 40 sq. ft  
Counted as living area: Yes

Heated: Yes  
Finished: Yes  
Enclosed: Yes  
Contiguous: Yes  
Permitted: Yes  
Wet space: No  
Addition: No  
Conversion: No

### 4 Floor 1 - Back Patio



Dimensions: 22'1" x 5'3"  
Area: 117 sq. ft  
Counted as living area: No

Heated: No  
Finished: No  
Enclosed: No  
Contiguous: Yes  
Permitted: Yes  
Wet space: No  
Addition: No  
Conversion: No

### 5 Floor 1 - Bath

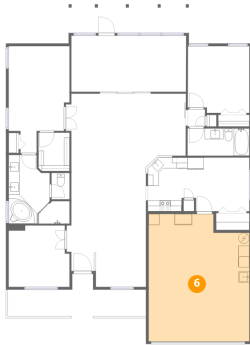


Dimensions: 11'4" x 5'0"  
Area: 57 sq. ft  
Counted as living area: Yes

Heated: Yes  
Finished: Yes  
Enclosed: Yes  
Contiguous: Yes  
Permitted: Yes  
Wet space: Yes  
Addition: No  
Conversion: No

29146 Princeville Dr, San Antonio, Pasco County, Florida, United States, 33576

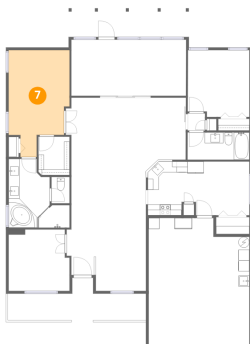
## 6 Floor 1 - Garage



Dimensions: 18'6" x 23'4"  
Area: 409 sq. ft  
Counted as living area: No

Heated: No  
Finished: No  
Enclosed: Yes  
Contiguous: Yes  
Permitted: Yes  
Wet space: No  
Addition: No  
Conversion: No

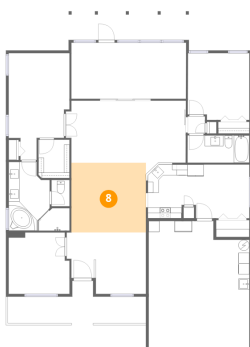
## 7 Floor 1 - Primary Bedroom



Dimensions: 11'2" x 19'7"  
Area: 181 sq. ft  
Counted as living area: Yes

Heated: Yes  
Finished: Yes  
Enclosed: Yes  
Contiguous: Yes  
Permitted: Yes  
Wet space: No  
Addition: No  
Conversion: No

## 8 Floor 1 - Living Room

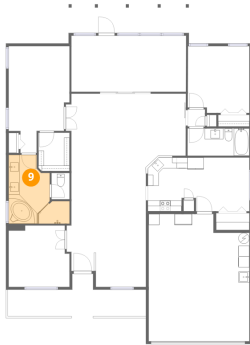


Dimensions: 13'9" x 12'10"  
Area: 175 sq. ft  
Counted as living area: Yes

Heated: Yes  
Finished: Yes  
Enclosed: Yes  
Contiguous: Yes  
Permitted: Yes  
Wet space: No  
Addition: No  
Conversion: No

29146 Princeville Dr, San Antonio, Pasco County, Florida, United States, 33576

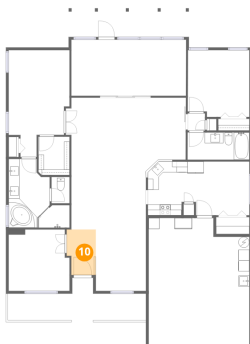
## 9 Floor 1 - Primary Bath



Dimensions: 11'2" x 12'8"  
Area: 102 sq. ft  
Counted as living area: Yes

Heated: Yes  
Finished: Yes  
Enclosed: Yes  
Contiguous: Yes  
Permitted: Yes  
Wet space: Yes  
Addition: No  
Conversion: No

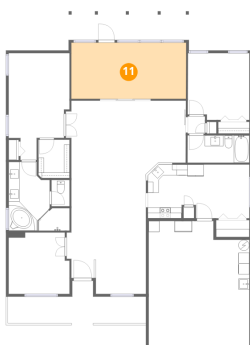
## 10 Floor 1 - Foyer



Dimensions: 5'4" x 8'4"  
Area: 42 sq. ft  
Counted as living area: Yes

Heated: Yes  
Finished: Yes  
Enclosed: Yes  
Contiguous: Yes  
Permitted: Yes  
Wet space: No  
Addition: No  
Conversion: No

## 11 Floor 1 - Florida Room

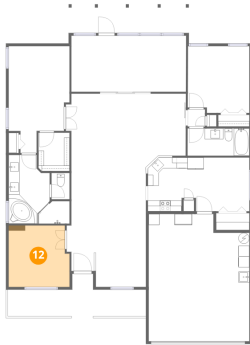


Dimensions: 21'1" x 10'4"  
Area: 217 sq. ft  
Counted as living area: Yes

Heated: Yes  
Finished: Yes  
Enclosed: Yes  
Contiguous: Yes  
Permitted: Yes  
Wet space: No  
Addition: No  
Conversion: No

29146 Princeville Dr, San Antonio, Pasco County, Florida, United States, 33576

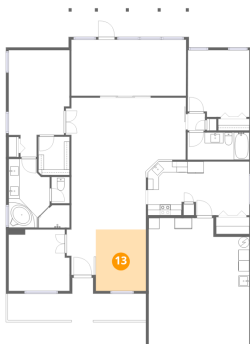
## 12 Floor 1 - Bedroom



Dimensions: 11'2" x 11'3"  
Area: 122 sq. ft  
Counted as living area: Yes

Heated: Yes  
Finished: Yes  
Enclosed: Yes  
Contiguous: Yes  
Permitted: Yes  
Wet space: No  
Addition: No  
Conversion: No

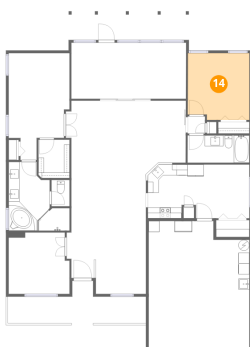
## 13 Floor 1 - Dining Area



Dimensions: 9'2" x 11'3"  
Area: 104 sq. ft  
Counted as living area: Yes

Heated: Yes  
Finished: Yes  
Enclosed: Yes  
Contiguous: Yes  
Permitted: Yes  
Wet space: No  
Addition: No  
Conversion: No

## 14 Floor 1 - Bedroom



Dimensions: 11'4" x 12'3"  
Area: 135 sq. ft  
Counted as living area: Yes

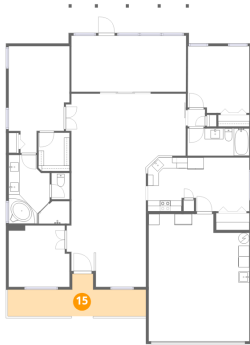
Heated: Yes  
Finished: Yes  
Enclosed: Yes  
Contiguous: Yes  
Permitted: Yes  
Wet space: No  
Addition: No  
Conversion: No



## Home data report

29146 Princeville Dr, San Antonio, Pasco County, Florida, United States, 33576

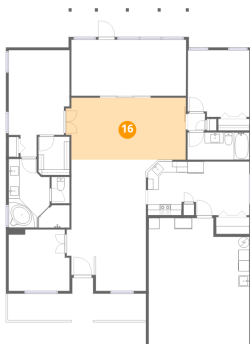
### 15 Floor 1 - Porch



Dimensions: 25'4" x 7'10"  
Area: 135 sq. ft  
Counted as living area: No

Heated: No  
Finished: No  
Enclosed: No  
Contiguous: Yes  
Permitted: Yes  
Wet space: No  
Addition: No  
Conversion: No

### 16 Floor 1 - Family Room



Dimensions: 22'1" x 11'5"  
Area: 245 sq. ft  
Counted as living area: Yes

Heated: Yes  
Finished: Yes  
Enclosed: Yes  
Contiguous: Yes  
Permitted: Yes  
Wet space: No  
Addition: No  
Conversion: No

### 17 Floor 1 - Hall

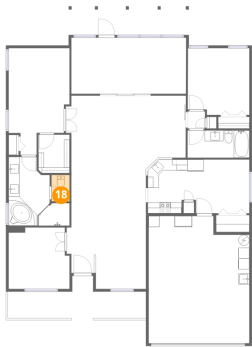


Dimensions: 3'2" x 3'2"  
Area: 10 sq. ft  
Counted as living area: Yes

Heated: Yes  
Finished: Yes  
Enclosed: Yes  
Contiguous: Yes  
Permitted: Yes  
Wet space: No  
Addition: No  
Conversion: No

29146 Princeville Dr, San Antonio, Pasco County, Florida, United States, 33576

18 Floor 1 - Bath



Dimensions: 3'4" x 4'10"  
Area: 16 sq. ft  
Counted as living area: Yes

Heated: Yes  
Finished: Yes  
Enclosed: Yes  
Contiguous: Yes  
Permitted: Yes  
Wet space: No  
Addition: No  
Conversion: No