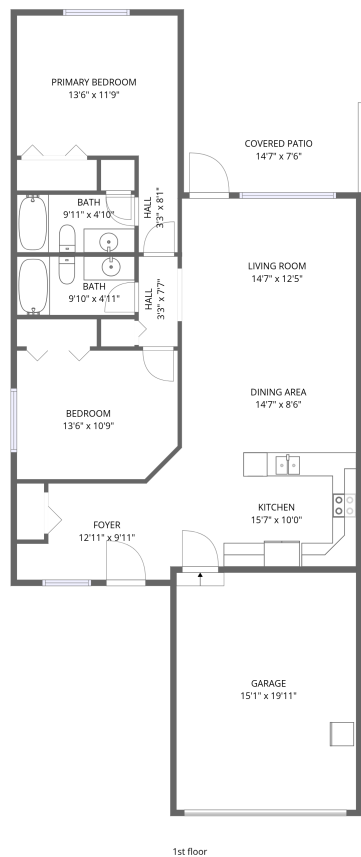


Home data report

4626 Maitland Street, Port Alberni, Alberni-Clayoquot, British Columbia, Canada, V9Y 7R3




Total Area: 1100 sq. ft


1st Floor: 1100 sq. ft

Excluded: Garage 300 sq. ft, Covered patio 110 sq. ft, Walls: 104 sq. ft

Property summary

 1 Floors

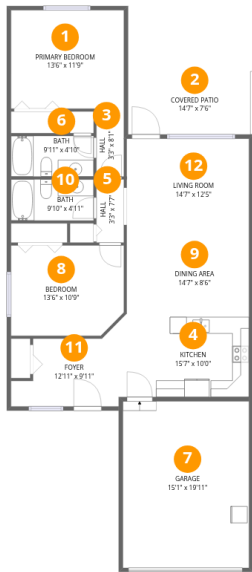
 2 Bedrooms

 2 Bathrooms

 1 Garages

Home data report

4626 Maitland Street, Port Alberni, Alberni-Clayoquot, British Columbia, Canada, V9Y 7R3



Room dimensions

Floor 1

Total:1100sqft   Excluded: 410sqft

#		Dimensions	sqft	Counted as living area
1	Primary Bedroom	13'6" x 11'9"	159 sq. ft	Yes
2	Covered Patio	14'7" x 7'6"	110 sq. ft	No
3	Hall	3'3" x 8'1"	27 sq. ft	Yes
4	Kitchen	15'7" x 10'0"	155 sq. ft	Yes
5	Hall	3'3" x 7'7"	25 sq. ft	Yes
6	Bath	9'11" x 4'10"	48 sq. ft	Yes
7	Garage	15'1" x 19'11"	300 sq. ft	No
8	Bedroom	13'6" x 10'9"	142 sq. ft	Yes
9	Dining Area	14'7" x 8'6"	124 sq. ft	Yes
10	Bath	9'10" x 4'11"	49 sq. ft	Yes
11	Foyer	12'11" x 9'11"	93 sq. ft	Yes

Home data report

4626 Maitland Street, Port Alberni, Alberni-Clayoquot, British Columbia, Canada, V9Y 7R3

#		Dimensions	sqft	Counted as living area
12	Living Room	14'7" x 12'5"	182 sq. ft	Yes

4626 Maitland Street, Port Alberni, Alberni-Clayoquot, British Columbia, Canada, V9Y 7R3

1 Floor 1 - Primary Bedroom



Dimensions: 13'6" x 11'9"  
Area: 159 sq. ft  
Counted as living area: Yes

Heated: Yes  
Finished: Yes  
Enclosed: Yes  
Contiguous: Yes  
Permitted: Yes  
Wet space: No  
Addition: No  
Conversion: No

2 Floor 1 - Covered Patio



Dimensions: 14'7" x 7'6"  
Area: 110 sq. ft  
Counted as living area: No

Heated: No  
Finished: No  
Enclosed: No  
Contiguous: Yes  
Permitted: Yes  
Wet space: No  
Addition: No  
Conversion: No

3 Floor 1 - Hall



Dimensions: 3'3" x 8'1"  
Area: 27 sq. ft  
Counted as living area: Yes

Heated: Yes  
Finished: Yes  
Enclosed: Yes  
Contiguous: Yes  
Permitted: Yes  
Wet space: No  
Addition: No  
Conversion: No

4 Floor 1 - Kitchen



Dimensions: 15'7" x 10'0"  
Area: 155 sq. ft  
Counted as living area: Yes

Heated: Yes  
Finished: Yes  
Enclosed: Yes  
Contiguous: Yes  
Permitted: Yes  
Wet space: No  
Addition: No  
Conversion: No

5 Floor 1 - Hall



Dimensions: 3'3" x 7'7"  
Area: 25 sq. ft  
Counted as living area: Yes

Heated: Yes  
Finished: Yes  
Enclosed: Yes  
Contiguous: Yes  
Permitted: Yes  
Wet space: No  
Addition: No  
Conversion: No

4626 Maitland Street, Port Alberni, Alberni-Clayoquot, British Columbia, Canada, V9Y 7R3

6 Floor 1 - Bath



Dimensions: 9'11" x 4'10"  
Area: 48 sq. ft  
Counted as living area: Yes

Heated: Yes  
Finished: Yes  
Enclosed: Yes  
Contiguous: Yes  
Permitted: Yes  
Wet space: Yes  
Addition: No  
Conversion: No

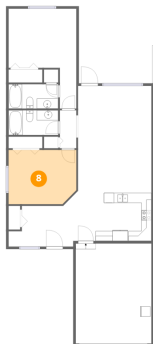
7 Floor 1 - Garage



Dimensions: 15'1" x 19'11"  
Area: 300 sq. ft  
Counted as living area: No

Heated: No  
Finished: No  
Enclosed: Yes  
Contiguous: Yes  
Permitted: Yes  
Wet space: No  
Addition: No  
Conversion: No

8 Floor 1 - Bedroom



Dimensions: 13'6" x 10'9"  
Area: 142 sq. ft  
Counted as living area: Yes

Heated: Yes  
Finished: Yes  
Enclosed: Yes  
Contiguous: Yes  
Permitted: Yes  
Wet space: No  
Addition: No  
Conversion: No

4626 Maitland Street, Port Alberni, Alberni-Clayoquot, British Columbia, Canada, V9Y 7R3

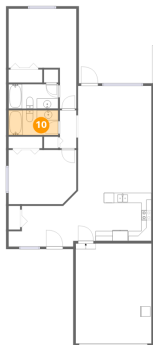
9 Floor 1 - Dining Area



Dimensions: 14'7" x 8'6"  
Area: 124 sq. ft  
Counted as living area: Yes

Heated: Yes  
Finished: Yes  
Enclosed: Yes  
Contiguous: Yes  
Permitted: Yes  
Wet space: No  
Addition: No  
Conversion: No

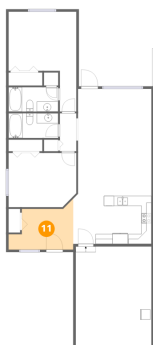
10 Floor 1 - Bath



Dimensions: 9'10" x 4'11"  
Area: 49 sq. ft  
Counted as living area: Yes

Heated: Yes  
Finished: Yes  
Enclosed: Yes  
Contiguous: Yes  
Permitted: Yes  
Wet space: Yes  
Addition: No  
Conversion: No

11 Floor 1 - Foyer



Dimensions: 12'11" x 9'11"  
Area: 93 sq. ft  
Counted as living area: Yes

Heated: Yes  
Finished: Yes  
Enclosed: Yes  
Contiguous: Yes  
Permitted: Yes  
Wet space: No  
Addition: No  
Conversion: No

4626 Maitland Street, Port Alberni, Alberni-Clayoquot, British Columbia, Canada, V9Y 7R3

**12** Floor 1 - Living Room



Dimensions: 14'7" x 12'5"  
Area: 182 sq. ft  
Counted as living area: Yes

Heated: Yes  
Finished: Yes  
Enclosed: Yes  
Contiguous: Yes  
Permitted: Yes  
Wet space: No  
Addition: No  
Conversion: No