

Home report

3536 Valentine Road Southwest, Roanoke, Virginia 24018,
United States



Total Area: 2387 sq. ft
Below Ground: 757 sq. ft, Floor 2: 1630 sq. ft
Excluded: Garage 490 sq. ft, Utility 93 sq. ft, Storage 225 sq. ft, Undefined 61 sq. ft,
Sunroom 163 sq. ft, Patio 1173 sq. ft, Porch 41 sq. ft, Shed 126 sq. ft, Walls: 262 sq. ft

Property summary

 **2** Floors

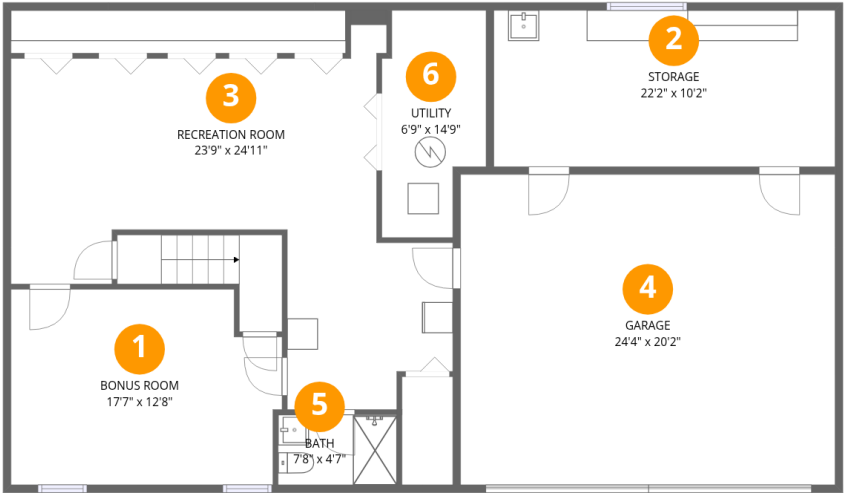
 **3** Bedrooms

 **3** Bathrooms

 **1** Garages

Home report

3536 Valentine Road Southwest, Roanoke, Virginia 24018,
United States



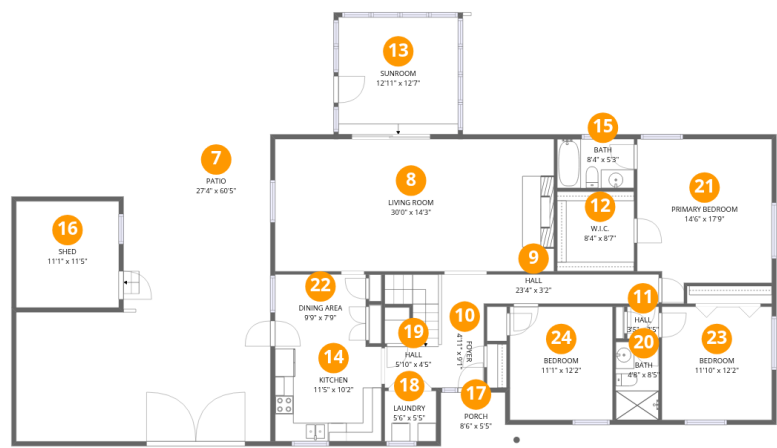
Room dimensions

Floor 1 Below ground Total:757sqft Excluded: 869sqft

#		Max Dimensions	sqft	Included
1	Bonus Room	17'7" x 12'8"	211 sq. ft	Yes
2	Storage	22'2" x 10'2"	225 sq. ft	No
3	Recreation Room	23'9" x 24'11"	406 sq. ft	Yes
4	Garage	24'4" x 20'2"	490 sq. ft	No
5	Bath	7'8" x 4'7"	35 sq. ft	Yes
6	Utility	6'9" x 14'9"	88 sq. ft	No

Home report

3536 Valentine Road Southwest, Roanoke, Virginia 24018,
United States



Room dimensions

Floor 2 Total:1630sqft Excluded: 1503sqft

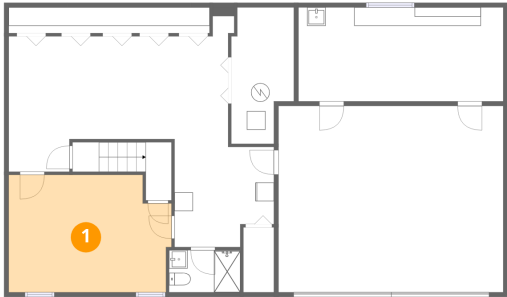
#		Max Dimensions	sqft	Included
7	Patio	27'4" x 60'5"	1173 sq. ft	No
8	Living Room	30'0" x 14'3"	428 sq. ft	Yes
9	Hall	23'4" x 3'2"	74 sq. ft	Yes
10	Foyer	4'11" x 9'1"	44 sq. ft	Yes
11	Hall	3'5" x 3'5"	12 sq. ft	Yes
12	W.I.C.	8'4" x 8'7"	72 sq. ft	Yes
13	Sunroom	12'11" x 12'7"	163 sq. ft	No
14	Kitchen	11'5" x 10'2"	117 sq. ft	Yes
15	Bath	8'4" x 5'3"	44 sq. ft	Yes
16	Shed	11'1" x 11'5"	126 sq. ft	No
17	Porch	8'6" x 5'5"	41 sq. ft	No

Home report

**3536 Valentine Road Southwest, Roanoke, Virginia 24018,
United States**

#		Max Dimensions	sqft	Included
18	Laundry	5'6" x 5'5"	30 sq. ft	Yes
19	Hall	5'10" x 4'5"	58 sq. ft	Yes
20	Bath	4'8" x 8'5"	39 sq. ft	Yes
21	Primary Bedroom	14'6" x 17'9"	226 sq. ft	Yes
22	Dining Area	9'9" x 7'9"	76 sq. ft	Yes
23	Bedroom	11'10" x 12'2"	144 sq. ft	Yes
24	Bedroom	11'1" x 12'2"	135 sq. ft	Yes

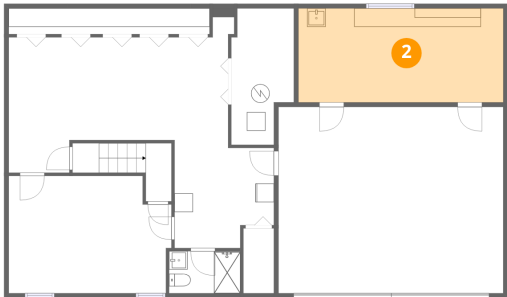
1 Floor 1 - Bonus Room



Max Dimensions: 17'7" x 12'8"
Calculated Area: 211 sq. ft
Included: Yes

Heated: Yes
Finished: Yes
Enclosed: Yes
Contiguous: Yes
Permitted: Yes
Wet space: No
Addition: No
Conversion: No

2 Floor 1 - Storage

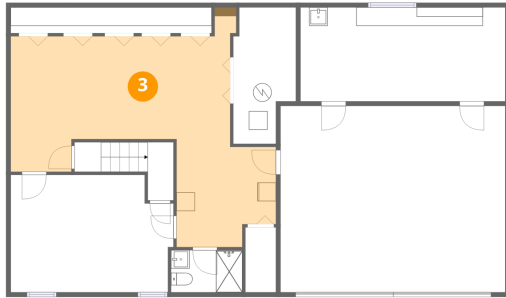


Max Dimensions: 22'2" x 10'2"
Calculated Area: 225 sq. ft
Included: No

Heated: No
Finished: No
Enclosed: No
Contiguous: Yes
Permitted: Yes
Wet space: No
Addition: No
Conversion: No

3536 Valentine Road Southwest, Roanoke, Virginia 24018,
United States

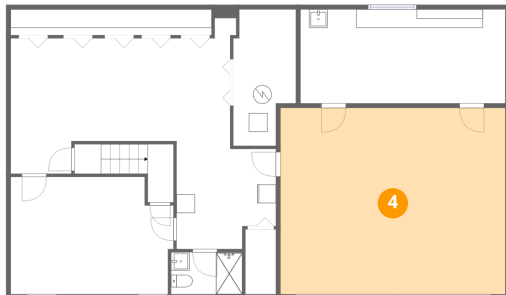
3 Floor 1 - Recreation Room



Max Dimensions: 23'9" x 24'11"
Calculated Area: 406 sq. ft
Included: Yes

Heated: Yes
Finished: Yes
Enclosed: Yes
Contiguous: Yes
Permitted: Yes
Wet space: No
Addition: No
Conversion: No

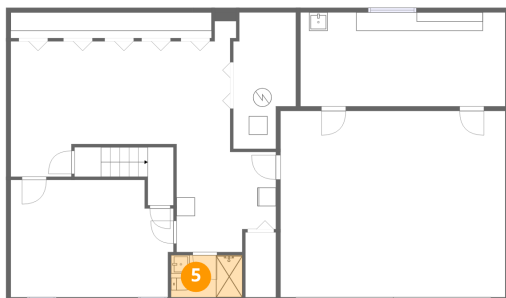
4 Floor 1 - Garage



Max Dimensions: 24'4" x 20'2"
Calculated Area: 490 sq. ft
Included: No

Heated: No
Finished: No
Enclosed: Yes
Contiguous: Yes
Permitted: Yes
Wet space: No
Addition: No
Conversion: No

5 Floor 1 - Bath

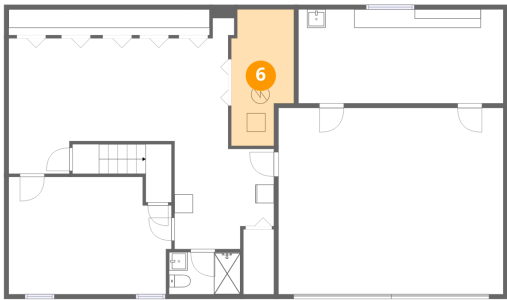


Max Dimensions: 7'8" x 4'7"
Calculated Area: 35 sq. ft
Included: Yes

Heated: Yes
Finished: Yes
Enclosed: Yes
Contiguous: Yes
Permitted: Yes
Wet space: Yes
Addition: No
Conversion: No

3536 Valentine Road Southwest, Roanoke, Virginia 24018,
United States

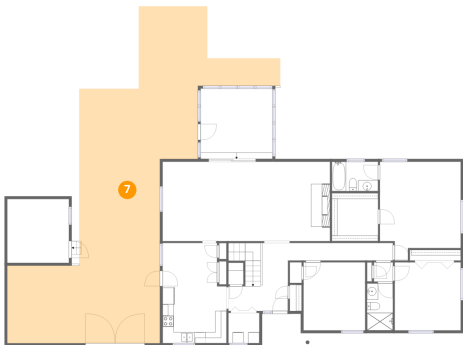
6 Floor 1 - Utility



Max Dimensions: 6'9" x 14'9"
Calculated Area: 88 sq. ft
Included: No

Heated: Yes
Finished: No
Enclosed: Yes
Contiguous: Yes
Permitted: Yes
Wet space: No
Addition: No
Conversion: No

7 Floor 2 - Patio



Max Dimensions: 27'4" x 60'5"
Calculated Area: 1173 sq. ft
Included: No

Heated: No
Finished: No
Enclosed: No
Contiguous: Yes
Permitted: Yes
Wet space: No
Addition: No
Conversion: No

8 Floor 2 - Living Room

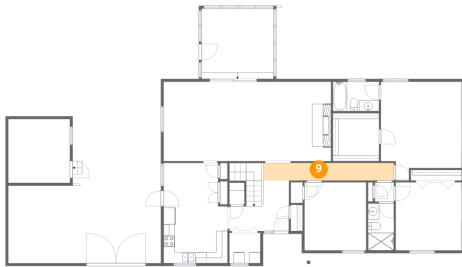


Max Dimensions: 30'0" x 14'3"
Calculated Area: 428 sq. ft
Included: Yes

Heated: Yes
Finished: Yes
Enclosed: Yes
Contiguous: Yes
Permitted: Yes
Wet space: No
Addition: No
Conversion: No

3536 Valentine Road Southwest, Roanoke, Virginia 24018,
United States

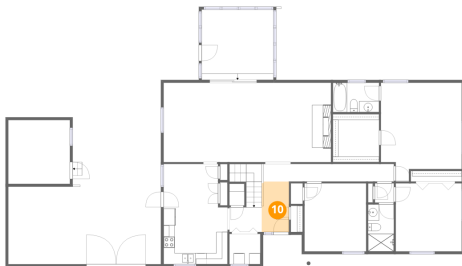
9 Floor 2 - Hall



Max Dimensions: 23'4" x 3'2"
Calculated Area: 74 sq. ft
Included: Yes

Heated: Yes
Finished: Yes
Enclosed: Yes
Contiguous: Yes
Permitted: Yes
Wet space: No
Addition: No
Conversion: No

10 Floor 2 - Foyer



Max Dimensions: 4'11" x 9'1"
Calculated Area: 44 sq. ft
Included: Yes

Heated: Yes
Finished: Yes
Enclosed: Yes
Contiguous: Yes
Permitted: Yes
Wet space: No
Addition: No
Conversion: No

11 Floor 2 - Hall

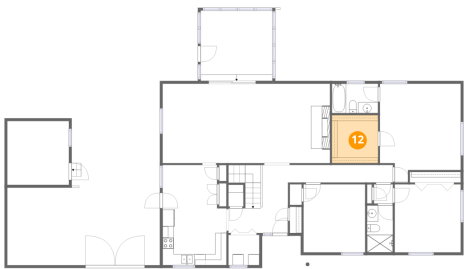


Max Dimensions: 3'5" x 3'5"
Calculated Area: 12 sq. ft
Included: Yes

Heated: Yes
Finished: Yes
Enclosed: Yes
Contiguous: Yes
Permitted: Yes
Wet space: No
Addition: No
Conversion: No

3536 Valentine Road Southwest, Roanoke, Virginia 24018,
United States

12 Floor 2 - W.I.C.



Max Dimensions: 8'4" x 8'7"
Calculated Area: 72 sq. ft
Included: Yes

Heated: Yes
Finished: Yes
Enclosed: Yes
Contiguous: Yes
Permitted: Yes
Wet space: No
Addition: No
Conversion: No

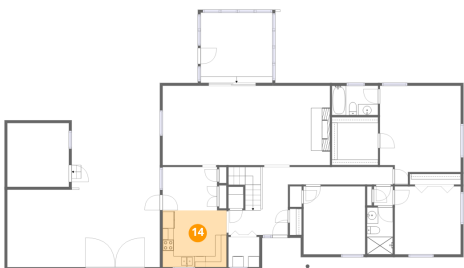
13 Floor 2 - Sunroom



Max Dimensions: 12'11" x 12'7"
Calculated Area: 163 sq. ft
Included: No

Heated: No
Finished: No
Enclosed: No
Contiguous: Yes
Permitted: Yes
Wet space: No
Addition: No
Conversion: No

14 Floor 2 - Kitchen



Max Dimensions: 11'5" x 10'2"
Calculated Area: 117 sq. ft
Included: Yes

Heated: Yes
Finished: Yes
Enclosed: Yes
Contiguous: Yes
Permitted: Yes
Wet space: No
Addition: No
Conversion: No

3536 Valentine Road Southwest, Roanoke, Virginia 24018,
United States

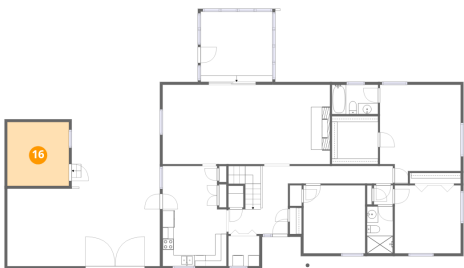
15 Floor 2 - Bath



Max Dimensions: 8'4" x 5'3"
Calculated Area: 44 sq. ft
Included: Yes

Heated: Yes
Finished: Yes
Enclosed: Yes
Contiguous: Yes
Permitted: Yes
Wet space: Yes
Addition: No
Conversion: No

16 Floor 2 - Shed



Max Dimensions: 11'1" x 11'5"
Calculated Area: 126 sq. ft
Included: No

Heated: No
Finished: No
Enclosed: No
Contiguous: Yes
Permitted: Yes
Wet space: No
Addition: No
Conversion: No

17 Floor 2 - Porch

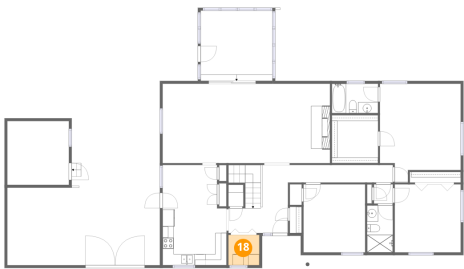


Max Dimensions: 8'6" x 5'5"
Calculated Area: 41 sq. ft
Included: No

Heated: No
Finished: No
Enclosed: No
Contiguous: Yes
Permitted: Yes
Wet space: No
Addition: No
Conversion: No

3536 Valentine Road Southwest, Roanoke, Virginia 24018,
United States

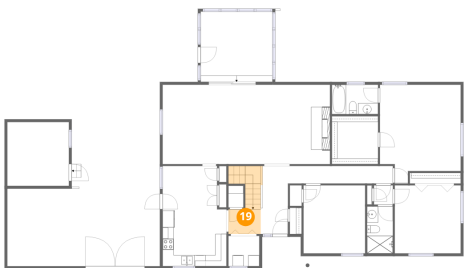
18 Floor 2 - Laundry



Max Dimensions: 5'6" x 5'5"
Calculated Area: 30 sq. ft
Included: Yes

Heated: Yes
Finished: Yes
Enclosed: Yes
Contiguous: Yes
Permitted: Yes
Wet space: No
Addition: No
Conversion: No

19 Floor 2 - Hall



Max Dimensions: 5'10" x 4'5"
Calculated Area: 58 sq. ft
Included: Yes

Heated: Yes
Finished: Yes
Enclosed: Yes
Contiguous: Yes
Permitted: Yes
Wet space: No
Addition: No
Conversion: No

20 Floor 2 - Bath



Max Dimensions: 4'8" x 8'5"
Calculated Area: 39 sq. ft
Included: Yes

Heated: Yes
Finished: Yes
Enclosed: Yes
Contiguous: Yes
Permitted: Yes
Wet space: Yes
Addition: No
Conversion: No

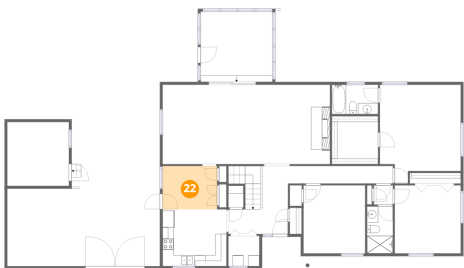
21 Floor 2 - Primary Bedroom



Max Dimensions: 14'6" x 17'9"
Calculated Area: 226 sq. ft
Included: Yes

Heated: Yes
Finished: Yes
Enclosed: Yes
Contiguous: Yes
Permitted: Yes
Wet space: No
Addition: No
Conversion: No

22 Floor 2 - Dining Area



Max Dimensions: 9'9" x 7'9"
Calculated Area: 76 sq. ft
Included: Yes

Heated: Yes
Finished: Yes
Enclosed: Yes
Contiguous: Yes
Permitted: Yes
Wet space: No
Addition: No
Conversion: No

23 Floor 2 - Bedroom



Max Dimensions: 11'10" x 12'2"
Calculated Area: 144 sq. ft
Included: Yes

Heated: Yes
Finished: Yes
Enclosed: Yes
Contiguous: Yes
Permitted: Yes
Wet space: No
Addition: No
Conversion: No

3536 Valentine Road Southwest, Roanoke, Virginia 24018,
United States

24 Floor 2 - Bedroom



Max Dimensions: 11'1" x 12'2"
Calculated Area: 135 sq. ft
Included: Yes

Heated: Yes
Finished: Yes
Enclosed: Yes
Contiguous: Yes
Permitted: Yes
Wet space: No
Addition: No
Conversion: No