

Home data report

936 Alpine Rdg St,Erie,CO,US



Total Area: 2542 sq. ft

1st Floor: 1057 sq. ft, 2nd Floor: 1485 sq. ft

Excluded: Garage 422 sq. ft, Utility 32 sq. ft, Covered patio 303 sq. ft, Walls: 192 sq. ft

Property summary

 **2** Floors

 **4** Bedrooms

 **2** Bathrooms

Home data report

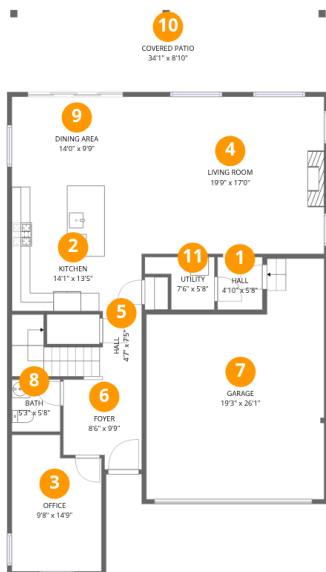
936 Alpine Rdg St,Erie,CO,US

 **1**
Half baths

 **1**
Garages

Home data report

936 Alpine Rdg St,Erie,CO,US

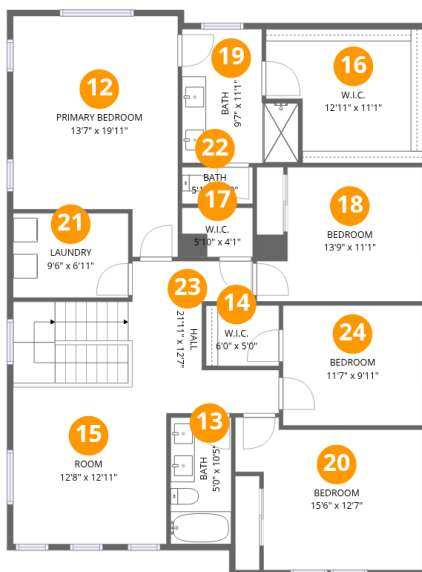


Room dimensions

Floor 1

Total:1057sqft Excluded: 757sqft

#		Dimensions	sqft	Counted as living area
1	Hall	4'10" x 5'8"	28 sq. ft	Yes
2	Kitchen	14'1" x 13'5"	189 sq. ft	Yes
3	Office	9'8" x 14'9"	143 sq. ft	Yes
4	Living Room	19'9" x 17'0"	336 sq. ft	Yes
5	Hall	4'7" x 7'5"	34 sq. ft	Yes
6	Foyer	8'6" x 9'9"	83 sq. ft	Yes
7	Garage	19'3" x 26'1"	501 sq. ft	No
8	Bath	5'3" x 5'8"	30 sq. ft	Yes
9	Dining Area	14'0" x 9'9"	137 sq. ft	Yes
10	Covered Patio	34'1" x 8'10"	302 sq. ft	No
11	Utility	7'6" x 5'8"	43 sq. ft	No



Room dimensions

Floor 2

Total:1485sqft Excluded: 0sqft

#		Dimensions	sqft	Counted as living area
12	Primary Bedroom	13'7" x 19'11"	270 sq. ft	Yes
13	Bath	5'0" x 10'5"	52 sq. ft	Yes
14	W.I.C.	6'0" x 5'0"	30 sq. ft	Yes
15	Room	12'8" x 12'11"	164 sq. ft	Yes
16	W.I.C.	12'11" x 11'1"	143 sq. ft	Yes
17	W.I.C.	5'10" x 4'1"	24 sq. ft	Yes
18	Bedroom	13'9" x 11'1"	152 sq. ft	Yes
19	Bath	9'7" x 11'1"	106 sq. ft	Yes
20	Bedroom	15'6" x 12'7"	195 sq. ft	Yes
21	Laundry	9'6" x 6'11"	66 sq. ft	Yes
22	Bath	5'10" x 3'0"	18 sq. ft	Yes

Home data report

936 Alpine Rdg St,Erie,CO,US

#		Dimensions	sqft	Counted as living area
23	Hall	21'11" x 12'7"	276 sq. ft	Yes
24	Bedroom	11'7" x 9'11"	114 sq. ft	Yes

1 Floor 1 - Hall



Dimensions: 4'10" x 5'8"
Area: 28 sq. ft
Counted as living area: Yes

Heated: Yes
Finished: Yes
Enclosed: Yes
Contiguous: Yes
Permitted: Yes
Wet space: No
Addition: No
Conversion: No

2 Floor 1 - Kitchen



Dimensions: 14'1" x 13'5"
Area: 189 sq. ft
Counted as living area: Yes

Heated: Yes
Finished: Yes
Enclosed: Yes
Contiguous: Yes
Permitted: Yes
Wet space: No
Addition: No
Conversion: No

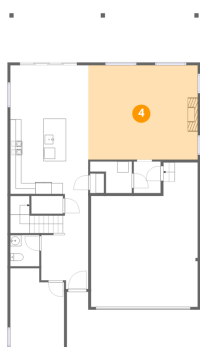
3 Floor 1 - Office



Dimensions: 9'8" x 14'9"
Area: 143 sq. ft
Counted as living area: Yes

Heated: Yes
Finished: Yes
Enclosed: Yes
Contiguous: Yes
Permitted: Yes
Wet space: No
Addition: No
Conversion: No

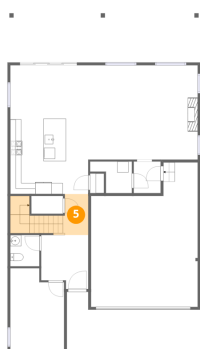
4 Floor 1 - Living Room



Dimensions: 19'9" x 17'0"
Area: 336 sq. ft
Counted as living area: Yes

Heated: Yes
Finished: Yes
Enclosed: Yes
Contiguous: Yes
Permitted: Yes
Wet space: No
Addition: No
Conversion: No

5 Floor 1 - Hall



Dimensions: 4'7" x 7'5"
Area: 34 sq. ft
Counted as living area: Yes

Heated: Yes
Finished: Yes
Enclosed: Yes
Contiguous: Yes
Permitted: Yes
Wet space: No
Addition: No
Conversion: No

6 Floor 1 - Foyer



Dimensions: 8'6" x 9'9"
Area: 83 sq. ft
Counted as living area: Yes

Heated: Yes
Finished: Yes
Enclosed: Yes
Contiguous: Yes
Permitted: Yes
Wet space: No
Addition: No
Conversion: No

7 Floor 1 - Garage



Dimensions: 19'3" x 26'1"
Area: 501 sq. ft
Counted as living area: No

Heated: No
Finished: No
Enclosed: Yes
Contiguous: Yes
Permitted: Yes
Wet space: No
Addition: No
Conversion: No

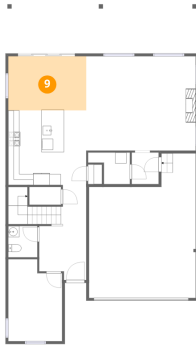
8 Floor 1 - Bath



Dimensions: 5'3" x 5'8"
Area: 30 sq. ft
Counted as living area: Yes

Heated: Yes
Finished: Yes
Enclosed: Yes
Contiguous: Yes
Permitted: Yes
Wet space: Yes
Addition: No
Conversion: No

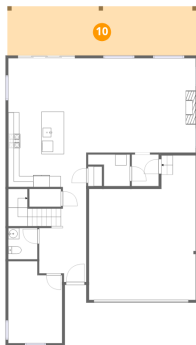
9 Floor 1 - Dining Area



Dimensions: 14'0" x 9'9"
Area: 137 sq. ft
Counted as living area: Yes

Heated: Yes
Finished: Yes
Enclosed: Yes
Contiguous: Yes
Permitted: Yes
Wet space: No
Addition: No
Conversion: No

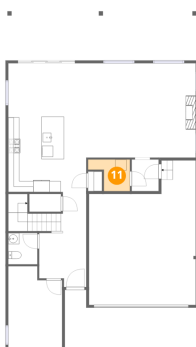
10 Floor 1 - Covered Patio



Dimensions: 34'1" x 8'10"
Area: 302 sq. ft
Counted as living area: No

Heated: No
Finished: No
Enclosed: No
Contiguous: Yes
Permitted: Yes
Wet space: No
Addition: No
Conversion: No

11 Floor 1 - Utility



Dimensions: 7'6" x 5'8"
Area: 43 sq. ft
Counted as living area: No

Heated: Yes
Finished: No
Enclosed: Yes
Contiguous: Yes
Permitted: Yes
Wet space: No
Addition: No
Conversion: No

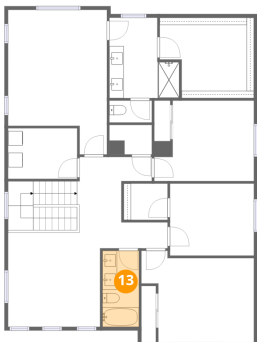
12 Floor 2 - Primary Bedroom



Dimensions: 13'7" x 19'11"
Area: 270 sq. ft
Counted as living area: Yes

Heated: Yes
Finished: Yes
Enclosed: Yes
Contiguous: Yes
Permitted: Yes
Wet space: No
Addition: No
Conversion: No

13 Floor 2 - Bath



Dimensions: 5'0" x 10'5"
Area: 52 sq. ft
Counted as living area: Yes

Heated: Yes
Finished: Yes
Enclosed: Yes
Contiguous: Yes
Permitted: Yes
Wet space: Yes
Addition: No
Conversion: No

14 Floor 2 - W.I.C.



Dimensions: 6'0" x 5'0"
Area: 30 sq. ft
Counted as living area: Yes

Heated: Yes
Finished: Yes
Enclosed: Yes
Contiguous: Yes
Permitted: Yes
Wet space: No
Addition: No
Conversion: No

15 Floor 2 - Room



Dimensions: 12'8" x 12'11"
Area: 164 sq. ft
Counted as living area: Yes

Heated: Yes
Finished: Yes
Enclosed: Yes
Contiguous: Yes
Permitted: Yes
Wet space: No
Addition: No
Conversion: No

16 Floor 2 - W.I.C.



Dimensions: 12'11" x 11'1"
Area: 143 sq. ft
Counted as living area: Yes

Heated: Yes
Finished: Yes
Enclosed: Yes
Contiguous: Yes
Permitted: Yes
Wet space: No
Addition: No
Conversion: No

17 Floor 2 - W.I.C.



Dimensions: 5'10" x 4'1"
Area: 24 sq. ft
Counted as living area: Yes

Heated: Yes
Finished: Yes
Enclosed: Yes
Contiguous: Yes
Permitted: Yes
Wet space: No
Addition: No
Conversion: No

18 Floor 2 - Bedroom



Dimensions: 13'9" x 11'1"
Area: 152 sq. ft
Counted as living area: Yes

Heated: Yes
Finished: Yes
Enclosed: Yes
Contiguous: Yes
Permitted: Yes
Wet space: No
Addition: No
Conversion: No

19 Floor 2 - Bath



Dimensions: 9'7" x 11'1"
Area: 106 sq. ft
Counted as living area: Yes

Heated: Yes
Finished: Yes
Enclosed: Yes
Contiguous: Yes
Permitted: Yes
Wet space: Yes
Addition: No
Conversion: No

20 Floor 2 - Bedroom



Dimensions: 15'6" x 12'7"
Area: 195 sq. ft
Counted as living area: Yes

Heated: Yes
Finished: Yes
Enclosed: Yes
Contiguous: Yes
Permitted: Yes
Wet space: No
Addition: No
Conversion: No

21 Floor 2 - Laundry



Dimensions: 9'6" x 6'11"
Area: 66 sq. ft
Counted as living area: Yes

Heated: Yes
Finished: Yes
Enclosed: Yes
Contiguous: Yes
Permitted: Yes
Wet space: No
Addition: No
Conversion: No

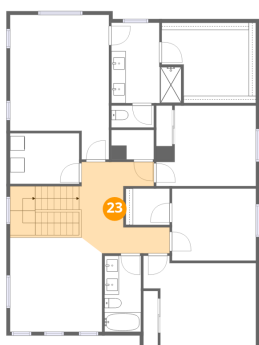
22 Floor 2 - Bath



Dimensions: 5'10" x 3'0"
Area: 18 sq. ft
Counted as living area: Yes

Heated: Yes
Finished: Yes
Enclosed: Yes
Contiguous: Yes
Permitted: Yes
Wet space: Yes
Addition: No
Conversion: No

23 Floor 2 - Hall



Dimensions: 21'11" x 12'7"
Area: 276 sq. ft
Counted as living area: Yes

Heated: Yes
Finished: Yes
Enclosed: Yes
Contiguous: Yes
Permitted: Yes
Wet space: No
Addition: No
Conversion: No

24 Floor 2 - Bedroom



Dimensions: 11'7" x 9'11"
Area: 114 sq. ft
Counted as living area: Yes

Heated: Yes
Finished: Yes
Enclosed: Yes
Contiguous: Yes
Permitted: Yes
Wet space: No
Addition: No
Conversion: No