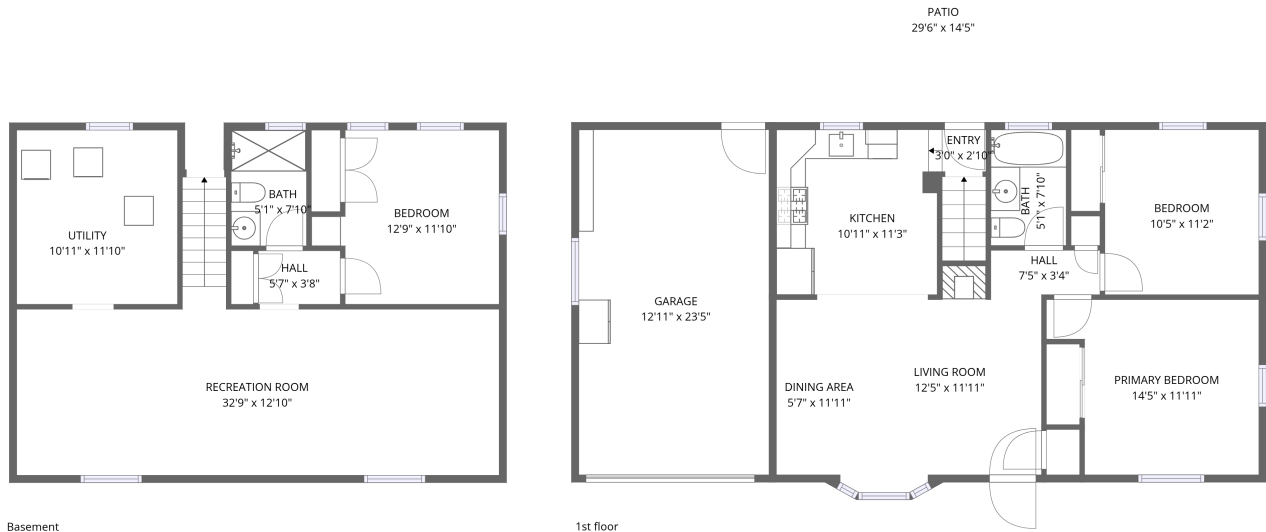


Home data report

2614 21st Avenue Court, Greeley, Weld County, Colorado, United States, 80631



Total Area: 1395 sq. ft

Basement: 627 sq. ft, 1st Floor: 768 sq. ft

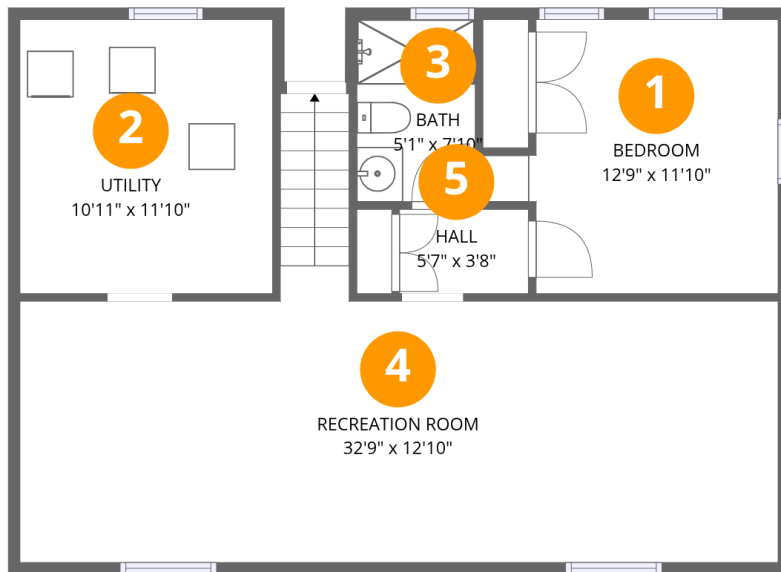
Excluded: Utility 129 sq. ft, Garage 303 sq. ft, Patio 426 sq. ft, Embedded window 7 sq. ft, Walls: 145 sq. ft

Property summary



Home data report

2614 21st Avenue Court, Greeley, Weld County, Colorado, United States, 80631



Room dimensions

Floor 1 Below grade

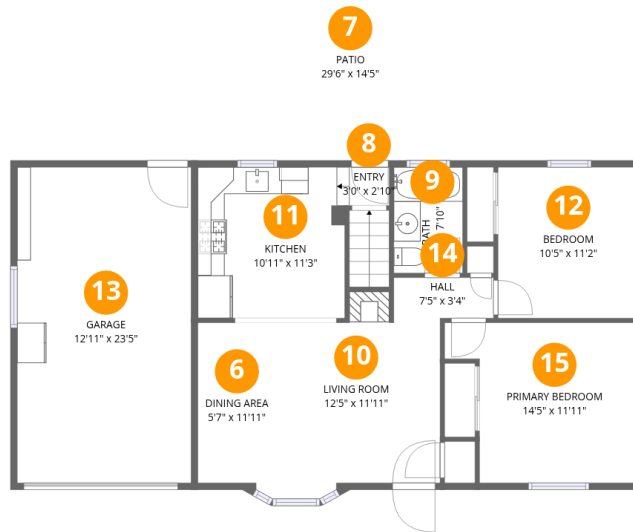
Total:627sqft

Excluded: 129sqft

#		Dimensions	sqft	Counted as living area
1	Bedroom	12'9" x 11'10"	151 sq. ft	Yes
2	Utility	10'11" x 11'10"	129 sq. ft	No
3	Bath	5'1" x 7'10"	40 sq. ft	Yes
4	Recreation Room	32'9" x 12'10"	420 sq. ft	Yes
5	Hall	5'7" x 3'8"	20 sq. ft	Yes

Home data report

2614 21st Avenue Court, Greeley, Weld County, Colorado, United States, 80631



Room dimensions

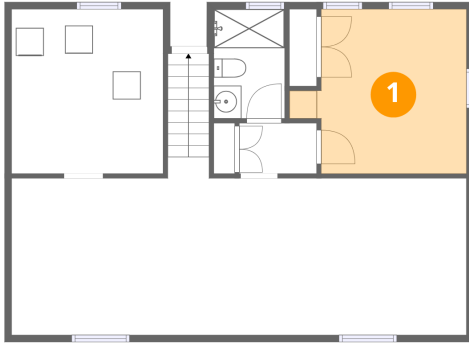
Floor 2

Total:768sqft

Excluded: 736sqft

#		Dimensions	sqft	Counted as living area
6	Dining Area	5'7" x 11'11"	67 sq. ft	Yes
7	Patio	29'6" x 14'5"	424 sq. ft	No
8	Entry	3'0" x 2'10"	8 sq. ft	Yes
9	Bath	5'1" x 7'10"	40 sq. ft	Yes
10	Living Room	12'5" x 11'11"	147 sq. ft	Yes
11	Kitchen	10'11" x 11'3"	122 sq. ft	Yes
12	Bedroom	10'5" x 11'2"	117 sq. ft	Yes
13	Garage	12'11" x 23'5"	303 sq. ft	No
14	Hall	7'5" x 3'4"	25 sq. ft	Yes
15	Primary Bedroom	14'5" x 11'11"	172 sq. ft	Yes

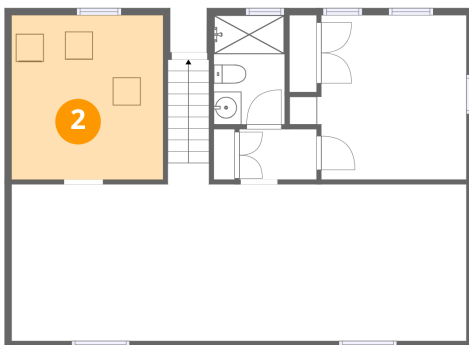
1 Floor 1 - Bedroom



Dimensions: 12'9" x 11'10"
Area: 151 sq. ft
Counted as living area: Yes

Heated: Yes
Finished: Yes
Enclosed: Yes
Contiguous: Yes
Permitted: Yes
Wet space: No
Addition: No
Conversion: No

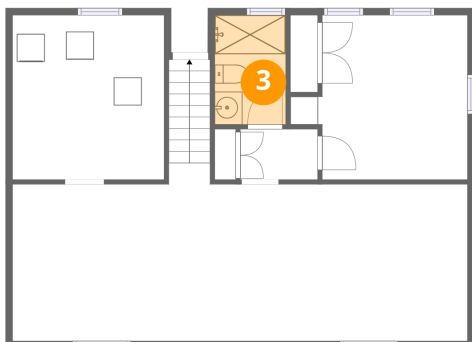
2 Floor 1 - Utility



Dimensions: 10'11" x 11'10"
Area: 129 sq. ft
Counted as living area: No

Heated: Yes
Finished: No
Enclosed: Yes
Contiguous: Yes
Permitted: Yes
Wet space: No
Addition: No
Conversion: No

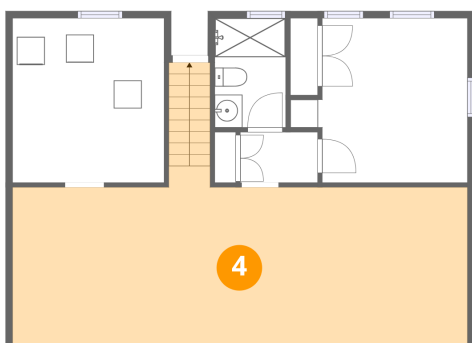
3 Floor 1 - Bath



Dimensions: 5'1" x 7'10"
Area: 40 sq. ft
Counted as living area: Yes

Heated: Yes
Finished: Yes
Enclosed: Yes
Contiguous: Yes
Permitted: Yes
Wet space: Yes
Addition: No
Conversion: No

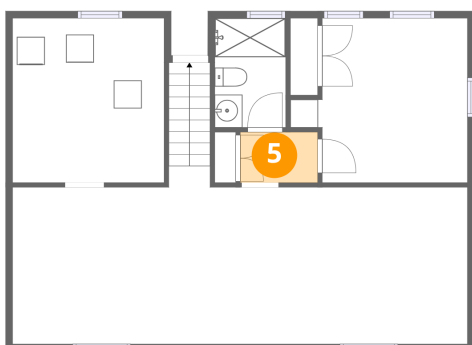
4 Floor 1 - Recreation Room



Dimensions: 32'9" x 12'10"
Area: 420 sq. ft
Counted as living area: Yes

Heated: Yes
Finished: Yes
Enclosed: Yes
Contiguous: Yes
Permitted: Yes
Wet space: No
Addition: No
Conversion: No

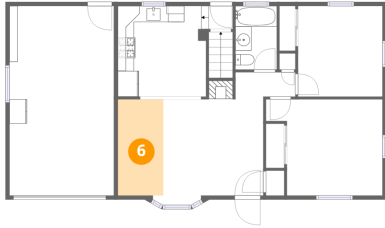
5 Floor 1 - Hall



Dimensions: 5'7" x 3'8"
Area: 20 sq. ft
Counted as living area: Yes

Heated: Yes
Finished: Yes
Enclosed: Yes
Contiguous: Yes
Permitted: Yes
Wet space: No
Addition: No
Conversion: No

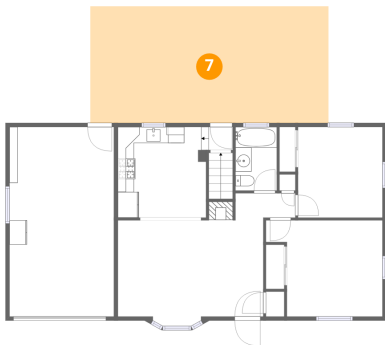
6 Floor 2 - Dining Area



Dimensions: 5'7" x 11'11"
Area: 67 sq. ft
Counted as living area: Yes

Heated: Yes
Finished: Yes
Enclosed: Yes
Contiguous: Yes
Permitted: Yes
Wet space: No
Addition: No
Conversion: No

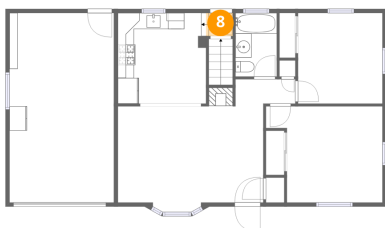
7 Floor 2 - Patio



Dimensions: 29'6" x 14'5"
Area: 424 sq. ft
Counted as living area: No

Heated: No
Finished: No
Enclosed: No
Contiguous: Yes
Permitted: Yes
Wet space: No
Addition: No
Conversion: No

8 Floor 2 - Entry



Dimensions: 3'0" x 2'10"
Area: 8 sq. ft
Counted as living area: Yes

Heated: Yes
Finished: Yes
Enclosed: Yes
Contiguous: Yes
Permitted: Yes
Wet space: No
Addition: No
Conversion: No

9 Floor 2 - Bath



Dimensions: 5'1" x 7'10"
Area: 40 sq. ft
Counted as living area: Yes

Heated: Yes
Finished: Yes
Enclosed: Yes
Contiguous: Yes
Permitted: Yes
Wet space: Yes
Addition: No
Conversion: No

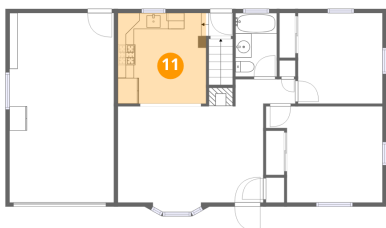
10 Floor 2 - Living Room



Dimensions: 12'5" x 11'11"
Area: 147 sq. ft
Counted as living area: Yes

Heated: Yes
Finished: Yes
Enclosed: Yes
Contiguous: Yes
Permitted: Yes
Wet space: No
Addition: No
Conversion: No

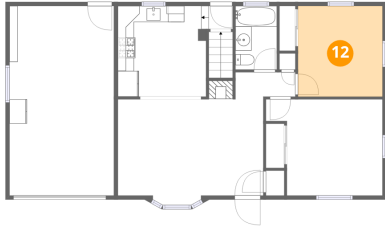
11 Floor 2 - Kitchen



Dimensions: 10'11" x 11'3"
Area: 122 sq. ft
Counted as living area: Yes

Heated: Yes
Finished: Yes
Enclosed: Yes
Contiguous: Yes
Permitted: Yes
Wet space: No
Addition: No
Conversion: No

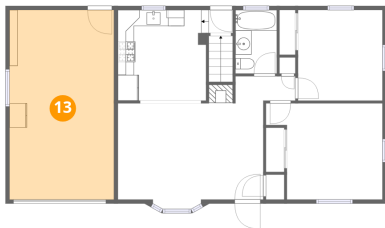
12 Floor 2 - Bedroom



Dimensions: 10'5" x 11'2"
Area: 117 sq. ft
Counted as living area: Yes

Heated: Yes
Finished: Yes
Enclosed: Yes
Contiguous: Yes
Permitted: Yes
Wet space: No
Addition: No
Conversion: No

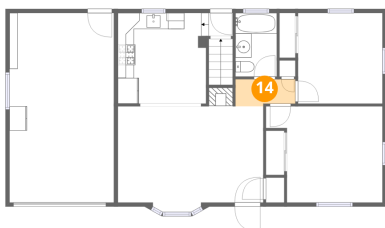
13 Floor 2 - Garage



Dimensions: 12'11" x 23'5"
Area: 303 sq. ft
Counted as living area: No

Heated: No
Finished: No
Enclosed: Yes
Contiguous: Yes
Permitted: Yes
Wet space: No
Addition: No
Conversion: No

14 Floor 2 - Hall



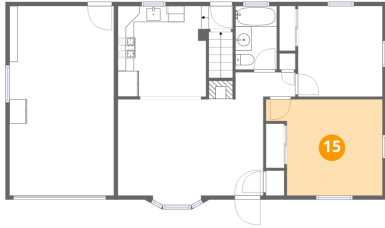
Dimensions: 7'5" x 3'4"
Area: 25 sq. ft
Counted as living area: Yes

Heated: Yes
Finished: Yes
Enclosed: Yes
Contiguous: Yes
Permitted: Yes
Wet space: No
Addition: No
Conversion: No

Home data report

2614 21st Avenue Court, Greeley, Weld County, Colorado, United States, 80631

15 Floor 2 - Primary Bedroom



Dimensions: 14'5" x 11'11"
Area: 172 sq. ft
Counted as living area: Yes

Heated: Yes
Finished: Yes
Enclosed: Yes
Contiguous: Yes
Permitted: Yes
Wet space: No
Addition: No
Conversion: No